

DM74ALS640A Inverting Octal Bus Transceiver

General Description

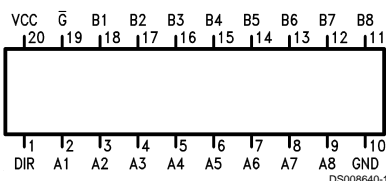
This inverting octal bus transceiver is designed for asynchronous two-way communication between data busses. This device transmits data from the A bus to the B bus or from the B bus to the A bus depending upon the level at the direction control (DIR) input. The enable input (G) can be used to disable the device so the busses are effectively isolated.

- Switching performance is guaranteed over full temperature and V_{CC} supply range
- Switching performance specified at 50 pF
- PNP input design reduces input loading

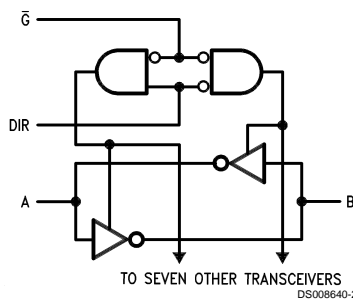
Features

- Advanced Oxide-isolated Ion-implanted Schottky TTL process

Connection and Logic Diagrams



Order Number DM74ALS640AWM or DM74ALS640AN
See Package Number M20B or N20A



Function Table

Control Inputs		Operation
\bar{G}	DIR	
L	L	\bar{B} Data to A Bus
L	H	\bar{A} Data to B Bus
H	X	Isolation

L = Low Logic Level
H = High Logic Level
X = Either Low or High Logic Level

Absolute Maximum Ratings (Note 1)

Supply Voltage	7V	DM74ALS	0°C to +70°C
Input Voltage; Control Inputs	7V	Storage Temperature Range	-65°C to +150°C
I/O ports	5.5V	Typical θ_{JA}	
Operating Free Air Temperature Range		N Package	53.0°C/W
		M Package	72.0°C/W

Recommended Operating Conditions

Symbol	Parameter	DM74ALS640A			Units
		Min	Typ	Max	
V_{CC}	Supply Voltage	4.5	5	5.5	V
V_{IH}	High Level Input Voltage	2			V
V_{IL}	Low Level Input Voltage			0.8	V
I_{OH}	High Level Output Current			-15	mA
I_{OL}	Low Level Output Current			24	mA
T_A	Operating Free Air Temperature Range	0		70	°C

Note 1: The "Absolute Maximum Ratings" are those values beyond which the safety of the device cannot be guaranteed. The device should not be operated at these limits. The parametric values defined in the "Electrical Characteristics" table are not guaranteed at the absolute maximum ratings. The "Recommended Operating Conditions" table will define the conditions for actual device operation.

Electrical Characteristics

Over Recommended Free Air Temperature Range

Symbol	Parameter	Test Conditions	DM74ALS640A			Units	
			Min	Typ	Max		
V_{IC}	Input Clamp Voltage	$V_{CC} = \text{Min}, I_I = -18 \text{ mA}$			-1.5	V	
V_{OH}	High Level Output Voltage	$V_{CC} = 4.5 \text{ to } 5.5\text{V}$	$I_{OH} = -0.4 \text{ mA}$	$V_{CC} - 2$		V	
		$V_{CC} = \text{Min}$	$I_{OH} = -3 \text{ mA}$	2.4	2.9		
			$I_{OH} = \text{Max}$	2			
V_{OL}	Low Level Output Voltage	$V_{CC} = \text{Min}$	$I_{OL} = 12 \text{ mA}$		0.25	0.4	V
			$I_{OL} = 24 \text{ mA}$		0.35	0.5	
I_I	Input Current at Maximum Input Voltage	$V_{CC} = \text{Max.}$	I/O Ports, $V_I = 5.5\text{V}$			100	μA
			Control Inputs, $V_I = 7\text{V}$			100	
I_{IH}	High Level Input Current	$V_{CC} = \text{Max}, V_I = 2.7\text{V}$ (Note 2)				20	μA
I_{IL}	Low Level Input Current	$V_{CC} = \text{Max}, V_I = 0.4\text{V}$ (Note 2)				-100	μA
I_O	Output Drive Current	$V_{CC} = \text{Max}, V_O = 2.25\text{V}$		-30		-112	mA
I_{CC}	Supply Current	$V_{CC} = \text{Max}$	Outputs High		19	45	mA
			Outputs Low		23	55	
			Outputs Disabled		17	50	

Note 2: For I/O ports, I_{IH} and I_{IL} parameters include the 3-STATE output current (I_{OZL} and I_{OZH}).

Switching Characteristics

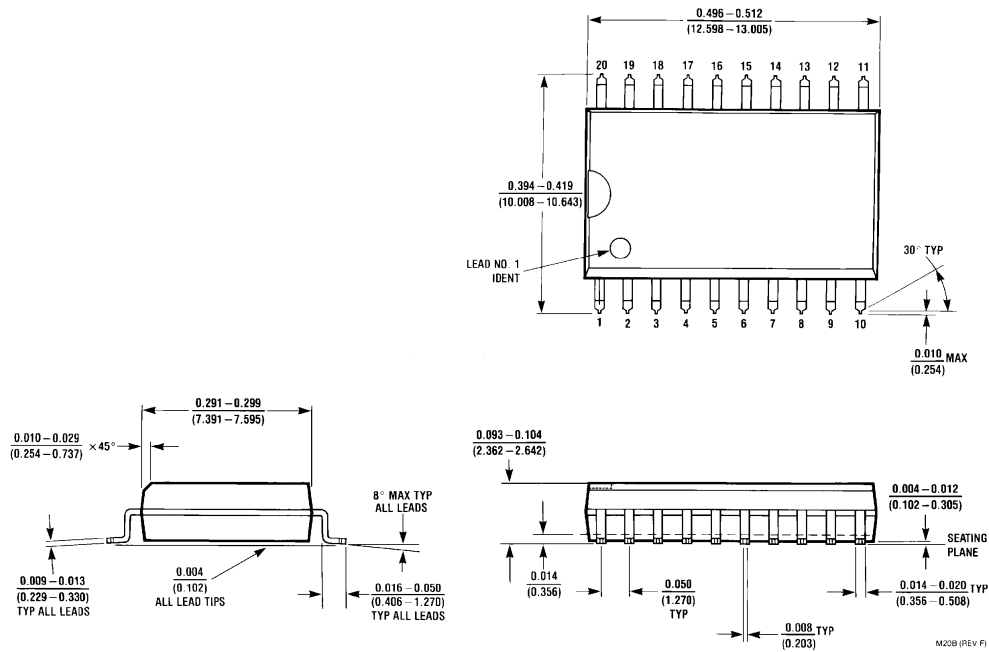
Over Recommended Operating Free Air Temperature Range (Note 3)

Symbol	Parameter	From (Input)	To (Output)	Conditions	Min	Max	Units
t_{PLH}	Propagation Delay Time Low to High Level Output	A or B	B or A	$V_{CC} = 4.5$ to $5.5V$, $C_L = 50$ pF, $R1 = R2 = 500\Omega$	1	11	ns
t_{PHL}	Propagation Delay Time High to Low Level Output	A or B	B or A		1	10	ns
t_{PZH}	Output Enable Time to High Level Output	\overline{G}	A or B		4	21	ns
t_{PZL}	Output Enable Time to Low Level Output	\overline{G}	A or B		5	24	ns
t_{PHZ}	Output Disable Time from High Level Output	\overline{G}	A or B		1	10	ns
t_{PLZ}	Output Disable Time from Low Level Output	\overline{G}	A or B		3	15	ns

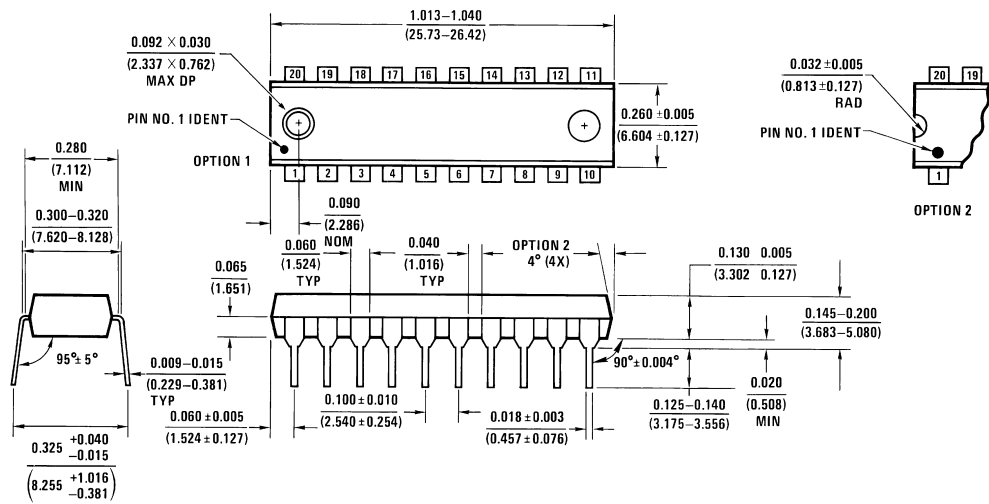
Note 3: See Section 5 for test waveforms and output load.



Physical Dimensions inches (millimeters) unless otherwise noted



SO Package (M)
Order Number DM74ALS640AWM
Package Number M20B



Molded Dual-In-Line Package (N)
Order Number DM74ALS640AN
Package Number N20A

LIFE SUPPORT POLICY

FAIRCHILD'S PRODUCTS ARE NOT AUTHORIZED FOR USE AS CRITICAL COMPONENTS IN LIFE SUPPORT DEVICES OR SYSTEMS WITHOUT THE EXPRESS WRITTEN APPROVAL OF THE PRESIDENT OF FAIRCHILD SEMICONDUCTOR CORPORATION. As used herein:

1. Life support devices or systems are devices or systems which, (a) are intended for surgical implant into the body, or (b) support or sustain life, and (c) whose failure to perform when properly used in accordance with instructions for use provided in the labeling, can be reasonably expected to result in a significant injury to the user.
2. A critical component in any component of a life support device or system whose failure to perform can be reasonably expected to cause the failure of the life support device or system, or to affect its safety or effectiveness.

Fairchild Semiconductor Corporation Americas
Customer Response Center
Tel: 1-888-522-5372

Fairchild Semiconductor Europe
Fax: +49 (0) 1 80-530 85 86
Email: europe.support@nsc.com
Deutsch Tel: +49 (0) 8 141-35-0
English Tel: +44 (0) 1 793-85-68-56
Italy Tel: +39 (0) 2 57 5631

Fairchild Semiconductor Hong Kong Ltd.
13th Floor, Straight Block,
Ocean Centre, 5 Canton Rd.
Tsimshatsui, Kowloon
Hong Kong
Tel: +852 2737-7200
Fax: +852 2314-0061

National Semiconductor Japan Ltd.
Tel: 81-3-5620-6175
Fax: 81-3-5620-6179

www.fairchildsemi.com