

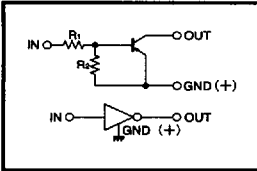
Digital transistors (built-in resistors)

DTA144WE / DTA144WUA / DTA144WKA / DTA144WSA

●Features

- 1) Built-in bias resistors enable the configuration of an inverter circuit without connecting external input resistors.
- 2) The bias resistors consist of thin-film resistors with complete isolation to allow positive biasing of the input, and parasitic effects are almost completely eliminated.
- 3) Only the on/off conditions need to be set for operation, making device design easy.
- 4) Higher mounting densities can be achieved.

●Circuit schematic



●Electrical characteristics (Ta=25°C)

Parameter	Symbol	Min.	Typ.	Max.	Unit	Conditions
Input voltage	$V_{(on)}$	—	—	-0.8	—	$V_{CC} = -5V, I_o = -100 \mu A$
	$V_{(en)}$	-4	—	—	V	$V_o = -0.3V, I_o = -2mA$
Output voltage	$V_{(out)}$	—	-0.1	-0.3	V	$I_o = -10mA, I_i = -0.5mA$
Input current	I_i	—	—	-0.16	mA	$V_i = -5V$
Output current	$I_{(out)}$	—	—	-0.5	μA	$V_{CC} = -50V, V_i = 0V$
DC current gain	G_i	56	—	—	—	$I_o = -5mA, V_o = -5V$
Input resistance	R_i	32.9	47	61.1	k Ω	—
Resistance ratio	R_2/R_1	0.37	0.47	0.57	—	—
Transition frequency	f_t	—	250	—	MHz	$V_{CE} = -10V, I_e = 5mA, f = 100MHz$ *

* Transition frequency of mounted transistor.

(94S-579-144W)

●Absolute maximum ratings (Ta=25°C)

Parameter	Symbol	Limits	Unit
Supply voltage	V_{CC}	-50	V
Input voltage	V_i	-40	V
		10	
Output current	I_o	-30	mA
	I_{CMax}	-100	
Power dissipation	Pd	150	mW
		200	
		300	
Junction temperature	T_j	150	$^{\circ}C$
Storage temperature	T_{stg}	-55~150	$^{\circ}C$

●Package, marking, and packaging specifications

Type	DTA144WE	DTA144WUA	DTA144WKA	DTA144WSA
Package	EMT3	UMT3	SMT3	SPT
Marking	76	76	76	—
Code	TL	T106	T146	TP
Basic ordering unit (pieces)	3000	3000	3000	5000

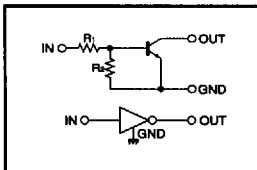
Digital transistors (built-in resistors)

DTC144WE / DTC144WUA / DTC144WKA / DTC144WSA

●Features

- 1) Built-in bias resistors enable the configuration of an inverter circuit without connecting external input resistors.
- 2) The bias resistors consist of thin-film resistors with complete isolation to allow negative biasing of the input, and parasitic effects are almost completely eliminated.
- 3) Only the on/off conditions need to be set for operation, making device design easy.
- 4) Higher mounting densities can be achieved.

●Circuit schematic



●Electrical characteristics (Ta=25°C)

Parameter	Symbol	Min.	Typ.	Max.	Unit	Conditions
Input voltage	$V_{(on)}$	—	—	0.8	—	$V_{CC} = 5V, I_o = 100 \mu A$
	$V_{(en)}$	4	—	—	V	$V_o = 0.3V, I_o = 2mA$
Output voltage	$V_{(out)}$	—	0.1	0.3	V	$I_o = 10mA, I_i = 0.5mA$
Input current	I_i	—	—	0.16	mA	$V_i = 5V$
Output current	$I_{(out)}$	—	—	0.5	μA	$V_{CC} = 50V, V_i = 0V$
DC current gain	G_i	56	—	—	—	$I_o = 5mA, V_o = 5V$
Input resistance	R_i	32.9	47	61.1	k Ω	—
Resistance ratio	R_2/R_1	0.37	0.47	0.57	—	—
Transition frequency	f_t	—	250	—	MHz	$V_{CE} = 10V, I_e = -5mA, f = 100MHz$ *

* Transition frequency of mounted transistor.

●Absolute maximum ratings (Ta=25°C)

Parameter	Symbol	Limits	Unit
Supply voltage	V_{CC}	50	V
Input voltage	V_i	40	V
		-10	
Output current	I_o	30	mA
	I_{CMax}	100	
Power dissipation	Pd	150	mW
		200	
		300	
Junction temperature	T_j	150	$^{\circ}C$
Storage temperature	T_{stg}	-55~150	$^{\circ}C$

●Package, marking, and packaging specifications

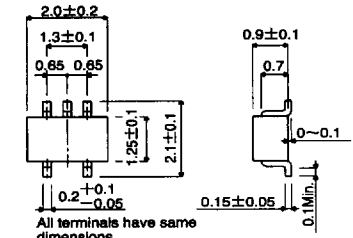
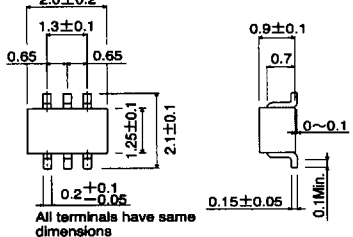
Type	DTC144WE	DTC144WUA	DTC144WKA	DTC144WSA
Package	EMT3	UMT3	SMT3	SPT
Marking	86	86	86	—
Code	TL	T106	T146	TP
Basic ordering unit (pieces)	3000	3000	3000	5000

7828999 0017131 114

(94S-701-C144W)

Type	External dimensions (Units : mm)	Features
<p>CPT 3 SC-63 type</p>	<p>Technical drawing of CPT 3 SC-63 type transistor. Top view dimensions: 6.5±0.2, 5.1±0.2, 0.9, 0.65±0.1, 2.3±0.2, 2.3±0.2. Side view dimensions: 2.3±0.2, 0.5±0.1, 1.5, 2.5, 9.5±0.5, 0.55±0.1, 1.0±0.2. Lead diameter: C0.5. Lead length: 5.5+0.3/-0.1, 1.5±0.3, 0.75, 0.9.</p>	<p>By itself the CPT3 has a P_c of 1 W ($T_a = 25^\circ\text{C}$), but a large P_c of several watts can be obtained with an appropriate mounting surface. At the same time the CPT3 is compact, making it suitable for high density mounting and hybrid ICs. Available on tape for automatic mounting. For vertical high density mounting, the leaded CPT (SC-64) type with the same mold size is also available.</p>
<p>PSD3</p>	<p>Technical drawing of PSD3 transistor. Top view dimensions: 10.1±0.3, 13.1±0.5, 3.2, 2.54, 5.08, 0.78, 1.24, 8.6±0.2. Side view dimensions: 4.5±0.2, 1.3, 0~0.3, 0.4, 1.3, 0.5Min.</p>	<p>The PSD3 is a TO-220 class surface-mount package. A high P_c can be obtained with an appropriate mounting surface. Surface mounting allows a high vertical density, enabling the design of slim and compact devices. The PSD3 is available on tape for automatic mounting, and it helps improve mounting efficiency and reduce mounting cost.</p>
<p>SMT5 SC-74A type</p>	<p>Technical drawing of SMT5 SC-74A type transistor. Top view dimensions: 2.9±0.2, 1.9±0.2, 0.95, 0.95, 1.6+0.2/-0.1, 2.8±0.2, 0.3+0.1/-0.05. Side view dimensions: 1.1+0.2/-0.1, 0.8±0.1, 0~0.1, 0.15+0.1/-0.06, 0.3~0.6.</p> <p>All terminals have same dimensions</p>	<p>The SMT5 consists of two connected transistors or digital transistors in an SMT3 (SC-59) package. The mounting area can be reduced by 50% compared to the SMT3 and the internal circuitry is complete, making this package ideal for high density mounting at half the assembly cost.</p>
<p>SMT6 SC-74 type</p>	<p>Technical drawing of SMT6 SC-74 type transistor. Top view dimensions: 2.9±0.2, 1.9±0.2, 0.95, 0.95, 1.6+0.2/-0.1, 2.8±0.2, 0.3+0.1/-0.05. Side view dimensions: 1.1+0.2/-0.1, 0.8±0.1, 0~0.1, 0.15+0.1/-0.06, 0.3~0.6.</p>	<p>The SMT6 consists of two independent transistors or two independent digital transistors in an SMT3 (SC-59) package. The mounting area and mounting cost can be reduced by 50% compared to the SMT3, and the two transistors are independent to allow free configuration of a high density circuit.</p>

EXPLANATION

Type	External dimensions (Units : mm)	Features
<p>UMT5 SC-88A type</p>	 <p>All terminals have same dimensions</p>	<p>The UMT5 consists of two connected transistors or digital transistors in a UMT3 (SC-70) package. The mounting area can be reduced by 50% compared to the UMT3 and the internal circuitry is completed, making this package ideal for high density mounting at half the assembly cost.</p>
<p>UMT6 SC-88 type</p>	 <p>All terminals have same dimensions</p>	<p>The UMT6 consists of two independent transistors or two independent digital transistors in a UMT (SC-70) package. The mounting area and mounting cost can be reduced by 50% compared to the UMT3, and the two transistors are independent to allow free configuration of a high density circuit.</p>

●Types and features of leaded packages

Type	External dimensions (Units : mm)	Features
<p>SPT (SC-72 type)</p>		<p>The SPT is a smaller version of the conventional TO-92 type. The body size (3×4×2 mm³) has been reduced to 1/4 that of the TO-92 (5×5×4 mm³). The SPT is available on tape for automatic insertion, and less space is occupied on the printed circuit board than the TO-92. Reliability is the same as the TO-92.</p>
<p>FTR</p>		<p>SIL type with a height of 3.4 mm and a lead pitch of 2.54 mm.</p>
<p>FTL</p>		<p>The FTL is a radial taping version of the highly popular FTR. This enables automatic high-density mounting with a radial insertion machine.</p>
<p>ATR (SC-71 type)</p>		<p>SC-71 type with a height of 4.4 mm and a P_c=1W type.</p>

EXPLANATION

Type	External dimensions (Units : mm)	Features
<p>ATV</p>		<p>The ATV is a radial tapping version of the highly popular ATR. This enables automatic high-density mounting with a radial insertion machine.</p>
<p>TO-92 (SC-43 type)</p>		<p>The SC-43 is for general purpose small signals.</p>
<p>TO-126FP</p>		<p>The TO-126FP is an isolation type package based on a TO-126 full mold. In addition to the features of the TO-126, molded heat sink fins allow easy isolation of the heat sink.</p>
<p>TO-220FP (SC-67 type)</p>		<p>The TO-220FP is an isolation type package based on a TO-220 full mold. In addition to the features of the TO-126 and TO-220, molded heat sink fins allow easy isolation of the heat sink.</p>

7828999 0016713 7T7

Type	External dimensions (Units : mm)	Features
TO-220FN		<p>The TO-220FN features the same performance as the TO-220FP with approximately 2 mm less height, allowing the design of slimmer devices. Furthermore, the elimination of support pins in the fin (collector electrode) solves short-circuiting problems with neighboring components and the chassis.</p> <p>To make the height to the installation hole the same as the TO-220FP, it can be replaced as is from the TO-220FP.</p>

EXPLANATION

7828999 0016714 633