

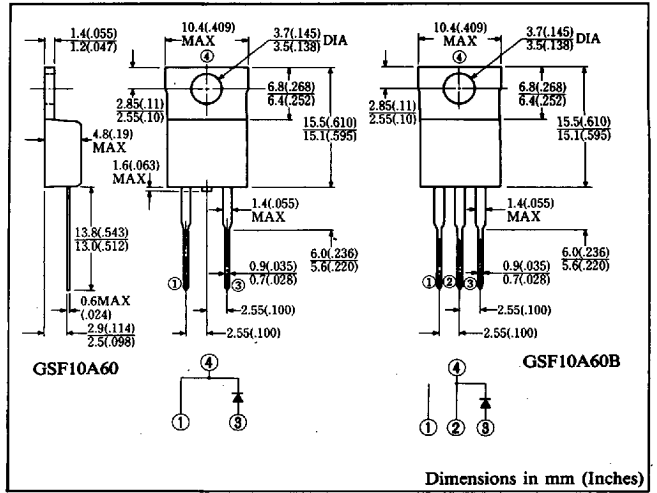
# FAST RECOVERY DIODE

11A/600V/trr: 50nsec

GSF10A60 FSF10A60  
GSF10A60B FSF10A60B

## FEATURES

- Similar to TO-220AC and TO-220AB Case
- Fully Molded Isolation Case (F-Type)
- Ultra-Fast Recovery
- Low Forward Voltage Drop
- Low Power Loss, High Efficiency
- High Surge Capability
- 100 Volts through 600 Volts Types Available



Approx. Net Weight: 1.85 Grams

1.9 Grams

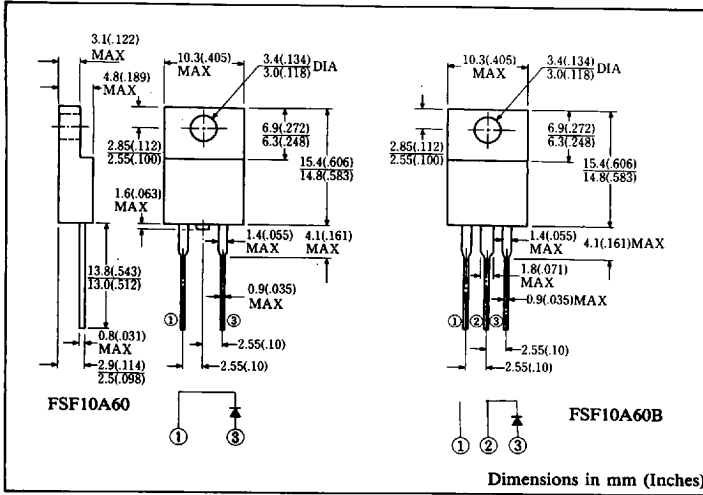
## MAXIMUM RATINGS

Voltage Rating	Type	GSF10A60 FSF10A60B		Unit
	Symbol	Condition		
Repetitive Peak Reverse Voltage	$V_{RRM}$	600		V
Electrical Rating	Symbol	Condition		Rating
Average Rectified Output Current	$I_o$	180° rectangular wave conduction $T_c = 59^\circ C$		11
		180° sinusoidal wave conduction $T_c = 74^\circ C$		10
RMS Forward Current	$I_{F(RMS)}$			15.7
Peak One-cycle Forward Surge Current	$I_{FSM}$	50Hz half sine wave 1 cycle, non-repetitive		120
Operating Junction Temperature Range	$T_{jw}$			-40 to 150
Storage Temperature Range	$T_{stg}$			-40 to 150
Mounting Torque	$F_{tor}$	Recommended torque		0.5 (5.1) N·M (kgf·cm)

## ELECTRICAL & THERMAL CHARACTERISTICS

Characteristics	Symbol	Test Condition	Max.	Unit
Peak Forward Voltage	$V_{FM}$	$I_{FM} = 10A$ $T_j = 25^\circ C$	1.8	V
Peak Reverse Current	$I_{RM}$	$V_{RM} = V_{RRM}$ $T_j = 25^\circ C$	30	$\mu A$
Reverse Recovery Time	$t_{rr}$	$I_{FM} = 10A$ $-di/dt = 50A/\mu s$ $T_j = 25^\circ C$	50	ns
Thermal Resistance	$R_{th(j-c)}$	Junction to Case	6	$^\circ C/W$
	$R_{th(c-f)}$	Case to Fin (FSF-Type)	1.5	

6615123 0002195 373



1.7 Grams

1.75 Grams

Dimensions in mm (Inches)

FIG.1-FORWARD CURRENT VS. VOLTAGE

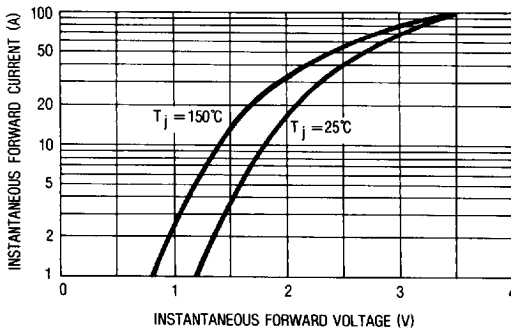


FIG.2-AVERAGE FORWARD POWER DISSIPATION

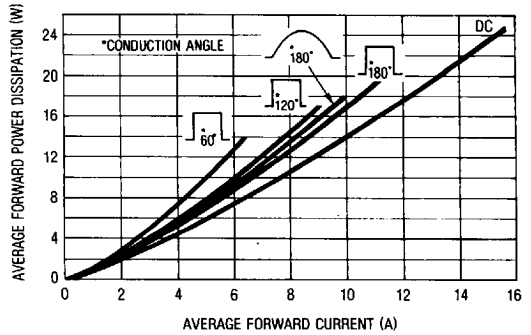


FIG.3-AVERAGE FORWARD CURRENT VS. CASE TEMPERATURE

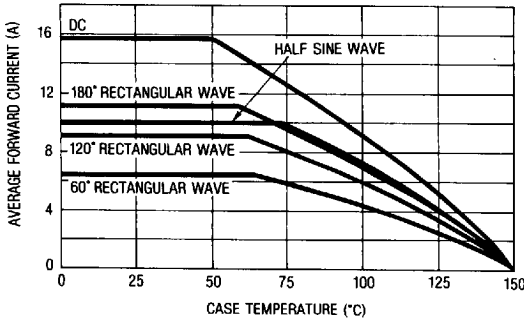
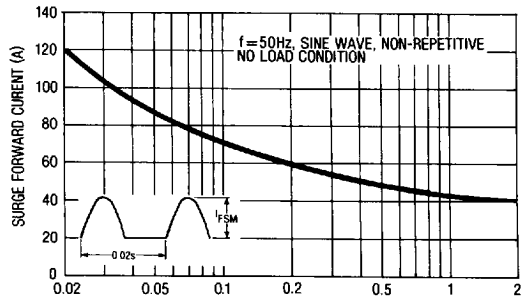


FIG.4-SURGE CURRENT RATINGS



6615123 0002196 20T