

### Switchmode Power Rectifiers

... Designed for use in switching power supplies, inverters and as free wheeling diodes. These state-of-the-art devices have the following features:

- \* High Surge Capacity
- \* Low Power Loss, High efficiency
- \* Glass Passivated chip junctions
- \* 150 °C Operating Junction Temperature
- \* Low Stored Charge Majority Carrier Conduction
- \* Low Forward Voltage , High Current Capability
- \* High-Switching Speed 100 Nanosecond Recovery Time
- \* Plastic Material used Carries Underwriters Laboratory Flammability Classification 94V-O

**HIGH EFFICIENCY  
RECTIFIERS**

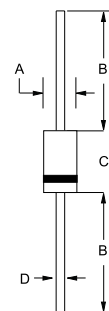
**1.0 AMPERES  
600 -- 1000 VOLTS**



**DO-41**

### MAXIMUM RATINGS

Characteristic	Symbol	HER106	HER107	HER108	Unit
Peak Repetitive Reverse Voltage Working Peak Reverse Voltage DC Blocking Voltage	$V_{RRM}$ $V_{RWM}$ $V_R$	600	800	1000	V
RMS Reverse Voltage	$V_{R(RMS)}$	420	560	700	V
Average Rectifier Forward Current	$I_o$	1.0			A
Non-Repetitive Peak Surge Current ( Surge applied at rate load conditions halfwave, single phase, 60Hz )	$I_{FSM}$	30			A
Operating and Storage Junction Temperature Range	$T_J, T_{stg}$	- 65 to + 150			°C



DIM	MILLIMETERS	
	MIN	MAX
A	2.00	2.70
B	25.40	---
C	4.10	5.20
D	0.70	0.90

### ELECTRICAL CHARACTERISTICS

Characteristic	Symbol	HER106	HER107	HER108	Unit
Maximum Instantaneous Forward Voltage ( $I_F=1.0$ Amp, $T_C = 25$ °C)	$V_F$	1.50		1.75	V
Maximum Instantaneous Reverse Current ( Rated DC Voltage, $T_C = 25$ °C) ( Rated DC Voltage, $T_C = 125$ °C)	$I_R$	5.0 50			uA
Reverse Recovery Time ( $I_F = 0.5$ A, $I_R = 1.0$ , $I_{rr} = 0.25$ A )	$T_{rr}$	100			ns
Typical Junction Capacitance ( Reverse Voltage of 4 volts & f=1 MHz)	$C_p$	15	10		pF

CASE---  
Transfer molded  
plastic

POLARITY---  
Cathode indicated  
polarity band

# HER106 Thru HER108

FIG-1 TYPICAL FORWARD CHARACTERISTICS

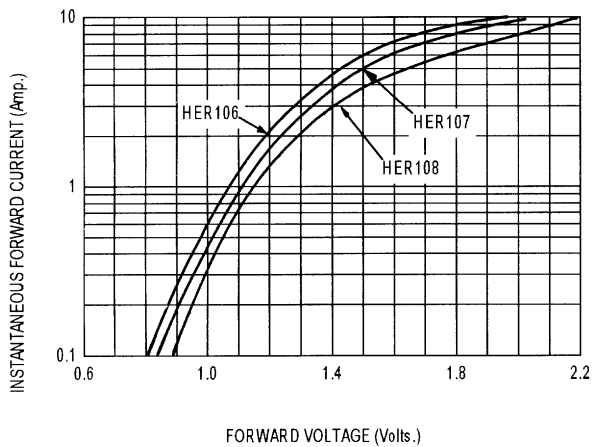


FIG-3 FORWARD CURRENT DERATING CURVE

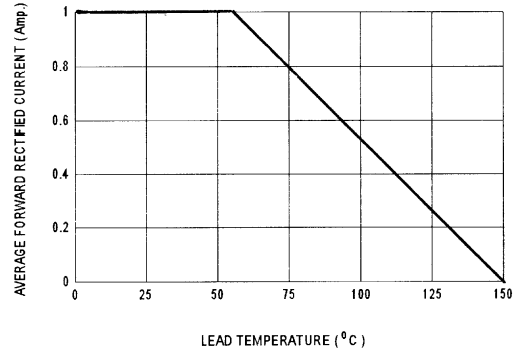


FIG-4 TYPICAL JUNCTION CAPACITANCE

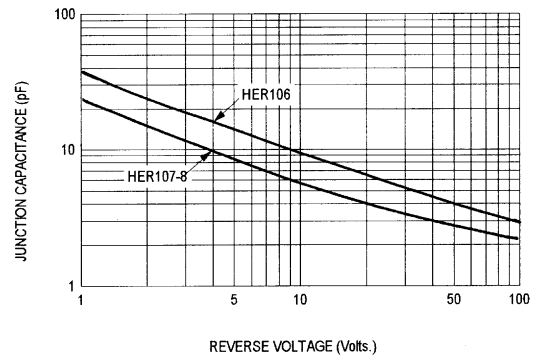


FIG-2 TYPICAL REVERSE CHARACTERISTICS

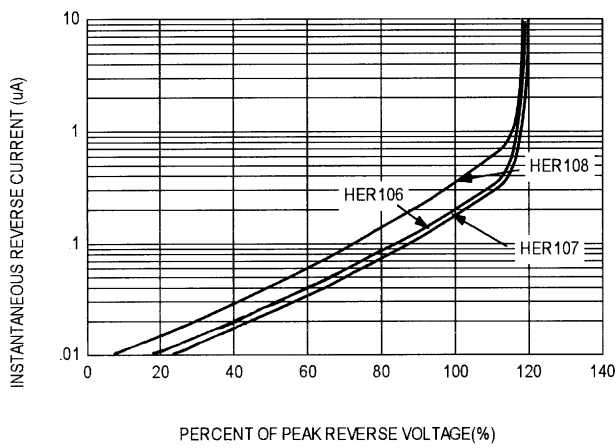
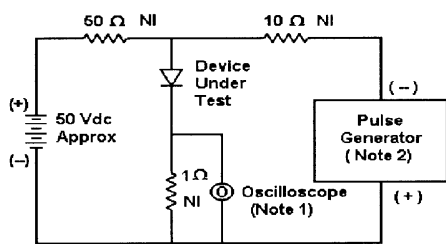
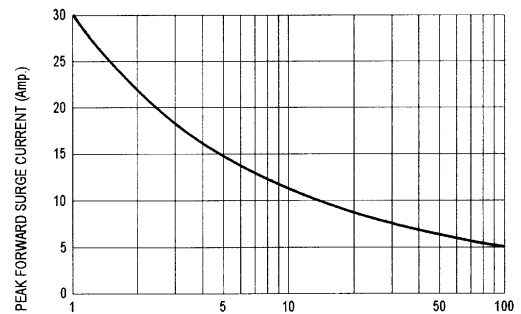
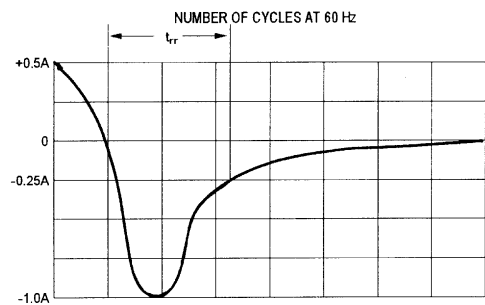


FIG-5 PEAK FORWARD SURGE CURRENT



- Notes:  
 1. Rise Time = 7 ns max. Input Impedance = 1 M Ω, 22 pF  
 2. Rise Time = 10 ns max. Input Impedance = 50 Ω



Set time base for 20/50 ns/div

Fig-6 Reverse Recovery Time Characteristic and Test Circuit Diagram

Copyright © Each Manufacturing Company.

All Datasheets cannot be modified without permission.

This datasheet has been download from :

[www.AllDataSheet.com](http://www.AllDataSheet.com)

100% Free DataSheet Search Site.

Free Download.

No Register.

Fast Search System.

[www.AllDataSheet.com](http://www.AllDataSheet.com)