

# FAN8725 (KA3025)

## Spindle and 5-CH Driver

### Features

#### Common

- Built-in thermal shutdown circuit (TSD)
- Built-in power save circuit
- 3 Independent voltage source
- Corresponds to 3.3V or 5V DSP

#### Spindle

- Built-in hall bias
- Built-in FG signal output circuit
- Built-in rotational direction detecting circuit
- Built-in protection circuit for reverse rotation
- Built-in short brake circuit

#### BTL (5-channel)

- Built-in 5-CH balanced transformerless (BTL) driver
- Built-in Level shift circuit
- Independent voltage sources
  - VM2 = CH1,CH2 / VM3 = CH3, CH4 ,CH5

### Typical Applications

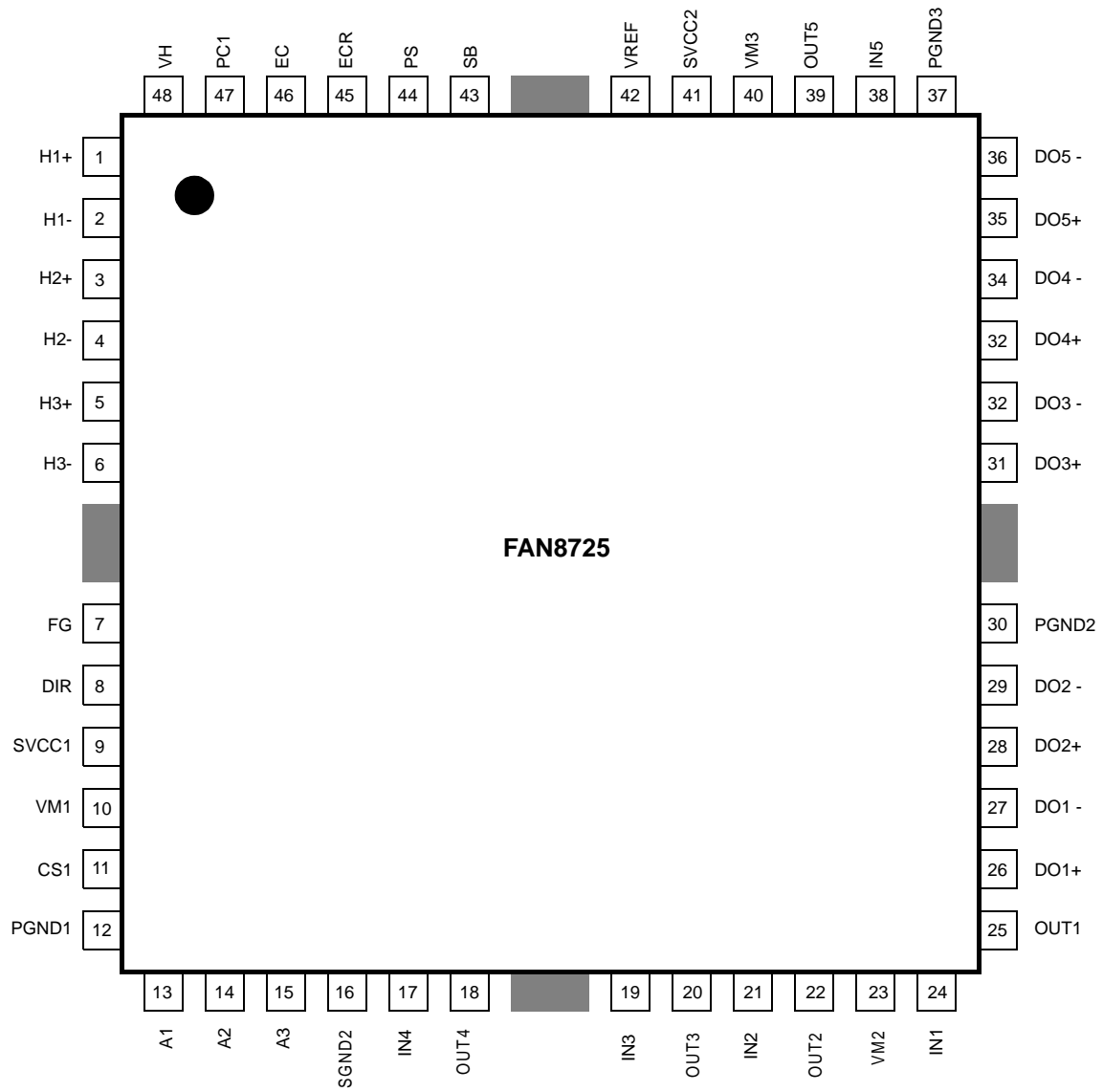
- Compact disc ROM
- Digital video disc ROM
- Compact disc recorderable
- Digital video disc player
- Compact disc player

### Description

The FAN8725 is a monolithic IC suitable for a 3-phase BLDC spindle motor driver and 5-ch motor drivers which drives the focus actuator, tracking actuator, loading motor, stepping motor driver of the CD-media systems.



## Pin Assignments



CD-MEDIA ONE CHIP IC

## Pin Definitions

Pin Number	Pin Name	I/O	Pin Function Description
1	H1-	I	Hall 1(-) input
2	H1+	I	Hall 1(+) input
3	H2+	I	Hall 2(-) input
4	H2-	I	Hall 2(+) input
5	H3+	I	Hall 3(-) input
6	H3-	I	Hall 3(+) input
7	FG	O	Frequency Generator output
8	DIR	O	Rotation direction output
9	SVCC1	-	Spindle Signal supply voltage
10	VM1	-	Spindle power supply
11	CS1	I	Spindle current sense
12	PGND1	-	Spindle power ground
13	A1	O	3-phase output1
14	A2	O	3-phase output2
15	A3	O	3-phase output3
16	SGND2	-	CH signal ground
17	IN4	I	OP-Amp CH 4 input(-)
18	OUT4	O	OP-Amp CH 4 output
19	IN3	I	OP-Amp CH 3 input(-)
20	OUT3	O	OP-Amp CH 3 output
21	IN2	I	OP-Amp CH 2 input(-)
22	OUT2	O	OP-Amp CH 2 output
23	VM2	-	CH1/CH2 power supply
24	IN1	I	OP-Amp CH 1 input(-)
25	OUT1	O	OP-Amp CH 1 output
26	DO1+	O	Channel 1 output (+)
27	DO1 -	O	Channel 1 output (-)
28	DO2+	O	Channel 2 output (+)
29	DO2 -	O	Channel 2 output (-)
30	PGND2	-	CH1/CH2 power ground
31	DO3+	O	Channel 3 output (+)
32	DO3 -	O	Channel 3 output (-)
33	DO4+	O	Channel 4 output (+)

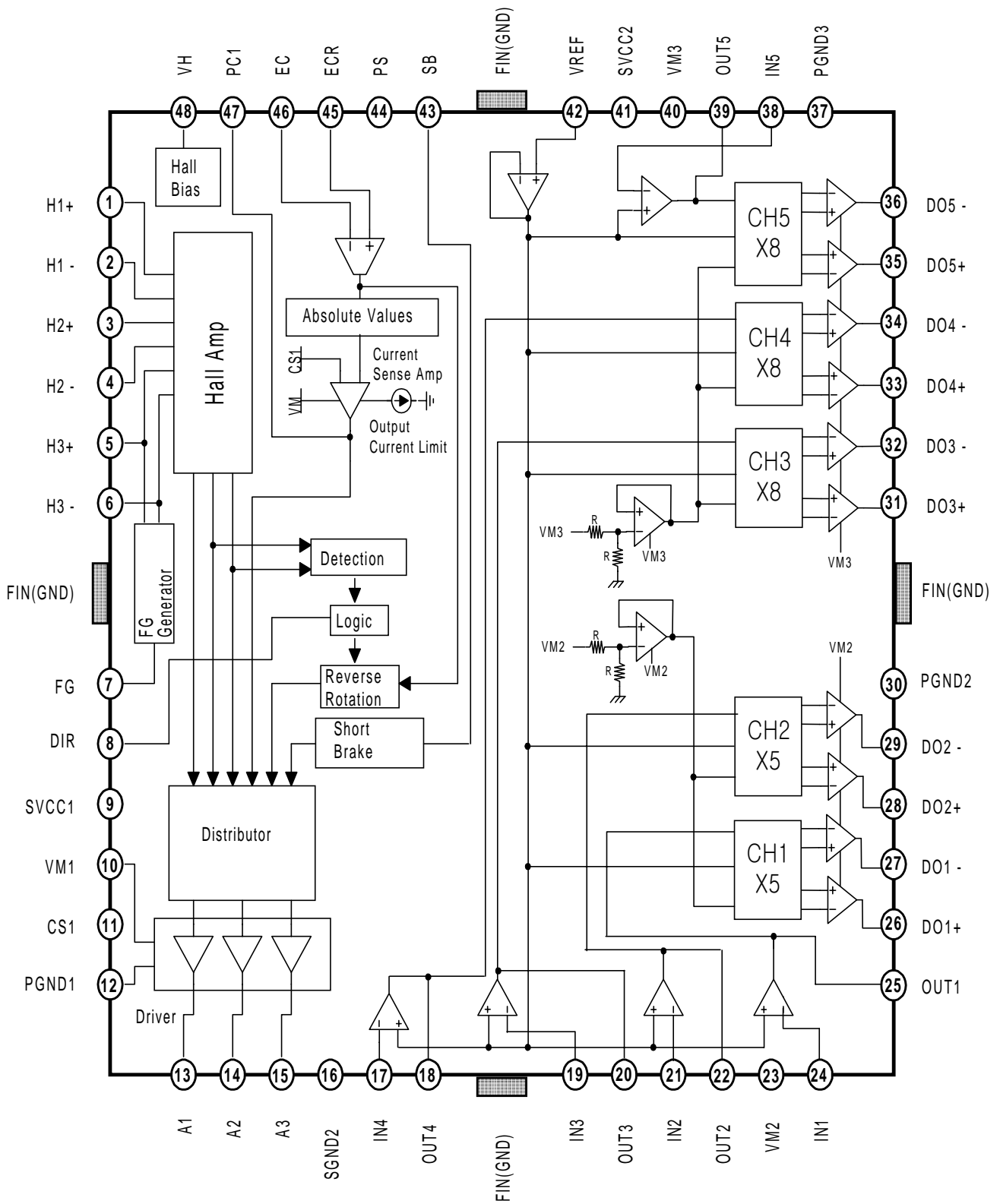
**Pin Definitions (Continued)**

Pin Number	Pin Name	I/O	Pin Function Description
34	DO4 -	O	Channel 4 output (-)
35	DO5+	O	Channel 5 output (+)
36	DO5-	O	Channel 5 output (-)
37	PGND3	-	CH3/CH4/CH5 power ground
38	IN5	I	OP-Amp CH 5 input(-)
39	OUT5	O	OP-Amp CH 5 output
40	VM3	-	CH3/CH4/CH5 power supply
41	SVCC2	-	CH Signal supply voltage
42	VREF	I	BTL reference voltage
43	SB	I	Short brake
44	PS	I	Power save
45	ECR	I	Torque control reference
46	EC	I	Torque control
47	PC1	-	Phase compensation capacitor
48	VH	I	Hall bias

**Notes:**

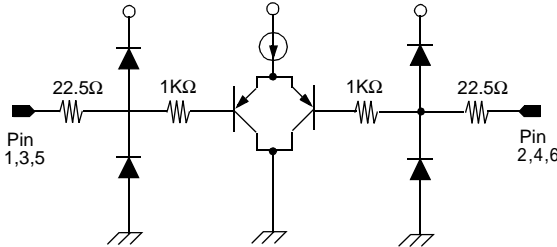
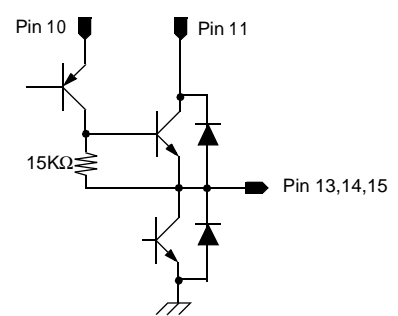
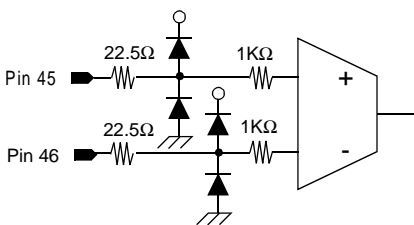
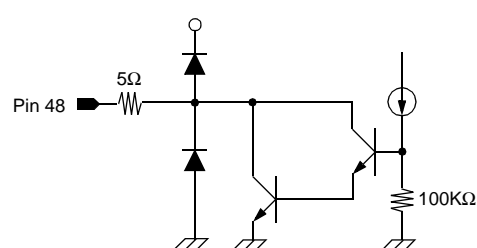
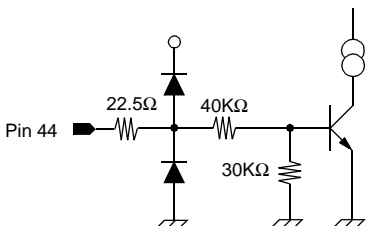
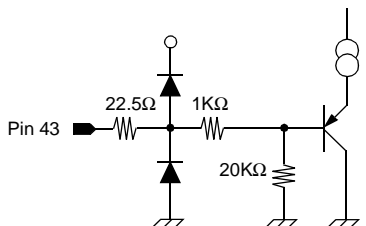
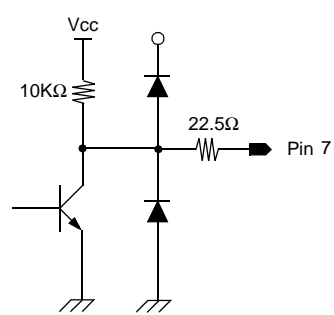
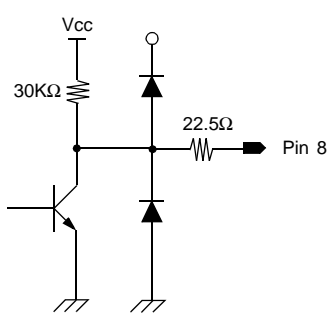
BTL drive part symbol(+,- outputs of drives) is determined according to the polarity of input pin.  
 (For example, if the voltage of pin 24 is high, the output of pin 26 is high)

# Internal Block Diagram



**CD-MEDIA ONE CHIP IC**

## Equivalent Circuits (Spindle Part)

HALL INPUT	DRIVER OUTPUT
	
TORQUE CONTROL INPUT	HALL BIAS INPUT
	
POWER SAVE INPUT	SHORT BRAKE INPUT
	
FG OUTPUT	DIR OUTPUT
	

CD-MEDIA ONE CHIP IC

### Equivalent Circuits (BTL Part)

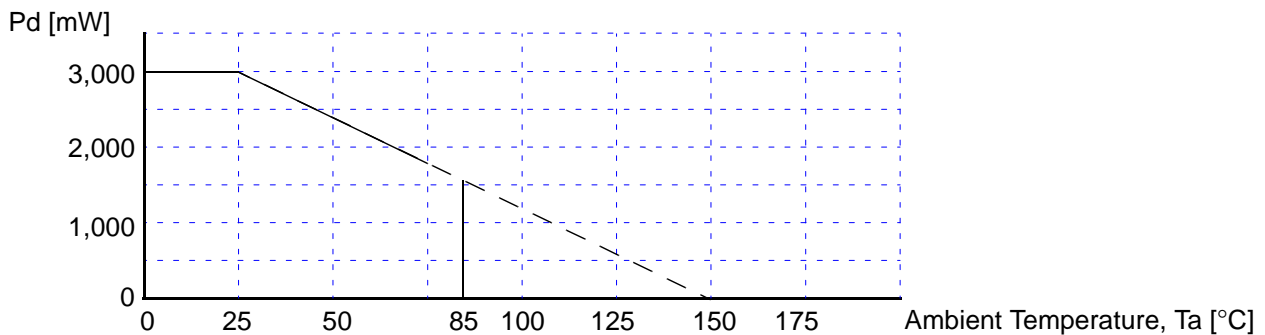
OP-AMP INPUT	OP-AMP OUTPUT
<p>Pin 24,21, 19,17,38</p>	<p>Pin 25,22,20,18,39</p>
DRIVE OUTPUT	VREF
<p>CH-O (Pin 26,28,31,33,35)</p> <p>CH-O (Pin 27,29,32,34,36)</p>	<p>Pin 42</p>

CD-MEDIA ONE CHIP IC

## Absolute Maximum Ratings (Ta = 25°C)

Parameter	Symbol	Value	Unit
Supply Voltage (Spindle Signal)	SV <sub>CC1max</sub>	7	V
Supply Voltage (BTL Signal)	SV <sub>CC2max</sub>	15	V
Supply Voltage (Spindle Motor)	V <sub>M1max</sub>	15	V
Supply Voltage (BTL CH1/2)	V <sub>M2max</sub>	15	V
Supply Voltage (BTL CH3/4/5)	V <sub>M3max</sub>	15	V
Power Dissipation	P <sub>D</sub>	@3.0	W
Operating Temperature Range	T <sub>OPR</sub>	-20 ~ +75	°C
Storage Temperature Range	T <sub>STG</sub>	-55 ~ +150	°C
Maximum Output Current (Spindle Part)	I <sub>Omaxa</sub>	1.3	A
Maximum Output Current (BTL Part)	I <sub>Omaxb</sub>	0.6	A

- @: 1. When mounted on 70mm × 70 mm × 1.6mm PCB (Phenolic resin material)  
 2. Power dissipation is reduced 24 mW/°C for using above Ta=25°C  
 3. Do not exceed P<sub>D</sub> and SOA(Safe Operating Area).



## Recommended Operating Conditions (Ta = 25°C)

Parameter	Symbol	Min.	Typ.	Max.	Unit
Operating Supply Voltage (Spindle Signal)	SV <sub>CC1</sub>	4.5	–	5.5	V
Operating Supply Voltage (BTL Signal)	SV <sub>CC2</sub>	10.8	–	13.2	V
Operating Supply Voltage (Spindle Motor)	V <sub>M1</sub>	10.8	–	13.2	V
Operating Supply Voltage (BTL CH1/2)	V <sub>M2</sub>	4.5	–	SV <sub>CC2</sub>	V
Operating Supply Voltage (BTL CH3/4/5)	V <sub>M3</sub>	4.5	–	SV <sub>CC2</sub>	V

**Electrical Characteristics (Ta = 25°C)**

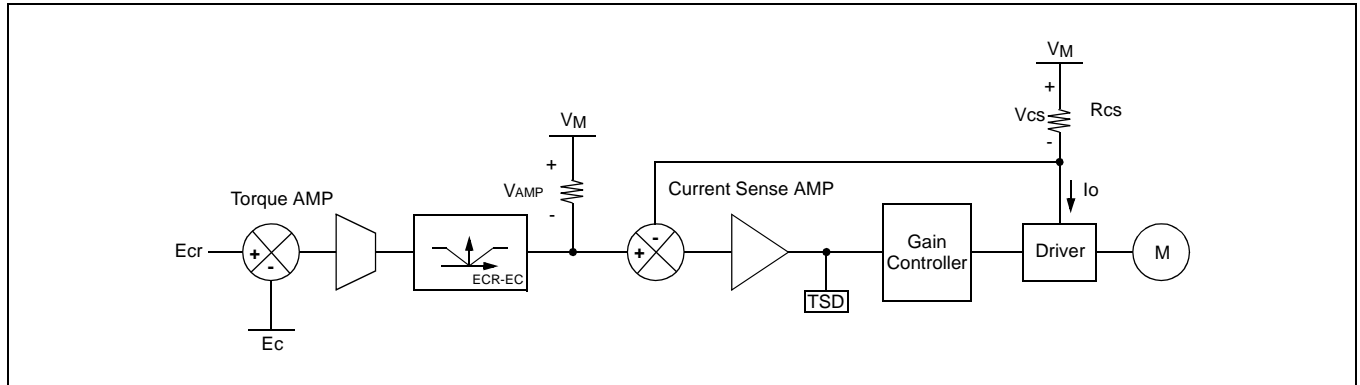
Parameter	Symbol	Condition	Min.	Typ.	Max.	Units
<b>FULL CHIP</b>						
Quiescent Circuit Current 1	I <sub>CC1</sub>	FULL CHIP (PS=0V)	–	0	0.2	mA
Quiescent Circuit Current 2	I <sub>CC2</sub>	SPINDLE (PS=5V)	–	5	10	mA
Quiescent Circuit Current 3	I <sub>CC3</sub>	BTL (PS=5V)	–	20	30	mA
<b>POWER SAVE</b>						
On Voltage Range	V <sub>PSon</sub>	L-H Circuit On	2.5	–	V <sub>CC</sub>	V
Off Voltage Range	V <sub>PSoff</sub>	H-L Circuit Off	–	–	1.0	V
<b>HALL BIAS</b>						
Hall Bias Voltage	V <sub>HB</sub>	I <sub>HB</sub> =20mA	0.4	1.0	1.8	V
<b>HALL AMP</b>						
Hall Bias Current	I <sub>HA</sub>		–	0.5	2	uA
Common Mode Input Range	V <sub>HAR</sub>		1.5	–	4.0	V
Minimum in Level	V <sub>INH</sub>		100	–	–	mVpp
H1 Hysteresis	V <sub>HYS</sub>		5	20	40	mVpp
<b>TORQUE CONTROL</b>						
Ecr In Voltage Range	E <sub>CR</sub>		0.2	–	4.0	V
Ec In Voltage Range	E <sub>C</sub>		0.2	–	4.0	V
Offset Voltage (-)	E <sub>Coff-</sub>	E <sub>C</sub> =1.9V	-80	-50	-20	mV
Offset Voltage (+)	E <sub>Coff+</sub>	E <sub>CR</sub> =1.9V	20	50	80	mV
E <sub>C</sub> In Current	E <sub>Cin</sub>	E <sub>C</sub> =1.9V	-3	-0.5	–	uA
E <sub>CR</sub> In Current	E <sub>CRin</sub>	E <sub>CR</sub> =1.9V	-3	-0.5	–	uA
In/output Gain	G <sub>EC</sub>	E <sub>CR</sub> =2.5V, R <sub>CS</sub> =0.5Ω	0.56	0.70	0.84	A / V
<b>FG</b>						
FG Output Voltage (H)	V <sub>FGH</sub>	I <sub>FG</sub> = -10uA	4.5	4.9	V <sub>CC</sub>	V
FG Output Voltage (L)	V <sub>FGH</sub>	I <sub>FG</sub> =10uA	–	–	0.5	V
Duty(Reference Value)		R <sub>CS</sub> =0.5Ω		50		%
<b>OUTPUT BLOCK</b>						
Saturation Voltage (upper TR)	V <sub>Oh</sub>	I <sub>O</sub> = -300mA	–	1.0	1.4	V
Saturation Voltage (lower TR)	V <sub>OI</sub>	I <sub>O</sub> =300mA	–	0.4	0.7	V
Torque Limit Current	I <sub>TL</sub>	R <sub>CS</sub> =0.5Ω	560	700	840	mA
<b>DIRECTION DETECTOR</b>						
DIR Output Voltage (H)	V <sub>DIRh</sub>	I <sub>FG</sub> =-10uA	4.5	4.7		V
Dir Output Voltage (L)	V <sub>DIRl</sub>	I <sub>FG</sub> =10uA	–	–	0.5	V
<b>SHORT BRAKE</b>						
On Voltage Range	V <sub>SBon</sub>		2.5	–	V <sub>CC</sub>	V
Off Voltage Range	V <sub>SBoff</sub>		0	–	1.0	V

**Electrical Characteristics (Continued)**BTL Drive Part ( $T_a=25^{\circ}\text{C}$ ,  $S_{VCC2}=12\text{V}$ ,  $V_{M2}=5\text{V}$ ,  $V_{M3}=12\text{V}$ ,  $R_L=8, 24\Omega$ )

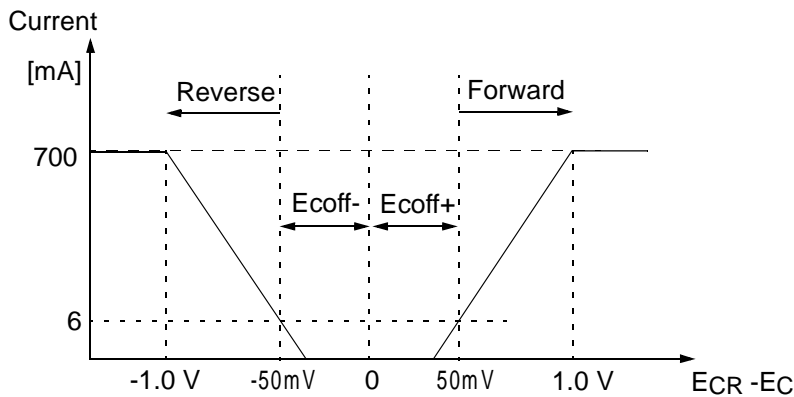
Parameter	Symbol	Condition	Min.	Typ.	Max.	Units
<b>CH1/CH2</b>						
Output Offset Voltage <sub>1,2</sub>	$V_{OF1/2}$		-95	–	95	mV
Maximum Output Voltage <sub>1,2</sub>	$V_{OM1/2}$	$V_{M2}=5\text{V}, R_L=8\Omega$	3.6	4.0	–	V
Voltage Gain	$G_{VC1/2}$	$V_{IN}=0.1\text{V}_{rms}, 1\text{kHz}$	12.0	14.0	16.0	dB
<b>CH3/CH4/CH5</b>						
Output Offset Voltage <sub>3,4,5</sub>	$V_{OF3/4/5}$		-95	–	95	mV
Maximum Output Voltage <sub>3,4,5</sub>	$V_{OM3/4/5}$	$V_{M3}=12\text{V}, R_L=24\Omega$	8.4	10.5	–	V
Voltage Gain	$G_{VC3/4/5}$	$V_{IN}=0.1\text{V}_{rms}, 1\text{kHz}$	16.0	18.0	20.0	dB
<b>OP-AMP PART</b>						
Common Mode Input Range	$V_{ICM}$		0	–	11.0	V
Input Bias Current	$I_B$		-300	-30		nA
Low Level Output Voltage	$V_{CL}$			0.2	0.5	V
High Level Output Voltage	$V_{OH}$		10.0	11	–	V
Output Driving Source Current	$I_{SOURCE}$		1	4.0	–	mA
Output Driving Sink Current	$I_{SINK}$		5	10	–	mA

## Application Information

### 1. TORQUE CONTROL & OUTPUT CURRENT CONTROL



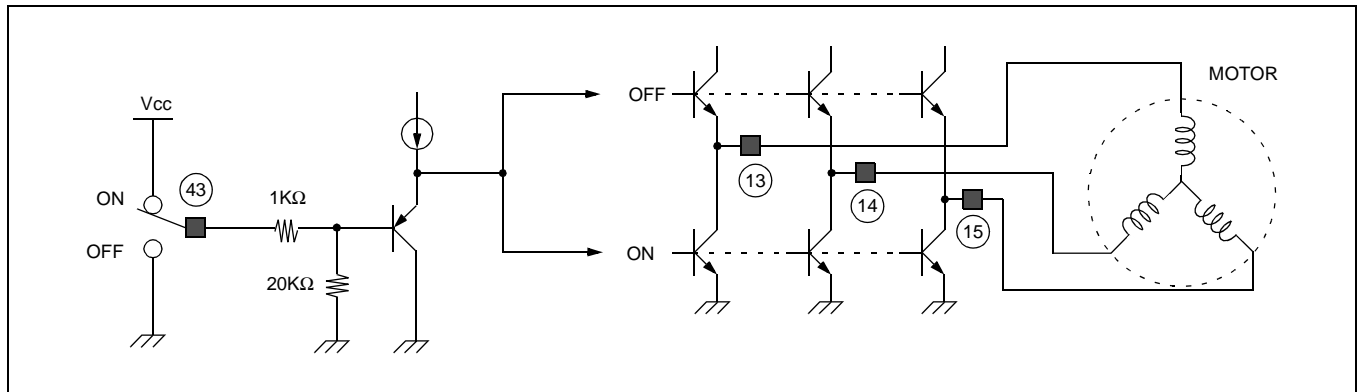
- 1) By amplifying the voltage difference between  $E_c$  and  $E_{cr}$  from Servo IC, the Torque Sense AMP produces the input ( $V_{AMP}$ ) for the Current Sense AMP.
- 2) The output current ( $I_O$ ) is converted into the voltage ( $V_{CS}$ ) through the sense resistor ( $R_{CS}$ ) and compared with the  $V_{AMP}$ . By the negative feedback loop, the sensed output voltage,  $V_{CS}$  is equal to the input  $V_{AMP}$ . Therefore, the output current ( $I_O$ ) is linearly controlled by the input  $V_{AMP}$ .
- 3) As a result, the signals,  $E_C$  and  $E_{CR}$  can control the velocity of the Motor by controlling the output current ( $I_O$ ) of the Driver.
- 4) The range of the torque voltage is as shown below.



	Rotation
$E_{CR} > E_c$	Forward rotation
$E_{CR} < E_c$	Stop after detecting reverse rotation

The input range of  $E_{CR}$ ,  $E_c$  is 0.2 V ~ 4.0 V (  $R_{CS} = 0.5[\Omega]$  )

## 2. SHORT BRAKE



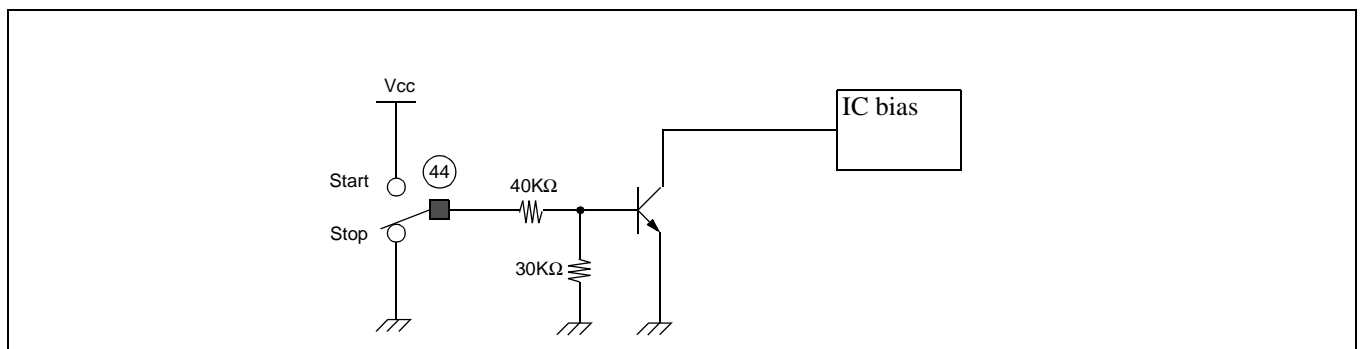
Pin # 43	Short Brake
HIGH	ON
LOW	OFF

When the pick-up part moves from the inner to the outer spindle of the CD, the Brake function of the reverse voltage is commonly employed to decrease the rotating velocity of the Spindle Motor.

However, if the Spindle Motor rotates rapidly, the Brake function of the reverse voltage may produce much heat at the Drive IC.

To remove this shortcoming and to enhance the braking efficiency, the Short Brake function is added to FAN8725. When the Short Brake function is activated, all upper Power TRs turn off and all lower Power TRs turn on, so as to make the rotating velocity of the motor slow down. But FG and DIR functions continue to operate normally.

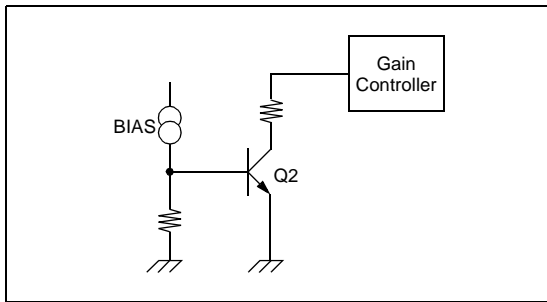
## 3. POWER SAVE



Pin # 44	Power Save
HIGH	Operate
LOW	Sleep mode

When PS function is activated, the chip is deactivated.

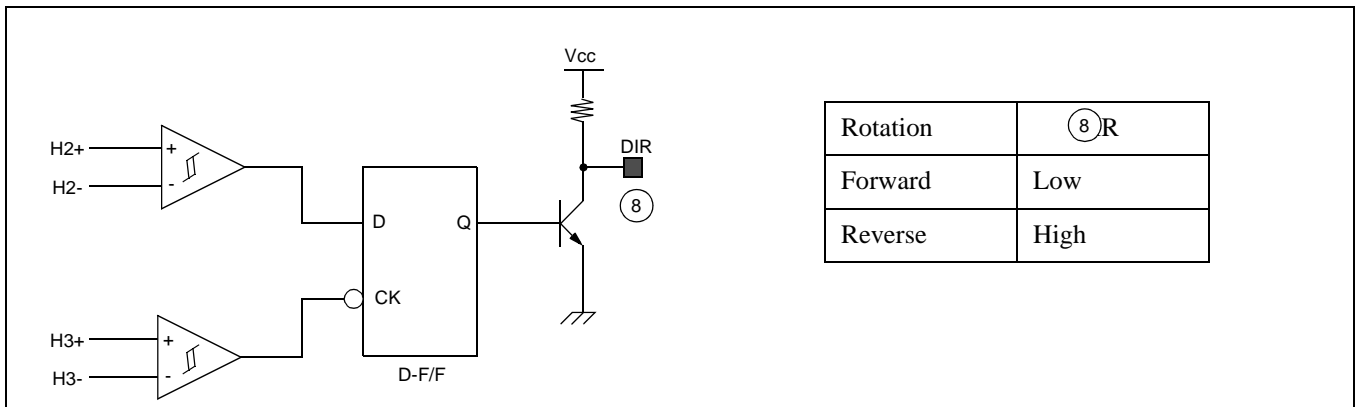
#### 4. TSD (THERMAL SHUTDOWN)



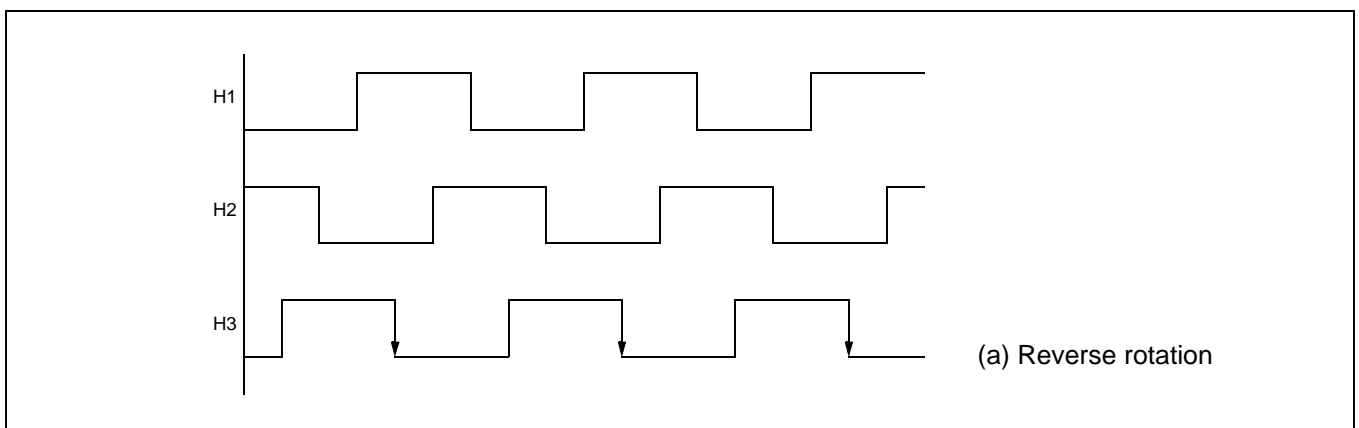
When the chip temperature rises up to about 175C(degree), the Q2 turns on so that the output driver will be shutdown. When the chip temperature falls off to about 150C(degree), then the Q2 turns off so that the driver is to operate normally. Thus, TSD has the temperature hysteresis of about 25C(degree).

-- The TSD circuit shuts down all the power drives(spindle and BTL power drives) excluding both CH1 and CH2 power drives(actuator part).

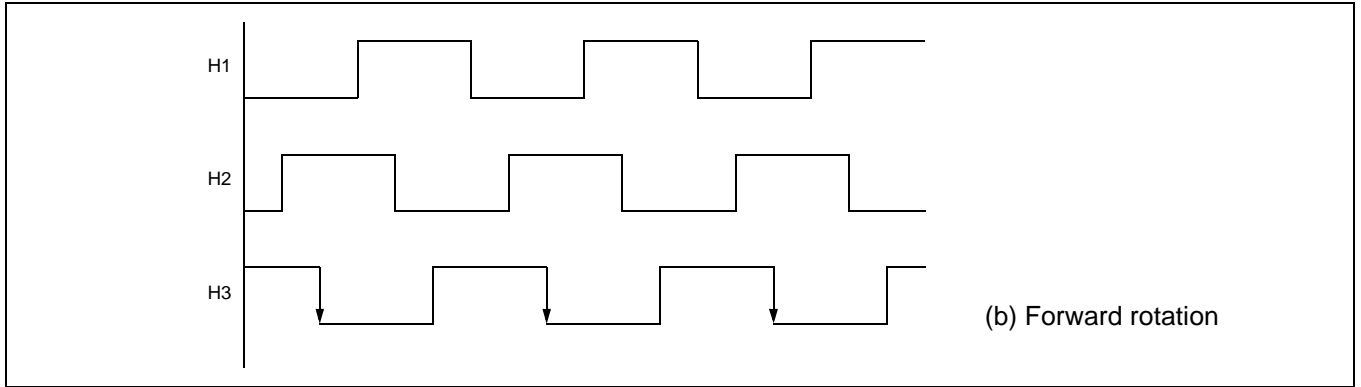
#### 5. ROTATIONAL DIRECTION DETECTION



- 1) The forward and the reverse rotations of the CD are simply detected by using the D-F/F and the truth table is shown in the above table.
- 2) The rotational direction of the CD can be explained by the output waveform of the Hall sensors. Let the three outputs of Hall sensors be H1, H2 and H3 respectively. When the spindle rotates in reverse direction, the Hall sensor output waveform are shown in Fig.(a). Thus the phases ordered in H1→H2→H3 with a 120° phase difference.

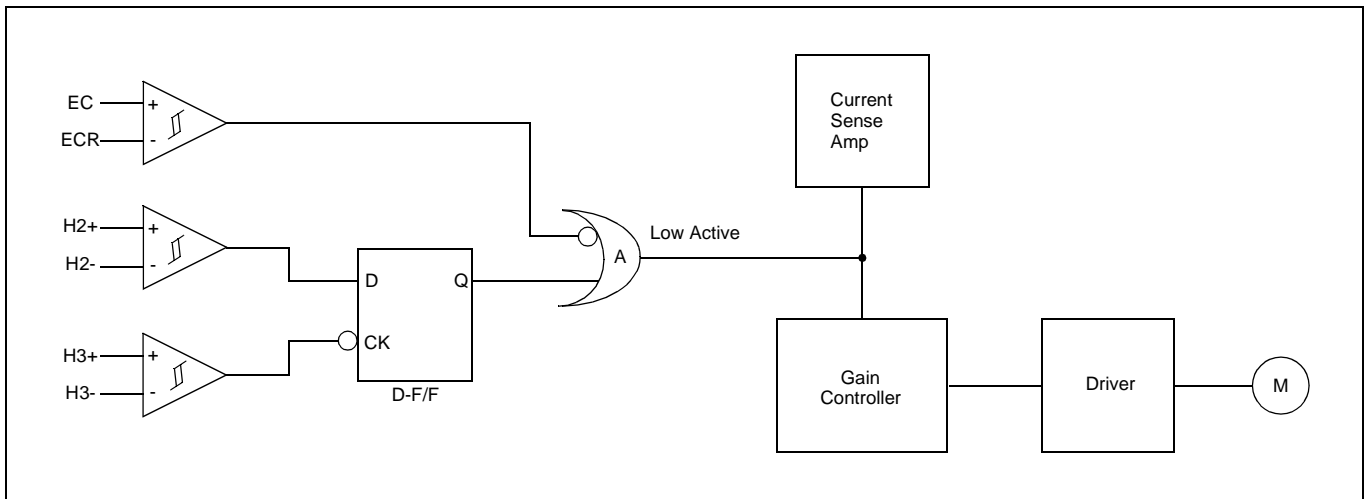


On the other hand, if the spindle rotates in forward rotation, the phase relationship is H3ÆH2ÆH1 as shown in Fig.(b)

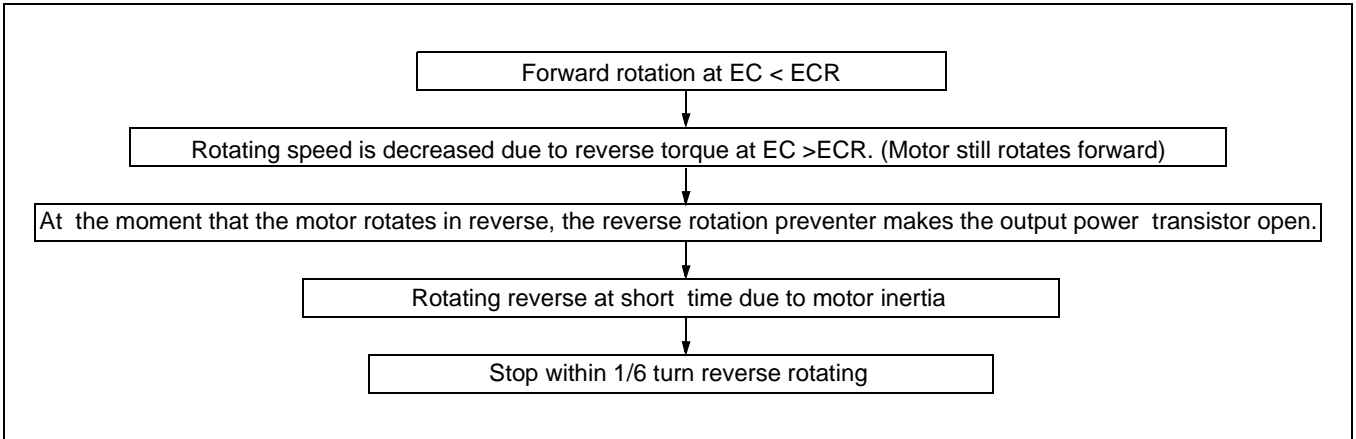


Therefore, the output of the rotational direction detector is Low, when the spindle rotates forward, while HIGH as in the case of the reverse rotation.

**6. REVERSE ROTATION PREVENTION**

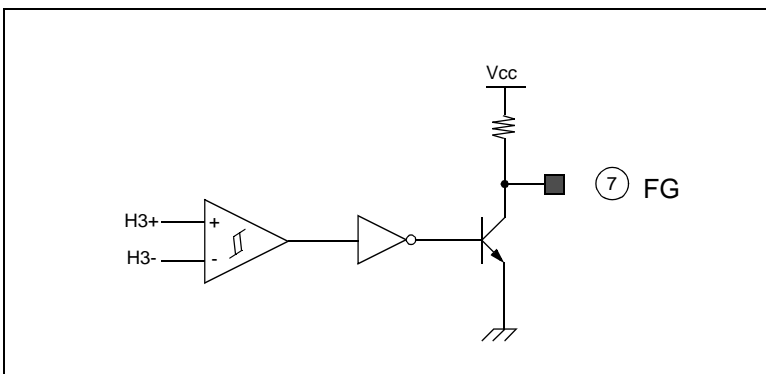


- 1) When the output of the OR Gate, A is LOW, it steers all the output current of the current sense Amp makes the current delivered to the Gain Controller zero. Thus the output current of the Driver becomes zero and the motor is stopped.
- 2) As in the state of the forward rotation, the D-F/F output, Q is HIGH and the motor rotates normally. At this state, if the control input is changed such that EC>ECR, then the motor rotates slowly more and more by the reverse commutation in the Driver. At the moment that the motor rotates in reverse direction, the D-F/F output becomes Low and the OR Gate output, thus, becomes LOW. This prevents the motor from rotating in reverse direction. The operation principle is shown in the table and the flow chart.

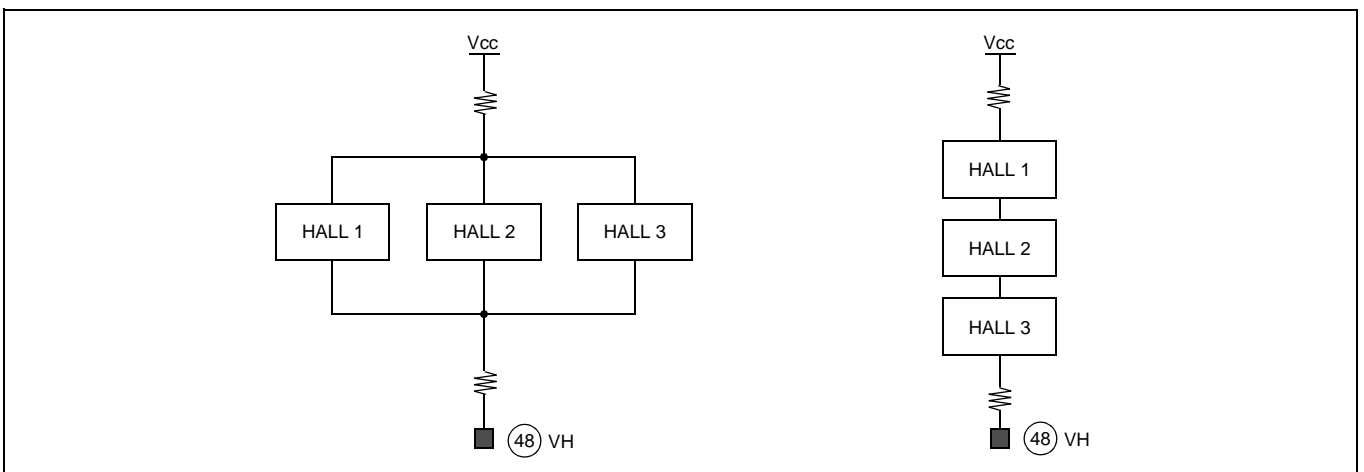


Rotation	H2	H3	D-F/F (Q)	Reverse Rotation Preventer	
				ECR>EC	EC>ECR
Forward	H	H→L	H	Forward	-
Reverse	L	H→L	L	-	Brake and Stop

**7. FG OUTPUT**

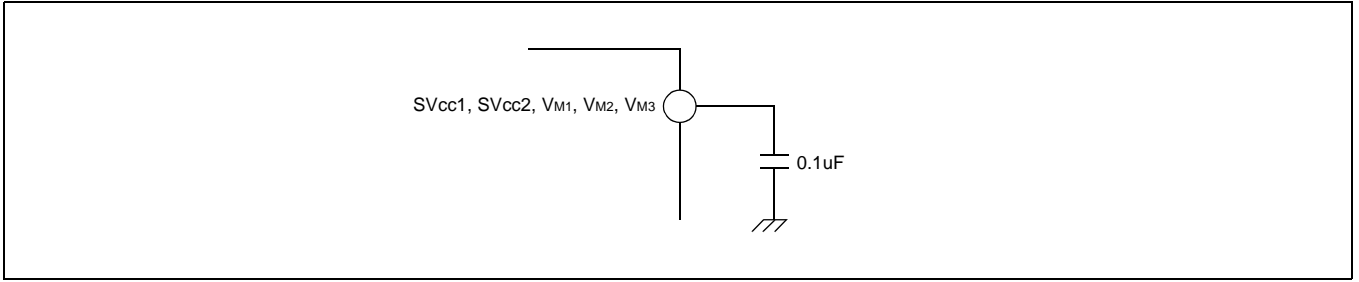


**8. HALL SENSOR CONNECTION**



**9. CONNECT A BYPASS CAPACITOR, FROM ALL THE SUPPLY VOLTAGE SOURCES TO GROUND.**

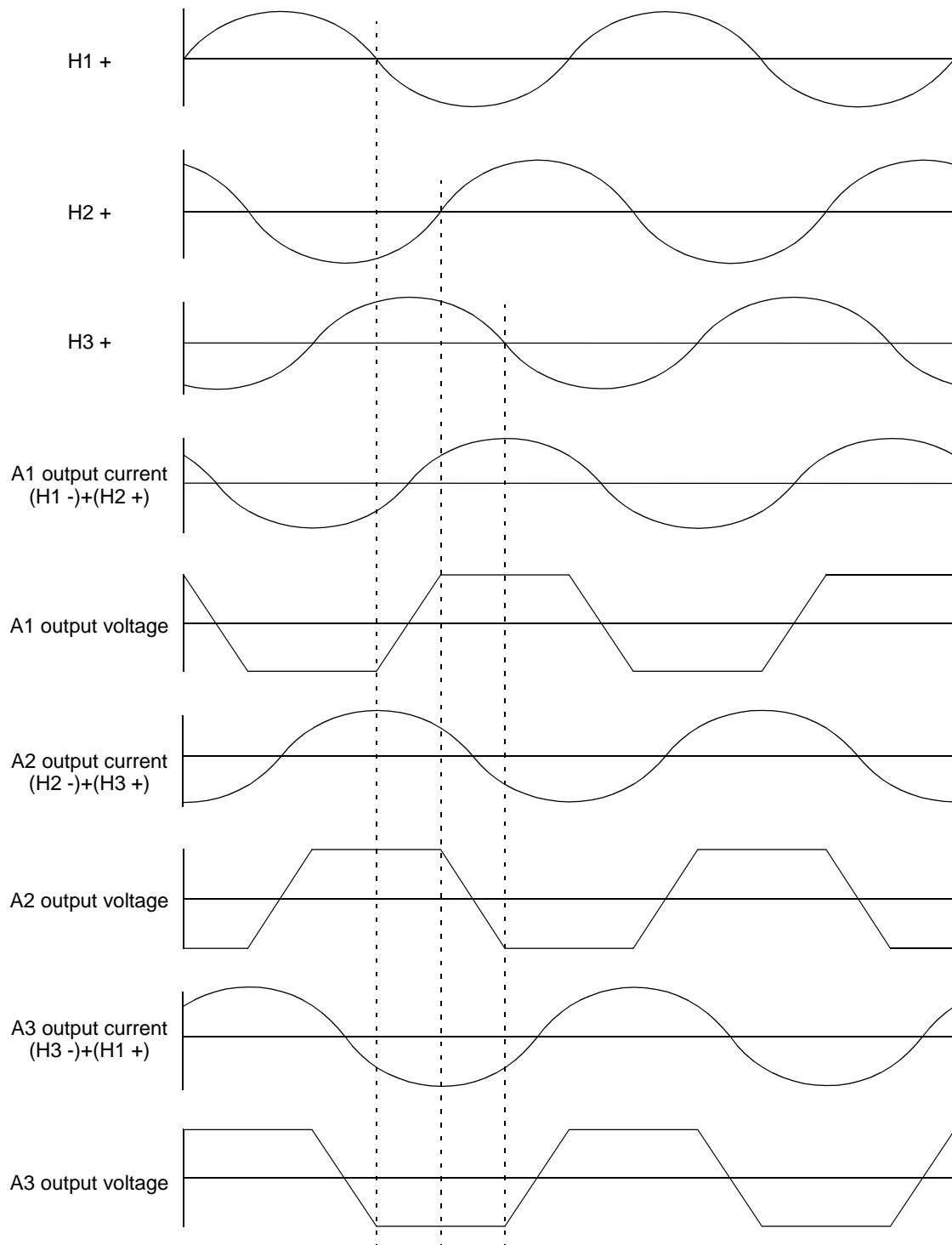
(Typically 0.1uF, or even higher)



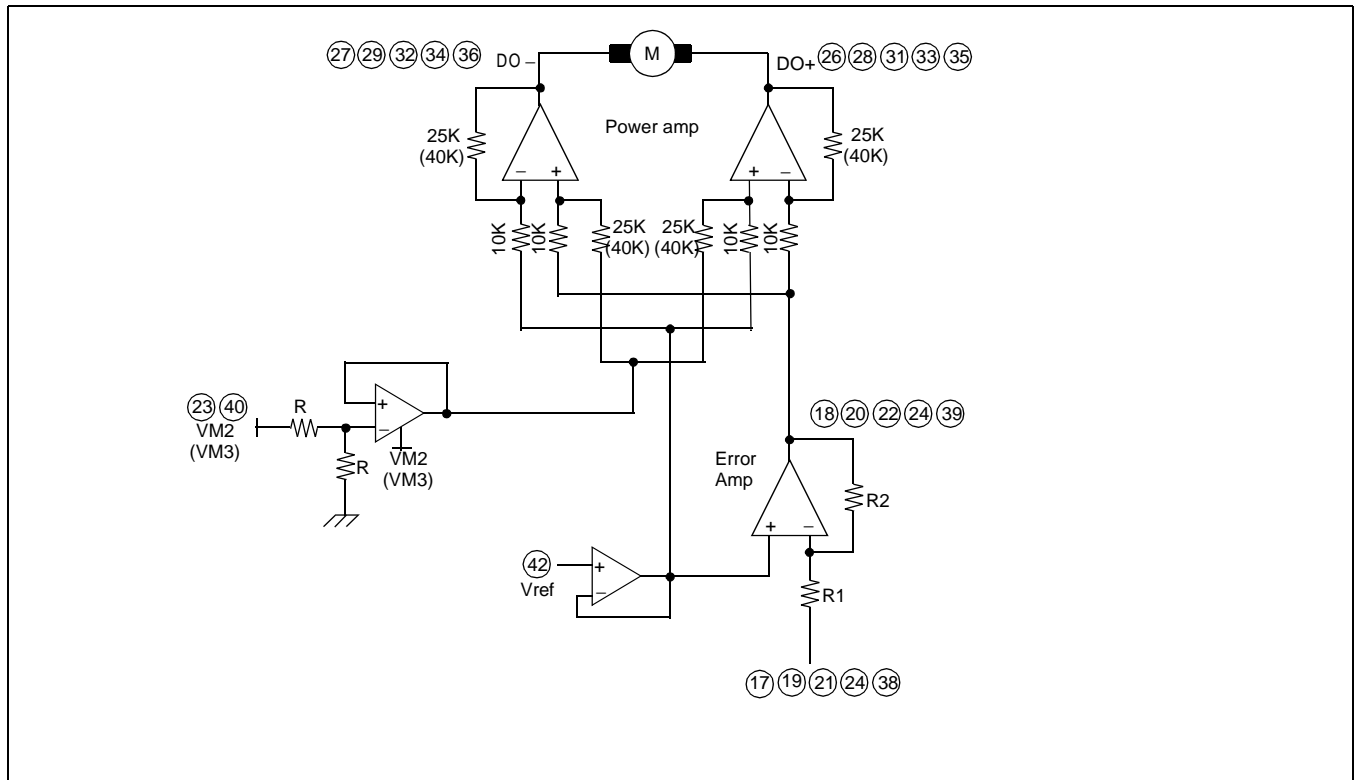
**10. THE HEAT RADIATION FIN IS CONNECTED TO THE INTERNAL GND OF THE PACKAGE.**

Connect the FIN to the external GND.

11. INPUT-OUTPUT TIMING CHART

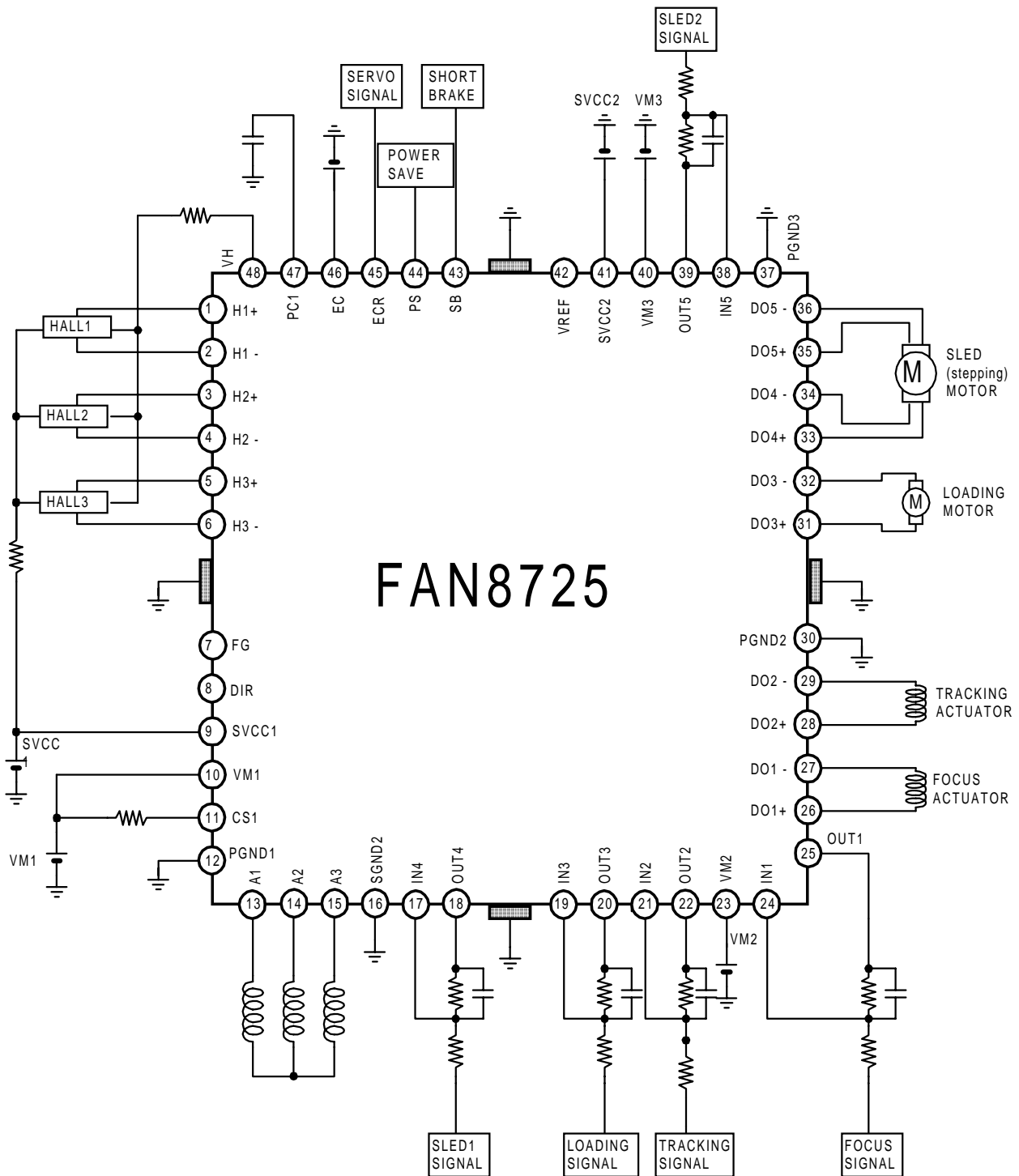


12. BTL DRIVE PART



- The reference voltage REF is given externally through pin 42.
- The error amp output signal is amplified by  $R2 / R1$  times and then fed to the power amp part.
- The power amp part produces the differential output voltages and drives the two output power amplifier circuit.
- Since the differential gain of the output amplifiers of CH1/CH2 is equal to  $2 \times (25K / 10K)$ , the output signal of the error amp is amplified by  $(R2 / R1) \times 5$ .
- Since the differential gain of the output amplifiers of CH3/CH4/CH5 is equal to  $2 \times (40K / 10K)$ , the output signal of the error amp is amplified by  $(R2 / R1) \times 8$ .
- If the total gain is insufficient, the input error amp can be used to increase the gain.
- The CH1/CH2 are generally used as actuator drive part so this channels are not affected by TSD circuit.

## Typical Application Circuits



**CD-MEDIA ONE CHIP IC**

## Ordering Information

Device	Package	Operating Temperature
FAN8725	48-QFPH-1414	-35°C ~ +85°C

**LIFE SUPPORT POLICY**

FAIRCHILD'S PRODUCTS ARE NOT AUTHORIZED FOR USE AS CRITICAL COMPONENTS IN LIFE SUPPORT DEVICES OR SYSTEMS WITHOUT THE EXPRESS WRITTEN APPROVAL OF THE PRESIDENT OF FAIRCHILD SEMICONDUCTOR CORPORATION. As used herein:

1. Life support devices or systems are devices or systems which, (a) are intended for surgical implant into the body, or (b) support or sustain life, and (c) whose failure to perform when properly used in accordance with instructions for use provided in the labeling, can be reasonably expected to result in a significant injury of the user.
2. A critical component in any component of a life support device or system whose failure to perform can be reasonably expected to cause the failure of the life support device or system, or to affect its safety or effectiveness.