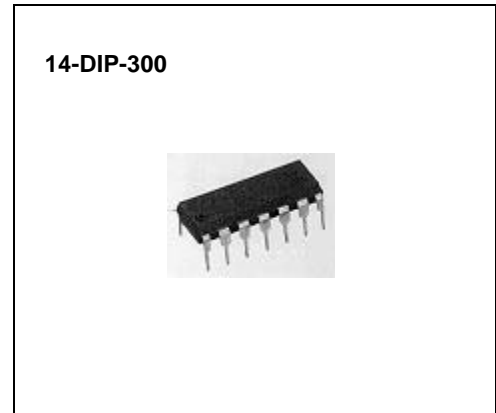


DC FAN MOTOR CONTROLLER

The KA3902 is a monolithic integrated circuit, designed for the PWM control of a DC fan motor current in an automotive systems. It allows the fan motor speed to be controlled linearly and efficiently.

FEATURES

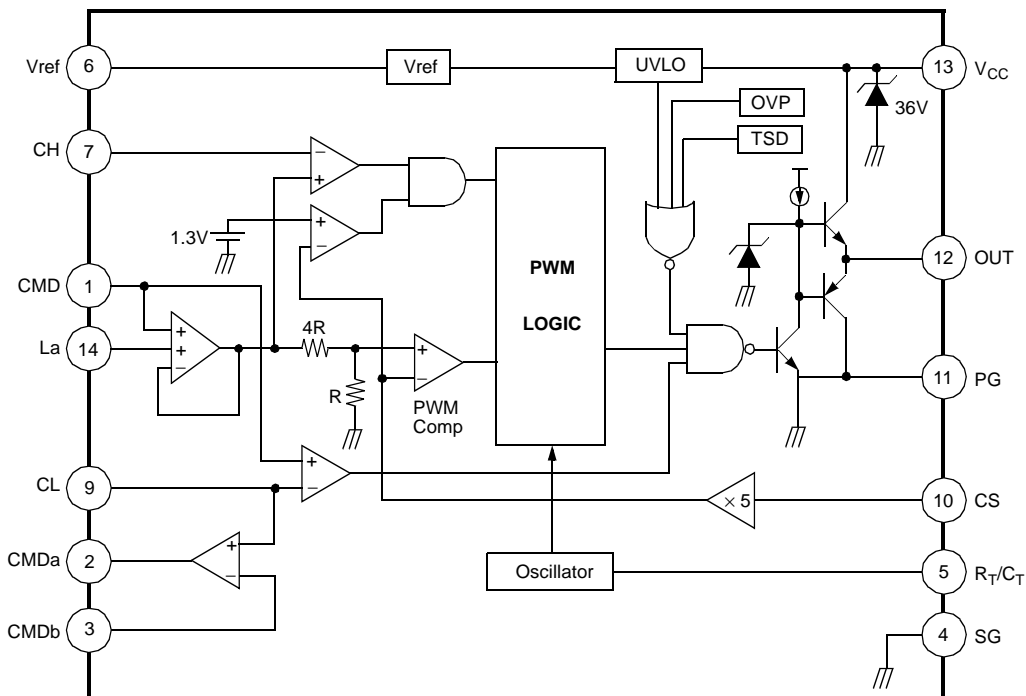
- Built-in PWM current control circuit
- Built-in 5V regulator
- Low supply current
- Stalled motor current limitation
- Built-in over voltage protection (OVP)
- Built-in over current protection (OCP)
- Built-in load dump protection
- Built-in thermal shutdown (TSD) circuit
- Built-in under voltage lockout (UVLO) circuit



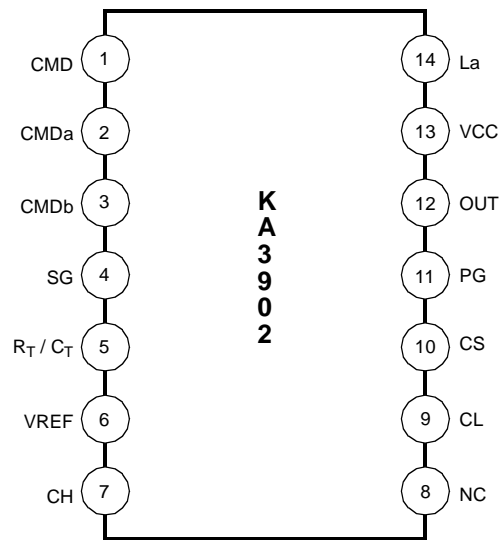
ORDERING INFORMATION

Device	Package	Operating Temperature
KA3902	14-DIP-300	-40°C ~ +90°C

BLOCK DIAGRAM



PIN CONNECTION



PIN DESCRIPTION

Pin No.	Symbol	Function
1	CMD	Motor current command input
2	CMDa	Optional OP amplifier output
3	CMDb	Optional OP amplifier (-) input
4	SG	Signal GND
5	R_T / C_T	Oscillator time constant
6	VREF	Voltage reference (5V)
7	CH	Maximum current reference input
8	NC	No connection
9	CL	Minimum current reference input
10	CS	Motor current sense voltage input
11	PG	Power GND
12	OUT	Drive output
13	V _{CC}	V _{CC}
14	La	Motor current maximum reference input

ABSOLUTE MAXIMUM RATING (Ta=25°C)

Characteristics	Symbol	Value	Unit
Supply voltage	V _{CC}	32	V
CMD input voltage	V _{CMD}	6	V
Peak output current	I _{OPK}	± 0.8	A
Power dissipation	P _D	1	W

OPERATING VOLTAGE (Ta=25°C)

Characteristics	Symbol	Min.	Typ.	Max.	Unit
Power supply voltage	V _{CC}	9.0	12.0	32.0	V

TEMPERATURE CHARACTERISTICS

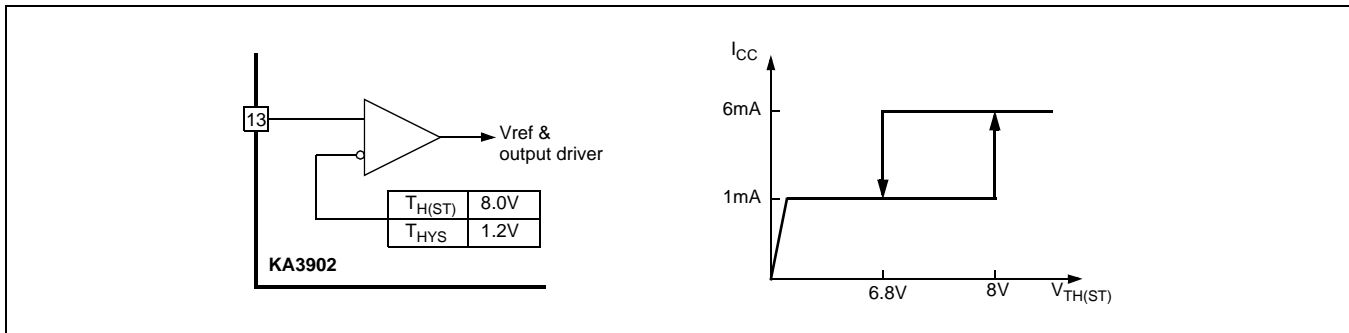
Characteristics	Symbol	Temp	Value	Unit
Vref temperature stability	V _{ST}	-40 ~ +90°C	200	°C
Frequency stability	F _{ST}	-40 ~ +90°C	20 ~ 30	°C
Operating temperature	T _{OPR}	-	-40 ~ +90	°C
Storage temperature	T _{STG}	-	-60 ~ +150	°C

ELECTRICAL CHARACTERISTICS(Unless otherwise, $T_a=25^\circ\text{C}$, $V_{CC}=5\text{V}$, $V_M=12\text{V}$)

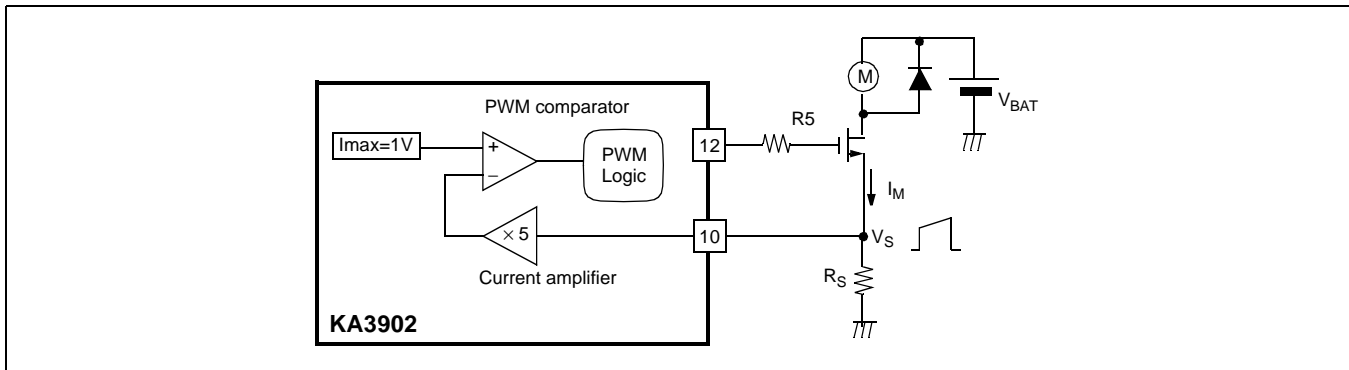
Characteristics	Symbol	Test conditions	Min.	Typ.	Max.	Unit
REFERENCE						
Reference voltage	V_{ref}	$I_{ref}=1\text{mA}$	4.75	5.0	5.25	V
Line regulation	ΔV_{ref1}	$V_{CC}=9\text{V} \sim 32\text{V}$	–	50	150	mV
Load regulation	ΔV_{ref2}	$I_{ref}=1\text{mA} \sim 10\text{mA}$	–	10	50	mV
UNDER VOLTAGE LOCKOUT (UVLO)						
Start threshold voltage	$V_{TH(ST)}$	–	7.5	8.0	8.5	V
Threshold hysteresis	V_{HYS}	–	1.0	1.2	1.4	V
PROTECTION						
Over voltage	O_{VP}	–	33	36	–	V
OSCILLATOR ($R_T=75\text{k}\Omega$, $C_T=1\text{nF}$)						
Frequency	f_{osc}	–	20	25	30	kHz
Duty cycle	Duty	–	90	95	–	%
CURRENT SENSING INPUT						
Threshold voltage	$V_{TH(ST)}$	$V_{CMD}=5\text{V}$	0.19	0.20	0.21	V
OUTPUT DRIVER						
Output voltage switching limit	V_{OLIM}	$V_{CC}=18\text{V}$, $C_{ld}=1\text{nF}$	–	15	–	V
Low output voltage	V_{OL1}	$I_{out}=20\text{mA}$	–	–	0.4	V
	V_{OL2}	$I_{out}=200\text{mA}$	–	–	2.2	V
High output voltage	V_{OH1}	$I_{out}=-20\text{mA}$	10.0	–	–	V
	V_{OH2}	$I_{out}=-200\text{mA}$	9.0	–	–	V
Rising time	T_r	$C_{ld}=1\text{nF}$	–	100	200	ns
Falling time	T_f	$C_{ld}=1\text{nF}$	–	100	200	ns
TOTAL STANDBY CURRENT						
Start-up current	I_{ST}	$V_{CC}=7\text{V}$	–	1.0	1.5	mA
Operating supply current	I_{CC}	$V_{CC}=9\text{V}$	–	6.0	8.0	mA

APPLICATION INFORMATION

1. UNDER VOLTAGE LOCKOUT (UVLO)



2. CURRENT SENSING CIRCUIT



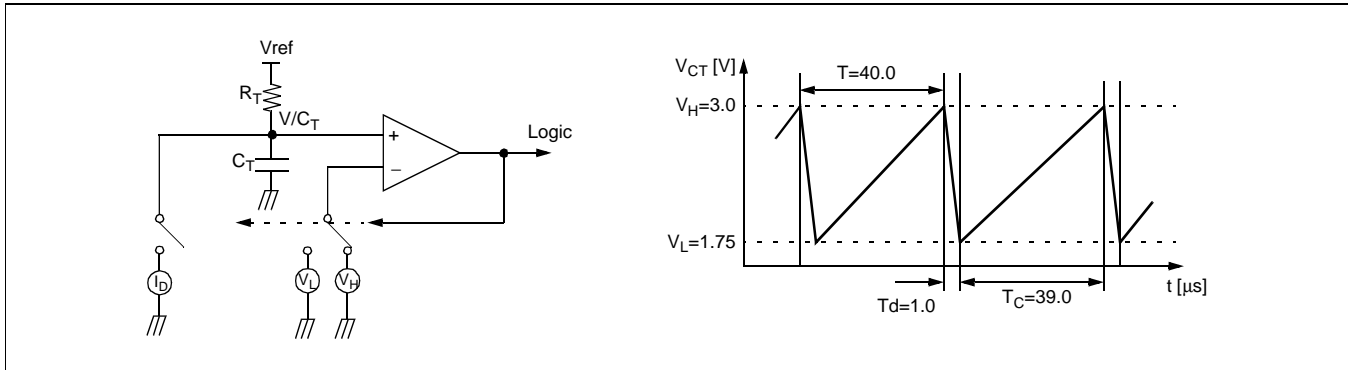
The peak current, $I_{M(MAX)} = V_S / R_S$
 For example, if a required maximum current, $I_{M(MAX)} = 20[A]$

$$R_S = \frac{1V/5}{20A} = 10[m\Omega]$$

3. THERMAL SHUTDOWN (TSD)

When the chip, temperature rises up to 150°C, the thermal shutdown (TSD) circuit is activated and the output driver will be turned off, and then the will be turned on again at 125°C.

4. OSCILLATOR COMPONENT SELECTION



The oscillator timing components can be calculated as follows:

$$T_C = R_T \times C_T \times \ln[(V_{ref} - V_L)/(V_{ref} - V_H)]$$

$$T_D = C_T \times [(V_H - V_L)/I_D]$$

$$f_{osc} = 1/(T_C + T_D)$$

$$= 1.875/(R_T \times C_T)$$

$$Duty = T_C \times f_{osc} \times 100$$

For example, if $f_{osc} = 25\text{kHz}$ and $duty = 95\%$

$$C_T = (T_D \times I_D)/(V_H - V_L)$$

$$= 1000[pF]$$

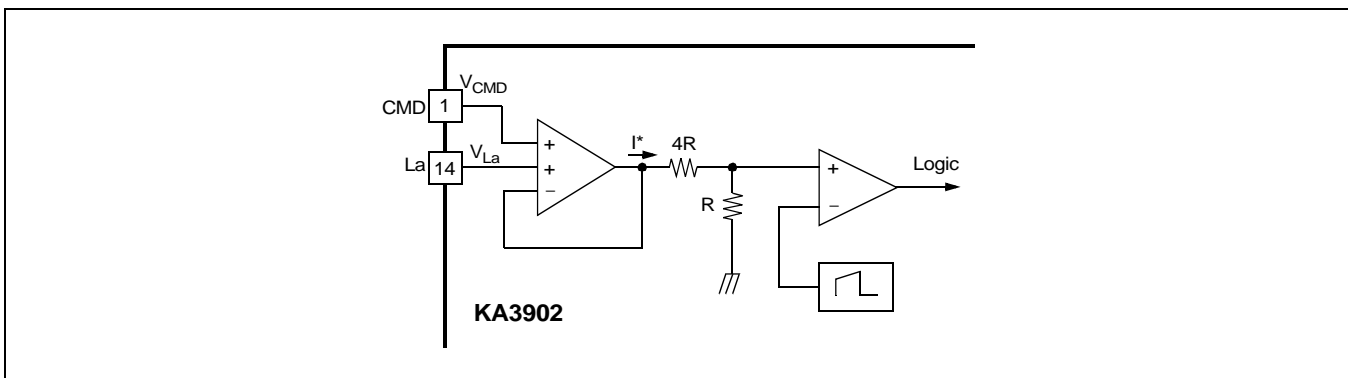
$$R_T = 1.875/(f_{osc} \times C_T)$$

$$= 1.875/(25\text{kHz} \times 1000pF)$$

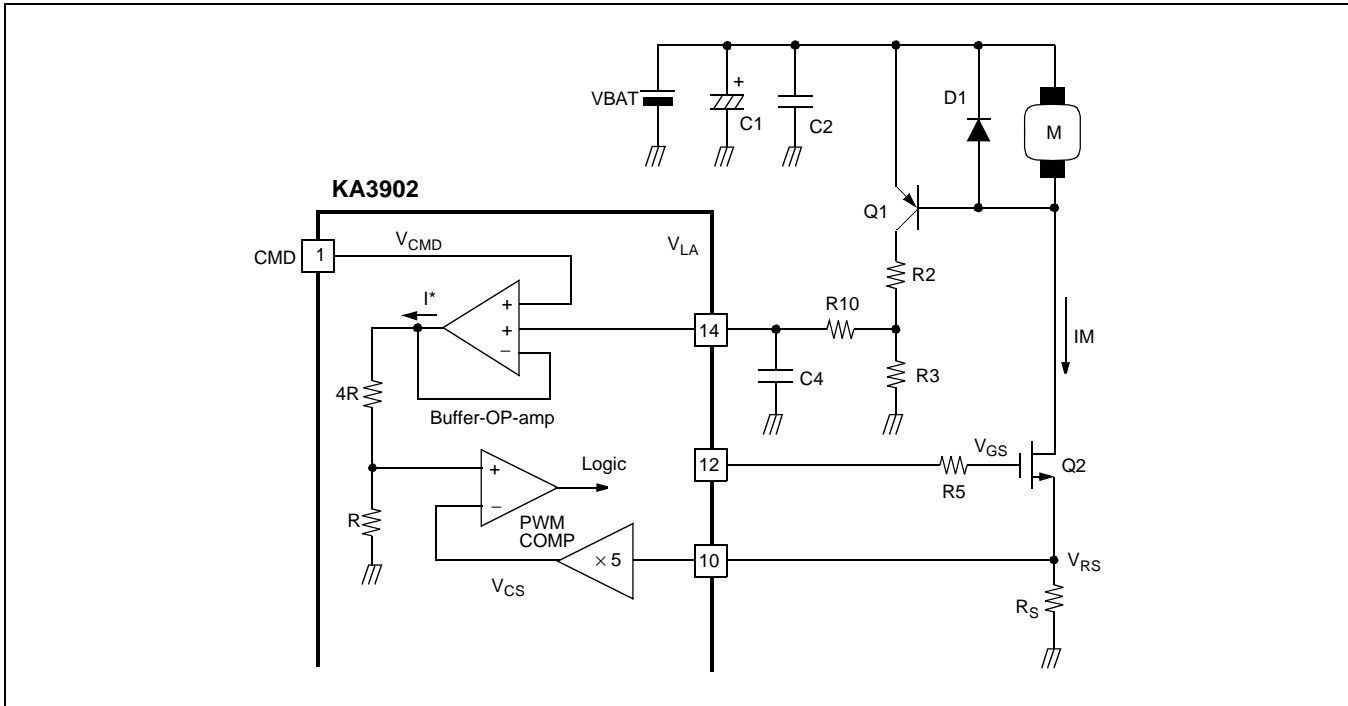
$$= 75[k\Omega]$$

5. CURRENT COMMAND INPUT SECTION

The current command I^* selects the lower value between V_{CMD} and V_{La} .



6. MOTOR STALL CURRENT LIMITATION



At the steady state, the terminal voltage on a motor is consisted of a back EMF and the voltage drop on the armature resistors. When the motor happens to be stalled, the back EMF becomes zero, and the motor current (I_M) is quickly increased until a maximum values.

Therefore the duty of the pin #12 output becomes lower because of the increase of the sense voltage (V_{RS}). Also it makes the voltage (V_{La}) be lowered, then it makes the duty become lower again.

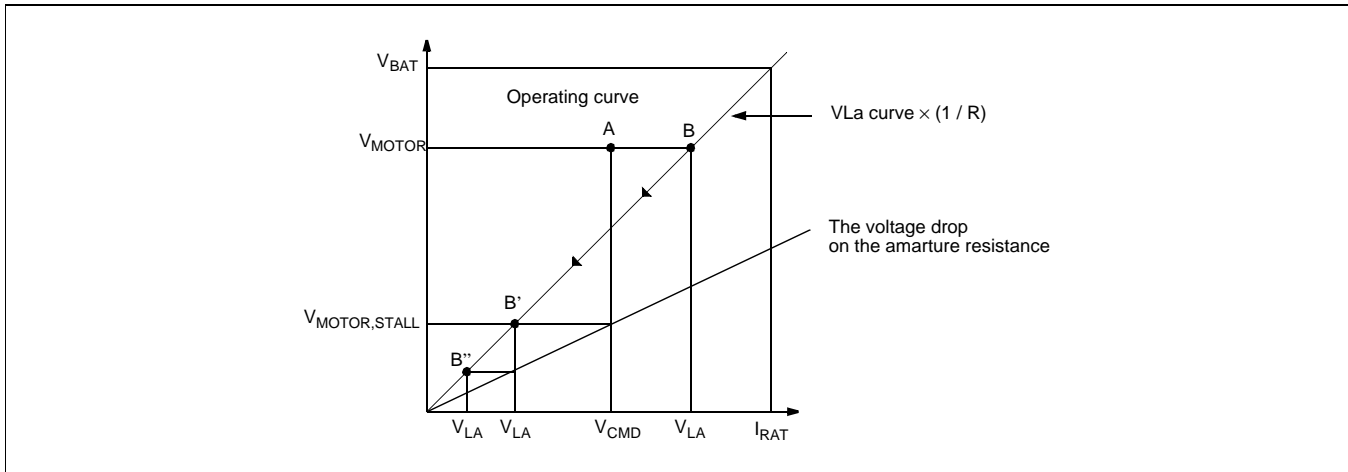
This mechanism makes the motor current hold very low value in the stalled motor state.

The voltage on pin #14 (V_{La}) is calculated as follows:

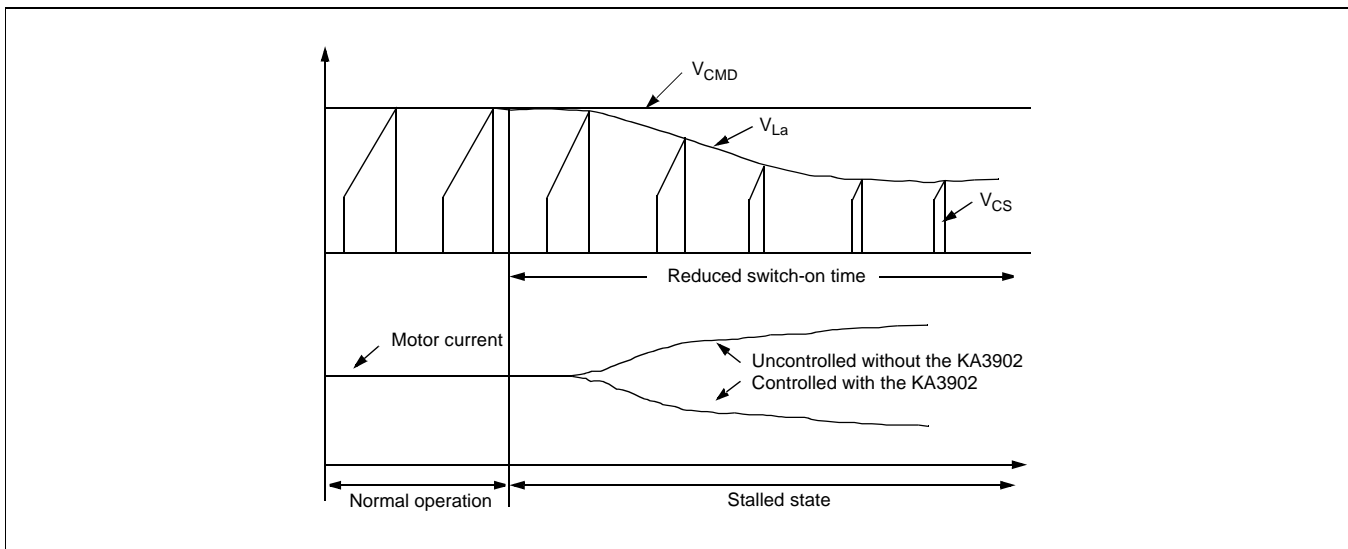
$$V_{La} = V_{BAT} \times D \times \frac{R3}{R2 + R3} \quad \text{Assumed the saturation voltage of Q1 is zero.}$$

We can choose the ratio of the resistors, R2 and R3, as follows:

- Applied the rated voltage on motor, and then measured the current I_{RAT}
- Matched the maximum command current, $V_{CMD,MAX}$ to I_{RAT}
 $V_{CMD,MAX} = V_{La,MAX} = R_S \times I_{RAT} \times 5 \times 5$
 for example, if $R_S = 100m\Omega$ and $I_{RAT} = 20[A]$ at $V_{BAT} = 13[V]$,
 $V_{CMD,MAX} = V_{La,MAX} = 10m\Omega \times 20 \times 25 = 5V$
- $V_{La,MAX} = 5V = V_{BAT} \times 1 \times R3 / (R2 + R3)$
 $R = R3 / (R2 + R3) = V_{CMD,MAX} / V_{BAT} = 5 / 13$
 Therefore, $R2 : R3 = 8 : 5$



The buffer OP-amp selects the lower command between V_{CMD} and V_{La} so as to limit the stalled motor current to very low in the above figure. Because of much larger V_{La} than V_{CMD} , the motor operating point stays at A. But the point gradually moves toward B' and then B'' through the curve from the instance of stall as the below figure.



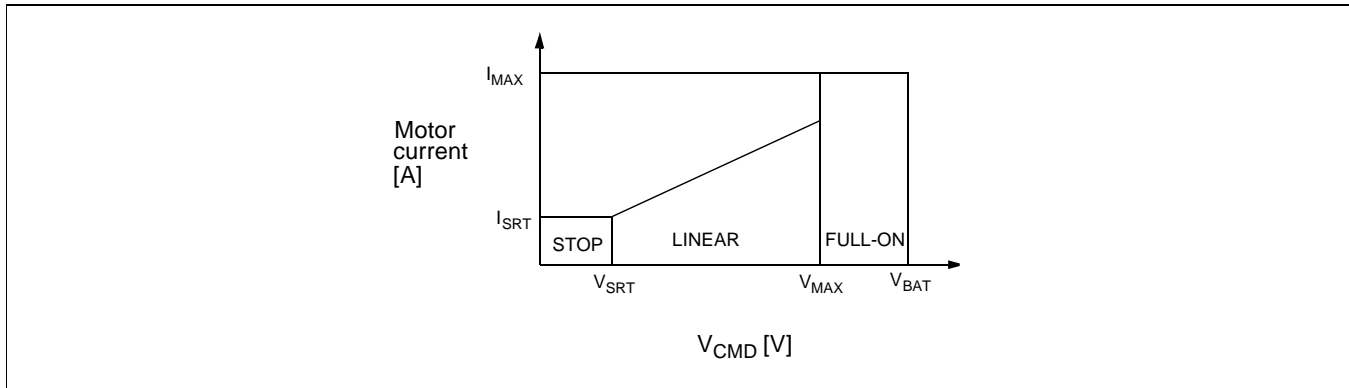
7. MODE SELECTION

The KA3902 has three operation regions as follows:

- STOP: Turned-off the power MOSFET
- LINEAR: Linearly controlled the power MOSFET
- FULL-ON: Fully turned-on the power MOSFET

The voltage, V_{SRT} (PIN #9) and V_{MAX} (PIN #7), in the application circuit are as follows:

- V_{SRT} (PIN #9) = $V_{ref} \times R9 / (R7 + R8 + R9)$
- V_{MAX} (PIN #7) = $V_{ref} \times (R8 + R9) / (R7 + R8 + R9)$



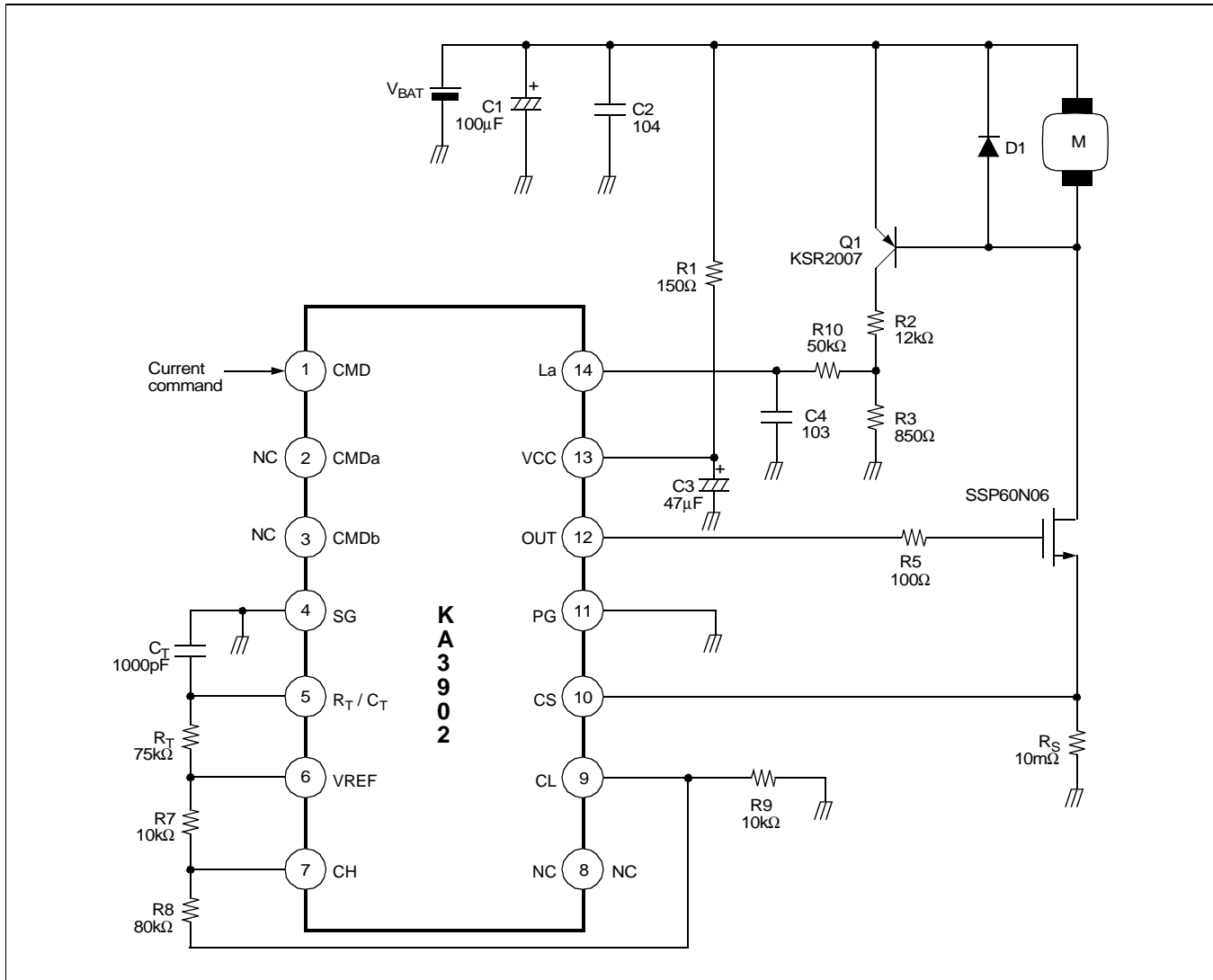
8. OVER VOLTAGE PROTECTOR (OVP)

If the voltage, $V_{BAT} \geq 36[V]$, the output (pin #12) is grounded, and the switching device (power MOSFET) is turned-off, and the motor is stopped. Then if the voltage, $V_{BAT} \rightarrow 36[V]$, the switching device is turned-on again, and the motor is operated.

9. TOTEM-POLE OUTPUT

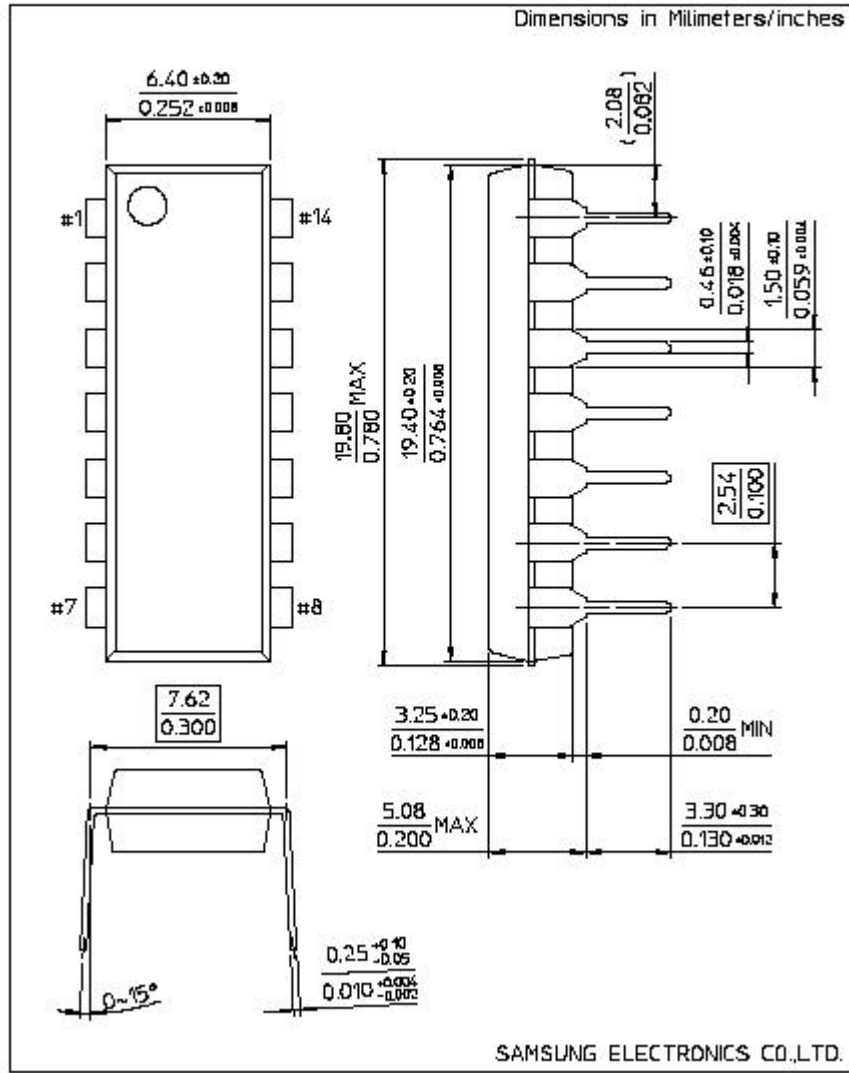
The KA3902 has a single totem-pole output driver which can be drive current to peak $\pm 0.8[A]$.

TYPICAL APPLICATION



PACKAGE DIMENSION

14-DIP-300



TRADEMARKS

The following are registered and unregistered trademarks Fairchild Semiconductor owns or is authorized to use and is not intended to be an exhaustive list of all such trademarks.

ACEx™	ISOPLANAR™
CoolFET™	MICROWIRE™
CROSSVOLT™	POP™
E ² CMOS™	PowerTrench™
FACT™	QS™
FACT Quiet Series™	Quiet Series™
FAST®	SuperSOT™-3
FASTr™	SuperSOT™-6
GTO™	SuperSOT™-8
HiSeC™	TinyLogic™

DISCLAIMER

FAIRCHILD SEMICONDUCTOR RESERVES THE RIGHT TO MAKE CHANGES WITHOUT FURTHER NOTICE TO ANY PRODUCTS HEREIN TO IMPROVE RELIABILITY, FUNCTION OR DESIGN. FAIRCHILD DOES NOT ASSUME ANY LIABILITY ARISING OUT OF THE APPLICATION OR USE OF ANY PRODUCT OR CIRCUIT DESCRIBED HEREIN; NEITHER DOES IT CONVEY ANY LICENSE UNDER ITS PATENT RIGHTS, NOR THE RIGHTS OF OTHERS.

LIFE SUPPORT POLICY

FAIRCHILD'S PRODUCTS ARE NOT AUTHORIZED FOR USE AS CRITICAL COMPONENTS IN LIFE SUPPORT DEVICES OR SYSTEMS WITHOUT THE EXPRESS WRITTEN APPROVAL OF FAIRCHILD SEMICONDUCTOR CORPORATION. As used herein:

1. Life support devices or systems are devices or systems which, (a) are intended for surgical implant into the body, or (b) support or sustain life, or (c) whose failure to perform when properly used in accordance with instructions for use provided in the labeling, can be reasonably expected to result in significant injury to the user.
2. A critical component is any component of a life support device or system whose failure to perform can be reasonably expected to cause the failure of the life support device or system, or to affect its safety or effectiveness.

PRODUCT STATUS DEFINITIONS

Definition of Terms

Datasheet Identification	Product Status	Definition
Advance Information	Formative or In Design	This datasheet contains the design specifications for product development. Specifications may change in any manner without notice.
Preliminary	First Production	This datasheet contains preliminary data, and supplementary data will be published at a later date. Fairchild Semiconductor reserves the right to make changes at any time without notice in order to improve design.
No Identification Needed	Full Production	This datasheet contains final specifications. Fairchild Semiconductor reserves the right to make changes at any time without notice in order to improve design.
Obsolete	Not In Production	This datasheet contains specifications on a product that has been discontinued by Fairchild semiconductor. The datasheet is printed for reference information only.