

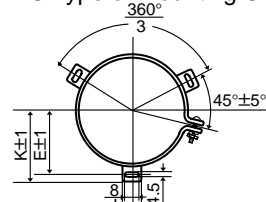
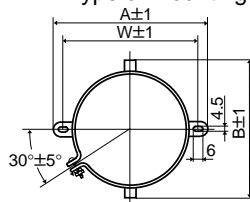
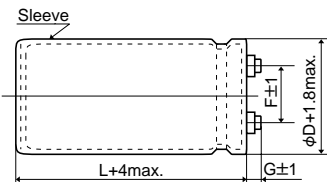
◆SPECIFICATIONS

Items	Characteristics						
Category							
Temperature Range	-25 to +105°C						
Rated Voltage Range	350 to 450V _{dc}						
Capacitance Tolerance	±20% (M) (at 20°C, 120Hz)						
Leakage Current	I=0.02CV or 5mA, whichever is smaller. Where, I : Max. leakage current (μA), C : Nominal capacitance (μF), V : Rated voltage (V) (at 20°C after 5 minutes)						
Dissipation Factor (tanδ)	0.25 max. (at 20°C, 120Hz)						
Low Temperature Characteristics	Capacitance change $C(-25°C)/C(+20°C) \geq 0.7$ (at 120Hz)						
Insulation Resistance	When measured between the terminals shorted each other and the mounting clamp on the insulating sleeve covering the case by using an insulation resistance meter of 500V _{dc} , the insulation resistance shall not be less than 100MΩ.						
Insulation Withstanding Voltage	When a voltage of 2000V _{ac} is applied for 1 minute between the terminals shorted each other and the mounting clamp on the insulating sleeve covering the case, there shall not be electrical damage.						
Endurance	The following specifications shall be satisfied when the capacitors are restored to 20°C after subjected to DC voltage with the rated ripple current is applied for 5000 hours at 105°C. <table border="1"> <tr> <td>Capacitance change</td> <td>≤±30% of the initial value</td> </tr> <tr> <td>D.F. (tanδ)</td> <td>≤300% of the initial specified value</td> </tr> <tr> <td>Leakage current</td> <td>≤The initial specified value</td> </tr> </table>	Capacitance change	≤±30% of the initial value	D.F. (tanδ)	≤300% of the initial specified value	Leakage current	≤The initial specified value
Capacitance change	≤±30% of the initial value						
D.F. (tanδ)	≤300% of the initial specified value						
Leakage current	≤The initial specified value						
Shelf Life	The following specifications shall be satisfied when the capacitors are restored to 20°C after exposing them for 500 hours at 105°C without voltage applied. <table border="1"> <tr> <td>Capacitance change</td> <td>≤±20% of the initial value</td> </tr> <tr> <td>D.F. (tanδ)</td> <td>≤300% of the initial specified value</td> </tr> <tr> <td>Leakage current</td> <td>≤The initial specified value</td> </tr> </table>	Capacitance change	≤±20% of the initial value	D.F. (tanδ)	≤300% of the initial specified value	Leakage current	≤The initial specified value
Capacitance change	≤±20% of the initial value						
D.F. (tanδ)	≤300% of the initial specified value						
Leakage current	≤The initial specified value						

◆DIMENSIONS (Terminal Type=LGSN) [mm]

●B Type of Mounting Clamp

●C Type of Mounting Clamp



φD	A	B	W	F
63.5	90	76	80	28.0
76	104.5	90	93.5	31.5

φD	E	K	J	F
63.5	38.1	43.5	14.0	28.0
76	44.5	50.0	14.0	31.5
89	50.8	56.5	16.0	31.5

<Screw specifications>

Plus hexagon-headed screw:

M5×0.8×10

Maximum screw tightening torque:

3.23Nm

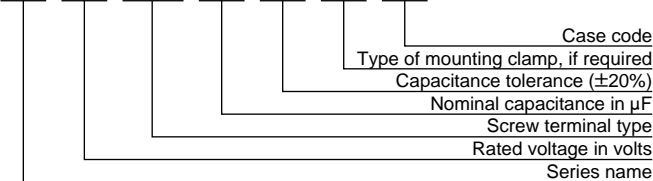
φ63.5 : G=6

φ76 & φ89 : G=5

* The screw and the mounting clamp are separately supplied and not attached to the product.

◆PART NUMBERING SYSTEM

LX 350 LGSN 10000 M C F15



◆STANDARD RATINGS

μF	350			400			450		
	400			450			500		
	63.5	76	89	63.5	76	89	63.5	76	89
2,200							63.5×115 7.0		
2,700				63.5×115 7.8			63.5×130 8.2	76×115 8.6	
3,300	63.5×115 8.5			63.5×130 9.0			63.5×155 9.8	76×130 10.0	
3,900	63.5×130 9.8			63.5×155 10.6	76×115 11.7		63.5×170 11.1		
4,700	63.5×155 11.7	76×115 11.3		63.5×170 12.2	76×130 11.9			76×155 12.8	
5,600	63.5×170 13.3	76×130 13.0		63.5×190 14.0	76×155 14.0			76×190 15.4	89×155 15.3
6,800	63.5×190 15.4	76×155 15.5			76×170 16.2				89×170 17.7
8,200		76×170 17.8				89×155 18.5			89×190 20.3
10,000			89×155 20.5			89×190 22.4			
12,000			89×190 24.6	← Upper : Case size φD×L (mm) ← Lower : Rated ripple current (Arms) at 105°C, 120Hz					

◆CASE CODE

φD (mm)	L (mm)	115	130	155	170	190
63.5		D11	D13	D15	D17	D19
76		E11	E13	E15	E17	E19
89		—	—	F15	F17	F19

◆RATED RIPPLE CURRENT MULTIPLIERS
●Frequency Multipliers

Frequency (Hz)	50	120	300	1k	3k
Coefficient	0.8	1.0	1.1	1.3	1.4

Note : The endurance of capacitors is shorted with internal heating produced by ripple currents at the rate of halving the lifetime with every 5 to 10°C rise. When long life performance is required in actual use, the rms ripple current has to be reduced. Also, for the LX series capacitors, using them at operating voltage less than their rated voltage can extend their lifetime. For the details, please contact a representative of Nippon Chemi-Con.