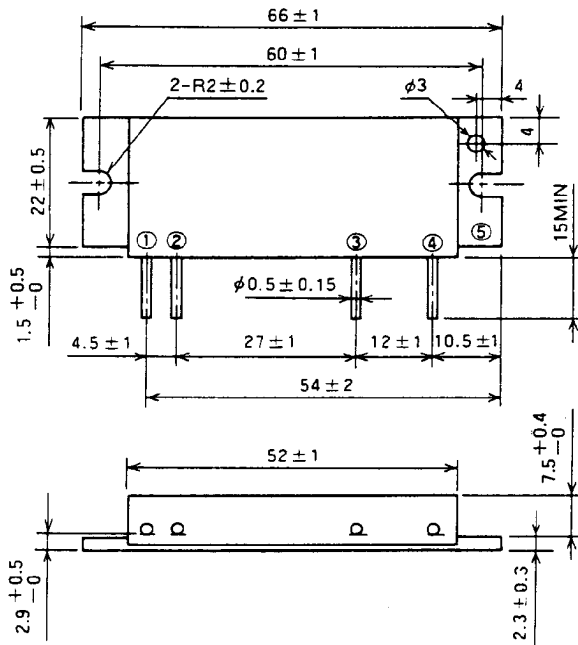


# M57774S

185-200MHz, 12.5V, 30W, FM MOBILE RADIO

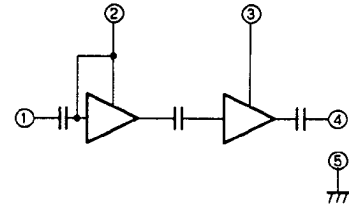
## OUTLINE DRAWING

Dimensions in mm



H2

## BLOCK DIAGRAM



PIN :

- ① Pin : RF INPUT
- ② Vcc1 : 1st. DC SUPPLY
- ③ Vcc2 : 2nd. DC SUPPLY
- ④ Po : RF OUTPUT
- ⑤ GND : FIN

## ABSOLUTE MAXIMUM RATINGS (Tc = 25°C unless otherwise noted)

Symbol	Parameter	Conditions	Ratings	Unit
Vcc	Supply voltage		17	V
Icc	Total current		7	A
Pin(max)	Input power	Vcc1 ≤ 12.5V, ZG = ZL = 50 Ω	600	mW
PO(max)	Output power	ZG = ZL = 50 Ω	40	W
Tc(OP)	Operation case temperature		-30 to 110	°C
Tstg	Storage temperature		-40 to 110	°C

Note. Above parameters are guaranteed independently.

## ELECTRICAL CHARACTERISTICS (Tc = 25°C unless otherwise noted)

Symbol	Parameter	Test conditions	Limits		Unit
			Min	Max	
f	Frequency range	Vcc1 = Vcc2 = 12.5V Pin = 200mW ZG = ZL = 50 Ω	185	200	MHz
Po	Output power		30		W
ηT	Total efficiency		43		%
2fo	2nd. harmonic			-25	dBc
3fo	3rd. harmonic			-30	dBc
ρin	Input VSWR			2.8	-
-	Load VSWR tolerance	Vcc1 = Vcc2 = 15.2V Po = 30W (Pin : controlled) Load VSWR ≥ 20:1 (All phase) ZG = 50Ω	No degradation or destroy		-

Note. Above parameters, ratings, limits and conditions are subject to change.