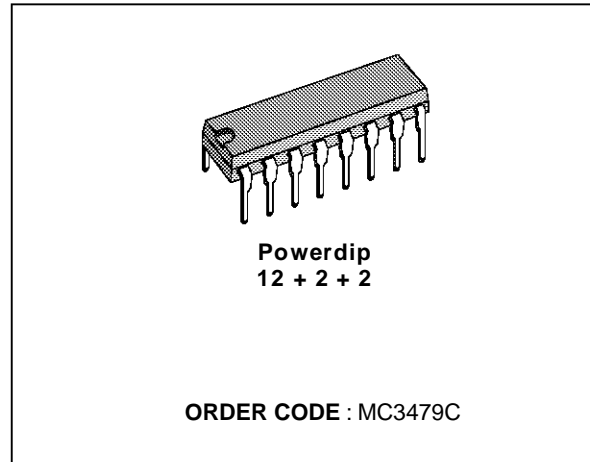


STEPPER MOTOR DRIVER

- SINGLE SUPPLY OPERATION + 7.2 V TO + 16 V
- 350 mA/ COIL DRIVE CAPABILITY
- BUILT IN FAST PROTECTION DIODES
- SELECTABLE CW/CCW AND FULL/HALF STEP OPERATION
- SELECTABLE HIGH/LOW OUTPUT IMPEDANCE (HALF STEP MODE)
- TTL/CMOS COMPATIBLE INPUTS
- INPUT HYSTERESIS : 250 mV TYP.
- PHASE LOGIC CAN BE INITIALIZED TO PHASE A
- PHASE A OUTPUT DRIVE STATE INDICATION



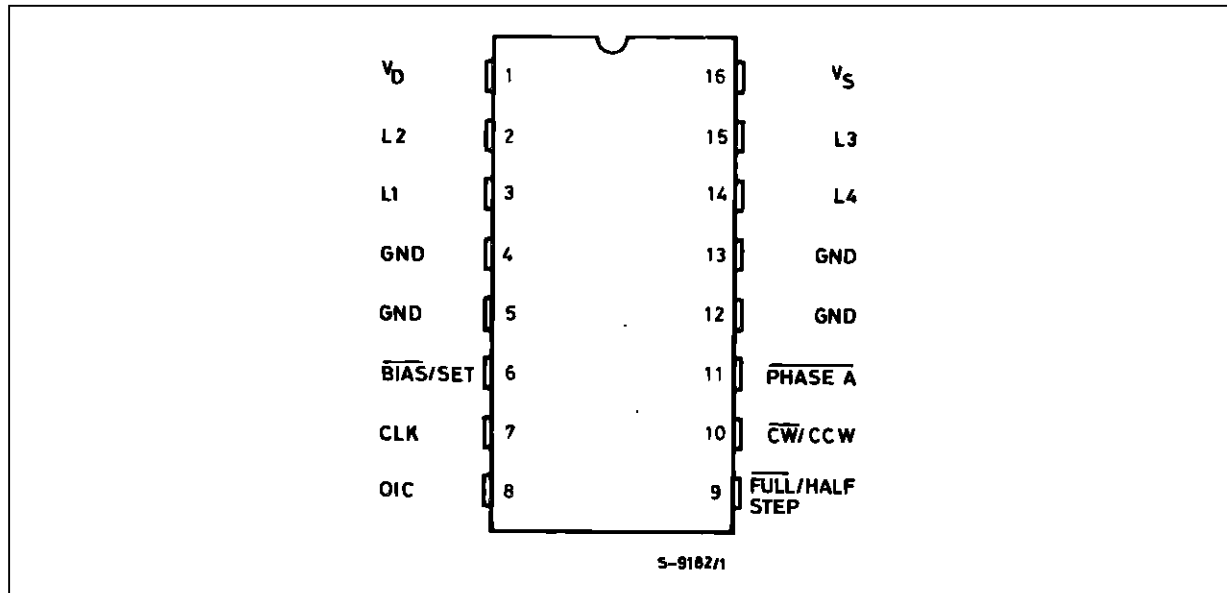
DESCRIPTION

The MC3479C is designed to drive a two-phase stepper motor in the bipolar mode. The circuit consists of four input selections a logic decoding/sequencing section two driver stages for the motor coils and an output to indicate the Phase A drive state.

INPUT TRUTH TABLE

	INPUT LOW	INPUT HIGH
$\overline{CW/CCW}$	CW	CCW
$\overline{F/HS}$	Full Step	Half Step
OIC	High Z	Low Z
CLK	Positive Edge Triggered	

PIN CONNECTION

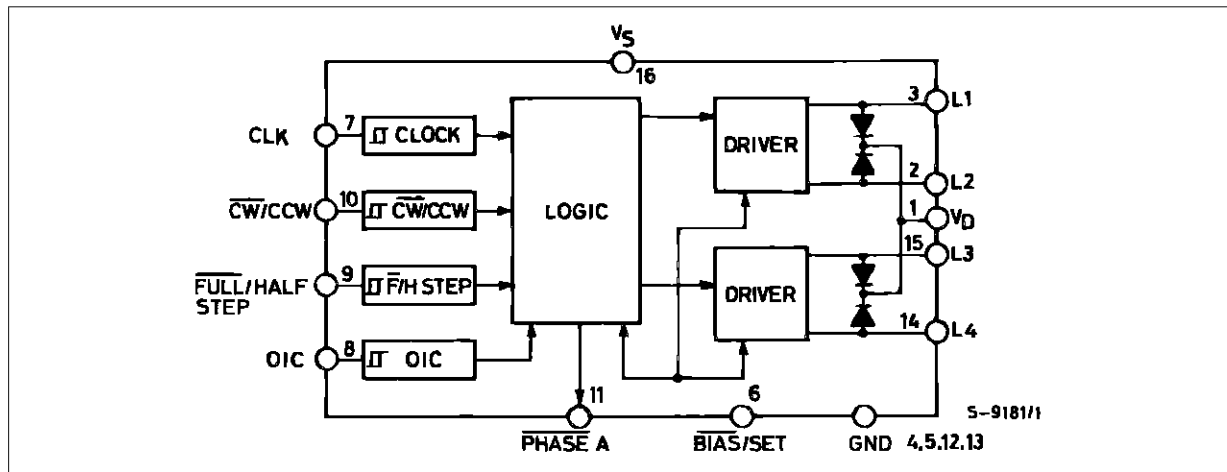


MC3479C

PIN DESCRIPTION

Symbol	Name	Pins	Description
V _S	Power Supply	16	Power Supply pin for both the logic circuit and the motor coil current. Voltage range is 7.2V to 16V.
GND	Ground	4-5-12-13	Ground pins for the logic circuit and the motor coil current. The physical configuration of the pins dissipating heat from within the package.
V _D	Clamp Diode	1	This pin is used to protect the outputs where large voltage spikes may occur as the motor coils are switched. Typically a diode is connected between this pin and Pin 16 (see Figure 5).
L1, L2 L3, L4	Driver Outputs	2-3 14-15	High current outputs FOR the motor coils. L1 and L2 are connected to one coil and L3, L4 to the other coil.
$\overline{B/S}$	Bias/Set	6	This pins is typically 0.7V below V _S . The current out of this pin (through a resistor to ground) determines the maximum output sink current. If the pin is opened (I _{BB} < 5.0mA) the outputs assume a high impedance condition while the internal logic presets to a Phase A condition.
CK	Clock	7	The positive edge of the clock input switches the outputs to the next position. This input has no effect if Pin 6 is open.
$\overline{F/HS}$	Full/Half Step	9	When low (logic 0) each clock pulse will cause the motor to rotate one full step. When high, each clock pulse will cause the motor to rotate one-half step (see Figure 4 for sequence).
$\overline{CW/CCW}$	Clockwise/Counter Clockwise	10	This input allows reversing the rotation of the rotation of the motor (see Figure 4 for sequence).
OIC	Out Impedance Control	8	This input is relevant only in the half step mode (Pin 9 > 2V). When low (logic 0) the two driver out of the non-energized coil will be in a high impedance condition. When high the same driver outputs will be at a low impedance reference to V _S (see Figure 4).
Ph A	Phase A	11	This outputs indicate (when low) that the driver outputs are in the phase A condition (L1 = L3 = V _{OHD} ; L2 = L4 = V _{OLD}).

BLOCK DIAGRAM



ABSOLUTE MAXIMUM RATINGS

Symbol	Parameter	Value	Unit
V_S	Supply Voltage	16	V_{DC}
V_D	Clamp Diode Cathode Voltage (pin 1)	V_S	V_{DC}
V_{OD}	Driver Output Voltage (pins 2, 3, 14, 15)	V_S	V_{DC}
I_{OD-}	Driver Output Current/Coil	± 500	mA
V_{IN}	Input Voltage (pins 7, 8, 9, 10)	- 0.5 to 7	V_{DC}
I_{BS}	Bias/Set Current (pin 6)	10	mA
V_{OA}	Phase A Output Voltage (pin 11)	16	V_{DC}
I_{OA}	Phase A Sink Current (pin 11)	20	mA
T_j	Junction Temperature	150	$^{\circ}C$
T_{stg}	Storage Temperature range	- 55 to 150	$^{\circ}C$

RECOMMENDED OPERATION CONDITIONS

Symbol	Parameter	Min.	Max.	Unit
V_S	Supply Voltage (DC)	7.2	16	V
V_D	Clamp Diode Cathode Voltage (DC)	-	V_S	V
I_{OD}	Driver Output Current (per coil)	-	350	mA
V_I	DC Input Voltage (pin 7, 8, 9, 10)	0	5.5	V
I_{BS}	Bias/Set Current (outputs active)	- 300	75	μA
I_{OA}	Phase A Sink Current	0	8	mA
T_{amb}	Operating Ambient Temperature	0	70	$^{\circ}C$

THERMAL DATA

Symbol	Parameter	Value	Unit
$R_{th\ j-amb}$	Thermal Resistance Junction-ambient	Max. 70	$^{\circ}C/W$

DC ELECTRICAL CHARACTERISTICS (Specifications apply over the recommended supply voltage and temperature range, unless otherwise noted)

Symbol	Parameter	Test Conditions	Min.	Typ.	Max.	Unit
INPUT LOGIC LEVEL						
V_{TLH}	Threshold Voltage (low to high)				2	V
V_{THL}	Threshold Voltage (high to low)		0.8			V
V_{HYS}	Hysteresis		0.4			V
I_{IL} I_{IH1} I_{IH2}	Current	$V_I = 0.4\ V$ $V_I = 5.5\ V$ $V_I = 2.7\ V$	- 100		100 20	μA μA μA

DRIVER OUTPUT LEVELS

V_{OHD}	Output High Voltage	$I_{BS} = - 300\ \mu A$ $I_{OD} = - 350\ mA$ $I_{OD} = - 0.1\ mA$	$V_S - 2.0$ $V_S - 1.2$			V
V_{OLD}	Output Low Voltage	$I_{BS} = - 300\ \mu A, I_{OD} = - 350\ mA$			0.8	V
D_{VOD}	Difference Mode Out Voltage Difference	$I_{BS} = - 300\ \mu A, I_{OD} = - 350\ mA$			0.15	V
C_{VOD}	Common Mode Out Voltage Difference	$I_{BS} = - 300\ \mu A, I_{OD} = - 0.1\ mA$			0.15	V
I_{OZ1}	Out Leakage-HiZ State	$0 < V_D < V_M, I_{BS} = 5\ \mu A$	- 100		+ 100	μA
I_{OZ2}	Out Leakage-HiZ State	$0 < V_{OD} < V_M, I_{BS} = - 300\ \mu A$ Pin 9 = 2V, Pin 8 = 0.8V	- 100		+ 100	μA

MC3479C

DC ELECTRICAL CHARACTERISTICS (Specifications apply over the recommended supply voltage and temperature range, unless otherwise noted) (continued)

Symbol	Parameter	Test Conditions	Min.	Typ.	Max.	Unit
V_{DF}	Forward Voltage	$I_D = 350 \text{ mA}$		2.5	3	V
I_{DR}	Leakage Current	$V_R = 21 \text{ V}$			100	μA

CLAMP DIODES

V_{OLA}	Out Low Voltage	$I_{OA} = 8 \text{ mA}$			0.4	V
	Off State Leakage Current	$V_{OA} = 16.5 \text{ V}$			100	μA

POWER SUPPLY

I_{SSB}	Power Supply Current in Stand by State	$V_{BS} = V_S$			12	mA
I_S	Power Supply Current ($I_{OD} = 0, I_{BS} = -300\mu\text{A}$)	$L1 = V_{OHD}, L2 = V_{OLD}$ $L3 = V_{OHD}, L4 = V_{OHD}$			75	mA

BIAS SET CURRENT

I_{BS}	Bias Set Current	to set $\overline{\text{PHASE A}}$	- 5			μA
----------	------------------	------------------------------------	-----	--	--	---------------

- Notes :**
- $DVOD = |VOD1.2 - VOD3.4|$
 $VOD1.2 = (VOHD1 - VOHD2) \text{ or } (VOHD2 - VOLD1) \text{ AND}$ $VOD3.4 = (VOHD3 - VOHD4) \text{ OR } (VOHD4 - VOHD3)$
 - $CVOD = |VOHD1 - VOHD2 \text{ or } VOHD3 - VOHD4|$

AC SWITCHING CHARACTERISTICS ($T_{amb} = 25^\circ\text{C}, V_M = 12 \text{ V}$)

Symbol	Parameter	Test Conditions	Min.	Typ.	Max.	Unit
f_{CK}	Clock Frequency		0		30	kHz
PWCKH	Clock Pulse Width	HIGH	10			μs
PWCKL	Clock Pulse Width	LOW	20			μs
t_{SU}	Set-up Time $\overline{\text{CW/CCW}}$ and $\overline{\text{F/HS}}$		5			μs
t_{HO}	Hold Time $\overline{\text{CW/CCW}}$ and $\overline{\text{F/HS}}$		10			μs
t_{PCD}	Propagation Delay $\overline{\text{CLK}}$ -to Driver Out			8		μs
t_{PBSD}	Propagation Delay $\overline{\text{Bias/Set}}$ to Driver Output			1		μs
t_{PHLA}	Propagation Delay $\overline{\text{CLK}}$ -to Phase A LOW			12		μs
t_{PLHA}	Propagation Delay $\overline{\text{CLK}}$ -to Phase A HIGH			5		μs

Figure 1 : AC Test Circuit

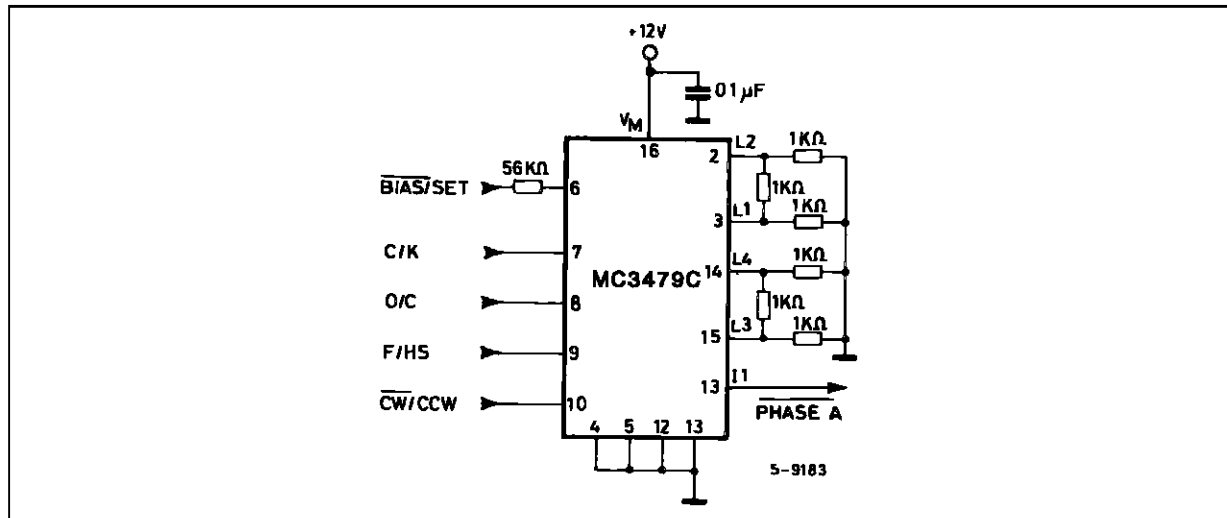


Figure 2 : Typical Application Circuit.

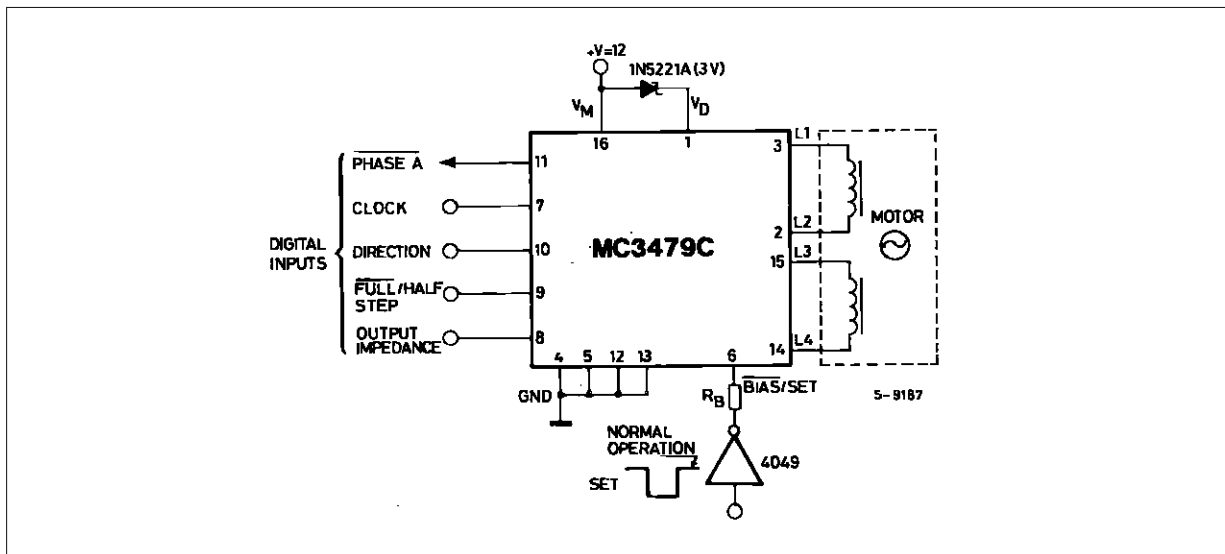


Figure 3 : Bias/Set Timing (refer to fig.1).

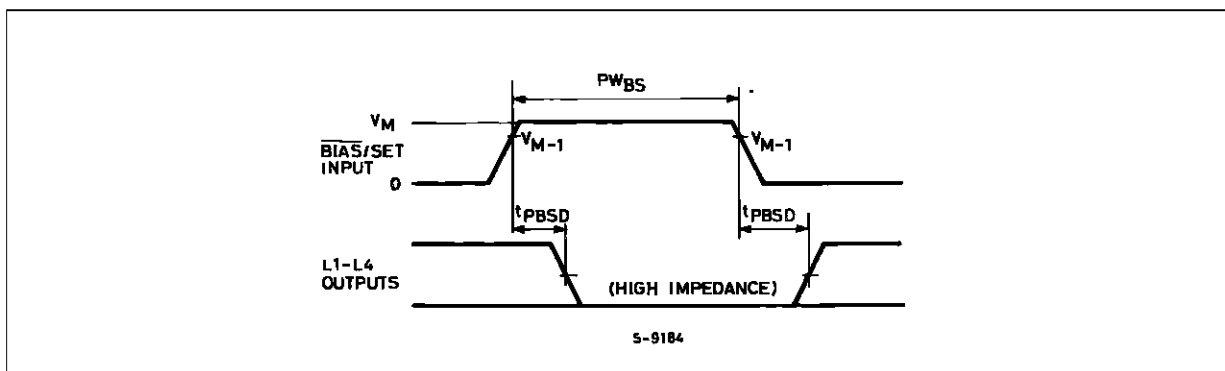


Figure 4 : Clock Timing (refer to fig.1).

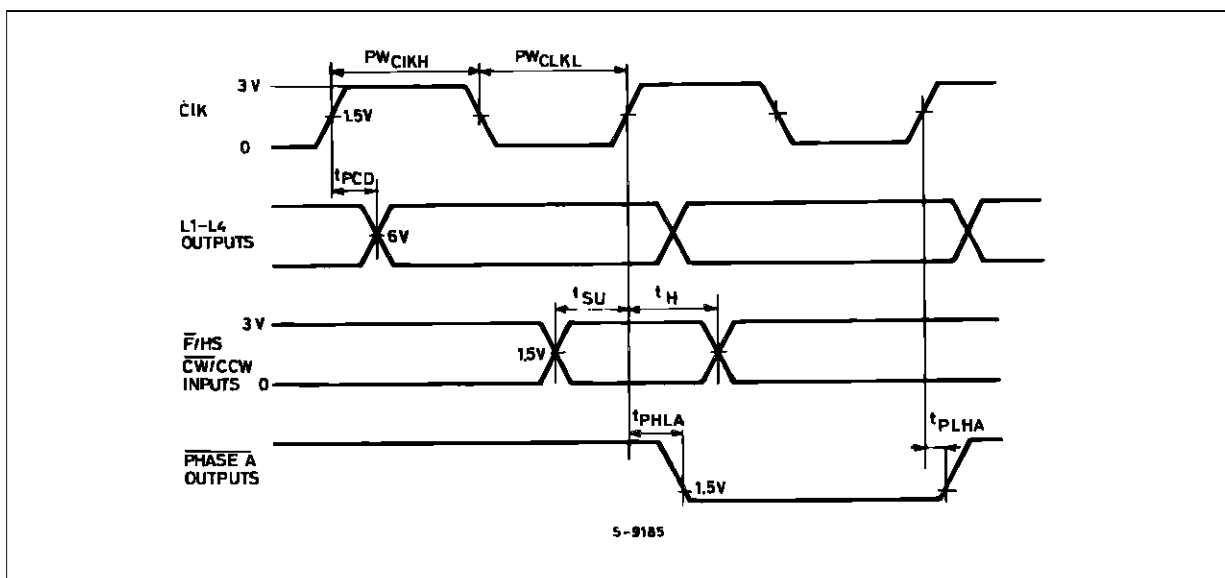
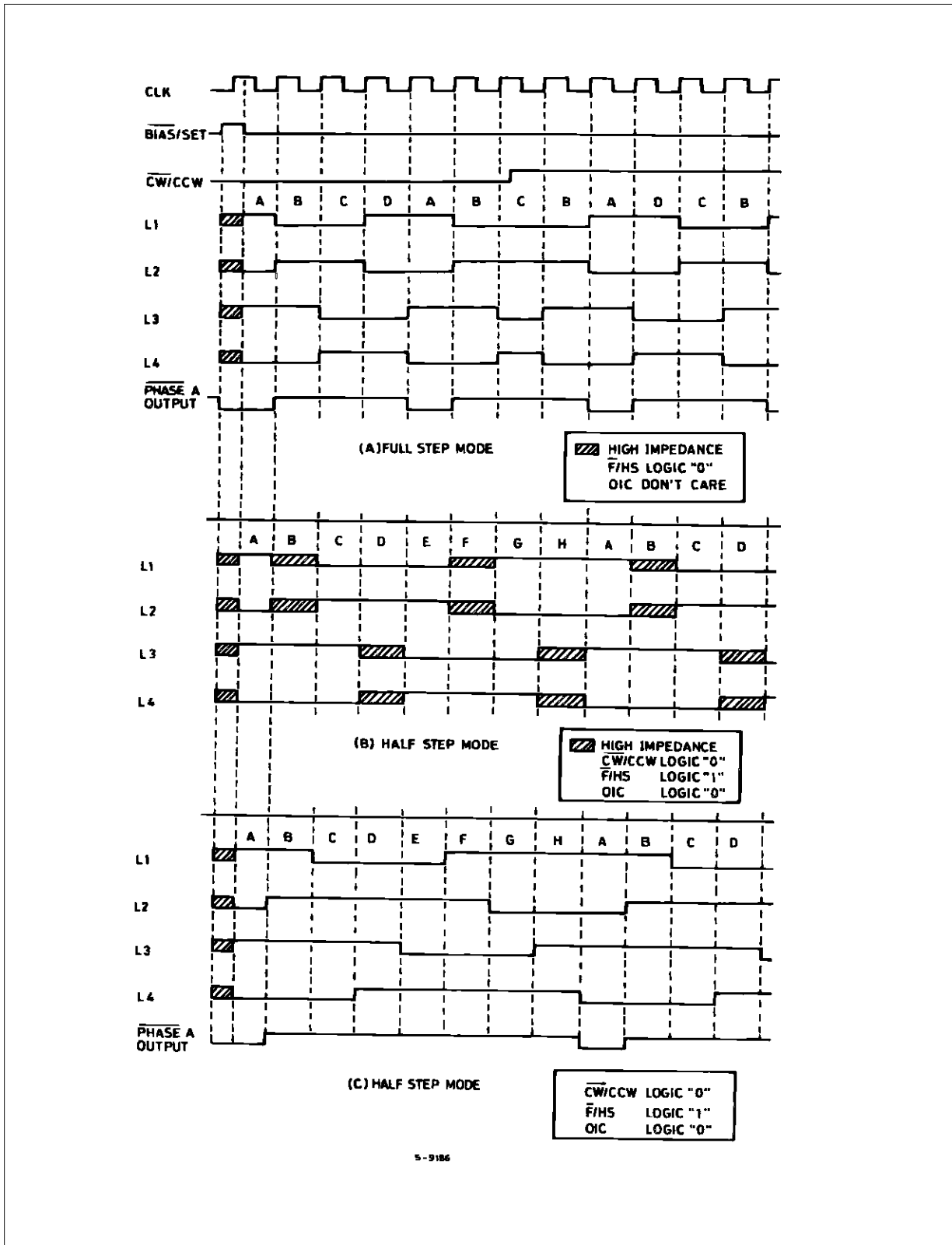
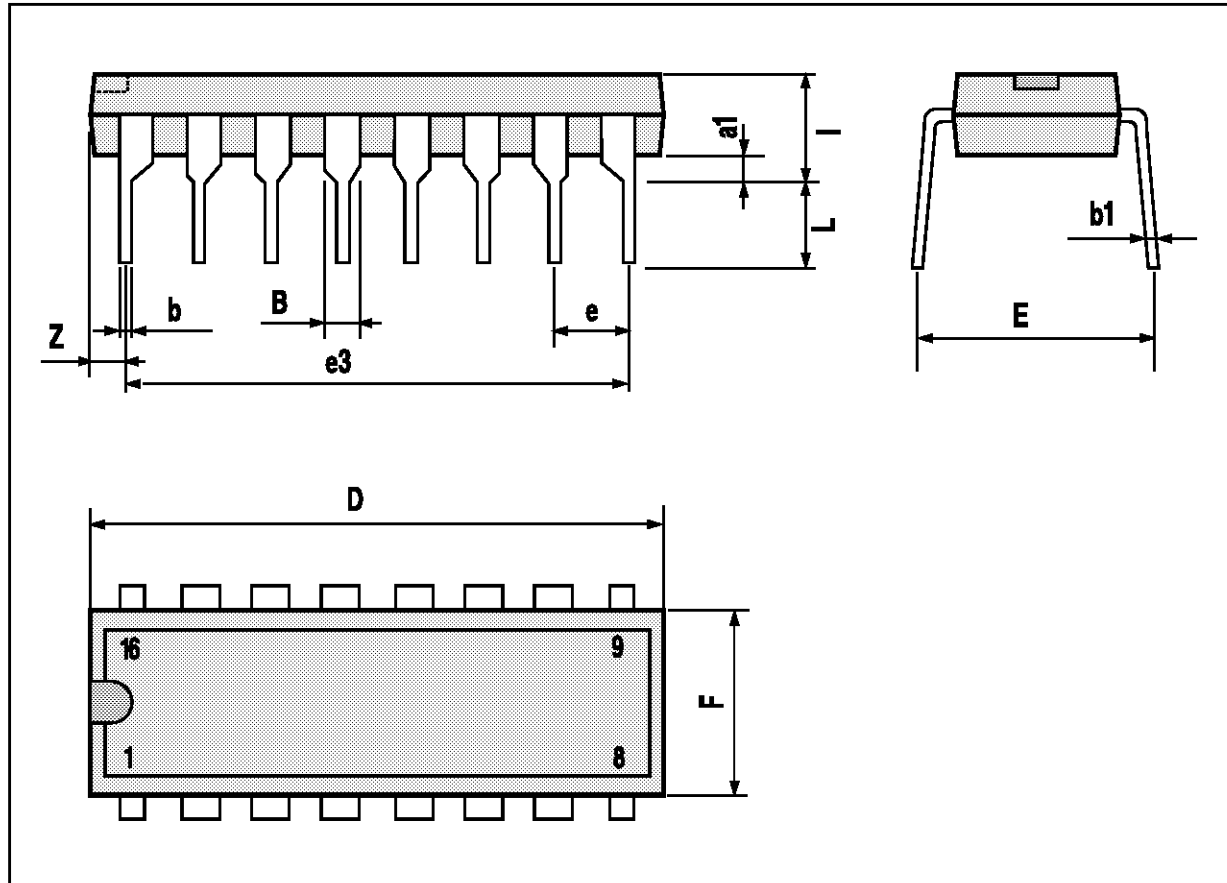


Figure 5 : Output Sequence.



POWERDIP16 PACKAGE MECHANICAL DATA

DIM.	mm			inch		
	MIN.	TYP.	MAX.	MIN.	TYP.	MAX.
a1	0.51			0.020		
B	0.85		1.40	0.033		0.055
b		0.50			0.020	
b1	0.38		0.50	0.015		0.020
D			20.0			0.787
E		8.80			0.346	
e		2.54			0.100	
e3		17.78			0.700	
F			7.10			0.280
I			5.10			0.201
L		3.30			0.130	
Z			1.27			0.050



Information furnished is believed to be accurate and reliable. However, SGS-THOMSON Microelectronics assumes no responsibility for the consequences of use of such information nor for any infringement of patents or other rights of third parties which may result from its use. No license is granted by implication or otherwise under any patent or patent rights of SGS-THOMSON Microelectronics. Specifications mentioned in this publication are subject to change without notice. This publication supersedes and replaces all information previously supplied. SGS-THOMSON Microelectronics products are not authorized for use as critical components in life support devices or systems without express written approval of SGS-THOMSON Microelectronics.

© 1994 SGS-THOMSON Microelectronics - All Rights Reserved

SGS-THOMSON Microelectronics GROUP OF COMPANIES
Australia - Brazil - France - Germany - Hong Kong - Italy - Japan - Korea - Malaysia - Malta - Morocco - The Netherlands - Singapore -
Spain - Sweden - Switzerland - Taiwan - Thailand - United Kingdom - U.S.A.