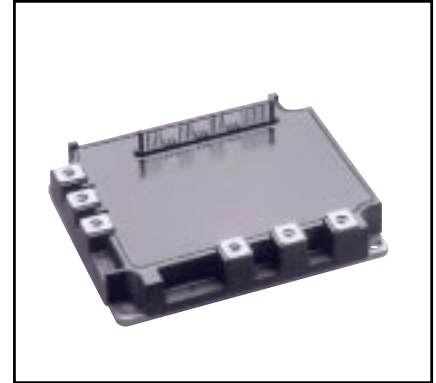
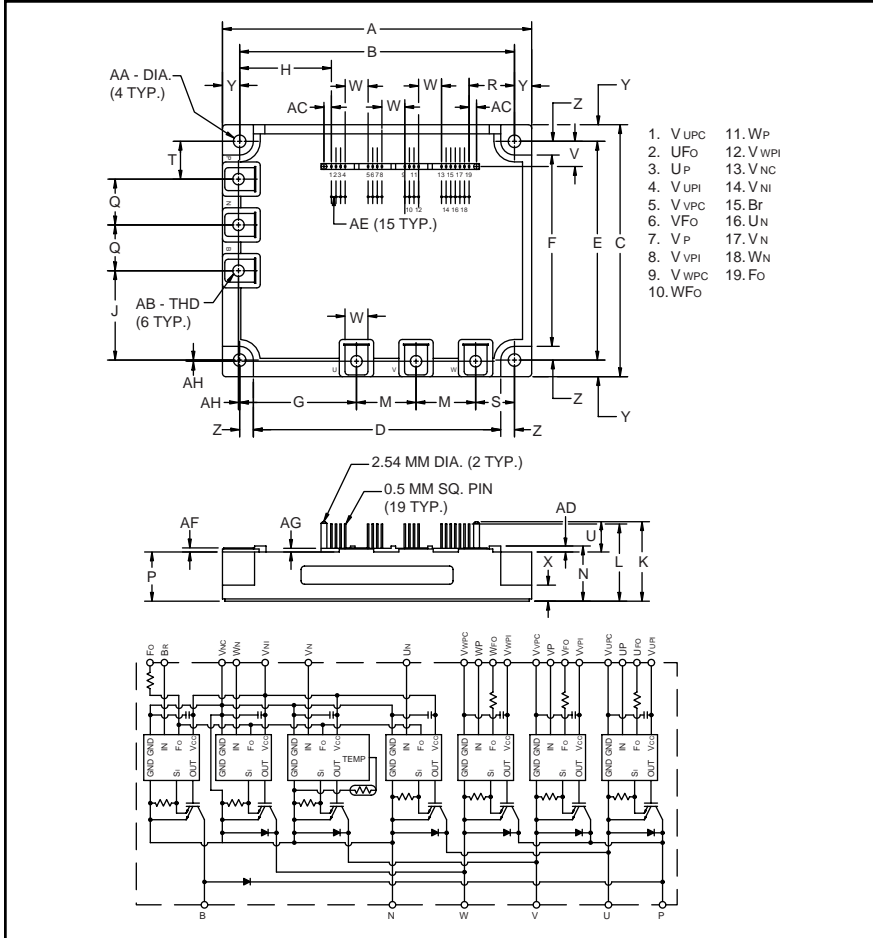


Intellimod™ Module Three Phase + Brake IGBT Inverter Output 100 Amperes/1200 Volts



Description:

Powerex Intellimod™ Intelligent Power Modules are isolated base modules designed for power switching applications operating at frequencies to 20kHz. Built-in control circuits provide optimum gate drive and protection for the IGBT and free-wheel diode power devices.

Features:

- Complete Output Power Circuit
- Gate Drive Circuit
- Protection Logic
 - Short Circuit
 - Over Current
 - Over Temperature
 - Under Voltage
- Low Loss Using 4th Generation IGBT Chip

Applications:

- Inverters
- UPS
- Motion/Servo Control
- Power Supplies

Ordering Information:

Example: Select the complete part number from the table below -i.e. PM100RSD120 is a 1200V, 100 Ampere Intellimod™ Intelligent Power Module.

Outline Drawing and Circuit Diagram

Dimensions	Inches	Millimeters
A	5.31±0.04	135.0±1.0
B	4.74±0.02	120.5±0.5
C	4.33±0.04	110.0±1.0
D	4.27	108.5
E	3.76±0.02	95.5±0.5
F	3.29	83.5
G	2.01	51.0
H	1.602	40.68
J	1.54	39.0
K	1.37	34.7
L	1.33	33.7
M	1.02	26.0
N	0.95 +0.06/-0.0	24.1 +1.5/-0.0
P	0.85	21.5
Q	0.79	20.0
R	0.780	19.82

Dimensions	Inches	Millimeters
S	0.69	17.5
T	0.65	16.5
U	0.52	13.2
V	0.43	11.0
W	0.41	10.5
X	0.16	4.0
Y	0.285	7.25
Z	0.24	6.0
AA	0.22 Dia.	Dia. 5.5
AB	Metric M5	M5
AC	0.128	3.22
AD	0.10	2.6
AE	0.08	2.0
AF	0.07	1.8
AG	0.06	1.6
AH	0.02	0.5

Type	Current Rating Amperes	V _{CES} Volts (x 10)
PM	100	120

PM100RSD120
Intellimod™ Module
Three Phase + Brake IGBT Inverter Output
 100 Amperes/1200 Volts

Absolute Maximum Ratings, $T_j = 25^\circ\text{C}$ unless otherwise specified

Characteristics	Symbol	PM100RSD120	Units
Power Device Junction Temperature	T_j	-20 to 150	$^\circ\text{C}$
Storage Temperature	T_{stg}	-40 to 125	$^\circ\text{C}$
Case Operating Temperature*	T_C	-20 to 100	$^\circ\text{C}$
Mounting Torque, M5 Mounting Screws	—	31	in-lb
Mounting Torque, M5 Main Terminal Screws	—	31	in-lb
Module Weight (Typical)	—	920	Grams
Supply Voltage Protected by OC and SC ($V_D = 13.5 - 16.5\text{V}$, Inverter Part) $T_j = 125^\circ\text{C}$ Start	$V_{\text{CC(prot.)}}$	800	Volts
Isolation Voltage, AC 1 minute, 60Hz Sinusoidal	V_{ISO}	2500	Volts

IGBT Inverter Sector

Collector-Emitter Voltage ($V_D = 15\text{V}$, $V_{\text{CIN}} = 15\text{V}$)	V_{CES}	1200	Volts
Collector Current, \pm ($T_C = 25^\circ\text{C}$)	I_C	100	Amperes
Peak Collector Current, \pm ($T_C = 25^\circ\text{C}$)	I_{CP}	200	Amperes
Supply Voltage (Applied between P - N)	V_{CC}	800	Volts
Supply Voltage, Surge (Applied between P - N)	$V_{\text{CC(surge)}}$	1000	Volts
Collector Dissipation ($T_C = 25^\circ\text{C}$)	P_C	595	Watts

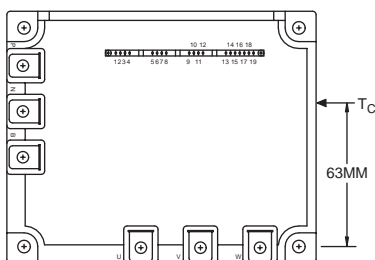
IGBT Brake Sector

Collector-Emitter Voltage ($V_D = 15\text{V}$, $V_{\text{CIN}} = 15\text{V}$)	V_{CES}	1200	Volts
Collector Current, \pm ($T_C = 25^\circ\text{C}$)	I_C	50	Amperes
Peak Collector Current, \pm ($T_C = 25^\circ\text{C}$)	I_{CP}	100	Amperes
FWDi Rated DC Reverse Voltage ($T_C = 25^\circ\text{C}$)	$V_{\text{R(DC)}}$	1200	Volts
FWDi Forward Current ($T_C = 25^\circ\text{C}$)	I_F	50	Amperes
Collector Dissipation ($T_C = 25^\circ\text{C}$)	P_C	416	Watts

Control Sector

Supply Voltage Applied between ($V_{\text{UP1}}-V_{\text{UPC}}$, $V_{\text{VP1}}-V_{\text{VPC}}$, $V_{\text{WP1}}-V_{\text{WPC}}$, $V_{\text{N1}}-V_{\text{NC}}$)	V_D	20	Volts
Input Voltage Applied between (U_P-V_{UPC} , V_P-V_{VPC} , W_P-V_{WPC} , U_N , V_N , W_N , B_r-V_{NC})	V_{CIN}	20	Volts
Fault Output Supply Voltage Applied between ($U_{\text{FO}}-V_{\text{UPC}}$, $V_{\text{FO}}-V_{\text{VPC}}$, $W_{\text{FO}}-V_{\text{WPC}}$, F_O-V_{NC})	V_{FO}	20	Volts
Fault Output Current (U_{FO} , V_{FO} , W_{FO} , F_O)	I_{FO}	20	mA

* T_C Measure Point



PM100RSD120
Intellimod™ Module
Three Phase + Brake IGBT Inverter Output
100 Amperes/1200 Volts

Electrical and Mechanical Characteristics, $T_j = 25^\circ\text{C}$ unless otherwise specified

Characteristics	Symbol	Test Conditions	Min.	Typ.	Max.	Units
IGBT Inverter Sector						
Collector Cutoff Current	I_{CES}	$V_{CE} = V_{CES}, T_j = 25^\circ\text{C}, V_D = 15\text{V}$	—	—	1.0	mA
		$V_{CE} = V_{CES}, T_j = 125^\circ\text{C}, V_D = 15\text{V}$	—	—	10	mA
Diode Forward Voltage	V_{EC}	$-I_C = 100\text{A}, V_D = 15\text{V}, V_{CIN} = 15\text{V}$	—	2.5	3.5	Volts
Collector-Emitter Saturation Voltage	$V_{CE(sat)}$	$V_D = 15\text{V}, V_{CIN} = 0\text{V}, I_C = 100\text{A},$ Pulsed, $T_j = 25^\circ\text{C}$	—	2.4	3.2	Volts
		$V_D = 15\text{V}, V_{CIN} = 0\text{V}, I_C = 100\text{A},$ Pulsed, $T_j = 125^\circ\text{C}$	—	2.1	2.8	Volts
Inductive Load Switching Times	t_{on}		0.5	1.0	2.5	μS
	t_{rr}	$V_D = 15\text{V}, V_{CIN} = 0 \sim 15\text{V}$	—	0.15	0.3	μS
	$t_{C(on)}$	$V_{CC} = 600\text{V}, I_C = 100\text{A}$	—	0.4	1.0	μS
	t_{off}	$T_j = 125^\circ\text{C}, \text{Inductive Load}$	—	2.5	3.5	μS
	$t_{C(off)}$		—	0.7	1.2	μS
IGBT Brake Sector						
Collector Cutoff Current	I_{CES}	$V_{CE} = V_{CES}, T_j = 25^\circ\text{C}, V_D = 15\text{V}$	—	—	1.0	mA
		$V_{CE} = V_{CES}, T_j = 125^\circ\text{C}, V_D = 15\text{V}$	—	—	10	mA
FWDi Forward Voltage	V_{FM}	$I_F = 50\text{A}$	—	2.5	3.5	Volts
Collector-Emitter Saturation Voltage	$V_{CE(sat)}$	$V_D = 15\text{V}, V_{CIN} = 0\text{V}, I_C = 50\text{A},$ Pulsed, $T_j = 25^\circ\text{C}$	—	2.65	3.30	Volts
		$V_D = 15\text{V}, V_{CIN} = 0\text{V}, I_C = 50\text{A},$ Pulsed, $T_j = 125^\circ\text{C}$	—	2.60	3.25	Volts
Control Sector						
Over Current Trip Level Inverter Part ($V_D = 15\text{V}$)	OC	$T_j = 25^\circ\text{C}$	228	345	—	Amperes
		$T_j = 125^\circ\text{C}$	145	—	—	Amperes
Over Current Trip Level Brake Part	OC	$-20^\circ\text{C} \leq T_j \leq 125^\circ\text{C}, V_D = 15\text{V}$	75	—	—	Amperes
Short Circuit Trip Level Inverter Part	SC	$-20^\circ\text{C} \leq T_j \leq 125^\circ\text{C}, V_D = 15\text{V}$	—	340	—	Amperes
Short Circuit Trip Level Brake Part			—	144	—	Amperes
Over Current Delay Time	$t_{off(OC)}$	$V_D = 15\text{V}$	—	10	—	μS
Over Temperature Protection ($V_D = 15\text{V}$) (Lower Arm)	OT	Trip Level	111	118	125	$^\circ\text{C}$
	OT_R	Reset Level	—	100	—	$^\circ\text{C}$
Supply Circuit Under Voltage Protection ($-20 \leq T_j \leq 125^\circ\text{C}$)	UV	Trip Level	11.5	12.0	12.5	Volts
	UV_R	Reset Level	—	12.5	—	Volts
Circuit Current	I_D	$V_D = 15\text{V}, V_{CIN} = 15\text{V}, V_{N1}-V_{NC}$	—	60	82	mA
		$V_D = 15\text{V}, V_{CIN} = 15\text{V}, V_{XP1}-V_{XPC}$	—	15	20	mA
Input ON Threshold Voltage	$V_{CIN(on)}$	Applied between $U_P-V_{UPC}, V_P-V_{VPC},$	1.2	1.5	1.8	Volts
Input OFF Threshold Voltage	$V_{CIN(off)}$	$W_P-V_{WPC}, U_N, V_N, W_N, B_r-V_{NC}$	1.7	2.0	2.3	Volts
Fault Output Current*	$I_{FO(H)}$	$V_D = 15\text{V}, V_{CIN} = 15\text{V}$	—	—	0.01	mA
	$I_{FO(L)}$	$V_D = 15\text{V}, V_{CIN} = 15\text{V}$	—	10	15	mA
Minimum Fault Output Pulse Width*	t_{FO}	$V_D = 15\text{V}$	1.0	1.8	—	mS

*Fault output is given only when the internal OC, SC, OT and UV protections schemes of either upper or lower arm device operate to protect it.



Powerex, Inc., 200 Hillis Street, Youngwood, Pennsylvania 15697-1800 (724) 925-7272

PM100RSD120
Intellimod™ Module
Three Phase + Brake IGBT Inverter Output
100 Amperes/1200 Volts

Thermal Characteristics

Characteristic	Symbol	Condition	Min.	Typ.	Max.	Units
Junction to Case Thermal Resistance	$R_{th(j-c)Q}$	Each IGBT	—	—	0.21	°C/Watt
Inverter Part	$R_{th(j-c)F}$	Each FWDi	—	—	0.35	°C/Watt
	$R_{th(j-c')Q}$	Each IGBT*	—	—	0.13**	°C/Watt
	$R_{th(j-c')F}$	Each FWDi*	—	—	0.21**	°C/Watt
	Junction to Case Thermal Resistance	$R_{th(j-c)Q}$	Each IGBT	—	—	0.30
Brake Part	$R_{th(j-c)F}$	Each FWDi	—	—	0.80	°C/Watt
	$R_{th(j-c')Q}$	Each IGBT*	—	—	0.22**	°C/Watt
	$R_{th(j-c')F}$	Each FWDi*	—	—	0.36**	°C/Watt
	Contact Thermal Resistance	$R_{th(c-f)}$	Case to Fin Per Module, Thermal Grease Applied	—	—	0.018

* T_C measured point is just under the chips.

**If you use this value, $R_{th(f-a)}$ should be measured just under the chips.

Recommended Conditions for Use

Characteristic	Symbol	Condition	Value	Units
Supply Voltage	V_{CC}	Applied across P-N Terminals	0 ~ 800	Volts
Control Supply Voltage***	V_D	Applied between $V_{UP1}-V_{UPC}$, $V_{N1}-V_{NC}$, $V_{VP1}-V_{VPC}$, $V_{WP1}-V_{WPC}$	15 ± 1.5	Volts
Input ON Voltage	$V_{CIN(on)}$	Applied between U_P-V_{UPC} , V_P-V_{VPC} ,	0 ~ 0.8	Volts
Input OFF Voltage	$V_{CIN(off)}$	W_P-V_{WPC} , U_N , V_N , W_N , B_r-V_{NC}	4.0 ~ V_D	Volts
PWM Input Frequency	f_{PWM}	Using Application Circuit	0 ~ 20	kHz
Minimum Dead Time	t_{DEAD}	Input Signal	≥ 3.0	μS

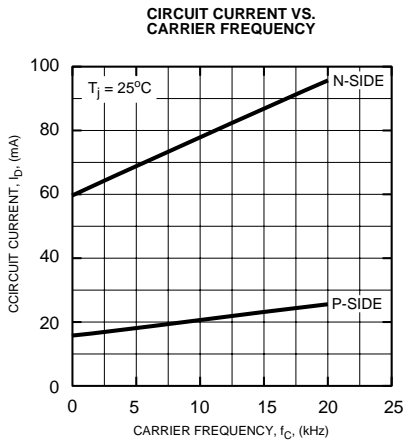
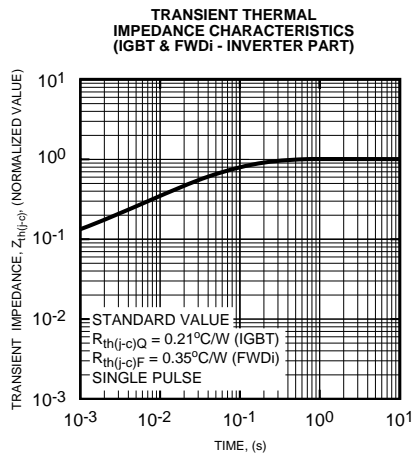
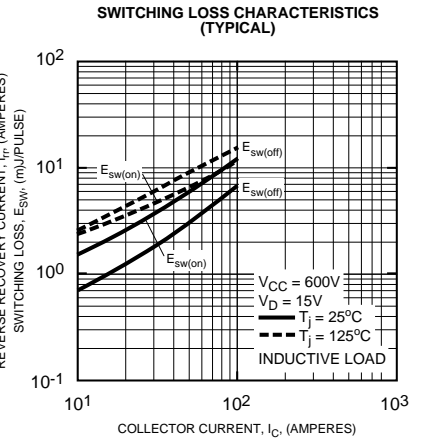
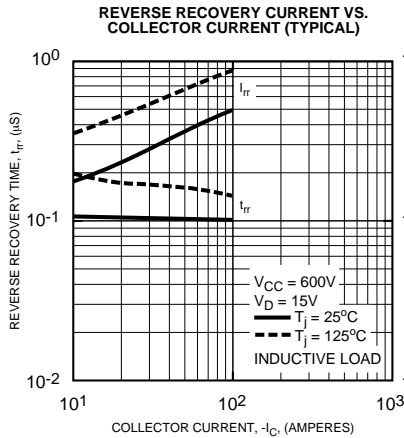
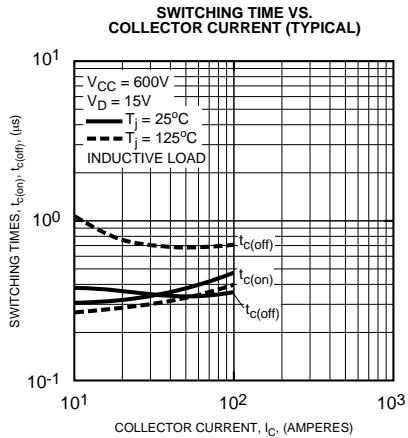
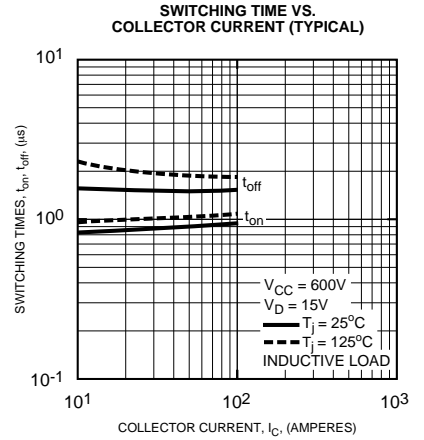
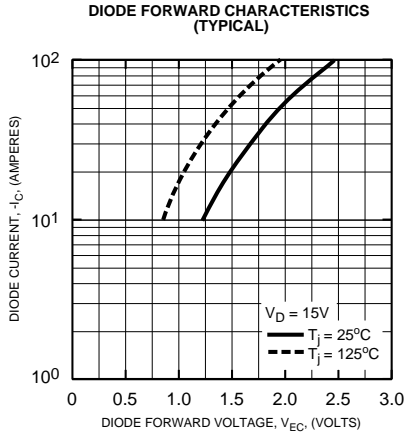
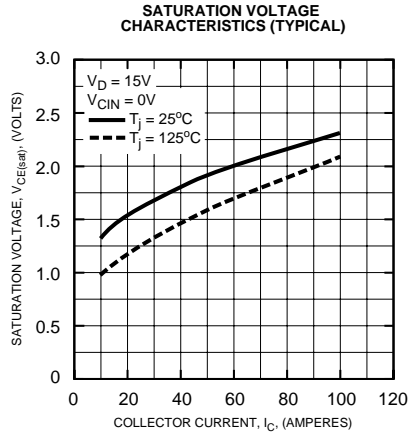
***With ripple satisfying the following conditions: $dv/dt \leq \pm 5v/\mu s$, Variation ≤ 2V peak to peak.



Powerex, Inc., 200 Hillis Street, Youngwood, Pennsylvania 15697-1800 (724) 925-7272

PM100RS120
Intellimod™ Module
Three Phase + Brake IGBT Inverter Output
100 Amperes/1200 Volts

Inverter Part



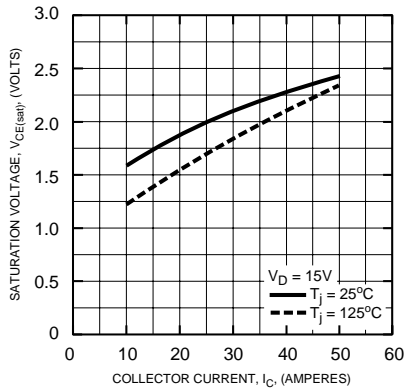


Powerex, Inc., 200 Hillis Street, Youngwood, Pennsylvania 15697-1800 (724) 925-7272

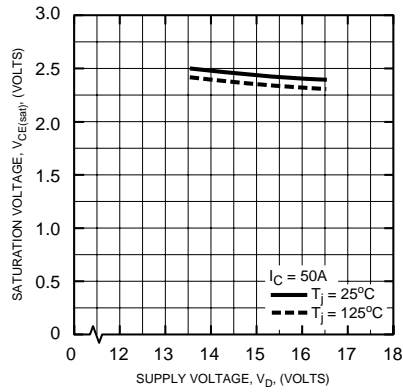
PM100RSD120
Intellimod™ Module
Three Phase + Brake IGBT Inverter Output
100 Amperes/1200 Volts

Brake Part

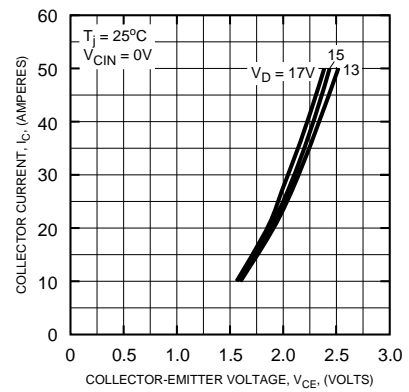
COLLECTOR-EMITTER SATURATION VOLTAGE (TYPICAL)



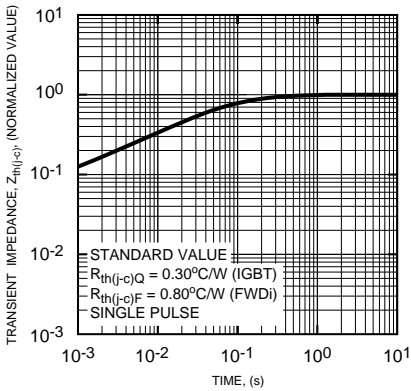
COLLECTOR-EMITTER SATURATION VOLTAGE (TYPICAL)



OUTPUT CHARACTERISTICS (TYPICAL)



TRANSIENT THERMAL IMPEDANCE CHARACTERISTICS (IGBT & FWDi BRAKE PART)



DIODE FORWARD CHARACTERISTICS (TYPICAL)

