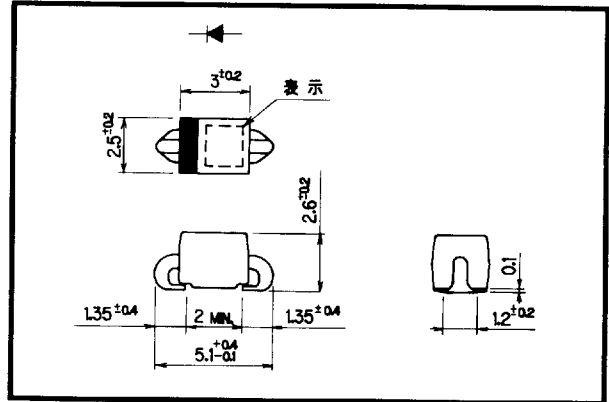


# SC015 (1.0A)

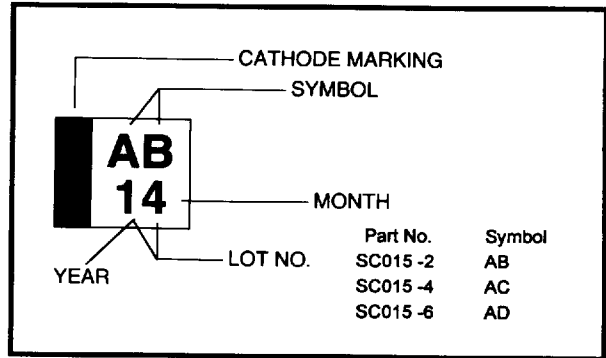


## GENERAL USE RECTIFIER DIODE

## Outline Drawing



## Marking



## Features

- Surface mount device
- High reliability

## Applications

- General purpose rectifier applications

## Maximum Ratings & Characteristics

### Absolute Maximum Ratings

Items	Symbols	Conditions	Ratings			Units
			-2	-4	-6	
Repetative Peak Reverse Voltage	$V_{RRM}$		200	400	600	V
Non-Repetative Peak Reverse Voltage	$V_{RSM}$		200	400	600	V
Average Output Current	$I_O$	$T_a = 40^\circ\text{C}$ , Resistive Load	1.0 *			A
Surge Current	$I_{FSM}$	Sine Wave, 10ms	40			A
Operating Junction Temperature	$T_J$		-40 to +140			$^\circ\text{C}$
Storage Temperature	$T_{stg}$		-40 to +140			$^\circ\text{C}$

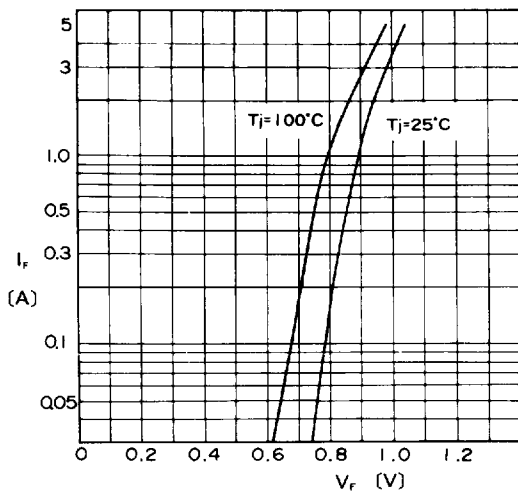
\*Mounted to glass fabric base epoxy resin printed circuits.

### Electrical Characteristics ( $T_a = 25^\circ\text{C}$ Unless otherwise specified)

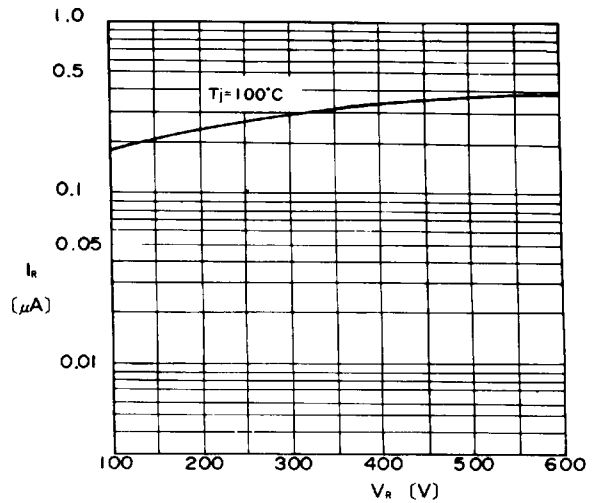
Items	Symbols	Conditions	Ratings	Units
Forward Voltage Drop	$V_F$	$I_F = 2\text{A}$	1.1	V
Reverse Current	$I_R$	$V_R = V_{RRM}$	10	$\mu\text{A}$
Thermal Resistance	$R_{th(j-a)}$	Junction to Ambient	120 *	$^\circ\text{C/W}$



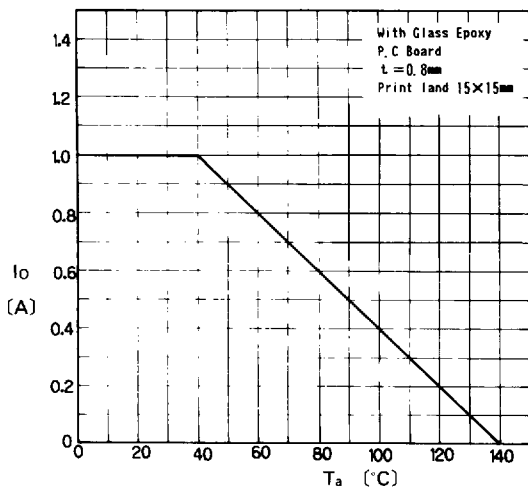
# SC015 (1.0A)



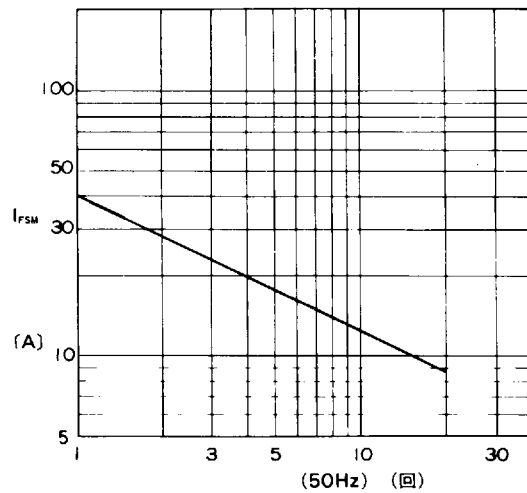
Forward Characteristics



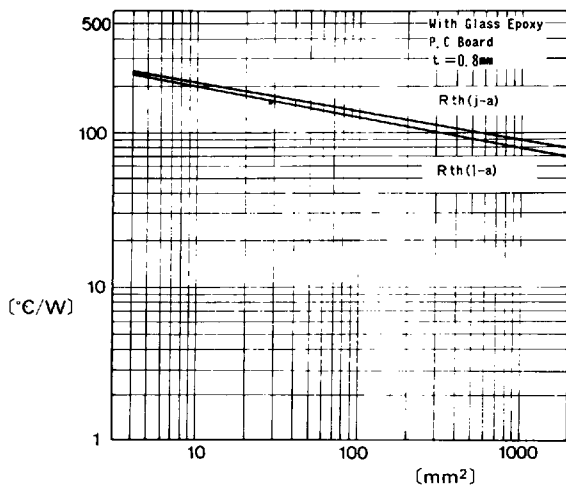
Reverse Characteristics



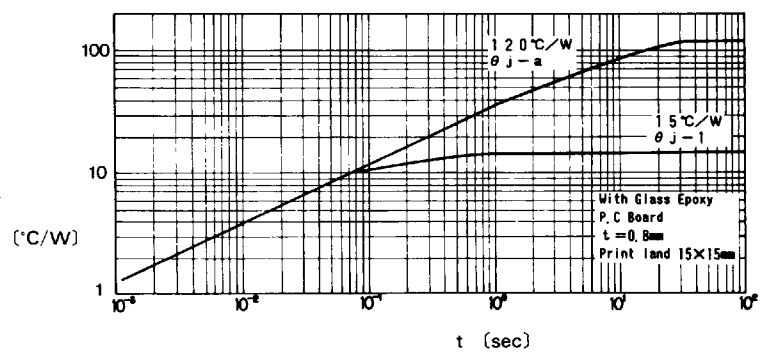
Current Derating ( $I_o$ - $T_a$ )



Surge Capability



Thermal Resistance Print Land



Transient Thermal Impedance