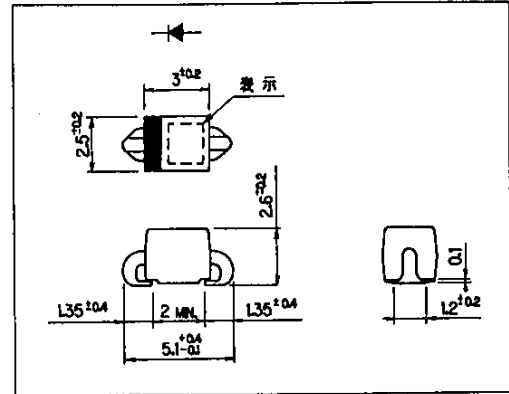


### 高速整流ダイオード

### FAST RECOVERY DIODE

### ■外形寸法：Outline Drawings



A

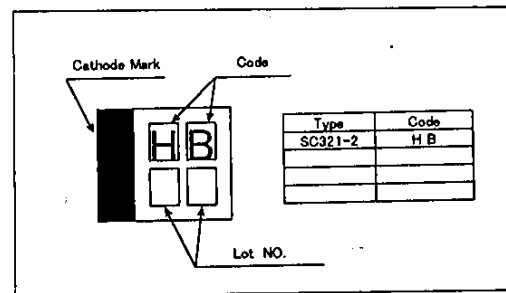
### ■特長：Features

- 表面実装が可能  
Surface mount device
- メサ形のため耐圧が高い  
High voltage by mesa design.
- 高信頼性  
High reliability

### ■用途：Applications

- 高速スイッチング  
High speed switching.

### ■表示：Marking



### ■定格と特性：Maximum Ratings and Characteristics

#### ●絶対最大定格：Absolute Maximum Ratings

Items	Symbols	Conditions	Ratings	Units
ピーク繰り返し逆電圧 Repetitive Peak Reverse Voltage	$V_{RRM}$		200	V
ピーク非繰り返し逆電圧 Non-Repetitive Peak Reverse Voltage	$V_{RSM}$		200	V
平均出力電流 Average Output Current	$I_o$	抵抗負荷 Resistive load $T_a=25^\circ\text{C}$	1.0*	A
サージ電流 Surge Current	$I_{FSM}$	正弦波 Sine wave 10ms	40	A
接合温度 Operating Junction Temperature	$T_j$		-40~+150	$^\circ\text{C}$
保存温度 Storage Temperature	$T_{stg}$		-40~+150	$^\circ\text{C}$

\* ガラスエポキシ基板に装着、ランド寸法15×15mm

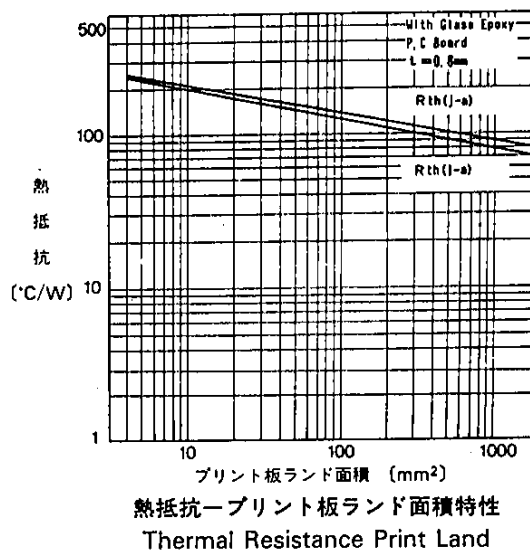
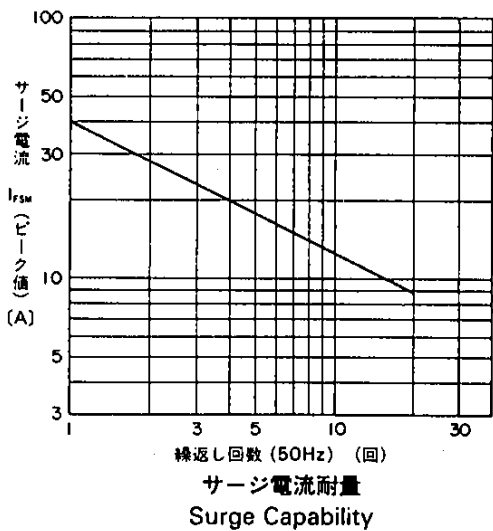
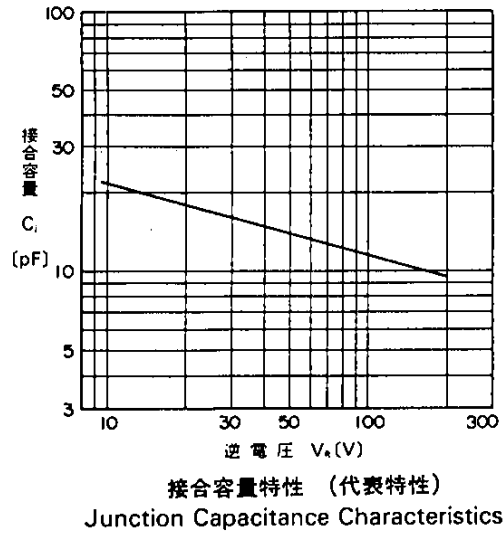
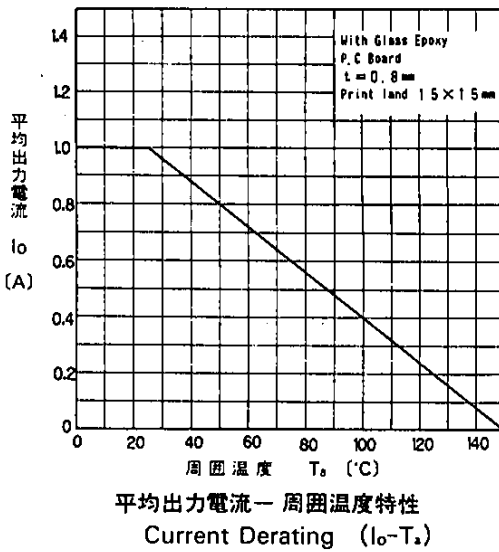
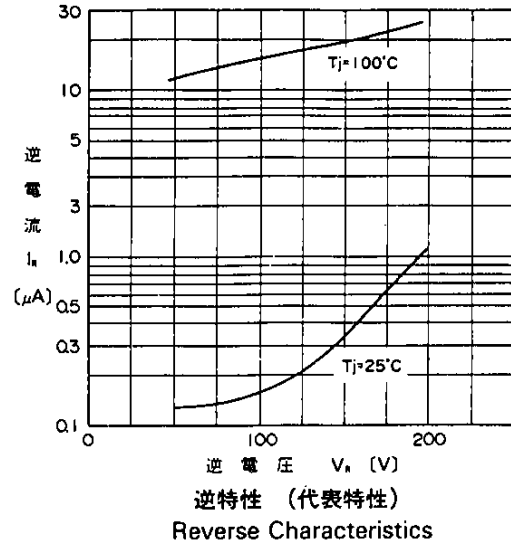
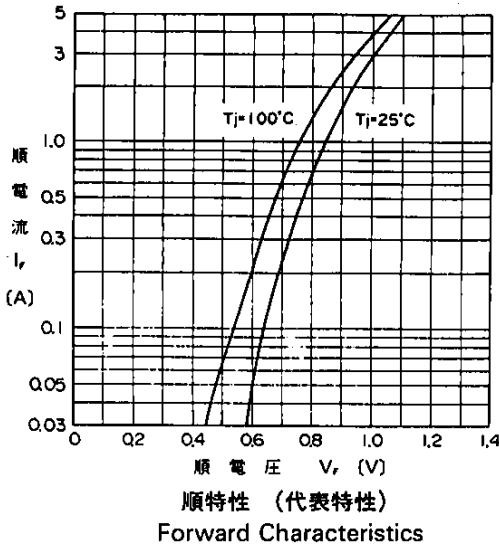
\* Mounted to glass fabric base epoxy resin printed circuits

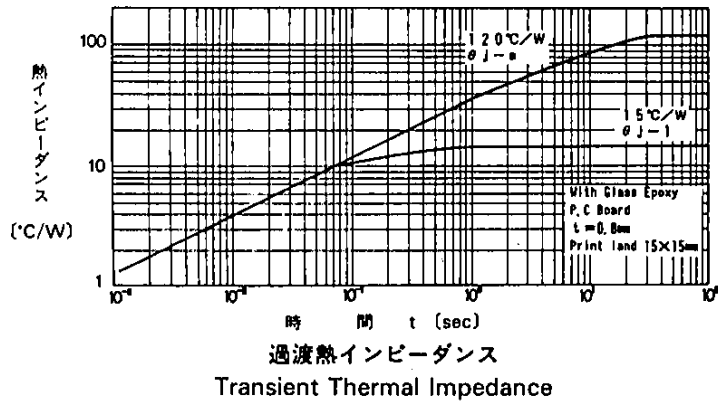
#### ●電気的特性(特に指定がない限り周囲温度 $T_a=25^\circ\text{C}$ とする)

Electrical Characteristics ( $T_a=25^\circ\text{C}$  Unless otherwise specified)

Items	Symbols	Conditions	Max.	Units
順電圧 Forward Voltage Drop	$V_{FM}$	$I_{FM}=1.0\text{A}$	1.05	V
逆電流 Reverse Current	$I_{RRM}$	$V_R=V_{RRM}$	50	$\mu\text{A}$
逆回復時間 Reverse Recovery Time	$t_{rr}$	$I_F=0.1\text{A}, I_R=0.1\text{A},$	100	ns
熱抵抗 Thermal Resistance	$R_{th(j-a)}$	接合・周囲間 junction to ambient	120*	$^\circ\text{C/W}$

■特性曲線 : Characteristics





A