

Unipolar Driver ICs

SLA7022MU SLA7029M

WITH MOSFETs

■ Ratings

Absolute maximum ratings	Motor supply Voltage	FET output breakdown voltage	Control voltage	TTL input voltage	Reference voltage	Output current	Power dissipation	Channel temperature	Storage temperature
	(V)	(V)	(V)	(V)	(V)	(A)	(W)	(°C)	(°C)
Type No.	V _{CC}	V _{DS}	V _S	V _{IN}	V _{REF}	I _O	P _D	T _{ch}	T _{stg}
SLA7022MU	46	100	46	7	2	1	4.5 (No Fin)	150	-40 to +150
SLA7029M						1.5			

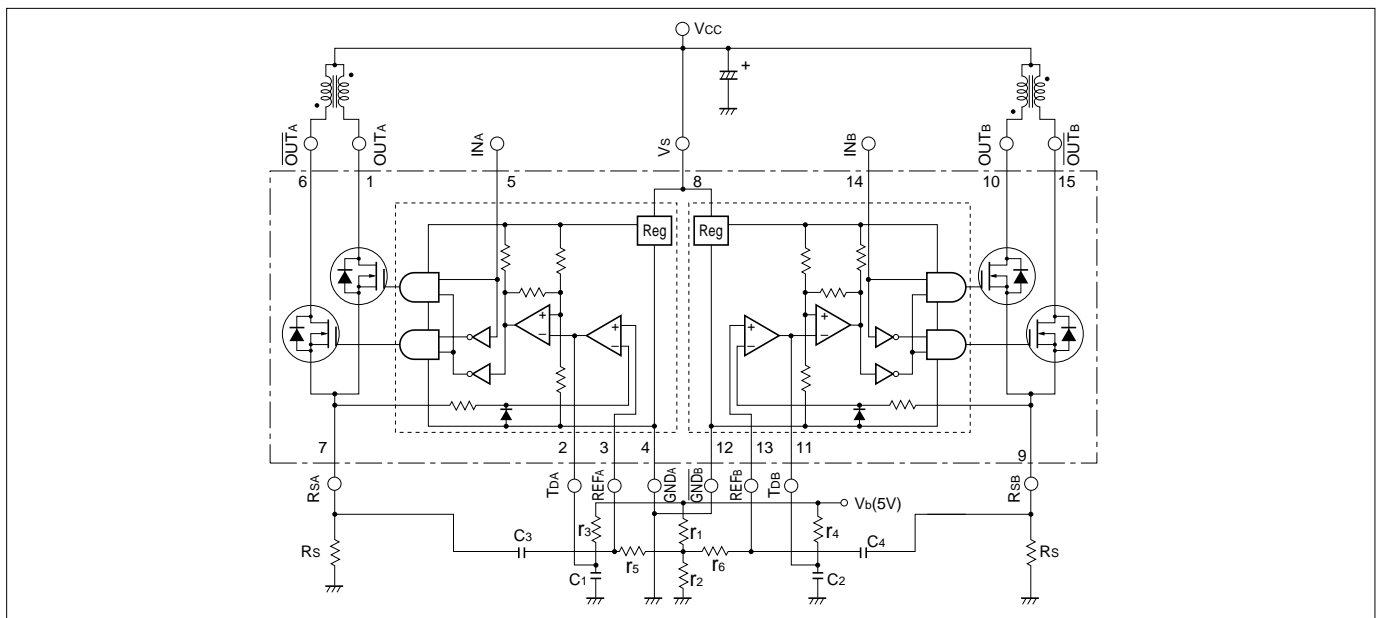
■ Characteristics (1) DC Characteristics

Electrical characteristics	Control current (mA)			Control voltage (V)			FET turn-on voltage (V)			FET drain leak current (mA)			TTL input current (μA)			TTL input current (mA)			TTL input voltage (OUT) (V)			TTL input voltage (V)			TTL input voltage (OUT) (V)			TTL input voltage (V)		
	V _S = 44V			V _S			I _D = 1A, V _S = 14V			V _{DSS} = 100V V _S = 44V			V _{IH} = 2.4V V _S = 44V			V _{IL} = 0.4V V _S = 44V			I _D = 1A			V _{DSS} = 100V			V _{DSS} = 100V			I _D = 1A		
	I _S			V _S			V _{DS}			I _{DSS}			I _{IH}			I _{IL}			V _{IH}			V _{IL}			V _{IH}			V _{IL}		
Type No.	min	typ	max	min	typ	max	min	typ	max	min	typ	max	min	typ	max	min	typ	max	min	typ	max	min	typ	max	min	typ	max	min	typ	max
SLA7022MU		10	15	10	24	44			0.85			4			40			-0.8	2.0			0.8	2.0							0.8
SLA7029M									0.6																					

(2) AC Characteristics

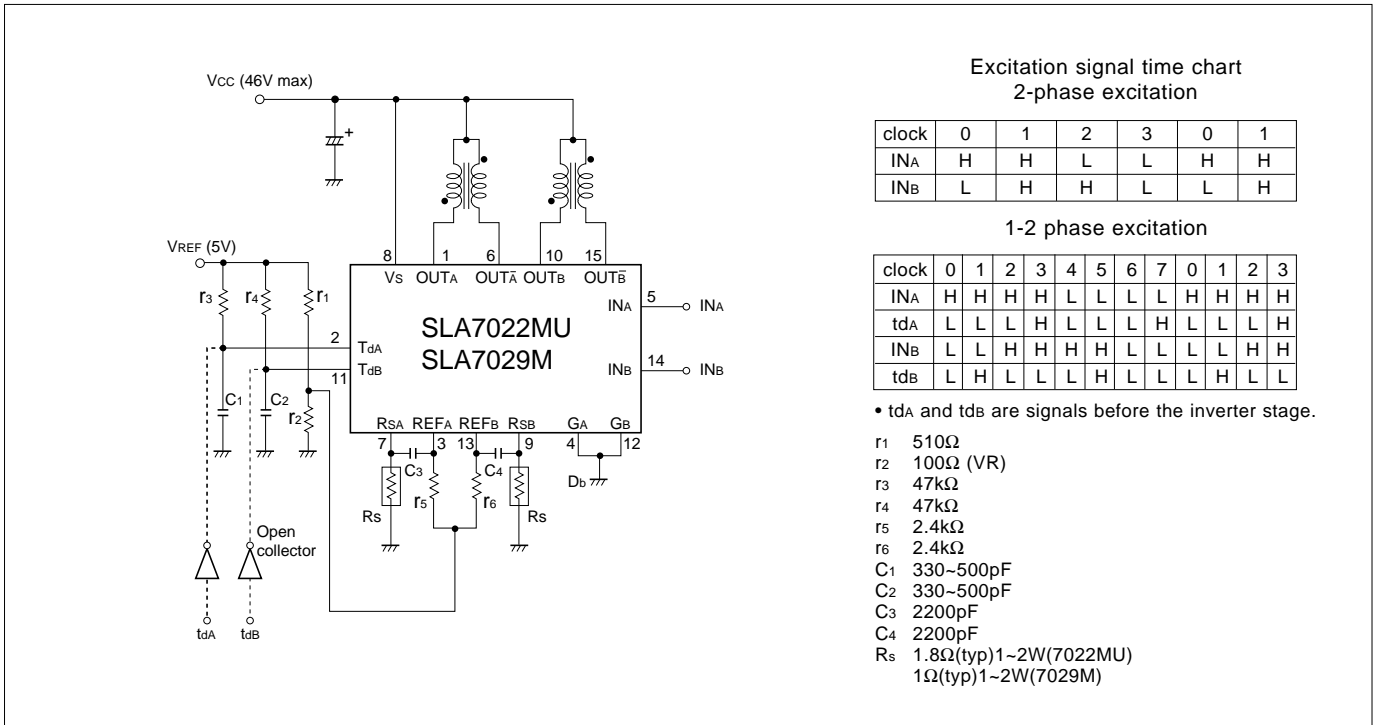
Electrical characteristics	FET diode forward voltage (V)			Switching time (μs)								
	I _{SD} = 1A			V _S = 24V (7022MU) I _D = 0.8A (7029M) I _D = 1A								
	V _{SD}			T _r			T _{stg}			T _f		
Type No.	min	typ	max	min	typ	max	min	typ	max	min	typ	max
SLA7022MU			1.2		0.5		0.7			0.1		
SLA7029M			1.1									

■ Internal circuit diagram (enclosed with chain line)



SLA7022MU and SLA7029M

■ Diagram of standard external circuit (Recommended circuit constants)



■ External dimensions

(Unit: mm)

