



GBPC 15, 25, 35 SERIES

High Current 15, 25, 35 AMPS. Single Phase Glass Passivated Bridge Rectifiers

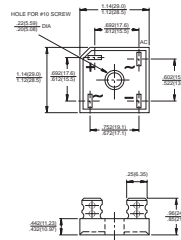


Voltage Range
50 to 1000 Volts
Current
15.0/25.0/35.0 Amperes

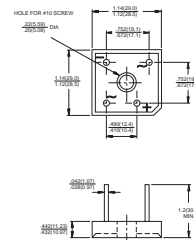
Features

- ✧ UL Recognized file # E-96005
- ✧ The plastic material used carries Underwriters Laboratory Flammability Recognition 94V-0
- ✧ Integrally molded heatsink provide very low thermal resistance for maximum heat dissipation
- ✧ Surge overload ratings from 300 amperes to 400 amperes
- ✧ Terminals solderable per MIL-STD-202, Method 208 (For wire type)
- ✧ Typical I_R less than 0.2 uA
- ✧ High temperature soldering guaranteed: 260°C / 10 seconds / .375", (9.5mm) lead lengths (For wire type)
- ✧ Isolated voltage from case to lead over 2500 volts

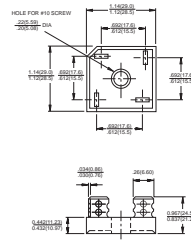
GBPC



GBPC-W



GBPC-M



Dimensions in inches and (millimeters)

Maximum Ratings and Electrical Characteristics

Rating at 25°C ambient temperature unless otherwise specified.

Single phase, half wave, 60 Hz, resistive or inductive load.

For capacitive load, derate current by 20%

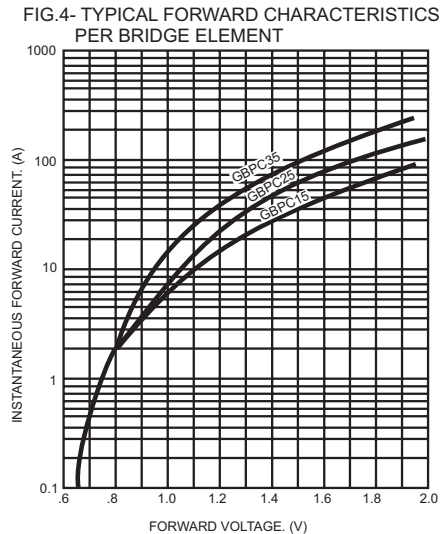
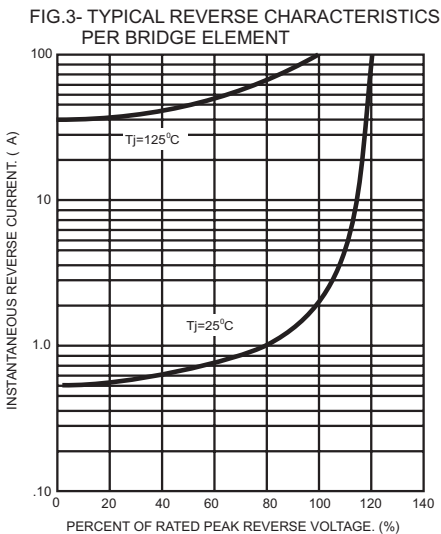
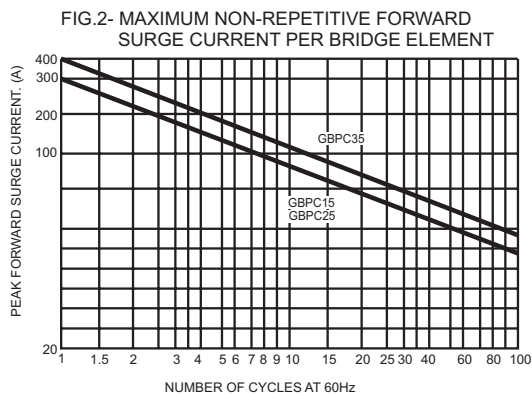
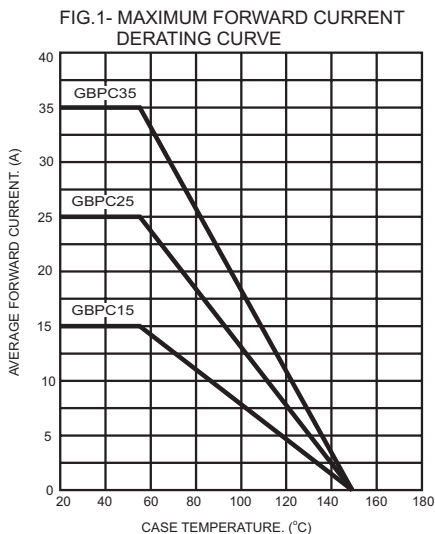
Type Number	Symbol	-005	-01	-02	-04	-06	-08	-10	Units
Maximum Recurrent Peak Reverse Voltage	V_{RRM}	50	100	200	400	600	800	1000	V
Maximum RMS Voltage	V_{RMS}	35	70	140	280	420	560	700	V
Maximum DC Blocking Voltage	V_{DC}	50	100	200	400	600	800	1000	V
Maximum Average Forward Rectified Current @ $T_C = 55^\circ\text{C}$	$I_{(AV)}$					15.0			A
Peak Forward Surge Current, Single Sine-wave Superimposed on Rated Load (JEDEC method)	I_{FSM}					300			A
Maximum Instantaneous Forward Voltage Drop Per Element at Specified Current	V_F					1.1			V
Maximum DC Reverse Current at Rated DC Blocking Voltage Per Element	I_R					5			uA
Typical Thermal Resistance (Note 1)	$R_{\theta JC}$					1.5			°C/W
Operating and Storage Temperature Range	T_J, T_{STG}					-50 to +150			°C

Notes: 1. Thermal Resistance from Junction to Case.

2. Suffix "W" - Wire Lead Structure/"M" - Terminal Location Face to Face.



GBPC15005 GBPC1510
 RATINGS AND CHARACTERISTIC CURVES (GBPC25005 THRU GBPC2510)
 GBPC35005 GBPC3510





LittleDiode supplies new, hard to find or obsolete electronic components and semiconductors all over the world.

With over two million different components listed you are sure to find the part you need.

Feel free to visit us today at our online store:

LittleDiode.com

Looking forward to providing you with the best possible service.