

GTL6C817

Low Drive GTLP/LVTTL 1:6 Clock Driver

General Description

The GTLP6C817 is a low drive clock driver that provides TTL to GTLP signal level translation (and vice versa). The device provides a high speed interface between cards operating at TTL logic levels and a backplane operating at GTLP logic levels. High speed backplane operation is a direct result of GTLP's reduced output swing (<1V), reduced input threshold levels and output edge rate control. The edge rate control minimizes bus settling time. GTLP is a Fairchild Semiconductor derivative of the Gunning Transceiver logic (GTL) JEDEC standard JESD8-3.

Fairchild's GTLP has internal edge-rate control and is process, voltage, and temperature (PVT) compensated. Its function is similar to BTL and GTL but with different output levels and receiver threshold. GTLP output LOW level is typically less than 0.5V, the output level HIGH is 1.5V and the receiver threshold is 1.0V.

Features

- Interface between LVTTL and GTLP logic levels
- Designed with edge rate control circuitry to reduce output noise on the GTLP port
- V_{REF} pin provides external supply reference voltage for receiver threshold adjustability
- Special PVT compensation circuitry to provide consistent performance over variations of process, supply voltage and temperature
- TTL compatible driver and control inputs
- Designed using Fairchild advanced CMOS technology
- Bushold data inputs on A port to eliminate the need for external pull-up resistors for unused inputs
- Power up/down and power off high impedance for live insertion
- 5V over voltage tolerance on LVTTL ports
- Open drain on GTLP to support wired-or connection
- A Port source/sink -12mA/+12mA
- B Port sink +40mA
- 1:6 fanout clock driver for TTL port
- 1:2 fanout clock driver for GTLP port

Ordering Code:

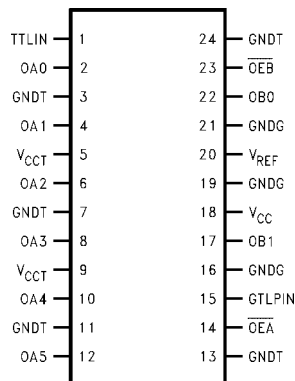
| Order Number | Package Number | Package Description |
|--------------|----------------|---|
| GTL6C817MTC | MTC24 | 24-Lead Thin Shrink Small Outline Package (TSSOP), JEDEC MO-153, 4.4mm Wide |

Device is also available in Tape and Reel. Specify by appending the suffix letter "X" to the ordering code.

Pin Descriptions

| Pin Names | Description |
|------------------|---|
| TTLIN, GTLPIN | Clock Inputs (TTL and GTLP respectively) |
| \overline{OEB} | Output Enable (Active LOW) GTLP Port (TTL Levels) |
| \overline{OEA} | Output Enable (Active LOW) TTL Port (TTL Levels) |
| V_{CCT} -GNDT | LVTTL Output Supplies (3V) |
| V_{CC} | Internal Circuitry V_{CC} (5V) |
| GNDG | OBn GTLP Output Grounds |
| V_{REF} | Voltage Reference Input |
| OA0-OA5 | TTL Buffered Clock Outputs |
| OB0-OB1 | GTLP Buffered Clock Outputs |

Connection Diagram



Functional Description

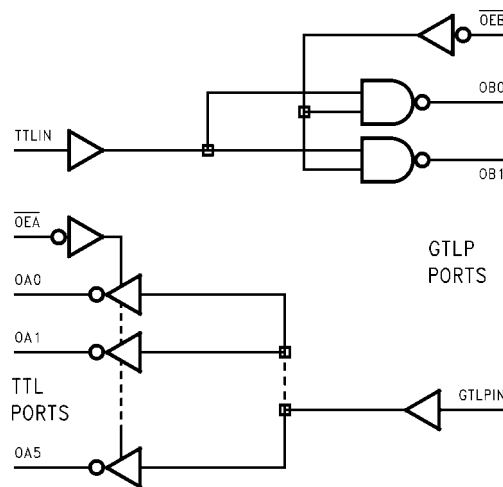
The GTLP6C817 is a low drive clock driver providing LVTTTL-to-GTLP clock translation, and GTLP-to-LVTTTL clock translation in the same package. The LVTTTL-to-GTLP direction is a 1:2 clock driver path with a single Enable pin (\overline{OEB}). For the GTLP-to-LVTTTL direction the clock receiver path is a 1:6 buffer with a single Enable control (\overline{OEA}). Data polarity is inverting for both directions.

Truth Tables

| Inputs | | Outputs |
|--------|------------------|---------|
| TTLIN | \overline{OEB} | OBn |
| H | L | L |
| L | L | H |
| X | H | High Z |

| Inputs | | Outputs |
|--------|------------------|---------|
| GTLPIN | \overline{OEA} | OAn |
| H | L | L |
| L | L | H |
| X | H | High Z |

Logic Diagram



| Absolute Maximum Ratings (Note 1) | | Recommended Operating Conditions (Note 3) | |
|--------------------------------------|-----------------|---|----------------|
| Supply Voltage (V_{CC}) | -0.5V to +7.0V | Supply Voltage | |
| DC Input Voltage (V_I) | -0.5V to +7.0V | V_{CC} | 4.75V to 5.25V |
| DC Output Voltage (V_O) | | V_{CCT} | 3.15V to 3.45V |
| Outputs 3-STATE | -0.5V to +7.0V | Bus Termination Voltage (V_{TT}) | |
| Outputs Active (Note 2) | -0.5V to +7.0V | GTLP | 1.47V to 1.53V |
| DC Output Sink Current into | | V_{REF} | 0.98V to 1.02V |
| OA Port I_{OL} | 24 mA | Input Voltage (V_I) on INA Port | |
| DC Output Source Current | | and Control Pins | 0.0V to 5.5V |
| from OA Port I_{OH} | -24 mA | HIGH Level Output Current (I_{OH}) | |
| DC Output Sink Current into | | OA Port | -12 mA |
| OB Port in the LOW State I_{OL} | 80 mA | LOW Level Output Current (I_{OL}) | |
| DC Input Diode Current (I_{IK}) | | OA Port | +12 mA |
| $V_I < 0V$ | -50 mA | OB Port | +40 mA |
| DC Output Diode Current (I_{OK}) | | Operating Temperature (T_A) | -40°C to +85°C |
| $V_O < 0V$ | -50 mA | | |
| $V_O > V_{CC}$ | +50 mA | | |
| ESD Rating | > 2000V | | |
| Storage Temperature (T_{STG}) | -65°C to +150°C | | |

Note 1: Absolute Maximum continuous ratings are those values beyond which damage to the device may occur. Exposure to these conditions or conditions beyond those indicated may adversely affect device reliability. Functional operation under absolute maximum rated conditions is not implied.

Note 2: I_o Absolute Maximum Rating must be observed.

Note 3: Unused input must be held HIGH or LOW.

DC Electrical Characteristics

Over Recommended Operating Free-Air Temperature Range, $V_{REF} = 1.0V$ (unless otherwise noted).

| Symbol | | Test Conditions | | Min | Typ (Note 4) | Max | Units |
|-----------------------|-------------------------------|---------------------------------------|--------------------------------|------------------|--------------|------------------|---------|
| V_{IH} | GTLPIN | | | $V_{REF} + 0.05$ | | V_{TT} | V |
| | Others | | | 2.0 | | | |
| V_{IL} | GTLPIN | | | 0.0 | | $V_{REF} - 0.05$ | V |
| | Others | | | | | 0.8 | |
| V_{REF} (Note 5) | GTLP | | | | 1.0 | | V |
| | GTL | | | | 0.8 | | |
| V_{TT} (Note 5) | GTLP | | | | 1.5 | | V |
| | GTL | | | | 1.2 | | |
| V_{IK} | | $V_{CC} = 4.75V$ $V_{CCT} = 3.15V$ | $I_i = -18 mA$ | | | -1.2 | V |
| V_{OH} | OAn Port | $V_{CC} = 4.75V$ $V_{CCT} = 3.15V$ | $I_{OH} = -100 \mu A$ | $V_{CC} - 0.2$ | | | |
| | | | $I_{OH} = -6 mA$ | 2.4 | | | |
| | | | $I_{OH} = -12 mA$ | 2.2 | | | |
| V_{OL} | OAn Port | $V_{CC} = 4.75V$ $V_{CCT} = 3.15V$ | $I_{OL} = 100 \mu A$ | | | 0.2 | |
| | | | $I_{OL} = 6 mA$ | | | 0.4 | |
| | | | $I_{OL} = 12 mA$ | | | 0.5 | |
| V_{OL} | OBn Port | $V_{CC} = 4.75V$ $V_{CCT} = 3.15V$ | $I_{OL} = 100 \mu A$ | | | 0.2 | |
| | | | $I_{OL} = 40 mA$ | | | 0.5 | |
| I_i | TTLIN/ Control Pins | $V_{CC} = 5.25V$ $V_{CCT} = 3.45V$ | $V_I = 5.25V$ | | | 5 | μA |
| | | | $V_I = 0V$ | | | -5 | |
| | GTLPIN | $V_{CC} = 5.25V$ $V_{CCT} = 3.45V$ | $V_I = V_{TT}$ $V_I = 0$ | | | 5 -5 | μA |
| I_{OFF} | TTLIN, OAn Port, Control Pins | $V_{CC} = 0$ | V_I or $V_O = 0V$ to $5.25V$ | | | 30 | μA |
| | GTLPIN, OBn Port | $V_{CCT} = 0$ | V_I or $V_O = 0$ to V_{TT} | | | 30 | |
| I_{OZH} | OAn Port | $V_{CC} = 5.25V$ | $V_O = 5.25V$ | | | 5 | μA |
| | OBn Port | $V_{CCT} = 3.45V$ | $V_O = 1.5V$ | | | 5 | |
| I_{OZL} | OAn Port | $V_{CC} = 5.25V$ | $V_O = 0$ | | | -5 | μA |
| | OBn Port | $V_{CCT} = 3.45V$ | $V_O = 0$ | | | | |

| DC Electrical Characteristics (Continued) | | | | | | | |
|---|--|---------------------------------------|---|-------------------------------------|--------------|-------|---------------|
| Symbol | | Test Conditions | | Min | Typ (Note 4) | Max | Units |
| $I_{PU/PD}$ | All Ports | $V_{CC} = V_{CCT} = 0$ to 1.5V | | $\overline{OE} = \text{Don't Care}$ | | 30 | μA |
| $I_{CC} (5V)$ | OAn or OBn Ports | $V_{CC} = 5.25V$ $V_{CCT} = 3.45V$ | Outputs HIGH | | | 10 | mA |
| | | | Outputs LOW | | | 10 | |
| | | | Outputs Disabled $V_I = V_{CC}$ or GND | | | 10 | |
| $I_{CC} (3V)$ | OAn or OBn Ports | $V_{CC} = 5.25V$ $V_{CCT} = 3.45V$ | Outputs HIGH, LOW | | | 45 | μA |
| | | | Outputs Disabled $V_I = V_{CC}$ or GND | | | 45 | |
| ΔI_{CC} | TTLIN | $V_{CC} = 5.25V$ $V_{CCT} = 3.45V$ | $V_I = V_{CC} - 2.1$ | | | 1 | mA |
| C_{IN} | Control Pins/GTL PIN/TTLIN | | $V_I = V_{CC}$ or 0 | | 3 | 3.5 | pF |
| C_{OUT} | OAn Port | | $V_I = V_{CC}$ or 0 | | 3 | 4.5 | pF |
| | OBn Port | | $V_I = V_{CC}$ or 0 | | 4 | 5 | |
| <p>Note 4: All typical values are at $V_{CC} = 5.0V$, $V_{CCT} = 3.3V$ and $T_A = 25^\circ\text{C}$.</p> <p>Note 5: GTLP V_{REF} and V_{TT} are specified to 2% tolerance since signal integrity and noise margin can be significantly degraded if these supplies are noisy. In addition, V_{TT} and R_{TERM} can be adjusted to accommodate backplane impedances other than 50Ω, within the boundaries of not exceeding the DC Absolute I_{OL} ratings. Similarly V_{REF} can be adjusted to compensate for changes in V_{TT}.</p> | | | | | | | |
| AC Electrical Characteristics | | | | | | | |
| Over recommended range of supply voltage and operating free air temperature. $V_{REF} = 1.0V$ (unless otherwise noted). $C_L = 30$ pF for OBn Port and $C_L = 50$ pF for OAn Port. | | | | | | | |
| Symbol | From (Input) | To (Output) | Min | Typ (Note 6) | Max | Units | |
| t_{PLH} | TTLIN | OBn | 2.3 | | 4.7 | ns | |
| t_{PHL} | | | 1.5 | | 4.6 | | |
| t_{PLH} | \overline{OEB} | OBn | 2.4 | | 4.8 | ns | |
| t_{PHL} | | | 1.6 | | 4.7 | | |
| t_{RISE} | Transition Time, OB Outputs (20% to 80%) | | | 1.7 | | ns | |
| t_{FALL} | Transition Time, OB outputs (20% to 80%) | | | 2.1 | | ns | |
| t_{RISE} | Transition Time, OA outputs (10% to 90%) | | | 2.7 | | ns | |
| t_{FALL} | Transition Time, OA outputs (10% to 90%) | | | 2.2 | | ns | |
| t_{PZH}, t_{PZL} | \overline{OEA} | OAn | 2.4 | | 6.5 | ns | |
| t_{PLZ}, t_{PHZ} | | | 2.0 | | 6.5 | | |
| t_{PLH} | GTL PIN | OAn | 3.1 | | 6.6 | ns | |
| t_{PHL} | | | 2.8 | | 6.0 | | |
| <p>Note 6: All typical values are at $V_{CC} = 5.0V$ and $T_A = 25^\circ\text{C}$.</p> | | | | | | | |

Extended Electrical Characteristics

Over recommended ranges of supply voltage and operating free-air temperature $V_{REF} = 1.0V$ (unless otherwise noted).

$C_L = 30$ pF for B Port and $C_L = 50$ pF for A Port.

| Symbol | From (Input) | To (Output) | Min | Typ (Note 7) | Max | Unit |
|-------------------------------------|--------------|-------------|-----|--------------|-----|------|
| t_{OSLH} (Note 8) | A | B | | .05 | .4 | ns |
| t_{OSHL} (Note 8) | A | B | | .05 | .4 | ns |
| t_{PS} (Note 9) | A | B | | 0.5 | 1.0 | ns |
| $t_{PV(HL)}$ (Note 10) (Note 11) | A | B | | | .7 | ns |
| t_{OSLH} (Note 8) | B | A | | .12 | .5 | ns |
| t_{OSHL} (Note 8) | B | A | | .12 | .5 | ns |
| t_{OST} (Note 8) | B | A | | .6 | 1.0 | ns |
| t_{PS} (Note 9) | B | A | | 0.5 | 1.0 | ns |
| t_{PV} (Note 10) | B | A | | | 1.2 | ns |

Note 7: All typical values are at $V_{CC} = 5.0V$ and $T_A = 25^\circ C$.

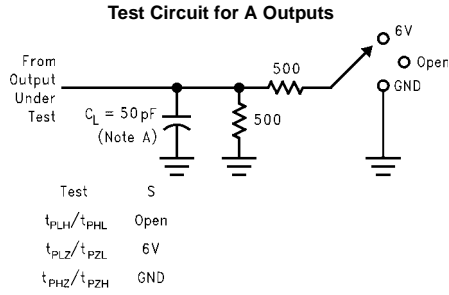
Note 8: t_{OSHL}/t_{OSLH} and t_{OST} - Output-to-Output skew is defined as the absolute value of the difference between the actual propagation delay for all outputs within the same packaged device. The specifications are given for specific worst case V_{CC} and temperature and apply to any outputs switching in the same direction either HIGH-to-LOW (t_{OSHL}) or LOW-to-HIGH (t_{OSLH}) or in opposite directions both HL and LH (t_{OST}). This parameter is guaranteed by design and statistical process distribution. Actual skew values between the GTLP outputs could vary on the backplane due to the loading and impedance seen by the device.

Note 9: t_{PS} - Pin or Transition skew is defined as the difference between the LOW-to-HIGH transition and the HIGH-to-LOW transition on the same pin. The parameter is measured across all the outputs of the same chip is specified for a specific worst case V_{CC} and temperature. This parameter is guaranteed by design and statistical process distribution. Actual skew values between the GTLP outputs could vary on the backplane due to the loading and impedance seen by the device.

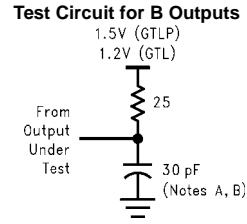
Note 10: t_{PV} - Part-to-Part skew is defined as the absolute value of the difference between the actual propagation design for all outputs from device-to-device. The parameter is specified for a specific worst case V_{CC} and temperature. This parameter is guaranteed by design and statistical process distribution. Actual skew values between the GTLP output could vary on the backplane due to the loading and impedance seen by the device.

Note 11: Due to the open drain structure on GTLP outputs, t_{OST} and $t_{PV(LH)}$ in the A-to-B direction are not specified. Skew on these paths is dependent on the V_{TT} and R_T values in the actual application.

Test Circuit and Timing Waveforms

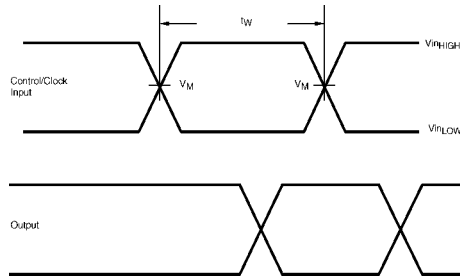


Note A: C_L includes probes and jig capacitance.

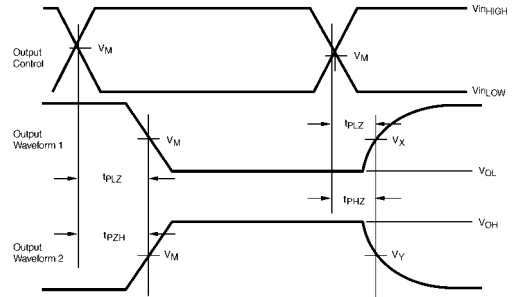


Note A: C_L includes probes and jig capacitance.
Note B: For B Port $C_L = 30 \text{ pF}$ is used for worst case.

Voltage Waveform - Propagation Delay Times



Voltage Waveform - Enable and Disable Times



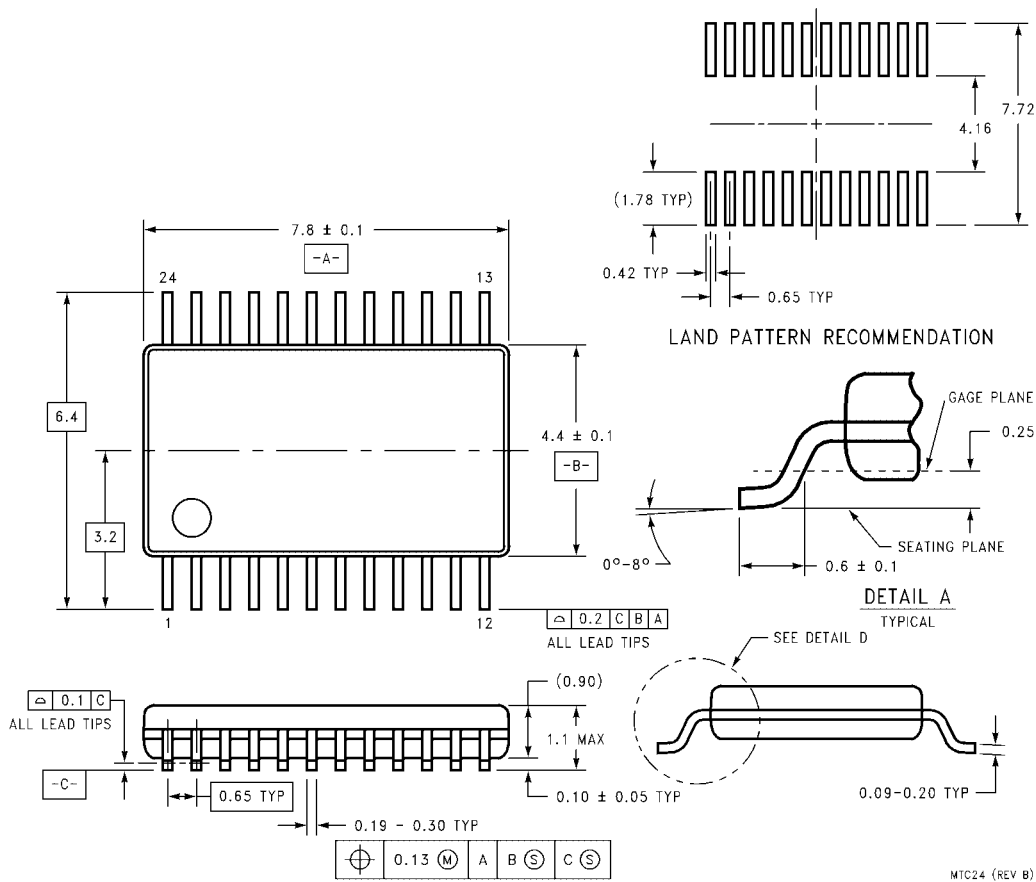
Output Waveform 1 is for an output with internal conditions such that the output is LOW except when disabled by the control output
 Output Waveforms 2 is for an output with internal conditions such that the output is HIGH except when disabled by the control output

Input and Measure Conditions

| | A or LVTTTL Pins | B or GTLP Pins |
|--------------|------------------|----------------|
| V_{inHIGH} | V_{CC} | 1.5 |
| V_{inLOW} | 0.0 | 0.0 |
| V_M | $V_{CC}/2$ | 1.0 |
| V_X | $V_{OL} + 0.3V$ | N/A |
| V_Y | $V_{OH} + 0.3V$ | N/A |

All input pulses have the following characteristics: Frequency = 10MHz, $t_{RISE} = t_{FALL} = 2 \text{ ns}$, $Z_O = 50\Omega$.
 The outputs are measured one at a time with one transition per measurement.

Physical Dimensions inches (millimeters) unless otherwise noted



**24-Lead Thin Shrink Small Outline Package (TSSOP), JEDEC MO-153, 4.4mm Wide
Package Number MTC24**

Fairchild does not assume any responsibility for use of any circuitry described, no circuit patent licenses are implied and Fairchild reserves the right at any time without notice to change said circuitry and specifications.

LIFE SUPPORT POLICY

FAIRCHILD'S PRODUCTS ARE NOT AUTHORIZED FOR USE AS CRITICAL COMPONENTS IN LIFE SUPPORT DEVICES OR SYSTEMS WITHOUT THE EXPRESS WRITTEN APPROVAL OF THE PRESIDENT OF FAIRCHILD SEMICONDUCTOR CORPORATION. As used herein:

1. Life support devices or systems are devices or systems which, (a) are intended for surgical implant into the body, or (b) support or sustain life, and (c) whose failure to perform when properly used in accordance with instructions for use provided in the labeling, can be reasonably expected to result in a significant injury to the user.
2. A critical component in any component of a life support device or system whose failure to perform can be reasonably expected to cause the failure of the life support device or system, or to affect its safety or effectiveness.

www.fairchildsemi.com



LittleDiode supplies new, hard to find or obsolete electronic components and semiconductors all over the world.

With over two million different components listed you are sure to find the part you need.

Feel free to visit us today at our online store:

LittleDiode.com

Looking forward to providing you with the best possible service.