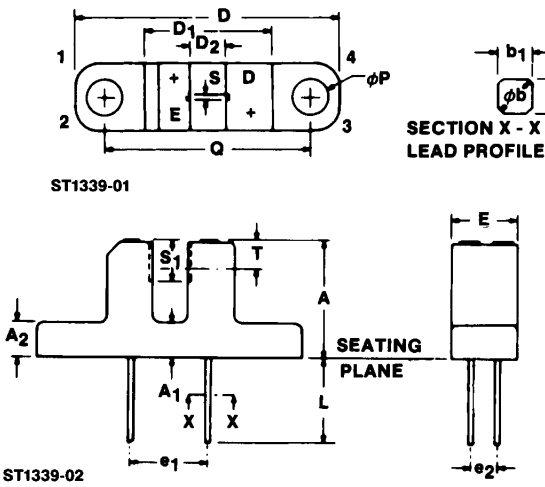


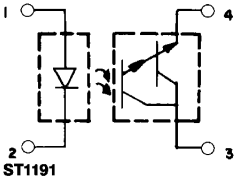
PACKAGE DIMENSIONS



SYMBOL	MILLIMETERS		INCHES		NOTES
	MIN.	MAX.	MIN.	MAX.	
A	10.7	11.0	.422	.433	
A ₁	3.0	3.2	.119	.125	
A ₂	3.0	3.2	.119	.125	
@b	.600	.750	.024	.030	2
b ₁	.50 NOM.		.020 NOM.		2
D	24.3	24.7	.957	.972	
D ₁	11.6	12.0	.457	.472	
D ₂	3.0	3.3	.119	.129	
e ₁	6.9	7.5	.272	.295	
e ₂	2.3	2.8	.091	.110	
E	6.15	6.35	.243	.249	
L	8.00		.315		
@p	3.2	3.4	.126	.133	
Q	18.9	19.2	.745	.755	
S	.85	1.0	.034	.039	
S ₁	3.45	3.75	.136	.147	
T	2.6 NOM.		.103 NOM.		3

- NOTES:
1. INCH DIMENSIONS ARE DERIVED FROM MILLIMETERS.
 2. FOUR LEADS. LEAD CROSS SECTION IS CONTROLLED BETWEEN 1.27mm (.050") FROM SEATING PLANE AND THE END OF THE LEADS.
 3. THE SENSING AREA IS DEFINED BY THE "S" DIMENSION AND BY DIMENSION "T" ±0.75mm (±.030 INCH).

PACKAGE OUTLINE



DESCRIPTION

The H21B Slotted Optical Switch is a gallium arsenide light emitting diode coupled to a silicon photodarlington in a plastic housing. The packaging system is designed to optimize the mechanical resolution, coupling efficiency, ambient light rejection, cost and reliability. The gap in the housing provides a means of interrupting the signal with an opaque material, switching the output from an "ON" to an "OFF" state.

FEATURES

- Opaque housing
- Low cost
- .035" apertures
- High I_{C(ON)}



SLOTTED OPTICAL SWITCH

ABSOLUTE MAXIMUM RATINGS ($T_A = 25^\circ\text{C}$ Unless Otherwise Specified)	
Storage Temperature	-55°C to $+100^\circ\text{C}$
Operating Temperature	-55°C to $+100^\circ\text{C}$
Soldering:	
Lead Temperature (Iron)	240°C for 5 sec. ^(3,4,5)
Lead Temperature (Flow)	260°C for 10 sec. ^(3,4)
INPUT DIODE	
Continuous Forward Current	60 mA
Reverse Voltage	6.0 Volts
Power Dissipation	100 mW ⁽¹⁾
OUTPUT DARLINGTON	
Collector-Emitter Voltage	30 Volts
Emitter-Collector Voltage	7 Volts
Power Dissipation	150 mW ⁽²⁾

ELECTRICAL CHARACTERISTICS ($T_A = 25^\circ\text{C}$ Unless Otherwise Specified)						
PARAMETER	SYMBOL	MIN.	TYP.	MAX.	UNITS	TEST CONDITIONS
INPUT DIODE						
Forward Voltage	V_F	—		1.7	V	$I_F = 60\text{ mA}$
Reverse Breakdown Voltage	V_R	6.0		—	V	$I_R = 10\mu\text{A}$
Reverse Leakage Current	I_R	—		1.0	μA	$V_R = 3\text{ V}$
OUTPUT DARLINGTON						
Emitter-Collector Breakdown	BV_{ECO}	7.0		—	V	$I_E = 100\mu\text{A}$, $E_e = 0$
Collector-Emitter Breakdown	BV_{CEO}	30		—	V	$I_C = 1\text{ mA}$, $E_e = 0$
Collector-Emitter Leakage	I_{CEO}	—		100	nA	$V_{CE} = 25\text{ V}$, $E_e = 0$
COUPLED						
On-State Collector Current	$I_{C(ON)}$		See page 3.		mA	
Saturation Voltage	$V_{CE(SAT)}$		See page 3.		V	
Turn-On Time	t_{on}		See page 3.		μS	
Turn-Off Time	t_{off}		See page 3.		μS	

NOTES
<ol style="list-style-type: none"> Derate power dissipation linearly $1.33\text{ mW}/^\circ\text{C}$ above 25°C. Derate power dissipation linearly $2.00\text{ mW}/^\circ\text{C}$ above 25°C. RMA flux is recommended. Methanol or Isopropyl alcohols are recommended as cleaning agents. Soldering iron tip $1/16"$ (1.6 mm) from housing.



SLOTTED OPTICAL SWITCH

$I_{C(ON)}$, $V_{CE(SAT)}$, t_{on} AND t_{off}						
PARAMETER	SYMBOL	MIN.	TYP.	MAX.	UNITS	TEST CONDITIONS
ON-STATE COLLECTOR CURRENT						
H21B1	$I_{C(ON)}$	0.5	—	—	mA	$I_f = 2\text{mA}$, $V_{CE} = 1.5\text{V}$
H21B2	$I_{C(ON)}$	1.0	—	—	mA	$I_f = 2\text{mA}$, $V_{CE} = 1.5\text{V}$
H21B3	$I_{C(ON)}$	2.0	—	—	mA	$I_f = 2\text{mA}$, $V_{CE} = 1.5\text{V}$
H21B1	$I_{C(ON)}$	2.5	—	—	mA	$I_f = 5\text{mA}$, $V_{CE} = 1.5\text{V}$
H21B2	$I_{C(ON)}$	5.0	—	—	mA	$I_f = 5\text{mA}$, $V_{CE} = 1.5\text{V}$
H21B3	$I_{C(ON)}$	10	—	—	mA	$I_f = 5\text{mA}$, $V_{CE} = 1.5\text{V}$
H21B1	$I_{C(ON)}$	7.5	—	—	mA	$I_f = 10\text{mA}$, $V_{CE} = 1.5\text{V}$
H21B2	$I_{C(ON)}$	14	—	—	mA	$I_f = 10\text{mA}$, $V_{CE} = 1.5\text{V}$
H21B3	$I_{C(ON)}$	25	—	—	mA	$I_f = 10\text{mA}$, $V_{CE} = 1.5\text{V}$
SATURATION VOLTAGE						
H21B1	$V_{CE(SAT)}$	—	—	1.0	V	$I_f = 10\text{mA}$, $I_c = 1.8\text{mA}$
H21B2	$V_{CE(SAT)}$	—	—	1.0	V	$I_f = 10\text{mA}$, $I_c = 1.8\text{mA}$
H21B3	$V_{CE(SAT)}$	—	—	1.0	V	$I_f = 10\text{mA}$, $I_c = 1.8\text{mA}$
H21B2	$V_{CE(SAT)}$	—	—	1.5	V	$I_f = 60\text{mA}$, $I_c = 50\text{mA}$
H21B3	$V_{CE(SAT)}$	—	—	1.5	V	$I_f = 60\text{mA}$, $I_c = 50\text{mA}$
Turn-On Time						
H21B1, H21B2, H21B3	t_{on}	—	45	—	μS	$V_{CC} = 5\text{V}$, $I_f = 10\text{mA}$, $R_L = 750\Omega$
H21B1, H21B2, H21B3	t_{on}	—	7	—	μS	$V_{CC} = 5\text{V}$, $I_f = 60\text{mA}$, $R_L = 75\Omega$
Turn-Off Time						
H21B1, H21B2, H21B3	t_{off}	—	250	—	μS	$V_{CC} = 5\text{V}$, $I_f = 10\text{mA}$, $R_L = 750\Omega$
H21B1, H21B2, H21B3	t_{off}	—	45	—	μS	$V_{CC} = 5\text{V}$, $I_f = 60\text{mA}$, $R_L = 75\Omega$

TYPICAL CHARACTERISTICS

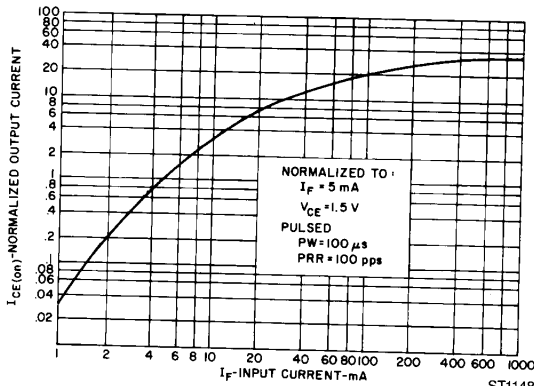


Fig. 1. Output Current vs. Input Current

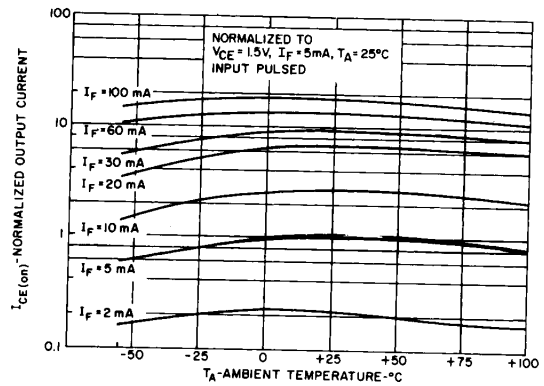


Fig. 2. Output Current vs. Temperature

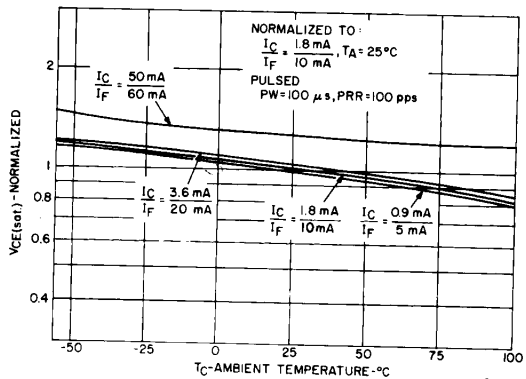


Fig. 3. $V_{CE(sat)}$ vs. Temperature

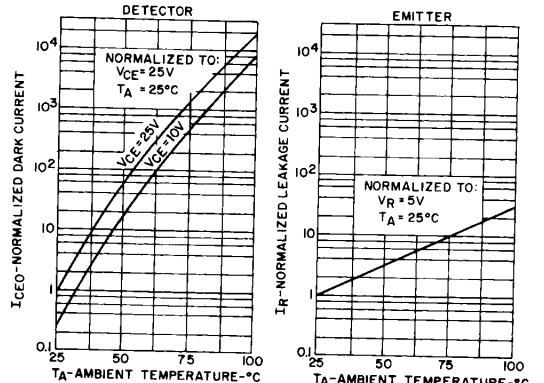


Fig. 4. Leakage Current vs. Temperature

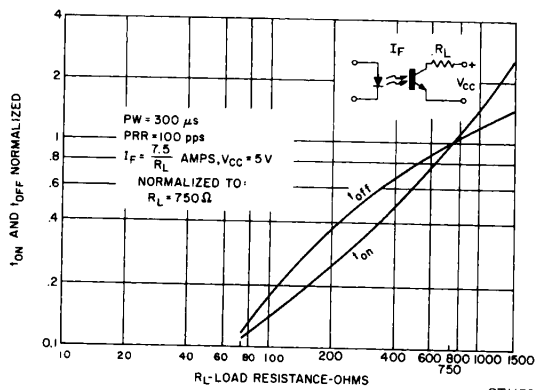


Fig. 5. Switching Speed vs. R_L

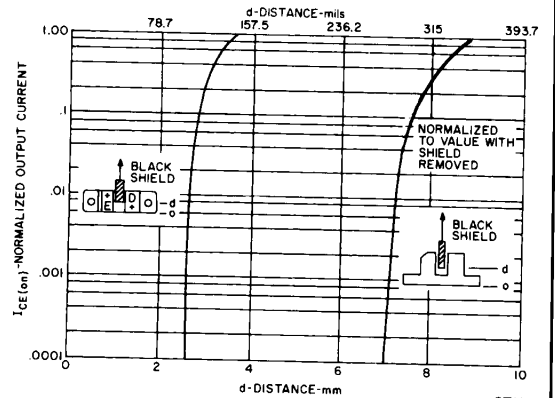


Fig. 6. Output Current vs. Shield Distance



LittleDiode supplies new, hard to find or obsolete electronic components and semiconductors all over the world.

With over two million different components listed you are sure to find the part you need.

Feel free to visit us today at our online store:

LittleDiode.com

Looking forward to providing you with the best possible service.