

DATA SHEET

For a complete data sheet, please also download:

- The IC04 LOCMOS HE4000B Logic Family Specifications HEF, HEC
- The IC04 LOCMOS HE4000B Logic Package Outlines/Information HEF, HEC

HEF4014B

MSI

8-bit static shift register

Product specification
File under Integrated Circuits, IC04

January 1995

8-bit static shift register

HEF4014B
MSI

DESCRIPTION

The HEF4014B is a fully synchronous edge-triggered 8-bit static shift register with eight synchronous parallel inputs (P₀ to P₇), a synchronous serial data input (D_S), a synchronous parallel enable input (PE), a LOW to HIGH edge-triggered clock input (CP) and buffered parallel outputs from the last three stages (O₅ to O₇).

Operation is synchronous and the device is edge-triggered on the LOW to HIGH transition of CP. Each register stage is of a D-type master-slave flip-flop. When PE is HIGH, data is loaded into the register from P₀ to P₇ on the LOW to HIGH transition of CP. When PE is LOW, data is shifted to the first position from D_S, and all the data in the register is shifted one position to the right on the LOW to HIGH transition of CP. Schmitt-trigger action in the clock input makes the circuit highly tolerant to slower clock rise and fall times

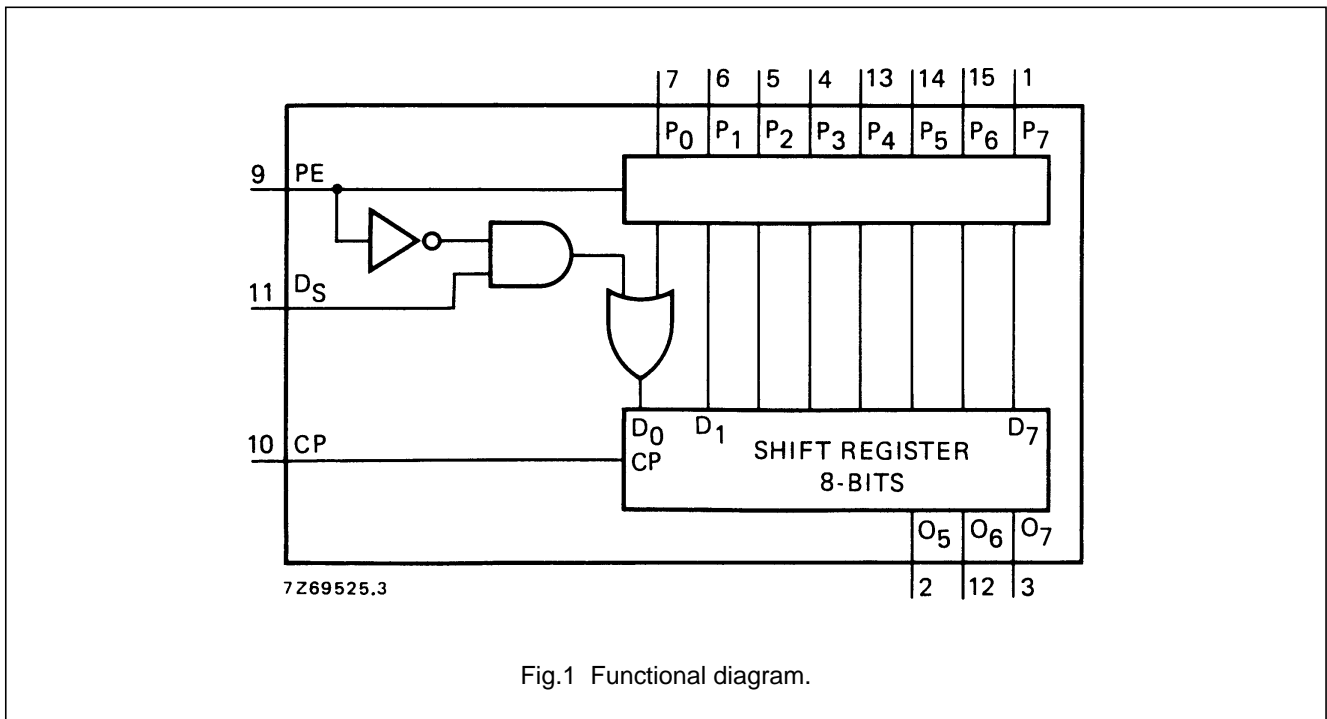


Fig.1 Functional diagram.

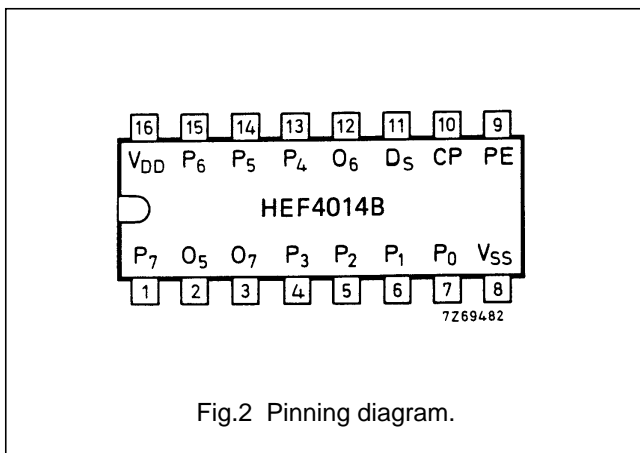


Fig.2 Pinning diagram.

- HEF4014BP(N): 16-lead DIL; plastic (SOT38-1)
- HEF4014BD(F): 16-lead DIL; ceramic (cerdip) (SOT74)
- HEF4014BT(D): 16-lead SO; plastic (SOT109-1)
- (): Package Designator North America

FAMILY DATA, I_{DD} LIMITS category MSI

See Family Specifications

8-bit static shift register

HEF4014B
MSI

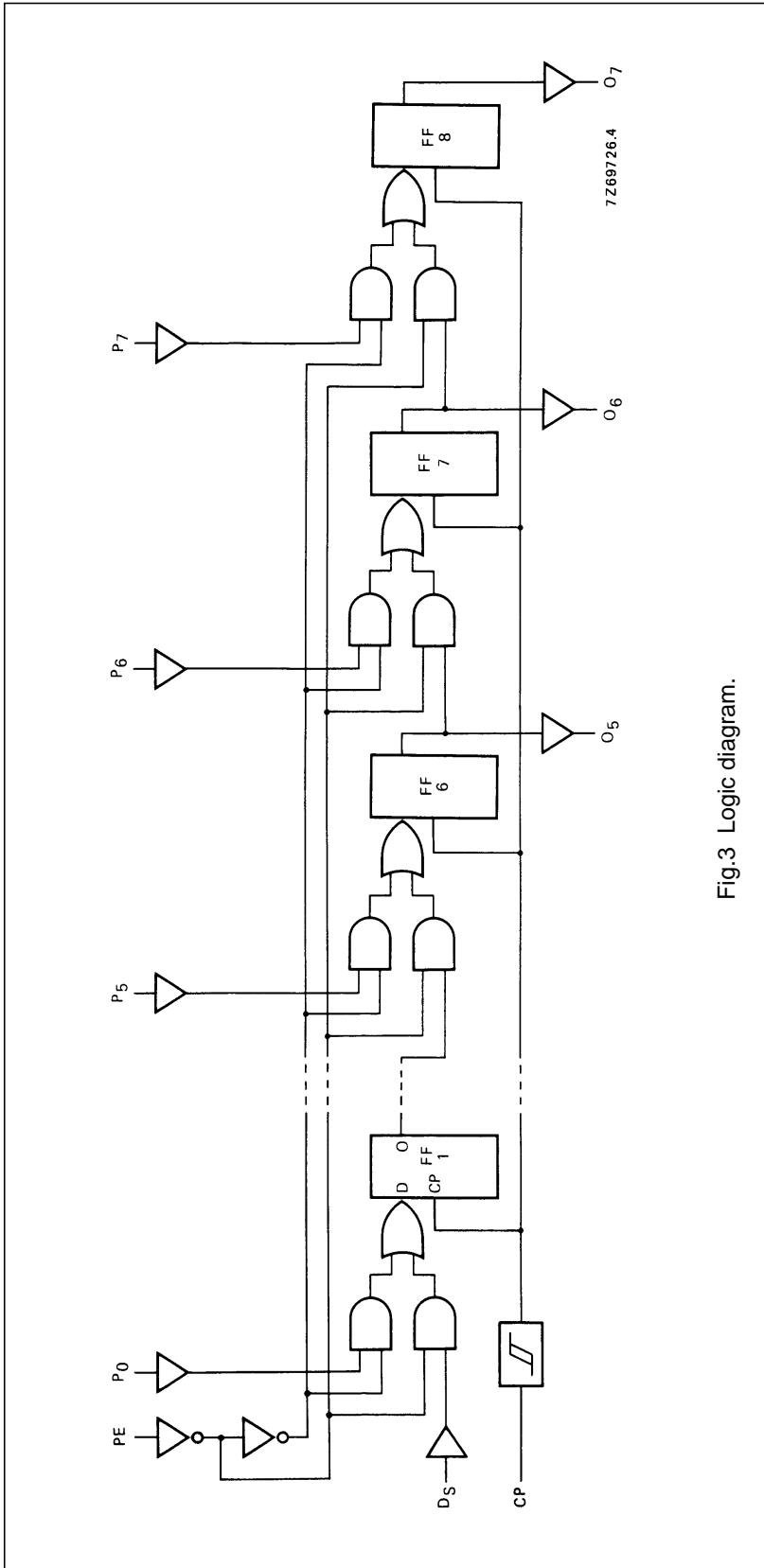


Fig.3 Logic diagram.

8-bit static shift register

HEF4014B
MSI

PINNING

- PE parallel enable input
- P₀ to P₇ parallel data inputs
- D_S serial data input
- CP clock input (LOW to HIGH edge-triggered)
- O₅ to O₇ buffered parallel outputs from the last three stages

FUNCTION TABLES

Serial operation

n	INPUTS			OUTPUTS		
	CP	D _S	PE	O ₅	O ₆	O ₇
1		D ₁	L	X	X	X
2		D ₂	L	X	X	X
3		D ₃	L	X	X	X
6		X	L	D ₁	X	X
7		X	L	D ₂	D ₁	X
8		X	L	D ₃	D ₂	D ₁
		X	X	no change		

Parallel operation

n	INPUTS			OUTPUTS		
	CP	D _S	PE	O ₅	O ₆	O ₇
1		X	H	P ₅	P ₆	P ₇
		X	X	no change		

Notes

1. H = HIGH state (the more positive voltage)
 L = LOW state (the less positive voltage)
 X = state is immaterial
- = positive-going transition
 = negative-going transition
 D_n = either HIGH or LOW
 n = number of clock pulse transitions

AC CHARACTERISTICS

V_{SS} = 0 V; T_{amb} = 25 °C; C_L = 50 pF; input transition times ≤ 20 ns

	V _{DD} V	TYPICAL FORMULA FOR P (μW)	
Dynamic power dissipation per package (P)	5 10 15	900 f _i + ∑ (f _o C _L) × V _{DD} ² 4 300 f _i + ∑ (f _o C _L) × V _{DD} ² 12 000 f _i + ∑ (f _o C _L) × V _{DD} ²	where f _i = input freq. (MHz) f _o = output freq. (MHz) C _L = load cap. (pF) ∑ (f _o C _L) = sum of outputs V _{DD} = supply voltage (V)

8-bit static shift register

HEF4014B
MSI

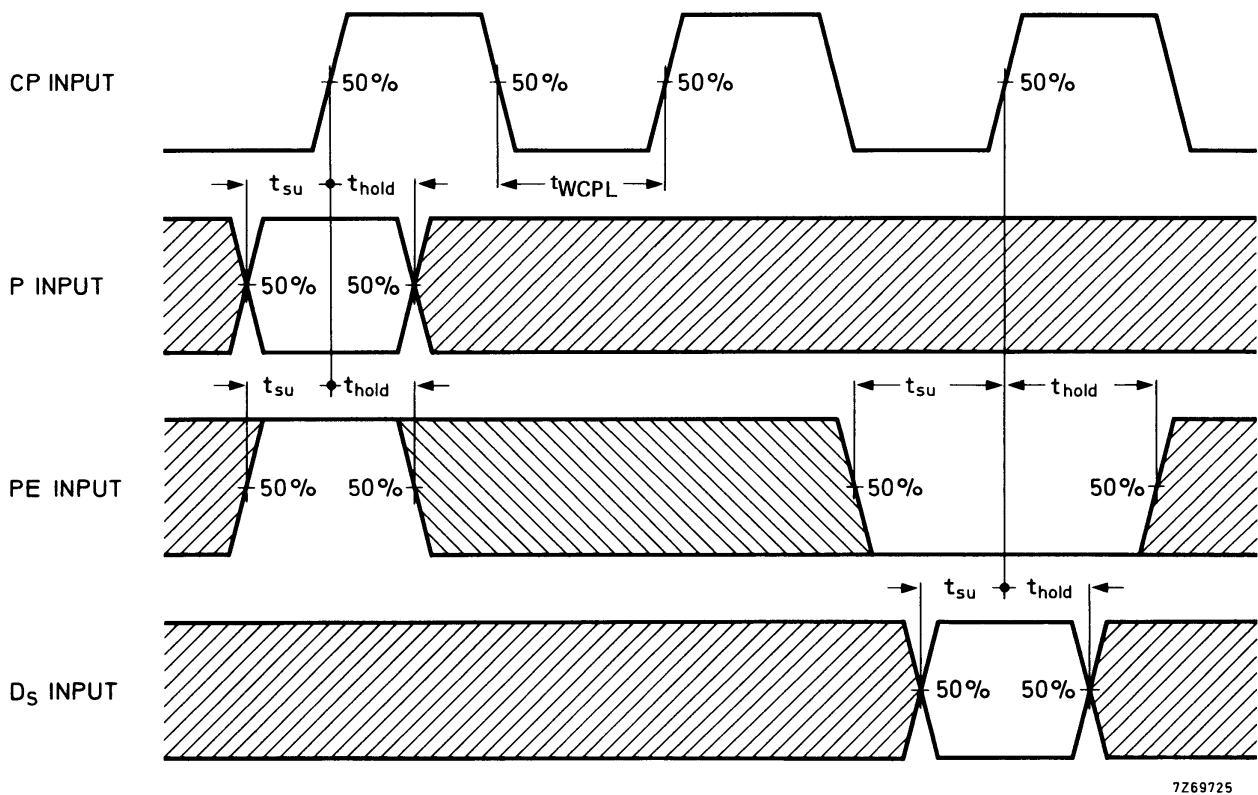
AC CHARACTERISTICS

V_{SS} = 0 V; T_{amb} = 25 °C; C_L = 50 pF; input transition times ≤ 20 ns

	V _{DD} V	SYMBOL	MIN.	TYP.	MAX.	TYPICAL EXTRAPOLATION FORMULA	
Propagation delays C _P → O _n HIGH to LOW	5	t _{PHL}		130	260	ns	103 ns + (0,55 ns/pF) C _L
	10		55	110	ns	44 ns + (0,23 ns/pF) C _L	
	15		40	80	ns	32 ns + (0,16 ns/pF) C _L	
LOW to HIGH	5	t _{PLH}		115	230	ns	88 ns + (0,55 ns/pF) C _L
	10		50	100	ns	39 ns + (0,23 ns/pF) C _L	
	15		40	80	ns	32 ns + (0,16 ns/pF) C _L	
Output transition times HIGH to LOW	5	t _{THL}		60	120	ns	10 ns + (1,0 ns/pF) C _L
	10		30	60	ns	9 ns + (0,42 ns/pF) C _L	
	15		20	40	ns	6 ns + (0,28 ns/pF) C _L	
LOW to HIGH	5	t _{TLH}		60	120	ns	10 ns + (1,0 ns/pF) C _L
	10		30	60	ns	9 ns + (0,42 ns/pF) C _L	
	15		20	40	ns	6 ns + (0,28 ns/pF) C _L	
Set-up times PE → CP	5	t _{su}	40	10		ns	see also waveforms Fig.4
	10		25	5		ns	
	15		15	0		ns	
D _S → CP	5	t _{su}	35	-5		ns	
	10		25	-5		ns	
	15		25	0		ns	
P _n → CP	5	t _{su}	35	-5		ns	
	10		25	-5		ns	
	15		25	0		ns	
Hold times PE → CP	5	t _{hold}	25	-5		ns	
	10		20	0		ns	
	15		15	0		ns	
D _S → CP	5	t _{hold}	30	15		ns	
	10		20	10		ns	
	15		15	7		ns	
P _n → CP	5	t _{hold}	30	15		ns	
	10		20	10		ns	
	15		15	7		ns	
Minimum clock pulse width; LOW	5	t _{WCPL}	70	35		ns	
	10		30	15		ns	
	15		24	12		ns	
Maximum clock pulse frequency	5	f _{max}	6	13		MHz	
	10		15	30		MHz	
	15		20	40		MHz	

8-bit static shift register

HEF4014B
MSI



7269725

Fig.4 Waveforms showing minimum clock pulse width, and set-up and hold times for PE to CP, D_S to CP, and P to CP. Set-up and hold times are shown as positive values but may be specified as negative values.

APPLICATION INFORMATION

Some examples of applications for the HEF4014B are:

- Parallel-to-serial converter
- Serial data queueing
- General purpose register



LittleDiode supplies new, hard to find or obsolete electronic components and semiconductors all over the world.

With over two million different components listed you are sure to find the part you need.

Feel free to visit us today at our online store:

LittleDiode.com

Looking forward to providing you with the best possible service.