

DATA SHEET

For a complete data sheet, please also download:

- The IC04 LOCMOS HE4000B Logic Family Specifications HEF, HEC
- The IC04 LOCMOS HE4000B Logic Package Outlines/Information HEF, HEC

HEF40162B

MSI

4-bit synchronous decade counter
with synchronous reset

Product specification
File under Integrated Circuits, IC04

January 1995

4-bit synchronous decade counter with synchronous reset

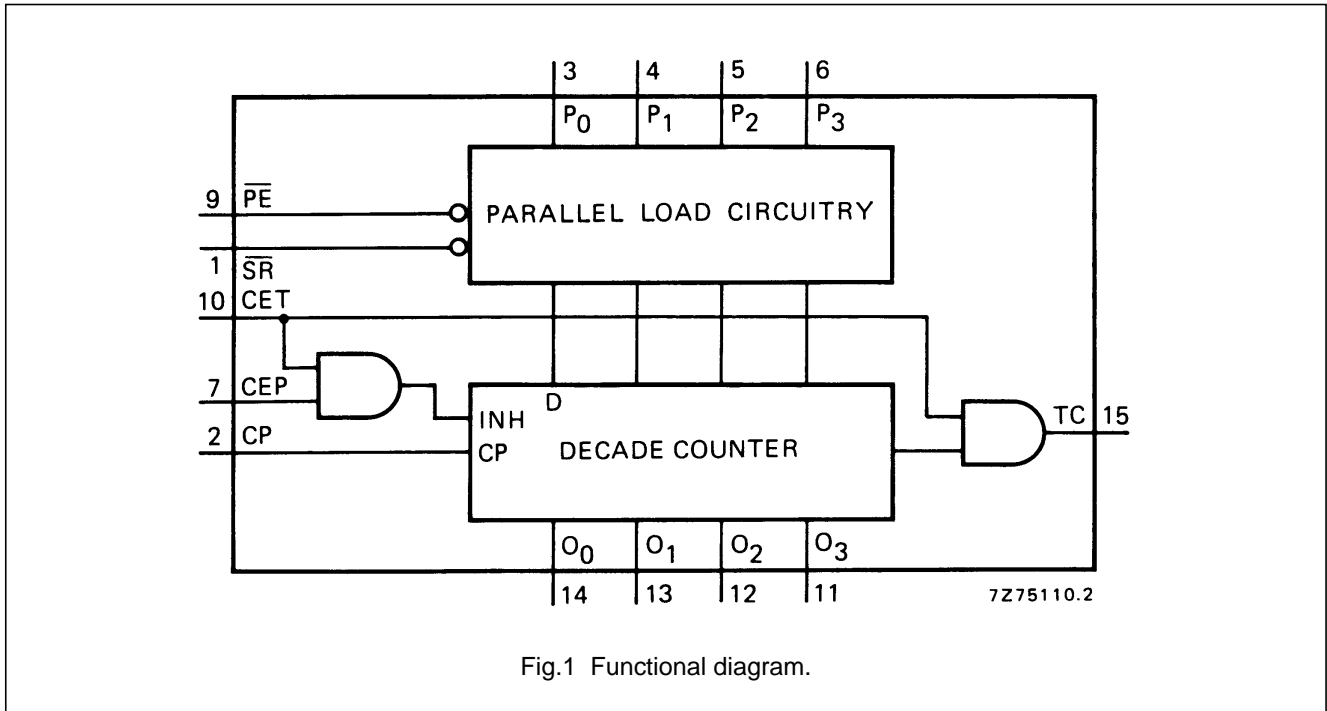
**HEF40162B
MSI**

DESCRIPTION

The HEF40162B is a fully synchronous edge-triggered 4-bit decade counter with a clock input (CP), four synchronous parallel data inputs (P₀ to P₃), four synchronous mode control inputs (parallel enable (\overline{PE}), count enable parallel (CEP), count enable trickle (CET) and synchronous reset (\overline{SR})), buffered outputs from all four bit positions (O₀ to O₃) and a terminal count output (TC).

Operation is synchronous and occurs on the LOW to HIGH transition of CP. When \overline{PE} is LOW, the next LOW to HIGH transition of CP loads data into the counter from P₀ to P₃. When \overline{PE} is HIGH, the next LOW to HIGH transition of CP

advances the counter to its next state only if both CEP and CET are HIGH; otherwise no change occurs in the state of the counter. TC is HIGH when the state of the counter is 9 (O₀ = O₃ = HIGH, O₁ = O₂ = LOW) and when CET is HIGH. A LOW on \overline{SR} sets all outputs (O₀ to O₃ and TC) LOW on the next LOW to HIGH transition of CP, independent of the state of all other synchronous mode control inputs (CEP, CET and \overline{PE}). Multistage synchronous counting is possible without additional components by using a carry look-ahead counting technique; in this case, TC is used to enable successive cascaded stages. CEP, CET, \overline{PE} and \overline{SR} must be stable only during the set-up time before the LOW to HIGH transition of CP.



FAMILY DATA, I_{DD} LIMITS category MSI

See Family Specifications

4-bit synchronous decade counter with synchronous reset

HEF40162B
MSI

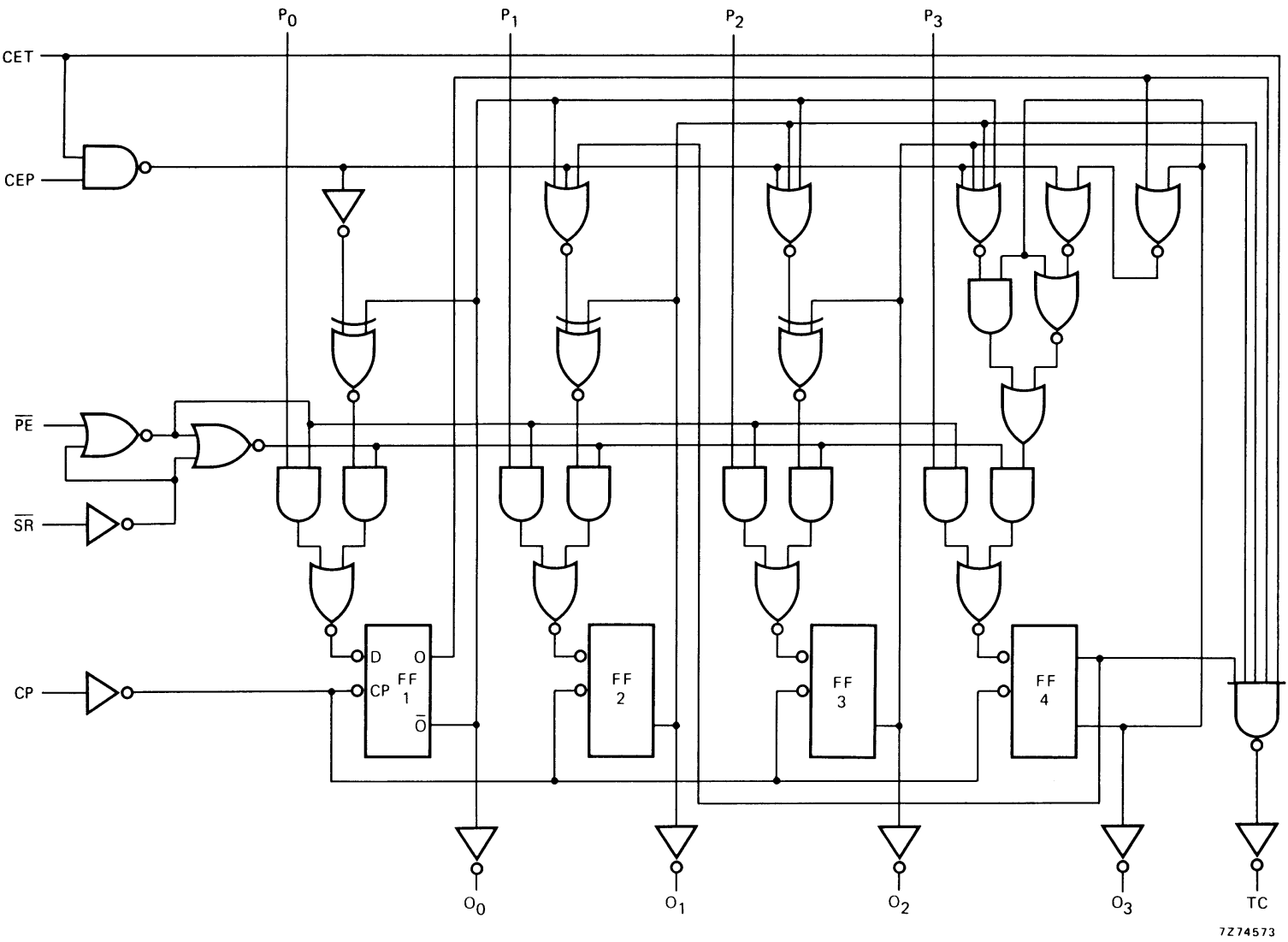


Fig.2 Logic diagram.

4-bit synchronous decade counter with synchronous reset

HEF40162B
MSI

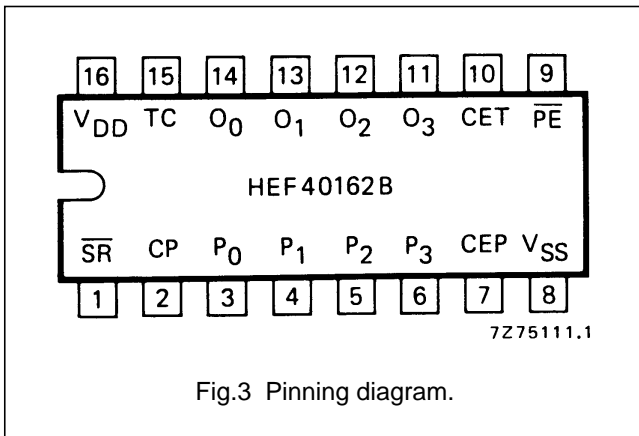


Fig.3 Pinning diagram.

PINNING

- \overline{PE} parallel enable input
- P_0 to P_3 parallel data inputs
- CEP count enable parallel input
- CET count enable trickle input
- CP clock input (LOW to HIGH, edge-triggered)
- \overline{SR} synchronous reset input (active LOW)
- O_0 to O_3 parallel outputs
- TC terminal count output

HEF40162BP(N): 16-lead DIL; plastic (SOT38-1)

HEF40162BD(F): 16-lead DIL; ceramic (cerdip) (SOT74)

HEF40162BT(D): 16-lead SO; plastic (SOT109-1)

(): Package Designator North America

SYNCHRONOUS MODE SELECTION

\overline{SR}	\overline{PE}	CEP	CET	MODE
H	L	X	X	preset
H	H	L	X	no change
H	H	X	L	no change
H	H	H	H	count
L	X	X	X	reset

Notes

1. H = HIGH state (the more positive voltage)
2. L = LOW state (the less positive voltage)
3. X = state is immaterial

TERMINAL COUNT GENERATION

CET	$(O_0 \cdot \overline{O_1} \cdot \overline{O_2} \cdot O_3)$	TC
L	L	L
L	H	L
H	L	L
H	H	H

Note

1. $TC = CET \cdot O_0 \cdot \overline{O_1} \cdot \overline{O_2} \cdot O_3$

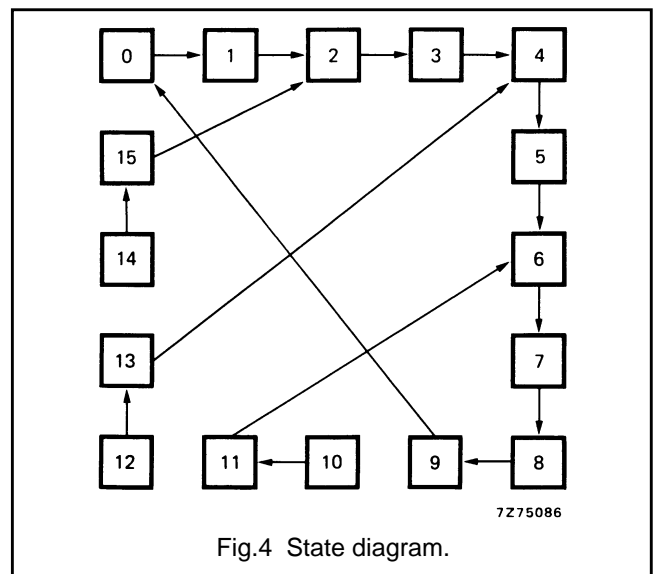


Fig.4 State diagram.

4-bit synchronous decade counter with synchronous reset

HEF40162B MSI

AC CHARACTERISTICS

$V_{SS} = 0$ V; $T_{amb} = 25$ °C; input transition times ≤ 20 ns

	V_{DD} V	TYPICAL FORMULA FOR P (μ W)	
Dynamic power dissipation per package (P)	5 10 15	$1\,200 f_i + \sum (f_o C_L) \times V_{DD}^2$ $5\,600 f_i + \sum (f_o C_L) \times V_{DD}^2$ $16\,000 f_i + \sum (f_o C_L) \times V_{DD}^2$	where f_i = input freq. (MHz) f_o = output freq. (MHz) C_L = load capacitance (pF) $\sum (f_o C_L)$ = sum of outputs V_{DD} = supply voltage (V)

AC CHARACTERISTICS

$V_{SS} = 0$ V; $T_{amb} = 25$ °C; $C_L = 50$ pF; input transition times ≤ 20 ns

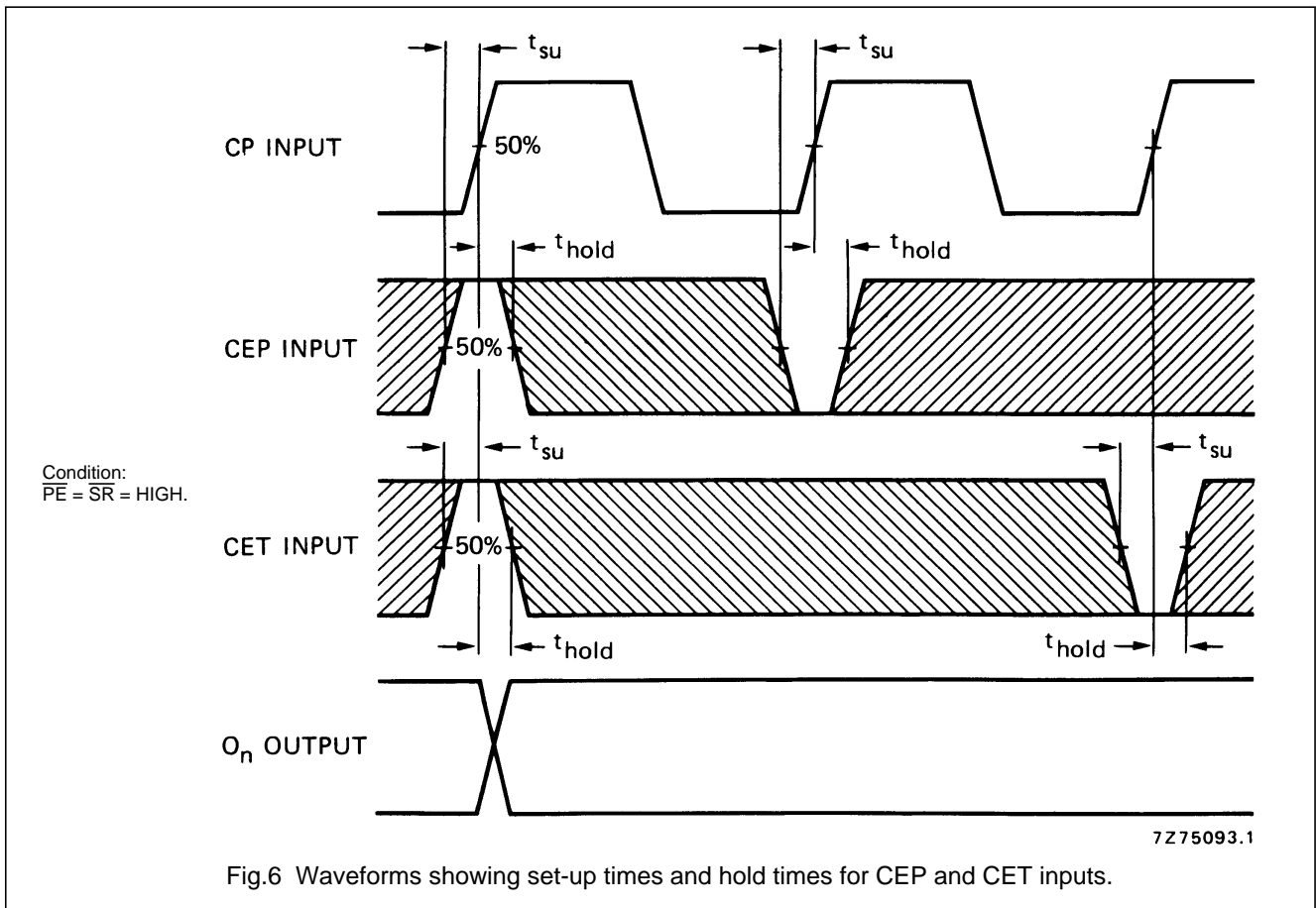
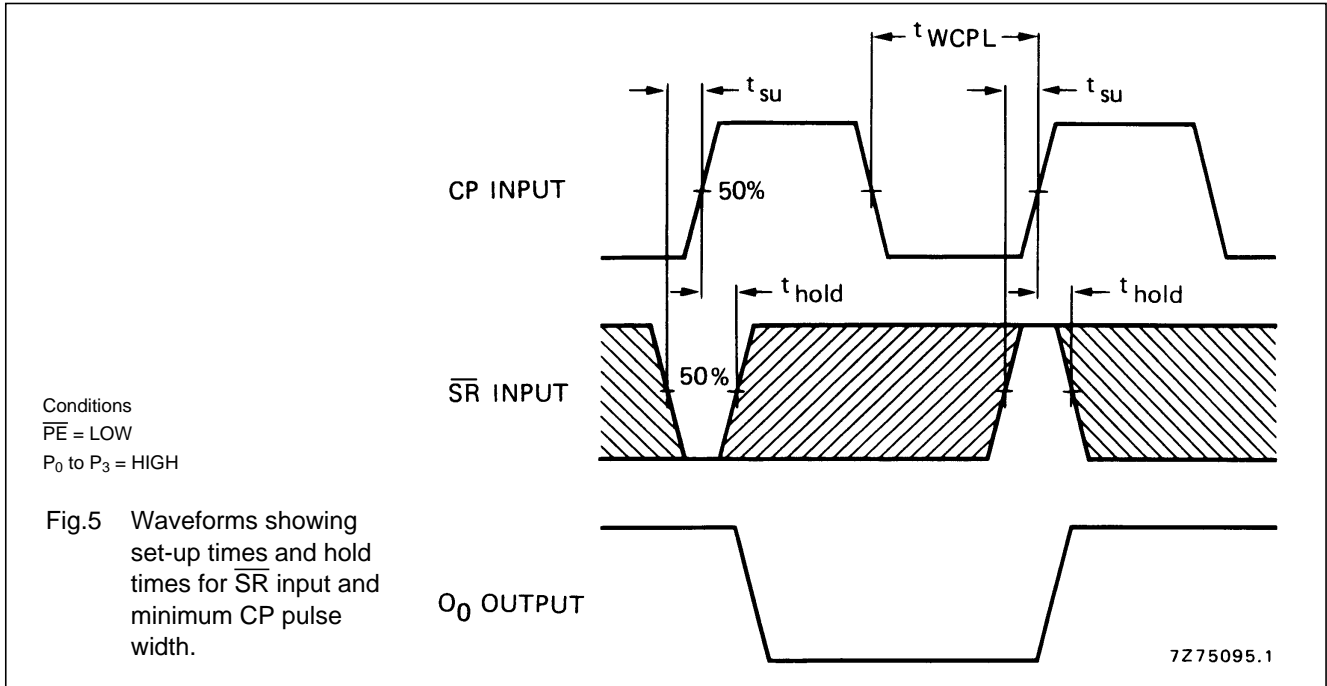
	V_{DD} V	SYMBOL	MIN.	TYP.	MAX.	TYPICAL EXTRAPOLATION FORMULA	
Propagation delays CP \rightarrow O _n HIGH to LOW	5	t_{PHL}		110	220	ns	83 ns + (0,55 ns/pF) C_L
	10		45	90	ns	34 ns + (0,23 ns/pF) C_L	
	15		30	60	ns	22 ns + (0,16 ns/pF) C_L	
LOW to HIGH	5	t_{PLH}		115	230	ns	88 ns + (0,55 ns/pF) C_L
	10		45	95	ns	34 ns + (0,23 ns/pF) C_L	
	15		35	65	ns	27 ns + (0,16 ns/pF) C_L	
CP \rightarrow TC HIGH to LOW	5	t_{PHL}		130	260	ns	103 ns + (0,55 ns/pF) C_L
	10		55	105	ns	44 ns + (0,23 ns/pF) C_L	
	15		35	75	ns	27 ns + (0,16 ns/pF) C_L	
LOW to HIGH	5	t_{PLH}		140	280	ns	113 ns + (0,55 ns/pF) C_L
	10		55	115	ns	44 ns + (0,23 ns/pF) C_L	
	15		40	80	ns	32 ns + (0,16 ns/pF) C_L	
CET \rightarrow TC HIGH to LOW	5	t_{PHL}		105	210	ns	78 ns + (0,55 ns/pF) C_L
	10		50	100	ns	39 ns + (0,23 ns/pF) C_L	
	15		35	75	ns	27 ns + (0,16 ns/pF) C_L	
LOW to HIGH	5	t_{PLH}		90	185	ns	63 ns + (0,55 ns/pF) C_L
	10		35	70	ns	24 ns + (0,23 ns/pF) C_L	
	15		25	50	ns	17 ns + (0,16 ns/pF) C_L	
Output transition times HIGH to LOW	5	t_{THL}		60	120	ns	10 ns + (1,0 ns/pF) C_L
	10		30	60	ns	9 ns + (0,42 ns/pF) C_L	
	15		20	40	ns	6 ns + (0,28 ns/pF) C_L	
LOW to HIGH	5	t_{TLH}		60	120	ns	10 ns + (1,0 ns/pF) C_L
	10		30	60	ns	9 ns + (0,42 ns/pF) C_L	
	15		20	40	ns	6 ns + (0,28 ns/pF) C_L	

4-bit synchronous decade counter with
synchronous resetHEF40162B
MSI**AC CHARACTERISTICS** $V_{SS} = 0\text{ V}$; $T_{amb} = 25\text{ }^{\circ}\text{C}$; $C_L = 50\text{ pF}$; input transition times $\leq 20\text{ ns}$

	V_{DD} V	SYMBOL	MIN.	TYP.	MAX.	
Minimum clock pulse width; LOW	5	t_{WCPL}	100	50	ns	see also waveforms Figs 5, 6, 7 and 8
	10		40	20	ns	
	15		30	15	ns	
Set-up times $P_n \rightarrow CP$	5	t_{su}	110	55	ns	
	10		40	20	ns	
	15		30	15	ns	
$\overline{PE} \rightarrow CP$	5	t_{su}	120	60	ns	
	10		40	20	ns	
	15		25	10	ns	
CEP, CET \rightarrow CP	5	t_{su}	260	130	ns	
	10		100	50	ns	
	15		70	35	ns	
$\overline{SR} \rightarrow CP$	5	t_{su}	50	25	ns	
	10		20	10	ns	
	15		15	10	ns	
Hold times $P_n \rightarrow CP$	5	t_{hold}	20	-35	ns	
	10		10	-10	ns	
	15		5	-10	ns	
$\overline{PE} \rightarrow CP$	5	t_{hold}	15	-45	ns	
	10		5	-15	ns	
	15		5	-10	ns	
CEP, CET \rightarrow CP	5	t_{hold}	25	-105	ns	
	10		15	-35	ns	
	15		10	-25	ns	
$\overline{SR} \rightarrow CP$	5	t_{hold}	15	-10	ns	
	10		5	-5	ns	
	15		5	0	ns	
Maximum clock pulse frequency	5	f_{max}	2,5	5	MHz	
	10		7	14	MHz	
	15		9	18	MHz	

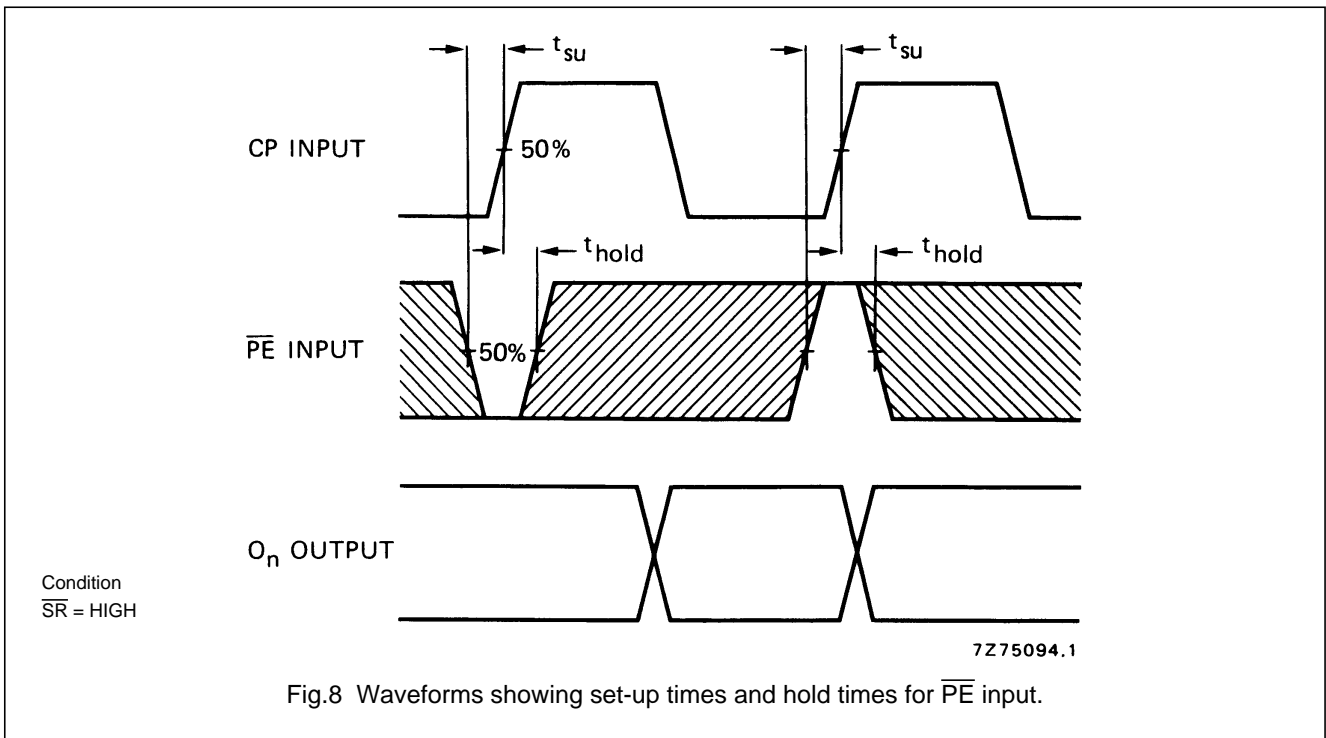
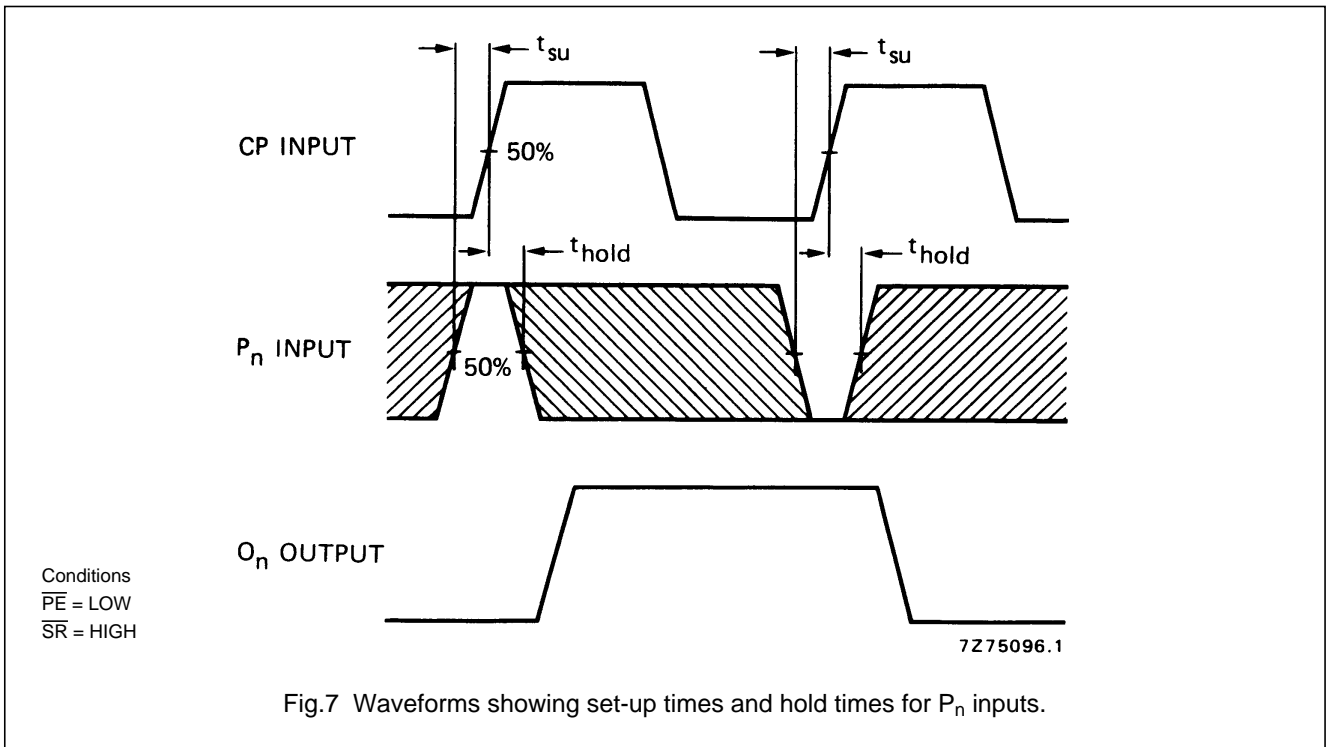
4-bit synchronous decade counter with synchronous reset

HEF40162B
MSI



4-bit synchronous decade counter with
synchronous reset

HEF40162B
MSI



Note

Set-up and hold times are shown as positive values but may be specified as negative values.

4-bit synchronous decade counter with
synchronous reset

HEF40162B
MSI

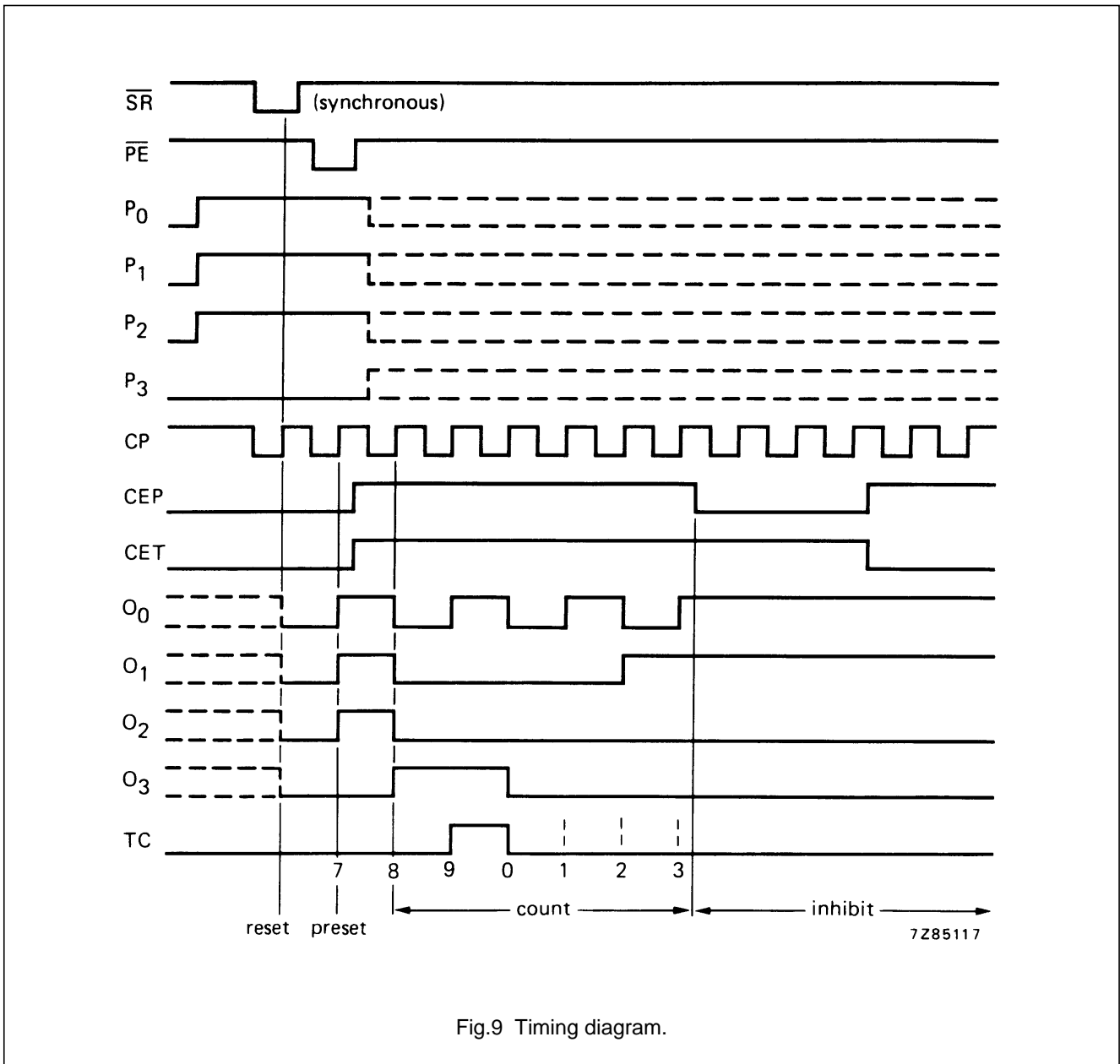


Fig.9 Timing diagram.

APPLICATION INFORMATION

An example of an application for the HEF40162B is:

- Programmable decade counter.

4-bit synchronous decade counter with synchronous reset

HEF40162B
MSI

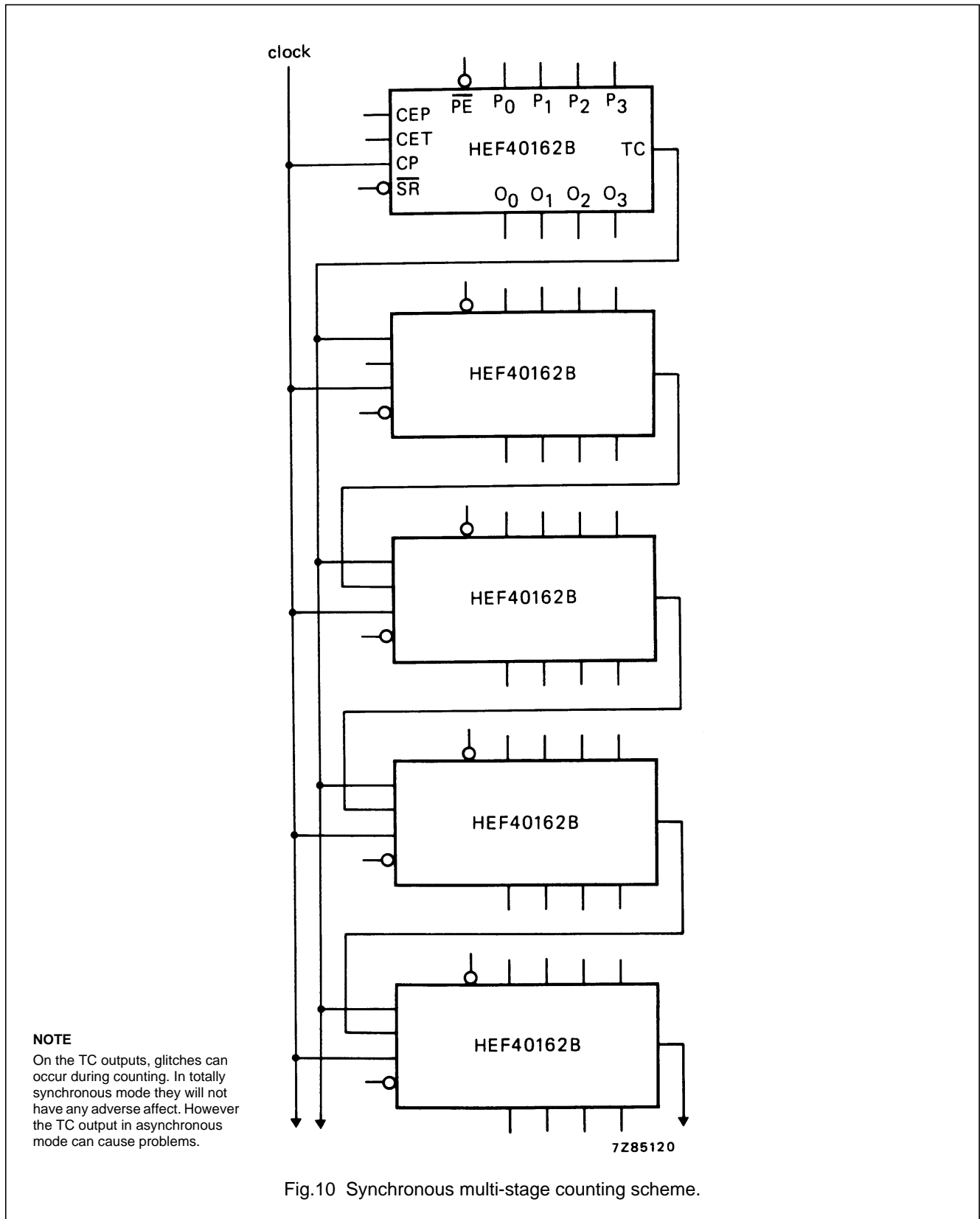


Fig.10 Synchronous multi-stage counting scheme.



LittleDiode supplies new, hard to find or obsolete electronic components and semiconductors all over the world.

With over two million different components listed you are sure to find the part you need.

Feel free to visit us today at our online store:

LittleDiode.com

Looking forward to providing you with the best possible service.