

DATA SHEET

For a complete data sheet, please also download:

- The IC04 LOCMOS HE4000B Logic Family Specifications HEF, HEC
- The IC04 LOCMOS HE4000B Logic Package Outlines/Information HEF, HEC

HEF4031B

MSI

64-stage static shift register

Product specification
File under Integrated Circuits, IC04

January 1995

64-stage static shift register

HEF4031B MSI

DESCRIPTION

The HEF4031B is an edge-triggered 64-stage static shift register with two serial data inputs (D_A , D_B), a data select input \bar{A}/B , a clock input (CP), a buffered clock output (CO), and buffered outputs from the 64th bit position (O_{63} , \bar{O}_{63}). The output O_{63} is capable of driving one TTL load.

Data from D_A or D_B , as determined by the state of \bar{A}/B , is shifted into the first shift register position and all the data in

the register is shifted one position to the right on the LOW to HIGH transition of CP. D_A is selected by a LOW, and D_B by a HIGH on \bar{A}/B . Registers can be cascaded either by connecting all CP inputs together or by driving CP of the most right-hand register with the system clock and connecting CO to CP of the preceding register. When the second technique is used in the recirculating mode, a flip-flop must be used to store O_{63} of the most right-hand register until the most left-hand register is clocked.

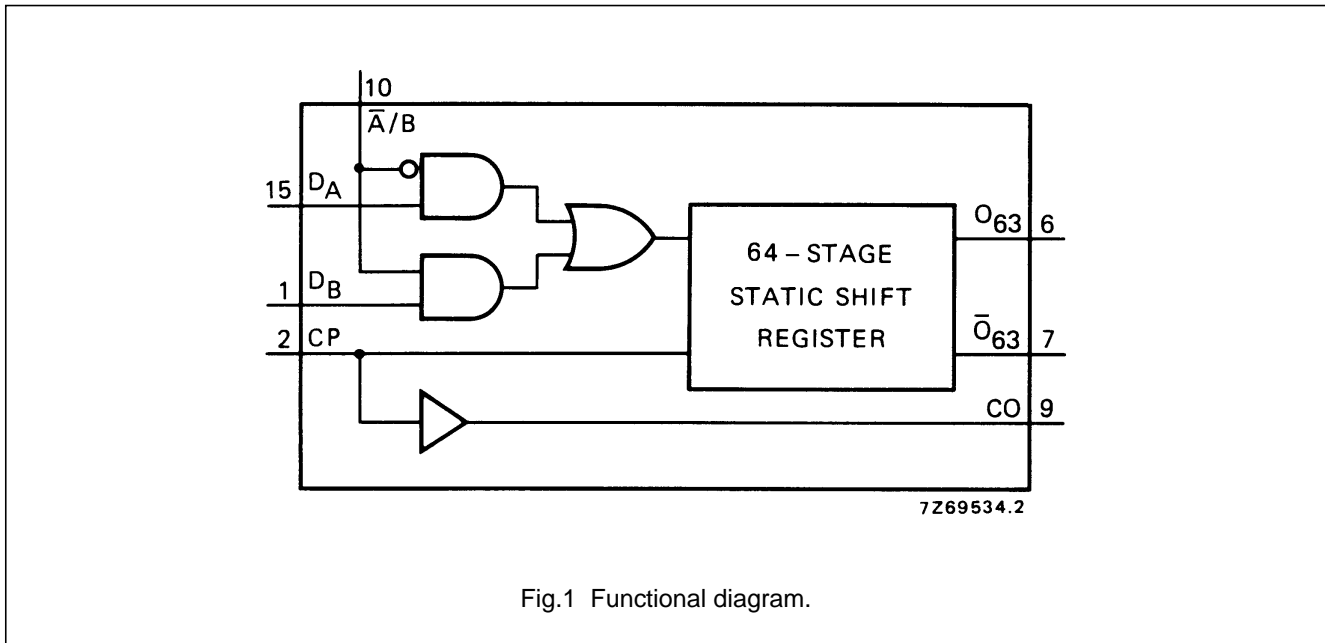


Fig.1 Functional diagram.

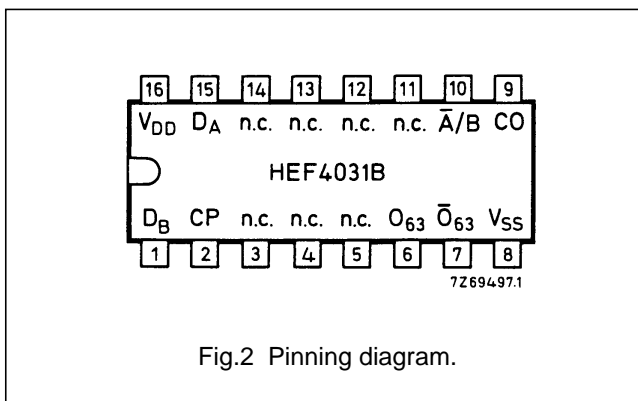


Fig.2 Pinning diagram.

PINNING

- D_A , D_B data inputs
- \bar{A}/B data select input
- CP clock input (LOW to HIGH edge-triggered)
- CO buffered clock output
- O_{63} buffered output from the 64th stage
- \bar{O}_{63} complementary buffered output from the 64th stage

FAMILY DATA, I_{DD} LIMITS category MSI

See Family Specifications

- HEF4031BP(N): 16-lead DIL; plastic (SOT38-1)
- HEF4031BD(F): 16-lead DIL; ceramic (cerdip) (SOT74)
- HEF4031BT(D): 16-lead SO; plastic (SOT109-1)
- (): Package Designator North America

64-stage static shift register

HEF4031B
MSI

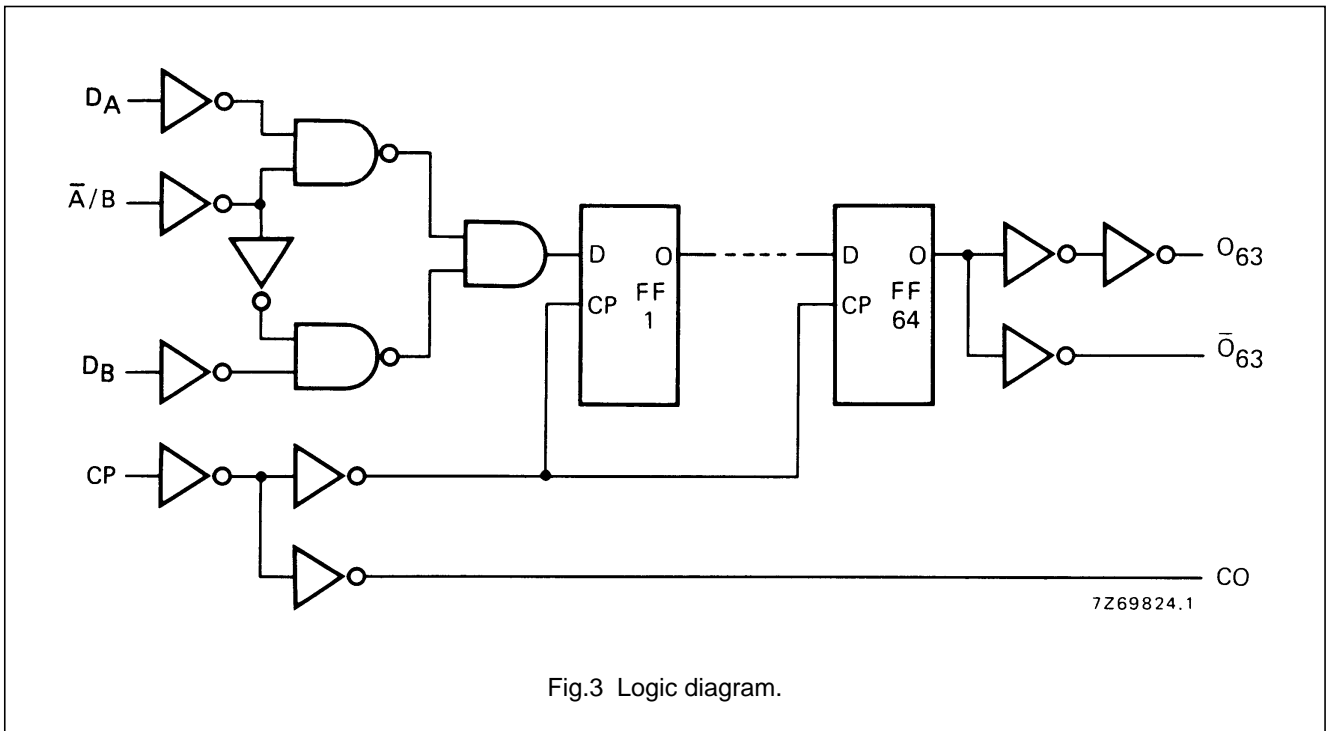


Fig.3 Logic diagram.

DC CHARACTERISTICS

$V_{SS} = 0\text{ V}$; $V_I = V_{SS}$ or V_{DD}

	V_{DD} V	V_{OH} V	V_{OL} V	SYMBOL	$T_{amb} (°C)$						
					-40		+ 25		+ 85		
					MIN.	MAX.	MIN.	MAX.	MIN.	MAX.	
Output (source) current HIGH; O_{63}	5	4, 6			1,0	0,85	0,65				mA
	10	9,5		$-I_{OH}$	3,0	2,5	2,0				mA
	15	13,5			10,0	8,5	6,5				mA
Output (sink) current LOW; O_{63}	5	2,5		$-I_{OH}$	3,0	2,5	2,0				mA
	4,75		0,4		2,7	2,3	1,8				mA
	10		0,5	I_{OL}	9,5	8,0	6,3				mA
	15		1,5		24,0	20,0	16,0				mA

64-stage static shift register

HEF4031B
MSI**AC CHARACTERISTICS** $V_{SS} = 0\text{ V}$; $T_{amb} = 25\text{ }^{\circ}\text{C}$; $C_L = 50\text{ pF}$; input transition times $\leq 20\text{ ns}$

	V_{DD} V	SYMBOL	MIN.	TYP.	MAX.	TYPICAL EXTRAPOLATION FORMULA					
Propagation delays	5	t_{PHL}			ns						
							CP \rightarrow O_{63}	180	360	167 ns + (0,26 ns/pF) C_L	
							HIGH to LOW	65	130	57 ns + (0,16 ns/pF) C_L	
	5	t_{PLH}			ns						
								LOW to HIGH	170	340	148 ns + (0,45 ns/pF) C_L
									65	130	56 ns + (0,19 ns/pF) C_L
	10	t_{PHL}			ns						
								HIGH to LOW	45	90	40 ns + (0,11 ns/pF) C_L
									45	90	39 ns + (0,13 ns/pF) C_L
	15	t_{PLH}			ns						
								LOW to HIGH	190	380	163 ns + (0,55 ns/pF) C_L
									75	150	64 ns + (0,23 ns/pF) C_L
5	t_{PHL}			ns							
							HIGH to LOW	190	380	163 ns + (0,55 ns/pF) C_L	
								75	150	64 ns + (0,23 ns/pF) C_L	
10	t_{PLH}			ns							
							LOW to HIGH	50	100	42 ns + (0,16 ns/pF) C_L	
								50	100	42 ns + (0,16 ns/pF) C_L	
15	t_{PHL}			ns							
							CP \rightarrow CO	70	140	43 ns + (0,55 ns/pF) C_L	
							HIGH to LOW	35	70	24 ns + (0,23 ns/pF) C_L	
5	t_{PLH}			ns							
							LOW to HIGH	25	50	17 ns + (0,16 ns/pF) C_L	
								25	50	17 ns + (0,16 ns/pF) C_L	
Output transition times; O_{63}	5	t_{THL}			ns						
							HIGH to LOW	25	50	5 ns + (0,40 ns/pF) C_L	
								12	24	3 ns + (0,18 ns/pF) C_L	
	10	t_{TLH}			ns						
								LOW to HIGH	40	80	8 ns + (0,65 ns/pF) C_L
									20	40	5 ns + (0,30 ns/pF) C_L
15	t_{THL}			ns							
							HIGH to LOW	8	16	2 ns + (0,13 ns/pF) C_L	
								13	26	3 ns + (0,20 ns/pF) C_L	
Output transition times; \overline{O}_{63} , CO	5	t_{THL}			ns						
							HIGH to LOW	60	120	10 ns + (1,0 ns/pF) C_L	
								30	60	9 ns + (0,42 ns/pF) C_L	
	10	t_{TLH}			ns						
								LOW to HIGH	20	40	6 ns + (0,28 ns/pF) C_L
									20	40	6 ns + (0,28 ns/pF) C_L
15	t_{THL}			ns							
							HIGH to LOW	60	120	10 ns + (1,0 ns/pF) C_L	
								30	60	9 ns + (0,42 ns/pF) C_L	
15	t_{TLH}			ns							
							LOW to HIGH	20	40	6 ns + (0,28 ns/pF) C_L	
								20	40	6 ns + (0,28 ns/pF) C_L	

64-stage static shift register

HEF4031B
MSI

AC CHARACTERISTICS

V_{SS} = 0 V; T_{amb} = 25 °C; C_L = 50 pF; input transition times ≤ 20 ns

	V _{DD} V	SYMBOL	MIN.	TYP.	MAX.	TYPICAL EXTRAPOLATION FORMULA
Set-up times D _A , D _B → CP A̅/B → CP	5	t _{su}	25	0	ns	see also waveforms Fig.4
	10		25	-5	ns	
	15		10	-10	ns	
	5	t _{su}	30	10	ns	
	10		15	0	ns	
	15		10	-5	ns	
Hold times D _A , D _B → CP A̅/B → CP	5	t _{hold}	40	10	ns	
	10		40	10	ns	
	15		40	10	ns	
	5	t _{hold}	40	10	ns	
	10		40	10	ns	
	15		40	10	ns	
Minimum clock pulse width; LOW	5	t _{WCPL}	180	90	ns	
	10		70	35	ns	
	15		50	25	ns	
Maximum clock pulse frequency	5	f _{max}	2,5	5	MHz	
	10		7	14	MHz	
	15		10	20	MHz	

AC CHARACTERISTICS

V_{SS} = 0 V; T_{amb} = 25 °C; input transition times ≤ 20 ns

	V _{DD} V	TYPICAL FORMULA FOR P (μW)	
Dynamic power dissipation per package (P)	5	4000 f _i + ∑ (f _o C _L) × V _{DD} ²	where f _i = input freq. (MHz) f _o = output freq. (MHz) C _L = load capacitance (pF) ∑ (f _o C _L) = sum of outputs V _{DD} = supply voltage (V)
	10	19 000 f _i + ∑ (f _o C _L) × V _{DD} ²	
	15	54 000 f _i + ∑ (f _o C _L) × V _{DD} ²	

64-stage static shift register

HEF4031B
MSI

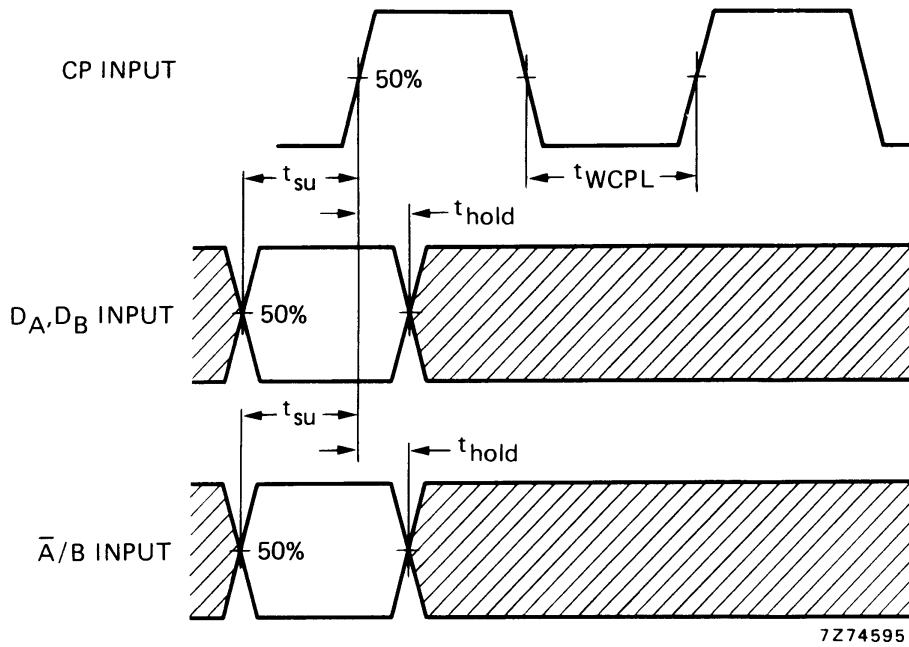


Fig.4 Waveforms showing minimum clock pulse width, set-up and hold times for D_A, D_B to CP and \bar{A}/B to CP. Set-up and hold times are shown as positive values but may be specified as negative values.

APPLICATION INFORMATION

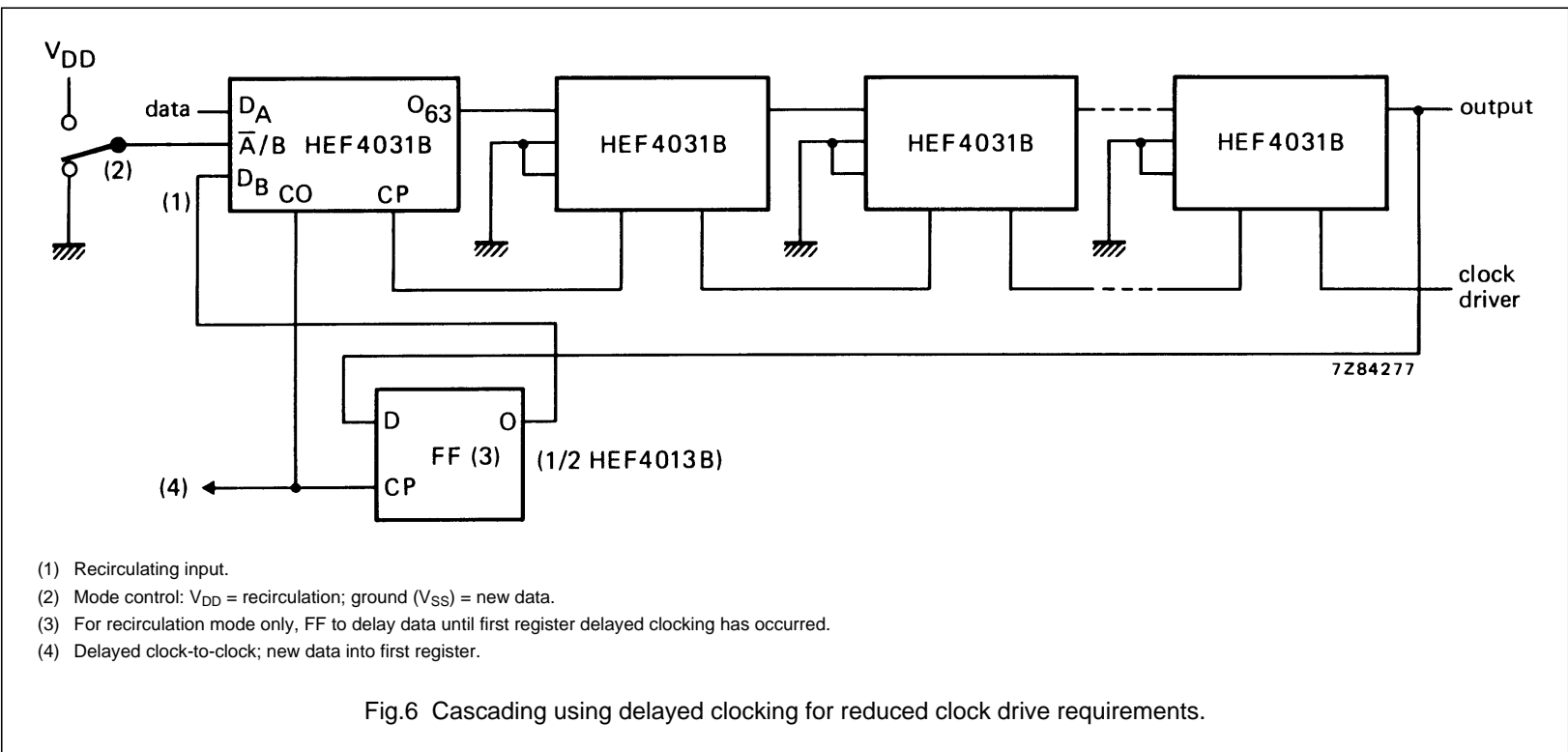
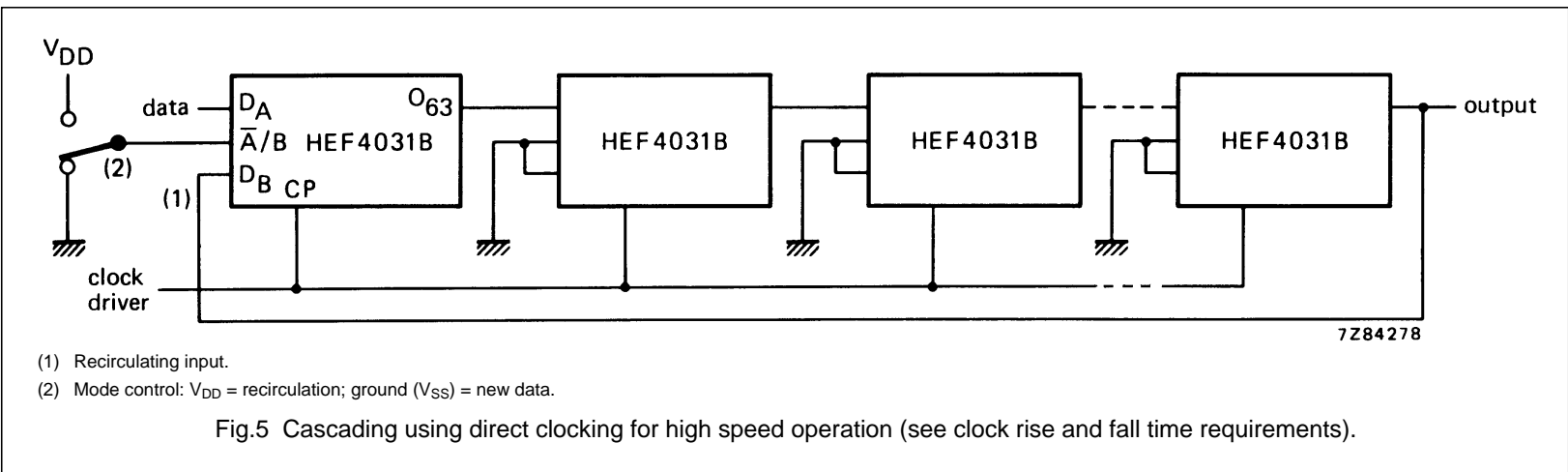
An example of an application for the HEF4031B is:

- Serial shift register.

64-stage static shift register

HEF4031B
MSI

APPLICATION INFORMATION





LittleDiode supplies new, hard to find or obsolete electronic components and semiconductors all over the world.

With over two million different components listed you are sure to find the part you need.

Feel free to visit us today at our online store:

LittleDiode.com

Looking forward to providing you with the best possible service.