

**Power Rectifier/Power Surge Suppressor**

The HRP2540 (TA9673) is a high forward current, high reverse energy controlled avalanche power rectifier. It uses an ion-implanted planar epitaxial construction. This device was designed for use as the output rectifier in the three phase six diode bridge assembly of an automotive alternator system. It provides "Load Dump" suppression by virtue of its precisely controlled reverse avalanche breakdown voltage. When used singly it can also serve as a transient suppressor for an automotive accessory. This device can provide forward voltage clamping and reverse voltage bypassing. This will protect the accessory from L-C inductive spikes and/or field decay transients.

**Ordering Information**

**PACKAGING AVAILABILITY**

PART NUMBER	PACKAGE	BRAND
HRP2540	TO-220AB	HRP2540

NOTE: When ordering, use the entire part number.

**Features**

- Low Forward Voltage Drop (1.1V Max at 100A)
- High Reverse Energy Capability
- Controlled Maximum Avalanche Voltage (40V Max at 40A)

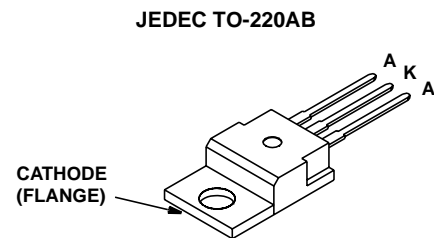
**Applications**

- Alternator Rectification
- Accessory Load Dump Protector
- High Current Forward Voltage Clamp

**Symbol**



**Package**



**Absolute Maximum Ratings**  $T_C = +25^{\circ}C$ , Unless Otherwise Specified

	HRP2540	UNITS
DC Peak Repetitive Reverse Voltage..... $V_{RRM}$	23	V
RMS Forward Current ( $T_C = 125^{\circ}C$ ) ..... $I_{RMS}$	25	A
Average Rectified Forward Current (Single Phase Resistive Load $T_C = 125^{\circ}C$ ) ..... $I_O$	22	A
Non-Repetitive Peak Forward Surge Current..... $I_{FSM}$ (Surge Applied at Rated Load Conditions, Halfwave, Single Phase 60Hz)	600	A
Power Dissipation..... $P_T$		
At $T_C = 25^{\circ}C$ .....	100	W
Derated above $25^{\circ}C$ .....	0.8	W/ $^{\circ}C$
Operating and Storage Junction Temperature Range ..... $T_{STG}, T_J$	-65 to 150	$^{\circ}C$

**Electrical Specifications**  $T_C = 25^\circ\text{C}$ , Unless Otherwise Specified

PARAMETERS	SYMBOL	TEST CONDITIONS	MIN	MAX	UNITS
Forward Voltage Drop (Note 1)	$V_F$	$I_F = 100\text{A}$	-	1.1	V
Reverse Current	$I_R$	$V_R = 20\text{V}$	-	1	mA
Reverse Current $T_C = 100^\circ\text{C}$	$I_R$	$V_R = 20\text{V}$	-	50	mA
Breakdown Voltage	$B_V$	$I_R = 100\text{mA}$	24	32	V
Breakdown Voltage (Note 2) $T_C = 85^\circ\text{C}$	$BV_M$	$I_R = 40\text{A}$	-	40	V
Thermal Resistance	-	$R_{\theta JC}$	-	1.25	$^\circ\text{C}/\text{W}$

NOTES:

1. Pulse Test: Pulse width  $<300\mu\text{s}$  duty cycle  $<2.0\%$ .
2. Pulse Test: Pulse width  $<10\text{ms}$ , duty cycle  $<2.0\%$ .

**Typical Performance Curves**

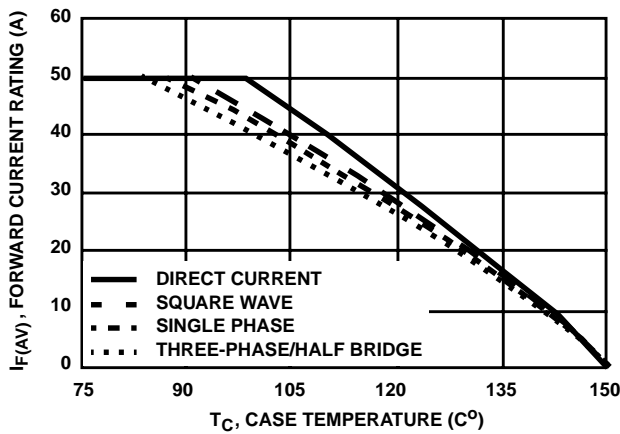


FIGURE 1. MAXIMUM FORWARD CURRENT vs TEMPERATURE DERATING CURVE

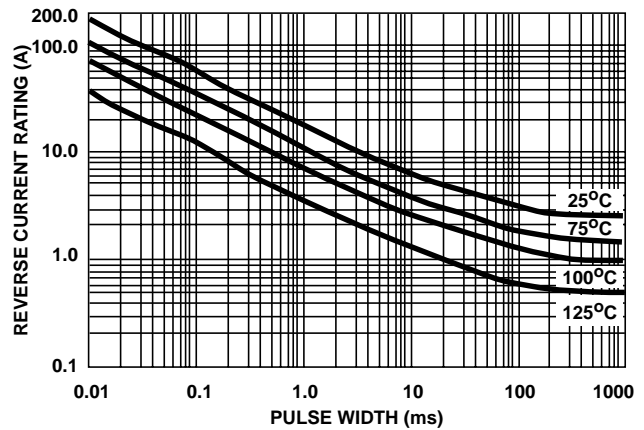


FIGURE 2. MAXIMUM REVERSE CURRENT vs PULSE WIDTH

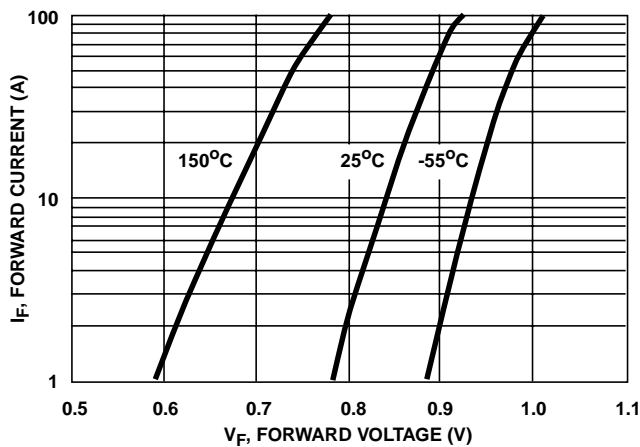


FIGURE 3. TYPICAL FORWARD CURRENT vs FORWARD VOLTAGE

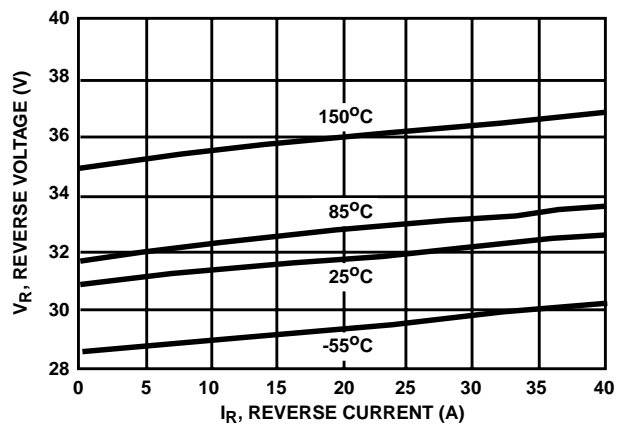


FIGURE 4. TYPICAL REVERSE VOLTAGE vs REVERSE CURRENT

All Intersil semiconductor products are manufactured, assembled and tested under ISO9000 quality systems certification.

*Intersil semiconductor products are sold by description only. Intersil Corporation reserves the right to make changes in circuit design and/or specifications at any time without notice. Accordingly, the reader is cautioned to verify that data sheets are current before placing orders. Information furnished by Intersil is believed to be accurate and reliable. However, no responsibility is assumed by Intersil or its subsidiaries for its use; nor for any infringements of patents or other rights of third parties which may result from its use. No license is granted by implication or otherwise under any patent or patent rights of Intersil or its subsidiaries.*

For information regarding Intersil Corporation and its products, see web site [www.intersil.com](http://www.intersil.com)

Typical Performance Curves (Continued)

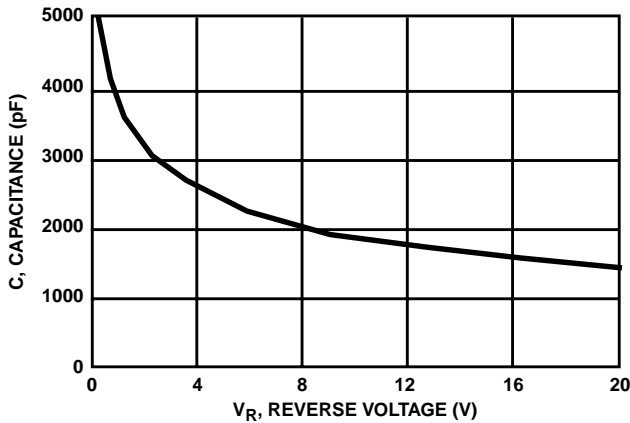


FIGURE 5. TYPICAL CAPACITANCE vs REVERSE VOLTAGE

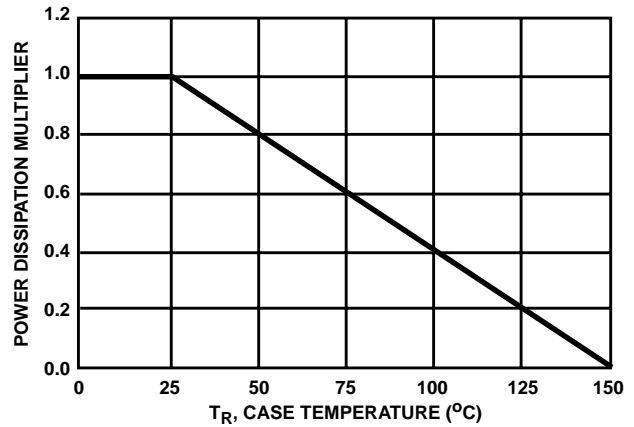


FIGURE 6. NORMALIZED POWER DISSIPATION vs TEMPERATURE DERATING CURVE

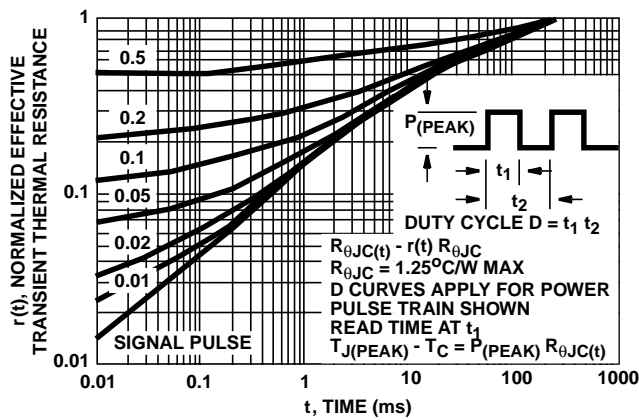
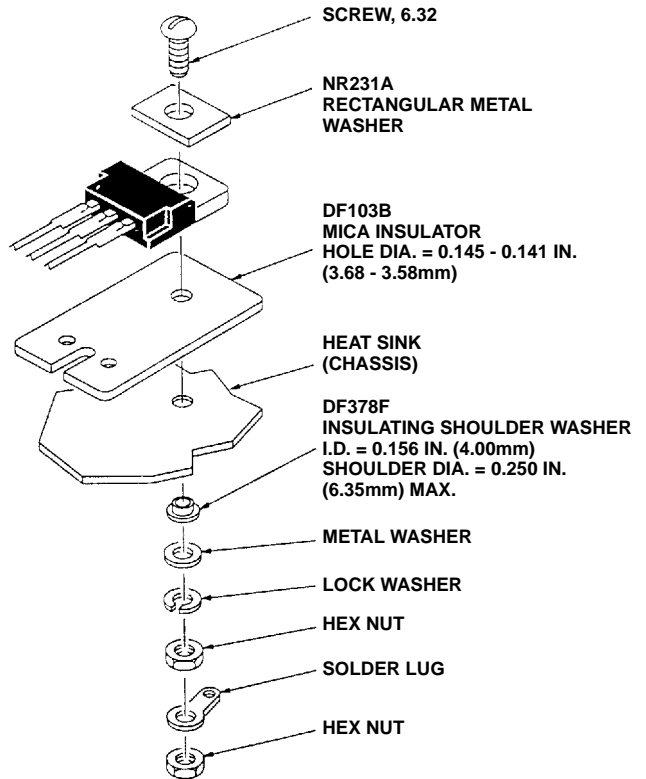


FIGURE 7. TRANSIENT THERMAL RESISTANCE

Exploded View

SUGGESTED MOUNTING HARDWARE FOR JEDEC TO-220AB



NOTE: Maximum torque applied to mounting flange is 8 in. lb. (0.09kgf m).

This datasheet has been downloaded from:

[www.DatasheetCatalog.com](http://www.DatasheetCatalog.com)

Datasheets for electronic components.



LittleDiode supplies new, hard to find or obsolete electronic components and semiconductors all over the world.

With over two million different components listed you are sure to find the part you need.

Feel free to visit us today at our online store:

[LittleDiode.com](http://LittleDiode.com)

Looking forward to providing you with the best possible service.