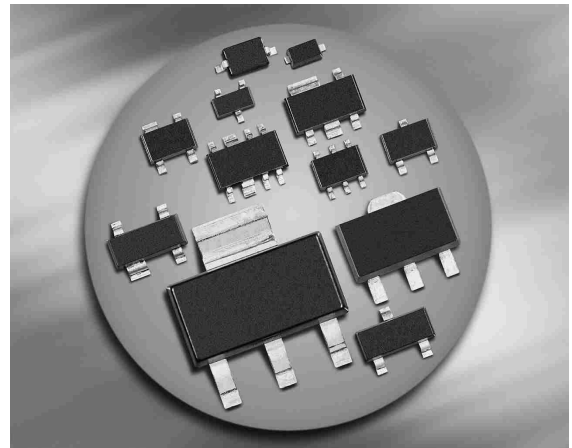
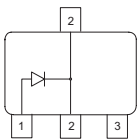


**Silicon Switching Diodes**

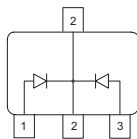
- Switching applications
- High breakdown voltage



**BAW78D**



**BAW79D**



Type	Package	Configuration	Marking
BAW78D	SOT89	single	GD
BAW79D	SOT89	common cathode	GH

**Maximum Ratings** at  $T_A = 25^\circ\text{C}$ , unless otherwise specified

Parameter	Symbol	Value	Unit
Diode reverse voltage	$V_R$	400	V
Peak reverse voltage	$V_{RM}$	400	
Forward current	$I_F$	1	A
Peak forward current	$I_{FM}$	1	
Surge forward current, $t = 1 \mu\text{s}$	$I_{FS}$	10	
Total power dissipation	$P_{tot}$		W
BAW78D, $T_S \leq 125^\circ\text{C}$		1	
BAW79D, $T_S \leq 115^\circ\text{C}$		1	
Junction temperature	$T_j$	150	$^\circ\text{C}$
Storage temperature	$T_{stg}$	-65 ... 150	

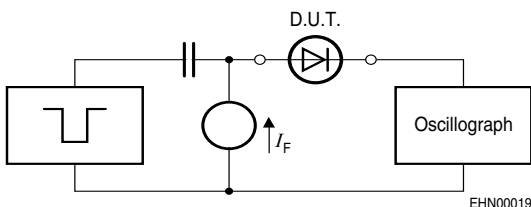
**Thermal Resistance**

Parameter	Symbol	Value	Unit
Junction - soldering point <sup>1)</sup>	$R_{thJS}$		K/W
BAW78D		$\leq 25$	
BAW79D		$\leq 35$	

<sup>1</sup>For calculation of  $R_{thJA}$  please refer to Application Note Thermal Resistance

**Electrical Characteristics at  $T_A = 25^\circ\text{C}$ , unless otherwise specified**

Parameter	Symbol	Values			Unit
		min.	typ.	max.	
<b>DC Characteristics</b>					
Breakdown voltage $I_{(BR)} = 100 \mu\text{A}$	$V_{(BR)}$	400	-	-	V
Reverse current $V_R = 400 \text{ V}$ $V_R = 400 \text{ V}, T_A = 150^\circ\text{C}$	$I_R$	-	-	1 50	$\mu\text{A}$
Forward voltage $I_F = 1 \text{ A}$ $I_F = 2 \text{ A}$	$V_F$	-	-	1.6 2	V
<b>AC Characteristics</b>					
Diode capacitance $V_R = 0 \text{ V}, f = 1 \text{ MHz}$	$C_T$	-	10	-	pF
Reverse recovery time $I_F = 200\text{mA}, I_R = 200\text{mA}$ , measured at $I_R = 20\text{mA}$ $R_L = 100\Omega$	$t_{rr}$	-	1	-	$\mu\text{s}$

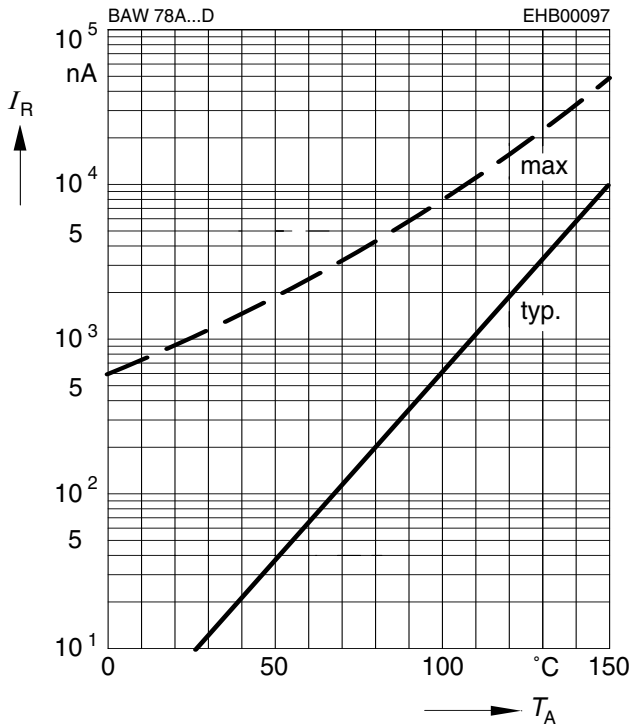
**Test circuit for reverse recovery time**


Puls generator:  $t_p = 10\mu\text{s}$ ,  $D = 0.05$ ,  
 $t_r = 0.6\text{ns}$ ,  $R_i = 50\Omega$

Oscillograp:  $R = 50\Omega$ ,  $t_r = 0.35\text{ns}$   
 $C \leq 1\text{pF}$

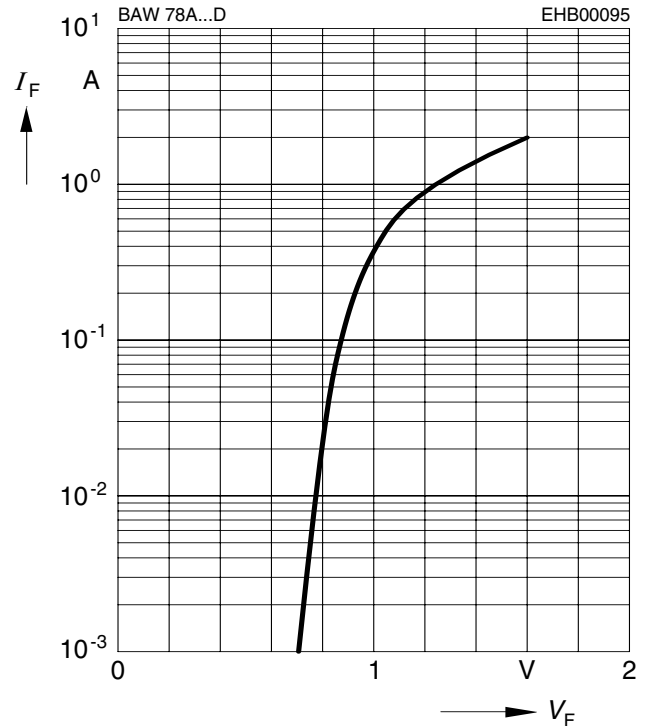
Reverse current  $I_R = f(T_A)$

$V_R = 400V$

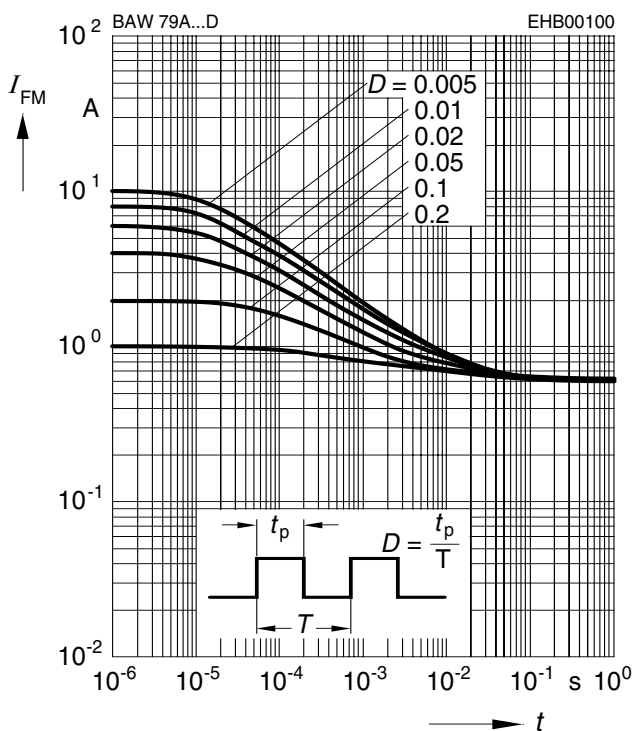


Forward current  $I_F = f(V_F)$

$T_A = 25^\circ C$

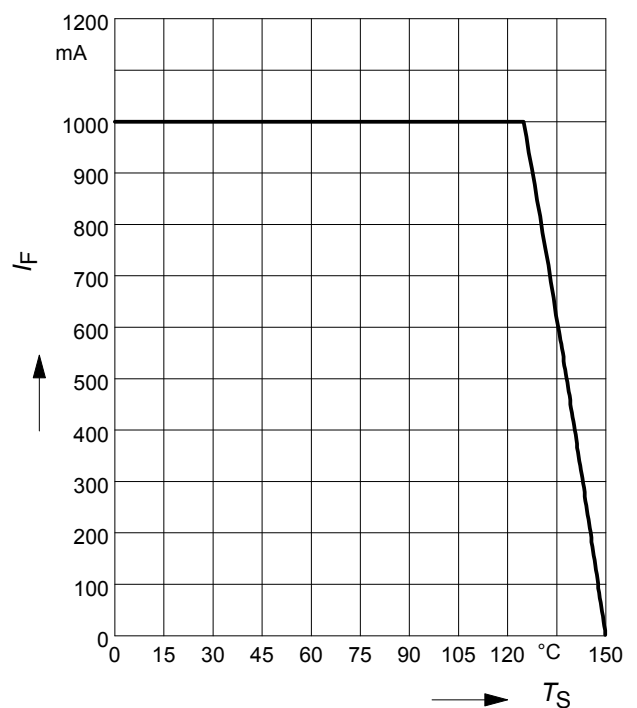


Peak forward current  $I_{FM} = f(t_p)$



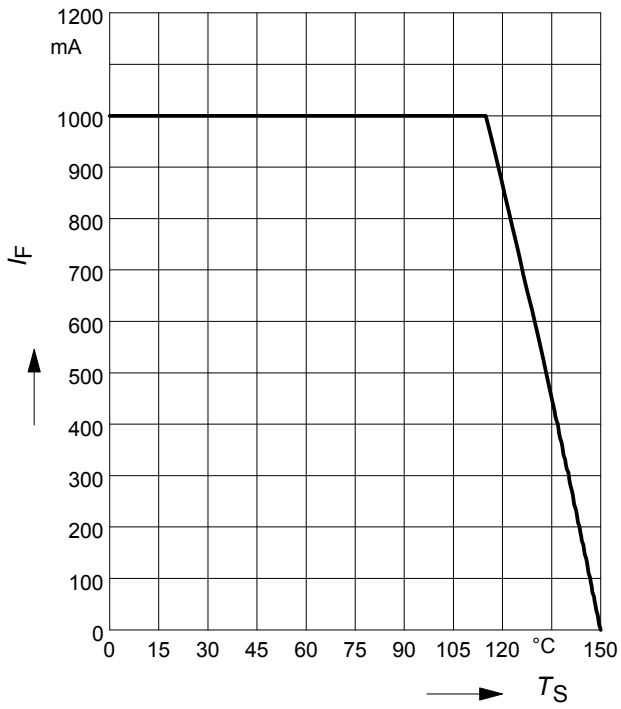
Forward current  $I_F = f(T_S)$

BAW78D



**Forward current  $I_F = f(T_S)$**

BAW79D





LittleDiode supplies new, hard to find or obsolete electronic components and semiconductors all over the world.

With over two million different components listed you are sure to find the part you need.

Feel free to visit us today at our online store:

**[LittleDiode.com](http://LittleDiode.com)**

Looking forward to providing you with the best possible service.