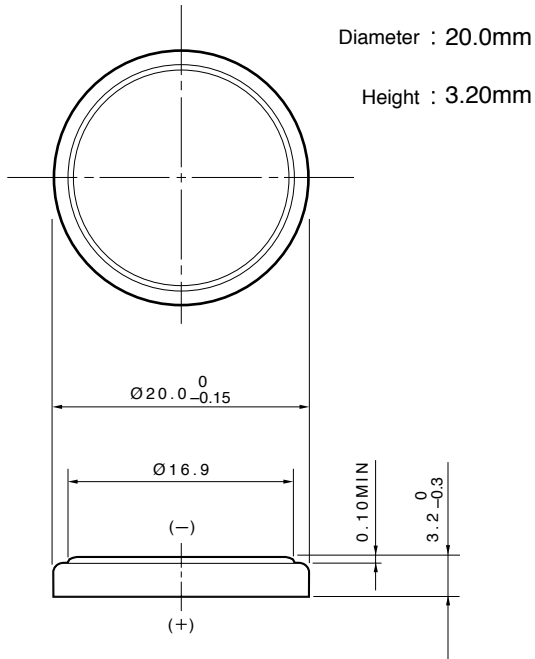


Lithium Manganese Dioxide Battery **CR2032**

■ **Dimensions (mm)**



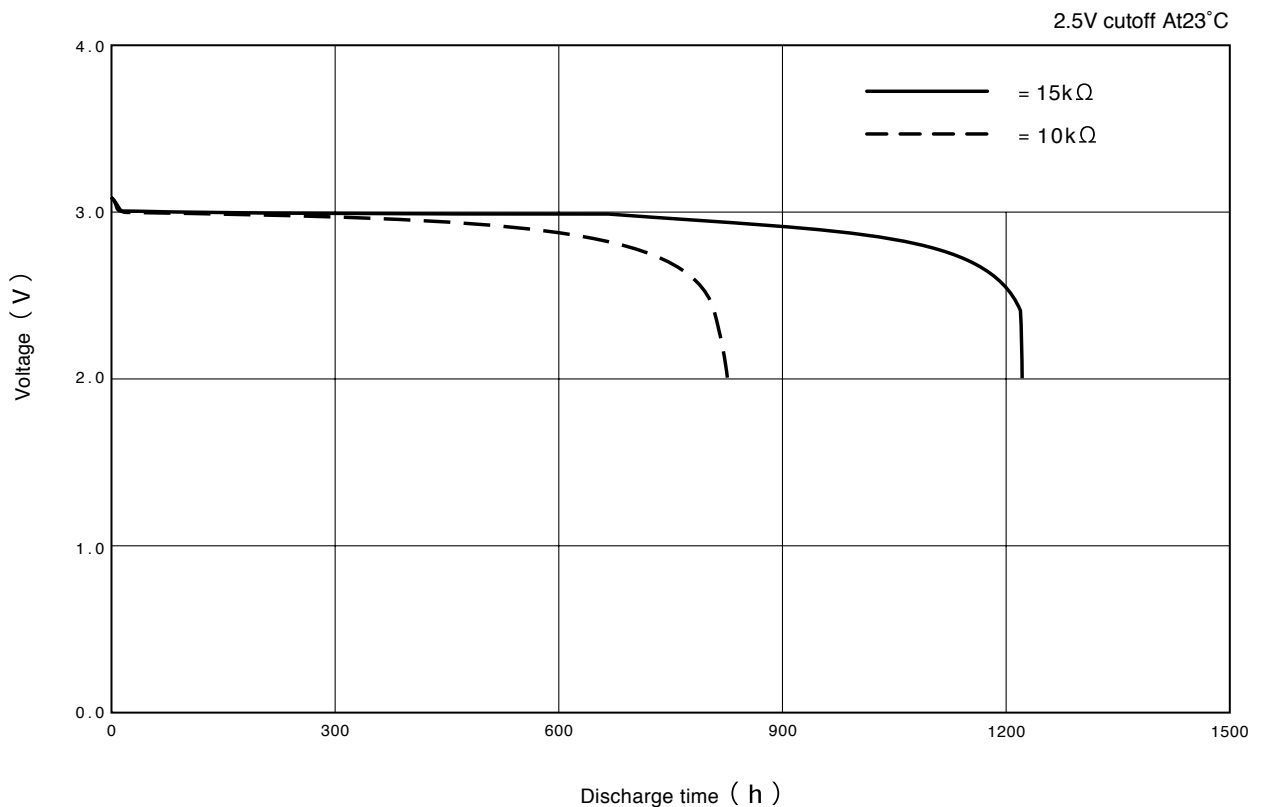
■ **Specifications**

Nominal Voltage	3V
Nominal Capacity (2.5V cutoff)	220mAh
Recommended Continuous Drain	0.3mA
Recommended Pulse Drain	12mA
Weight	3.2g

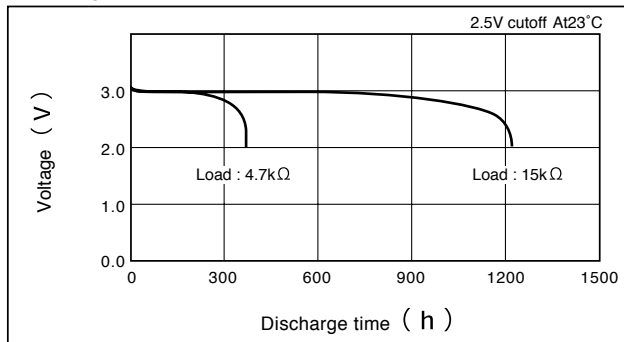
Applications

- Electronic Watch or Clock ● Card Radio
- Remote Controller ● Electronic Game, Toy
- Memory Back-up Power Source for SRAM or Real Time Clock (RTC)

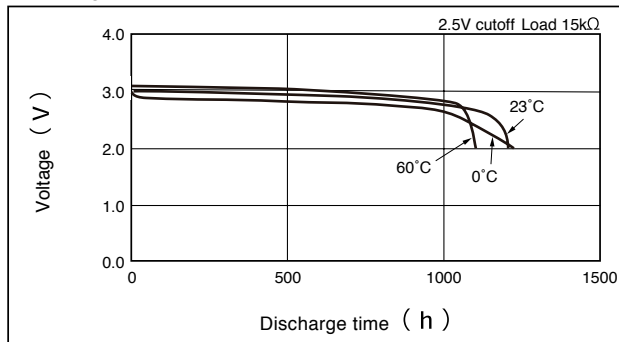
■ **Discharge Characteristics**



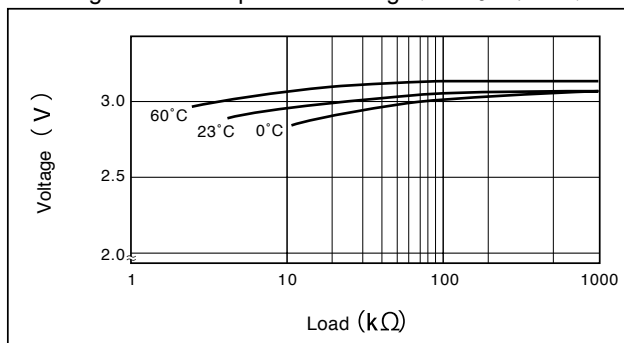
Discharge Characteristics on Load



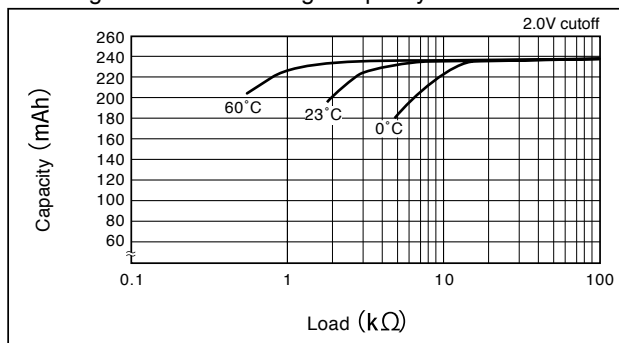
Discharge Characteristics on Temperature



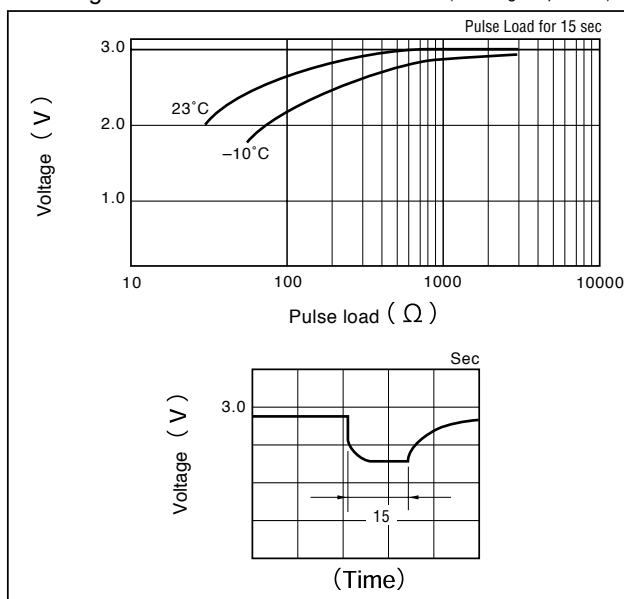
Discharge Load vs. Operation Voltage (Discharge depth 40%)



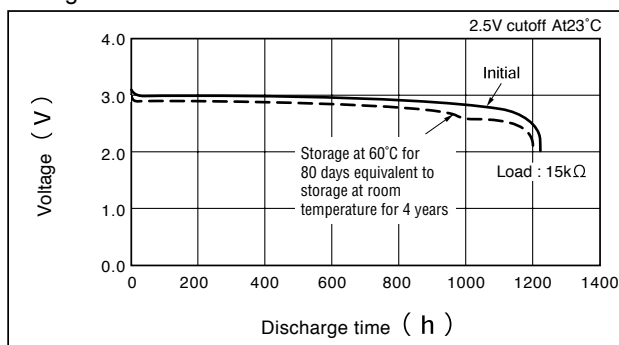
Discharge Load vs. Discharge Capacity



Discharge Characteristics on Pulse Load (Discharge depth 40%)



Storage Characteristics



This datasheet has been downloaded from:

www.DatasheetCatalog.com

Datasheets for electronic components.



LittleDiode supplies new, hard to find or obsolete electronic components and semiconductors all over the world.

With over two million different components listed you are sure to find the part you need.

Feel free to visit us today at our online store:

LittleDiode.com

Looking forward to providing you with the best possible service.