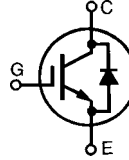


HiPerFAST™ IGBT Lightspeed™ Series

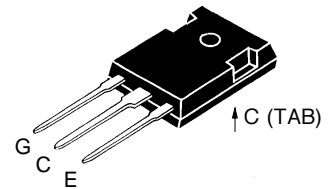
IXGH 12N60CD1

$V_{CES} = 600 \text{ V}$
 $I_{C25} = 24 \text{ A}$
 $V_{CE(sat)} = 2.7 \text{ V}$
 $t_{fi(typ)} = 55 \text{ ns}$



| Symbol | Test Conditions | Maximum Ratings | |
|---|---|----------------------------------|------------------|
| V_{CES} | $T_J = 25^\circ\text{C to } 150^\circ\text{C}$ | 600 | V |
| V_{CGR} | $T_J = 25^\circ\text{C to } 150^\circ\text{C}; R_{GE} = 1 \text{ M}\Omega$ | 600 | V |
| V_{GES} | Continuous | ± 20 | V |
| V_{GEM} | Transient | ± 30 | V |
| I_{C25} | $T_C = 25^\circ\text{C}$ | 24 | A |
| I_{C90} | $T_C = 90^\circ\text{C}$ | 12 | A |
| I_{CM} | $T_C = 25^\circ\text{C}, 1 \text{ ms}$ | 48 | A |
| SSOA (RBSOA) | $V_{GE} = 15 \text{ V}, T_{VJ} = 125^\circ\text{C}, R_G = 33 \Omega$ Clamped inductive load, $L = 300 \mu\text{H}$ | $I_{CM} = 24$ @ $0.8 V_{CES}$ | A |
| P_c | $T_C = 25^\circ\text{C}$ | 100 | W |
| T_J | | -55 ... +150 | $^\circ\text{C}$ |
| T_{JM} | | 150 | $^\circ\text{C}$ |
| T_{stg} | | -55 ... +150 | $^\circ\text{C}$ |
| M_d | Mounting torque with screw M3 Mounting torque with screw M3.5 | 0.45/4 0.55/5 | Nm/lb.in. |
| Weight | | 6 | g |
| Maximum lead temperature for soldering 1.6 mm (0.062 in.) from case for 10 s | | 300 | $^\circ\text{C}$ |

TO-247 AD



G = Gate, C = Collector,
E = Emitter, TAB = Collector

Features

- Very high frequency IGBT
- New generation HDMOS™ process
- International standard package JEDEC TO-247AD
- High peak current handling capability

Applications

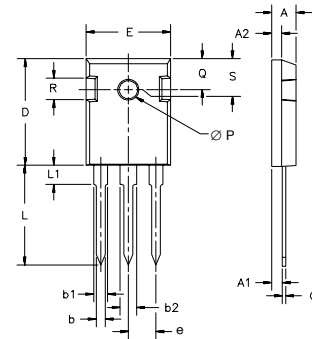
- PFC circuit
- AC motor speed control
- DC servo and robot drives
- Switch-mode and resonant-mode power supplies
- High power audio amplifiers

Advantages

- Fast switching speed
- High power density

| Symbol | Test Conditions | Characteristic Values ($T_J = 25^\circ\text{C}$, unless otherwise specified) | | |
|---------------|---|---|------|--|
| | | min. | typ. | max. |
| BV_{CES} | $I_C = 250 \mu\text{A}, V_{GE} = 0 \text{ V}$ | 600 | | V |
| $V_{GE(th)}$ | $I_C = 250 \mu\text{A}, V_{GE} = V_{GE}$ | 2.5 | | 5.0 V |
| I_{CES} | $V_{CE} = 0.8 V_{CES}$ $V_{GE} = 0 \text{ V}$ | | | $T_J = 25^\circ\text{C}$: 200 μA $T_J = 125^\circ\text{C}$: 1.5 mA |
| I_{GES} | $V_{CE} = 0 \text{ V}, V_{GE} = \pm 20 \text{ V}$ | | | $\pm 100 \text{ nA}$ |
| $V_{CE(sat)}$ | $I_C = I_{CE90}, V_{GE} = 15 \text{ V}$ | 2.1 | 2.7 | V |

| Symbol | Test Conditions | Characteristic Values ($T_J = 25^\circ\text{C}$, unless otherwise specified) | | |
|--------------|---|---|------|----------|
| | | min. | typ. | max. |
| g_{fs} | $I_C = I_{C90}$; $V_{CE} = 10\text{ V}$, Pulse test, $t \leq 300\ \mu\text{s}$, duty cycle $\leq 2\%$ | 5 | 11 | S |
| C_{ies} | $V_{CE} = 25\text{ V}$, $V_{GE} = 0\text{ V}$, $f = 1\text{ MHz}$ | | 860 | pF |
| C_{oes} | | | 100 | pF |
| C_{res} | | | 15 | pF |
| Q_g | $I_C = I_{C90}$, $V_{GE} = 15\text{ V}$, $V_{CE} = 0.5 V_{CES}$ | | 32 | nC |
| Q_{ge} | | | 10 | nC |
| Q_{gc} | | | 10 | nC |
| $t_{d(on)}$ | Inductive load, $T_J = 25^\circ\text{C}$ $I_C = I_{C90}$, $V_{GE} = 15\text{ V}$, $L = 300\ \mu\text{H}$ $V_{CE} = 0.8 V_{CES}$, $R_G = R_{off} = 18\ \Omega$ Remarks: Switching times may increase for $V_{CE}(\text{Clamp}) > 0.8 V_{CES}$, higher T_J or increased R_G | | 20 | ns |
| t_{ri} | | | 20 | ns |
| $t_{d(off)}$ | | | 60 | ns |
| t_{fi} | | | 55 | ns |
| E_{off} | | | 0.09 | mJ |
| | | | | |
| $t_{d(on)}$ | Inductive load, $T_J = 125^\circ\text{C}$ $I_C = I_{C90}$, $V_{GE} = 15\text{ V}$, $L = 300\ \mu\text{H}$ $V_{CE} = 0.8 V_{CES}$, $R_G = R_{off} = 18\ \Omega$ Remarks: Switching times may increase for $V_{CE}(\text{Clamp}) > 0.8 V_{CES}$, higher T_J or increased R_G | | 20 | ns |
| t_{ri} | | | 20 | ns |
| E_{on} | | | 0.5 | mJ |
| $t_{d(off)}$ | | | 85 | 180 ns |
| t_{fi} | | | 85 | 180 ns |
| E_{off} | | | 0.27 | 0.60 mJ |
| R_{thJC} | IGBT | | | 1.25 K/W |
| R_{thCK} | | 0.25 | | K/W |

TO-247 AD Outline


| Dim. | Millimeter | | Inches | |
|----------------|------------|-------|--------|-------|
| | Min. | Max. | Min. | Max. |
| A | 4.7 | 5.3 | .185 | .209 |
| A ₁ | 2.2 | 2.54 | .087 | .102 |
| A ₂ | 2.2 | 2.6 | .059 | .098 |
| b | 1.0 | 1.4 | .040 | .055 |
| b ₁ | 1.65 | 2.13 | .065 | .084 |
| b ₂ | 2.87 | 3.12 | .113 | .123 |
| C | .4 | .8 | .016 | .031 |
| D | 20.80 | 21.46 | .819 | .845 |
| E | 15.75 | 16.26 | .610 | .640 |
| e | 5.20 | 5.72 | 0.205 | 0.225 |
| L | 19.81 | 20.32 | .780 | .800 |
| L1 | | 4.50 | | .177 |
| ØP | 3.55 | 3.65 | .140 | .144 |
| Q | 5.89 | 6.40 | 0.232 | 0.252 |
| R | 4.32 | 5.49 | .170 | .216 |
| S | 6.15 | BSC | .242 | BSC |

| Symbol | Test Conditions | Characteristic Values ($T_J = 25^\circ\text{C}$, unless otherwise specified) | | |
|------------|--|---|------|---------|
| | | min. | typ. | max. |
| V_F | $I_F = 15\text{ A}$; $T_{VJ} = 150^\circ\text{C}$ $T_{VJ} = 25^\circ\text{C}$ | | 1.7 | V |
| | | | | 2.5 V |
| I_{RM} | $V_R = 100\text{ V}$; $I_F = 25\text{ A}$; $-di_F/dt = 100\text{ A}/\mu\text{s}$ $L < 0.05\ \mu\text{H}$; $T_{VJ} = 100^\circ\text{C}$ | | 2 | 2.5 A |
| t_{rr} | $I_F = 1\text{ A}$; $-di/dt = 50\text{ A}/\mu\text{s}$; $V_R = 30\text{ V}$ $T_J = 25^\circ\text{C}$ | | 35 | ns |
| R_{thJC} | Diode | | | 1.6 K/W |

IXYS reserves the right to change limits, test conditions, and dimensions.

This datasheet has been downloaded from:

www.DatasheetCatalog.com

Datasheets for electronic components.



LittleDiode supplies new, hard to find or obsolete electronic components and semiconductors all over the world.

With over two million different components listed you are sure to find the part you need.

Feel free to visit us today at our online store:

LittleDiode.com

Looking forward to providing you with the best possible service.