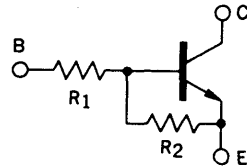


DESCRIPTION The AA1A4P is designed for use in medium speed switching circuit.

FEATURE • Bias resistors built-in type NPN transistor equivalent circuit.



$R_1 = 10\text{ k}\Omega$
 $R_2 = 47\text{ k}\Omega$

ABSOLUTE MAXIMUM RATINGS

Maximum Temperatures

Storage Temperature -55 to $+150\text{ }^\circ\text{C}$

Junction Temperature $150\text{ }^\circ\text{C}$ Maximum

Maximum Power Dissipation ($T_a = 25\text{ }^\circ\text{C}$)

Total Power Dissipation 300 mW

Maximum Voltages and Currents ($T_a = 25\text{ }^\circ\text{C}$)

V_{CBO} Collector to Base Voltage 60 V

V_{CEO} Collector to Emitter Voltage 50 V

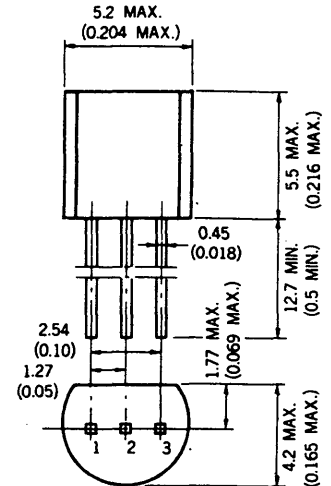
V_{EBO} Emitter to Base Voltage 5.0 V

$I_{C(DC)}$ Collector Current (DC) 100 mA

$I_{C(pulse)}$ Collector Current (pulse) 200 mA

PACKAGE DIMENSIONS

in millimeters (inches)

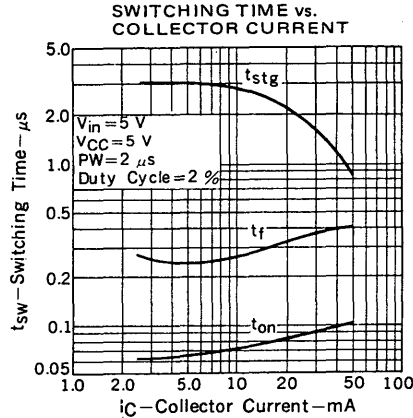
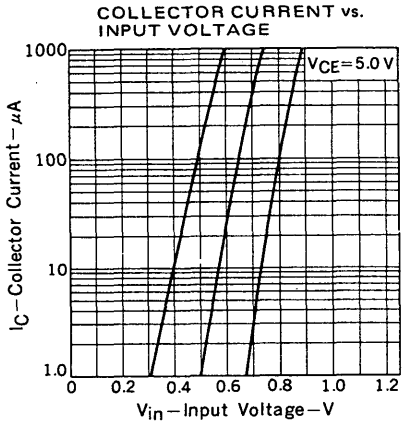
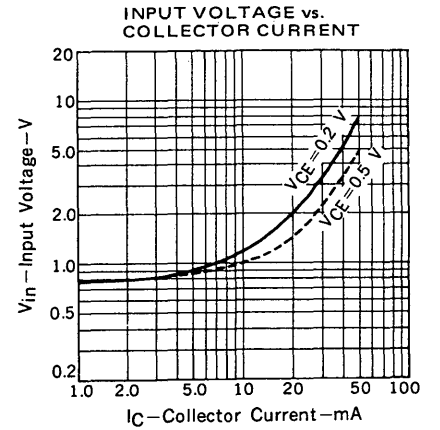
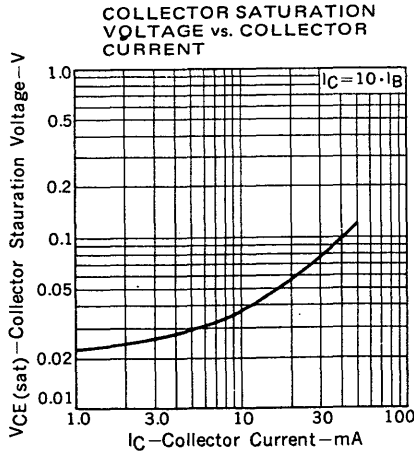
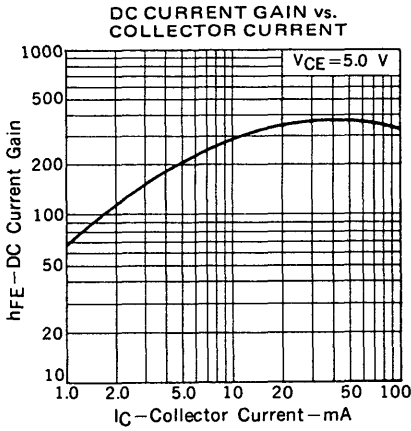
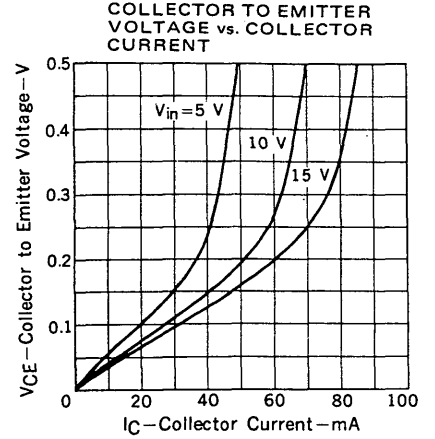
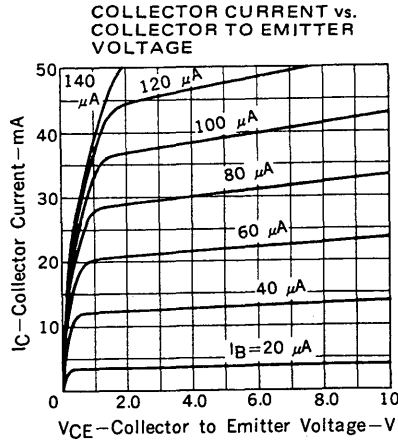
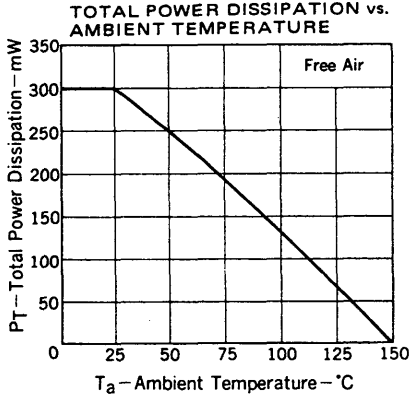


1. EMITTER EIAJ : SC-43B
2. COLLECTOR JEDEC : TO-92
3. BASE IEC : PA33

ELECTRICAL CHARACTERISTICS ($T_a = 25\text{ }^\circ\text{C}$)

SYMBOL	CHARACTERISTIC	MIN.	TYP.	MAX.	UNIT	TEST CONDITIONS
R_1	Input Resistance	7.0	10.0	13.0	$\text{k}\Omega$	
R_2	Input Resistance	32.9	47.0	61.1	$\text{k}\Omega$	
V_{IL}	Low Level Input Voltage		0.65	0.5	V	$V_{CE} = 5.0\text{ V}, I_C = 100\text{ }\mu\text{A}$
V_{IH}	Hi Level Input Voltage	3.0	0.89		V	$V_{CE} = 0.2\text{ V}, I_C = 5.0\text{ mA}$
t_{on}	Turn On Time		0.1	0.2	μs	$V_{CC} = 5.0\text{ V}, R_L = 1.0\text{ k}\Omega,$ $V_{in} = 5.0\text{ V},$ $PW = 2\text{ }\mu\text{s}, \text{Duty Cycle} \leq 2\%$
t_{stg}	Storage Time		3.0	5.0	μs	
t_{off}	Turn Off Time		3.2	6.0	μs	
h_{FE1}	DC Current Gain	85	210	340	—	$V_{CE} = 5.0\text{ V}, I_C = 5.0\text{ mA}$
h_{FE2}	DC Current Gain	95	370		—	$V_{CE} = 5.0\text{ V}, I_C = 50\text{ mA}$
$V_{CE(sat)}$	Collector Saturation Voltage		0.04	0.2	V	$I_C = 5.0\text{ mA}, I_B = 0.25\text{ mA}$
I_{CBO}	Collector Cutoff Current			0.1	μA	$V_{CB} = 50\text{ V}, I_E = 0$

TYPICAL CHARACTERISTICS ($T_a = 25^\circ\text{C}$)



This datasheet has been downloaded from:

www.DatasheetCatalog.com

Datasheets for electronic components.



LittleDiode supplies new, hard to find or obsolete electronic components and semiconductors all over the world.

With over two million different components listed you are sure to find the part you need.

Feel free to visit us today at our online store:

LittleDiode.com

Looking forward to providing you with the best possible service.