

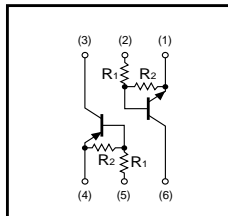
Power management (dual digital transistors)

EMD12 / UMD12N

●Features

- 1) Both the DTA144E and DTC144E in a EMT or UMT package.

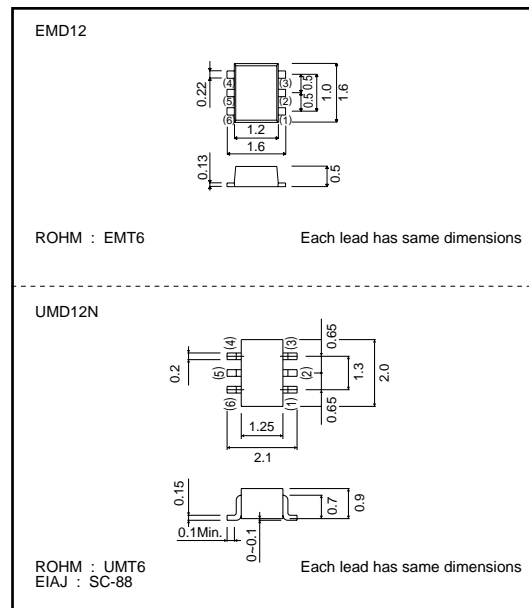
●Equivalent circuit



●Package, marking, and packaging specifications

Type	EMD12	UMD12N
Package	EMT6	UMT6
Marking	D12	D12
Code	T2R	TR
Basic ordering unit (pieces)	8000	3000

●External dimensions (Units : mm)



●Absolute maximum ratings (Ta=25°C)

Parameter	Symbol	Limits	Unit
Supply voltage	V_{CC}	50	V
Input voltage	V_{IN}	40	V
		-10	
Output current	I_C	100	mA
	I_O	30	mA
Power dissipation	P_d	150(TOTAL)	mW *1
Junction temperature	T_j	150	°C
Storage temperature	T_{stg}	-55~+150	°C

*1 120mW per element must not be exceeded.
PNP type negative symbols have been omitted

●Electrical characteristics (Ta=25°C)

Parameter	Symbol	Min.	Typ.	Max.	Unit	Conditions
Input voltage	$V_{I(off)}$	-	-	0.5	V	$V_{CC}=5/-5V, I_O=100/-100\mu A$
	$V_{I(on)}$	3	-	-	V	$V_O=0.3/-0.3V, I_O=2/-2mA$
Output voltage	$V_{O(on)}$	-	-	0.3	V	$I_O=10/-10mA, I_I=0.5/-0.5mA$
Input current	I_I	-	-	0.18	mA	$V_I=5/-5V$
Output current	$I_{O(off)}$	-	-	0.5	μA	$V_{CC}=50/-50V, V_I=0V$
DC current gain	G_I	68	-	-	-	$I_O=5/-5mA, V_O=5/-5V$
Transition frequency	f_r	-	250	-	MHz	$V_{CE}=10/-10V, I_E=-5/5mA, f=100MHz$ *
Input resistance	R_1	32.9	47	61.1	k Ω	-
Resistance ratio	R_2/R_1	0.8	1	1.2	-	-

*Transition frequency of the device. PNP type negative symbols have been omitted



LittleDiode supplies new, hard to find or obsolete electronic components and semiconductors all over the world.

With over two million different components listed you are sure to find the part you need.

Feel free to visit us today at our online store:

LittleDiode.com

Looking forward to providing you with the best possible service.