

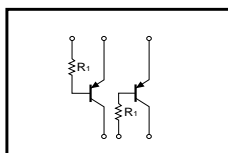
General purpose (dual digital transistors)

IMB7A

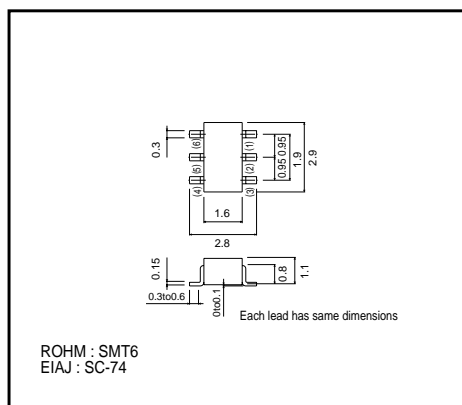
●Features

1) Two DTA143T chips in a SMT package.

●Circuit diagram



●External dimensions (Units : mm)



●Absolute maximum ratings (Ta = 25°C)

Parameter	Symbol	Limits	Unit
Collector-base voltage	V _{CB0}	-50	V
Collector-emitter voltage	V _{CE0}	-50	V
Emitter-base voltage	V _{EB0}	-5	V
Collector current	I _c	-100	mA
Collector power dissipation	P _c	300(TOTAL)	mW *
Junction temperature	T _J	150	°C
Storage temperature	T _{stg}	-55→+150	°C

* 200mW per element must not be exceeded.

●Package, marking, and packaging specifications

Type	IMB7A
Package	SMT6
Marking	B7
Code	T110
Basic ordering unit (pieces)	3000

●Electrical characteristics (Ta = 25°C)

Parameter	Symbol	Min.	Typ.	Max.	Unit	Conditions
Collector-base breakdown voltage	BV _{CB0}	-50	-	-	V	I _c =-50μA
Collector-emitter breakdown voltage	BV _{CE0}	-50	-	-	V	I _c =-1mA
Emitter-base breakdown voltage	BV _{EB0}	-5	-	-	V	I _E =-50μA
Collector cutoff current	I _{cbo}	-	-	-0.5	μA	V _{CB} =-50V
Emitter cutoff current	I _{EBO}	-	-	-0.5	μA	V _{EB} =-4V
DC current transfer ratio	h _{FE}	100	250	600	-	V _{CE} /I _C =-5V/-1mA
Collector-emitter saturation voltage	V _{CE(sat)}	-	-	-0.3	V	I _C /I _B =-5mA/-0.25mA
Input resistance	R ₁	3.29	4.7	6.11	kΩ	-



LittleDiode supplies new, hard to find or obsolete electronic components and semiconductors all over the world.

With over two million different components listed you are sure to find the part you need.

Feel free to visit us today at our online store:

LittleDiode.com

Looking forward to providing you with the best possible service.