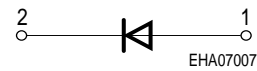
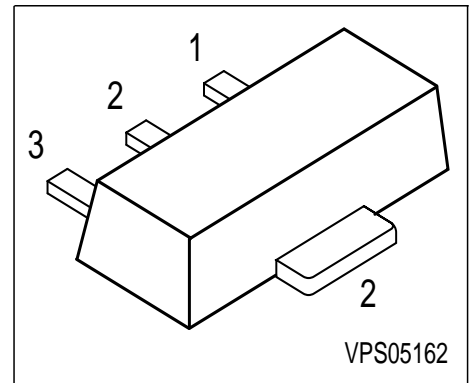


**Silicon Switching Diodes**

- Switching applications
- High breakdown voltage



Type	Marking	Pin Configuration			Package
BAW78A	GA	1 = A	2 = C	3 = n.c.	SOT89
BAW78B	GB	1 = A	2 = C	3 = n.c.	SOT89
BAW78C	GC	1 = A	2 = C	3 = n.c.	SOT89
BAW78D	GD	1 = A	2 = C	3 = n.c.	SOT89

**Maximum Ratings**

Parameter	Symbol	BAW 78A	BAW 78B	BAW 78C	BAW 78D	Unit
Diode reverse voltage	$V_R$	50	100	200	400	V
Peak reverse voltage	$V_{RM}$	50	100	200	400	
Forward current	$I_F$	1				A
Peak forward current	$I_{FM}$	1				
Surge forward current, $t = 1 \mu s$	$I_{FS}$	10				
Total power dissipation, $T_S = 125 \text{ }^\circ\text{C}$	$P_{tot}$	1				W
Junction temperature	$T_j$	150				$^\circ\text{C}$
Storage temperature	$T_{stg}$	-65 ... 150				

**Thermal Resistance**

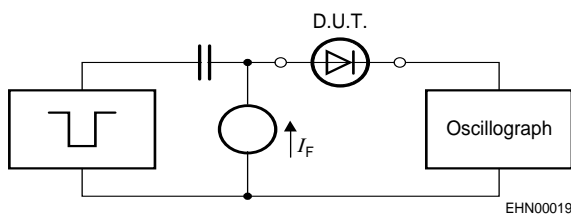
Junction - soldering point <sup>1)</sup>	$R_{thJS}$	$\leq 25$	K/W
--	------------	-----------	-----

<sup>1)</sup>For calculation of  $R_{thJA}$  please refer to Application Note Thermal Resistance

**Electrical Characteristics** at  $T_A = 25\text{ }^\circ\text{C}$ , unless otherwise specified.

Parameter	Symbol	Values			Unit
		min.	typ.	max.	
<b>DC characteristics</b>					
Breakdown voltage $I_{(BR)} = 100\text{ }\mu\text{A}$	$V_{(BR)}$				V
BAW78A		50	-	-	
BAW78B		100	-	-	
BAW78C		200	-	-	
BAW78D		400	-	-	
Forward voltage $I_F = 1\text{ A}$ $I_F = 2\text{ A}$	$V_F$				
		-	-	1.6	
		-	-	2	
Reverse current $V_R = V_{Rmax}$	$I_R$	-	-	1	$\mu\text{A}$
Reverse current $V_R = V_{Rmax}, T_A = 150\text{ }^\circ\text{C}$	$I_R$	-	-	50	
<b>AC characteristics</b>					
Diode capacitance $V_R = 0\text{ V}, f = 1\text{ MHz}$	$C_D$	-	10	-	pF
Reverse recovery time $I_F = 200\text{ mA}, I_R = 200\text{ mA}, R_L = 100\text{ }\Omega$ , measured at $I_R = 20\text{ mA}$	$t_{rr}$	-	1	-	$\mu\text{s}$

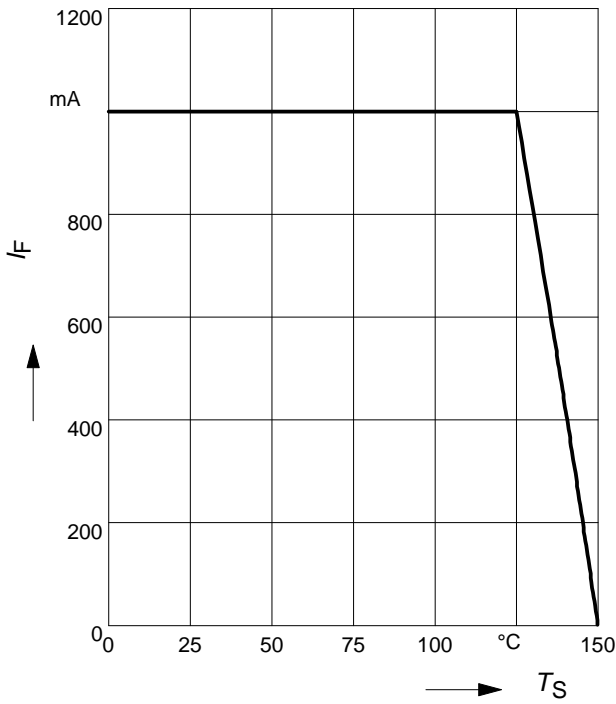
**Test circuit for reverse recovery time**



Pulse generator:  $t_p = 10\text{ }\mu\text{s}$ ,  $D = 0.05$ ,  
 $t_f = 0.6\text{ ns}$ ,  $R_i = 50\text{ }\Omega$

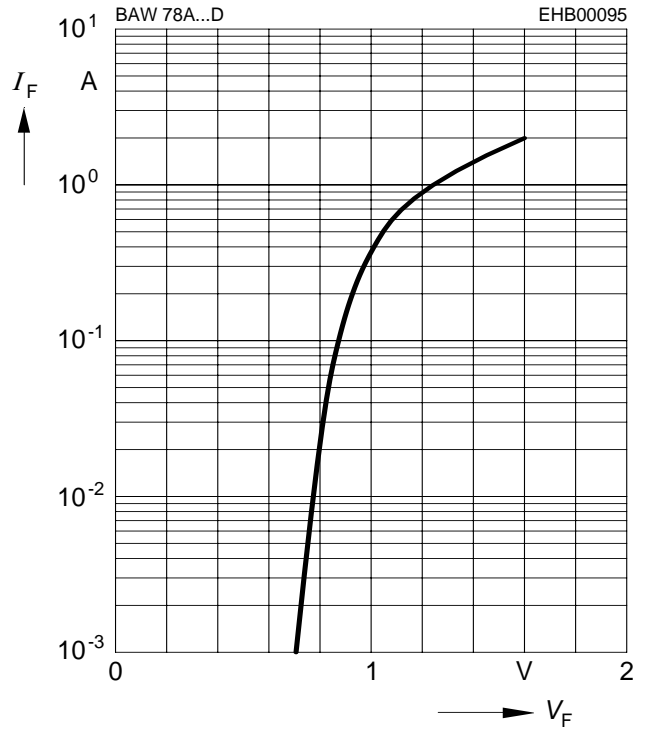
Oscilloscope:  $R = 50\text{ }\Omega$ ,  $t_f = 0.35\text{ ns}$ ,  
 $C \leq 1\text{ pF}$

Forward current  $I_F = f(T_S)$



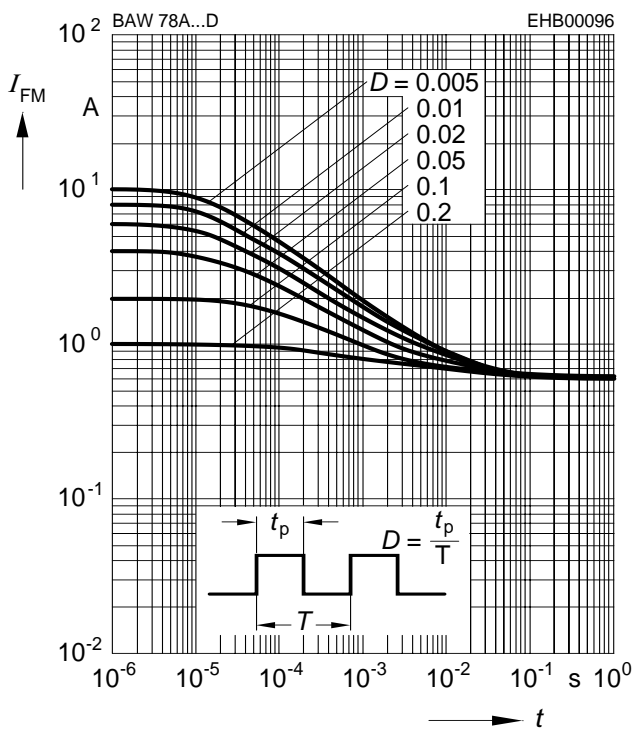
Forward current  $I_F = f(V_F)$

$T_A = 25^\circ\text{C}$



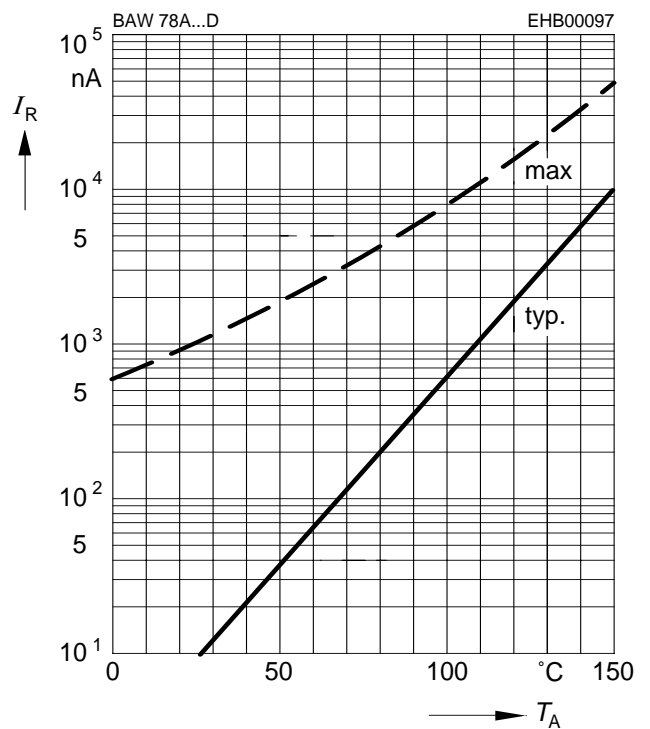
Peak forward current  $I_{FM} = f(t_p)$

$T_A = 25^\circ\text{C}$



Reverse current  $I_R = f(T_A)$

$V_R = V_{Rmax}$



This datasheet has been downloaded from:

[www.DatasheetCatalog.com](http://www.DatasheetCatalog.com)

Datasheets for electronic components.



LittleDiode supplies new, hard to find or obsolete electronic components and semiconductors all over the world.

With over two million different components listed you are sure to find the part you need.

Feel free to visit us today at our online store:

[LittleDiode.com](http://LittleDiode.com)

Looking forward to providing you with the best possible service.