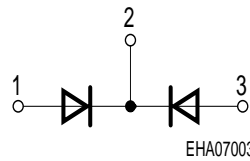
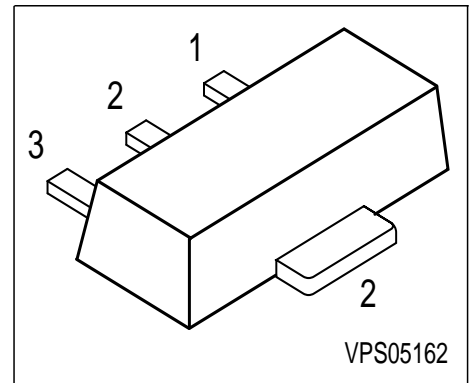


Silicon Switching Diodes

- Switching applications
- High breakdown voltage
- Common cathode



Type	Marking	Pin Configuration			Package
BAW79A	GE	1 = A1	2 = C1/2	3 = A2	SOT89
BAW79B	GF	1 = A1	2 = C1/2	3 = A2	SOT89
BAW79C	GG	1 = A1	2 = C1/2	3 = A2	SOT89
BAW79D	GH	1 = A1	2 = C1/2	3 = A2	SOT89

Maximum Ratings

Parameter	Symbol	BAW 79A	BAW 79B	BAW 79C	BAW 79D	Unit
Diode reverse voltage	V_R	50	100	200	400	V
Peak reverse voltage	V_{RM}	50	100	200	400	
Forward current	I_F	1				A
Peak forward current	I_{FM}	1				
Surge forward current, $t = 1 \mu s$	I_{FS}	10				
Total power dissipation, $T_S = 115 \text{ }^\circ\text{C}$	P_{tot}	1				W
Junction temperature	T_j	150				$^\circ\text{C}$
Storage temperature	T_{stg}	-65 ... 150				

Thermal Resistance

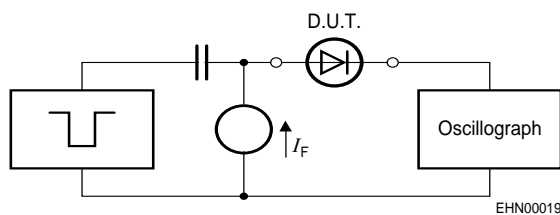
Junction - soldering point ¹⁾	R_{thJS}	≤ 35	K/W
--	------------	-----------	-----

¹⁾For calculation of R_{thJA} please refer to Application Note Thermal Resistance

Electrical Characteristics at $T_A = 25^\circ\text{C}$, unless otherwise specified.

Parameter	Symbol	Values			Unit
		min.	typ.	max.	
DC characteristics					
Breakdown voltage $I_{(BR)} = 100 \mu\text{A}$	$V_{(BR)}$				V
BAW79A		50	-	-	
BAW79B		100	-	-	
BAW79C		200	-	-	
BAW79D		400	-	-	
Forward voltage $I_F = 1 \text{ A}$ $I_F = 2 \text{ A}$	V_F				
		-	-	1.6	
		-	-	2	
Reverse current $V_R = V_{Rmax}$	I_R	-	-	1	μA
Reverse current $V_R = V_{Rmax}, T_A = 150^\circ\text{C}$	I_R	-	-	50	
AC characteristics					
Diode capacitance $V_R = 0 \text{ V}, f = 1 \text{ MHz}$	C_D	-	10	-	pF
Reverse recovery time $I_F = 200 \text{ mA}, I_R = 200 \text{ mA}, R_L = 100 \Omega$, measured at $I_R = 20\text{mA}$	t_{rr}	-	1	-	μs

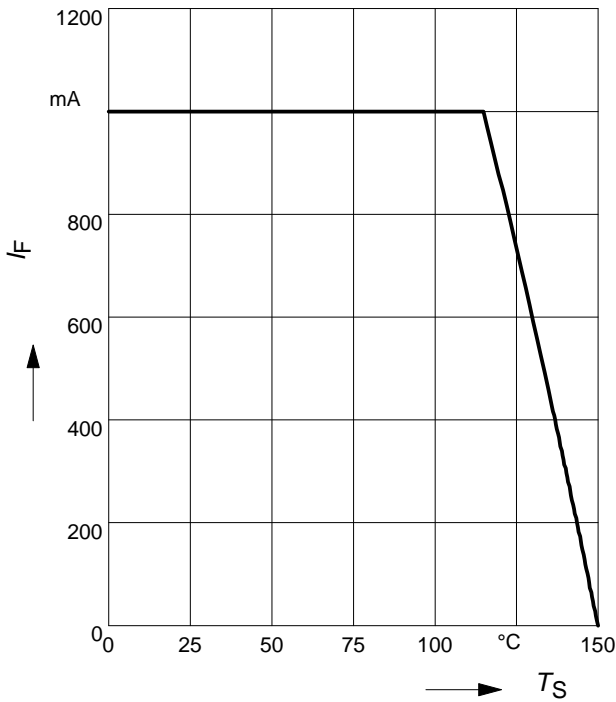
Test circuit for reverse recovery time



Pulse generator: $t_p = 10\mu\text{s}$, $D = 0.05$,
 $t_f = 0.6\text{ns}$, $R_i = 50\Omega$

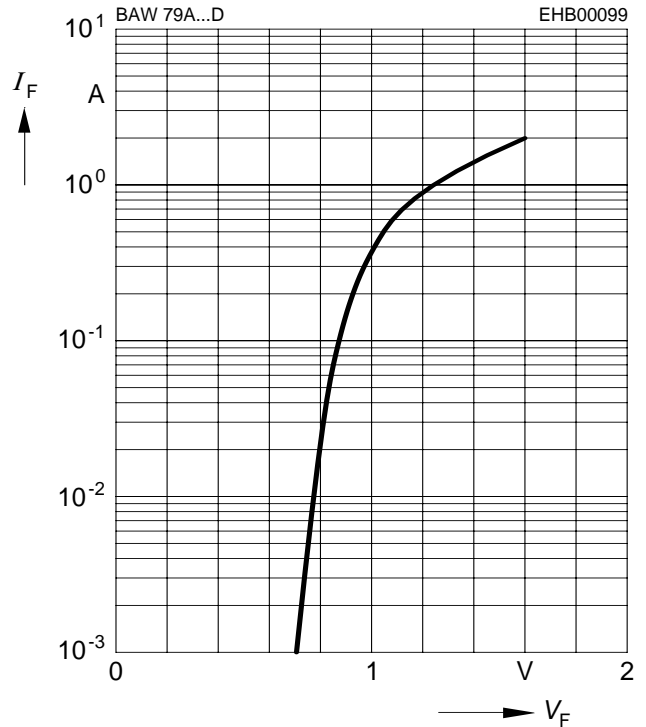
Oscilloscope: $R = 50\Omega$, $t_f = 0.35\text{ns}$,
 $C \leq 1\text{pF}$

Forward current $I_F = f(T_S)$



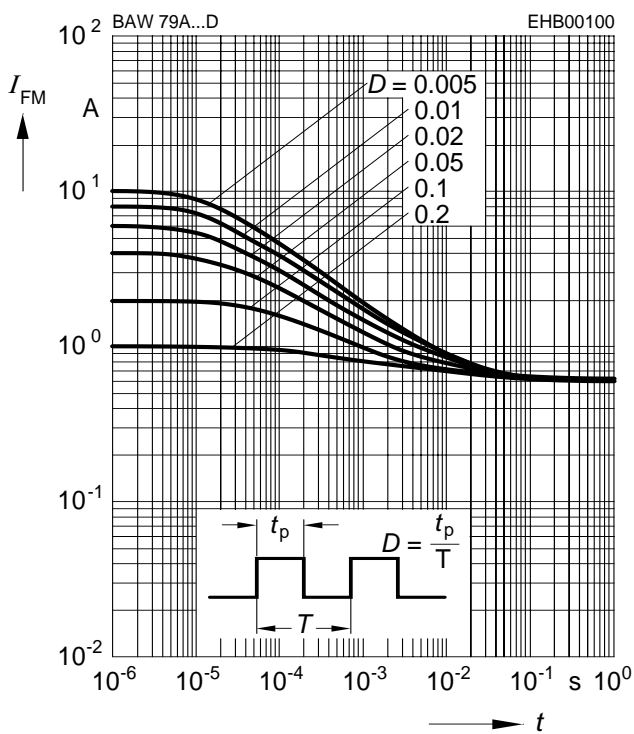
Forward current $I_F = f(V_F)$

$T_A = 25^\circ\text{C}$



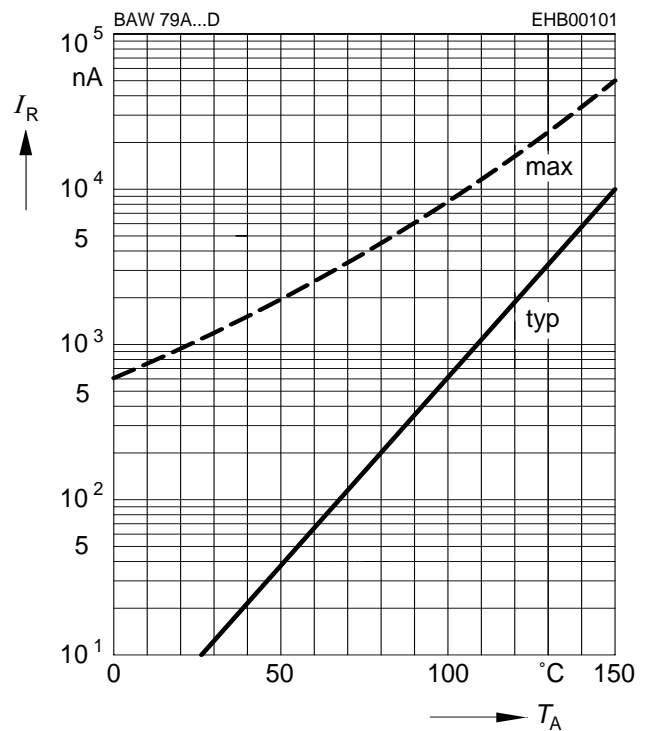
Peak forward current $I_{FM} = f(t_p)$

$T_A = 25^\circ\text{C}$



Reverse current $I_R = f(T_A)$

$V_R = V_{Rmax}$



This datasheet has been downloaded from:

www.DatasheetCatalog.com

Datasheets for electronic components.



LittleDiode supplies new, hard to find or obsolete electronic components and semiconductors all over the world.

With over two million different components listed you are sure to find the part you need.

Feel free to visit us today at our online store:

LittleDiode.com

Looking forward to providing you with the best possible service.