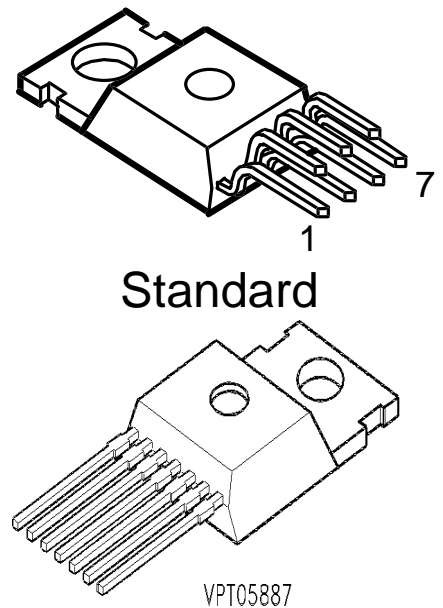


PWM Power Unit

The device allows continuous power control for lamps, LEDs or inductive loads.

- Highside switch
- Overtemperature protection
- Short circuit / overload protection through pulse width reduction and overload shutdown
- Load dump protection
- Undervoltage and overvoltage shutdown with auto-restart and hysteresis
- Reverse battery protection 1)
- Timing frequency adjustable
- Controlled switching rise and fall times
- Maximum current internally limited
- Protection against loss of GND 2)
- Electrostatic discharge (ESD) protection
- Package: TO220/7 and TO220/7 E3128 (SMD), Pin 4 is shorted to the mounting flange



Note: Switching frequency is programmed with an external capacitor.

Type	Ordering Code	Marking	Package
BTS630 (Standard)	Q67060-S6305-A2	-	TO220/7
BTS630	Q67060-S6305-A3	-	TO220/7, E3230

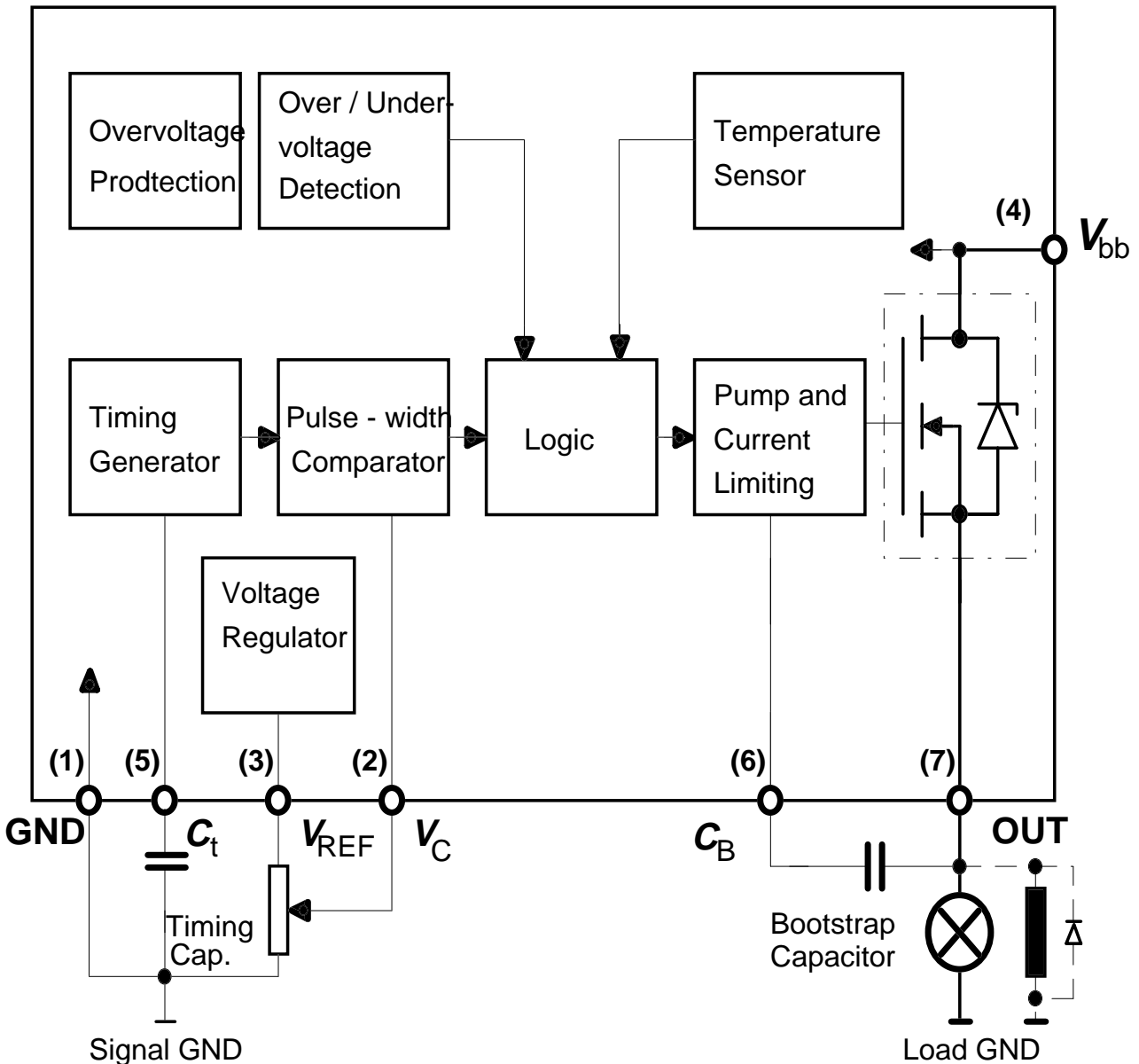
Maximum Ratings

Parameter	Symbol	Values	Unit
Active overvoltage protection	$V_{bb(AZ)}$	>40	V
Short circuit current	I_{SC}	self-limited	-
Input current (DC)	I_{Ct}	2	mA
Pin1 (C_t) and pin19 (V_C)	I_{Vc}	2	mA
Operating temperature range	T_j	-40...+150	°C
Storage temperature range	T_{stg}	-50...+150	
Power dissipation $T_a=25^\circ\text{C}$	P_{tot}	75	W
Thermal resistance chip-case	$R_{th JC}$	≤ 1.67	K/W
chip-ambient	$R_{th JA}$	≤ 75	

¹⁾ With 150Ω resistor in signal GND connection.

²⁾ Potential between signal GND and load GND >0.5V

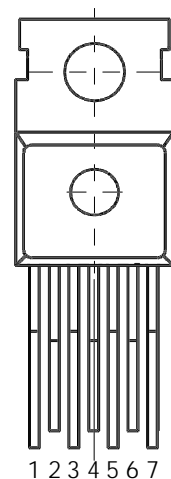
Block Diagram



Pin Definitions and Funktionen

Pin	Symbol	Funktionen
1	GND	Ground
2	V_C	Voltage for PWM-Control
3	V_{REF}	Reference Voltage
4	V_{bb}	Supply voltage
5	C_t	Timing capacitor for frequency
6	C_B	Bootstrap capacitor
7	OUT	Output

Pin Configuration (top view)



Electrical Characteristics

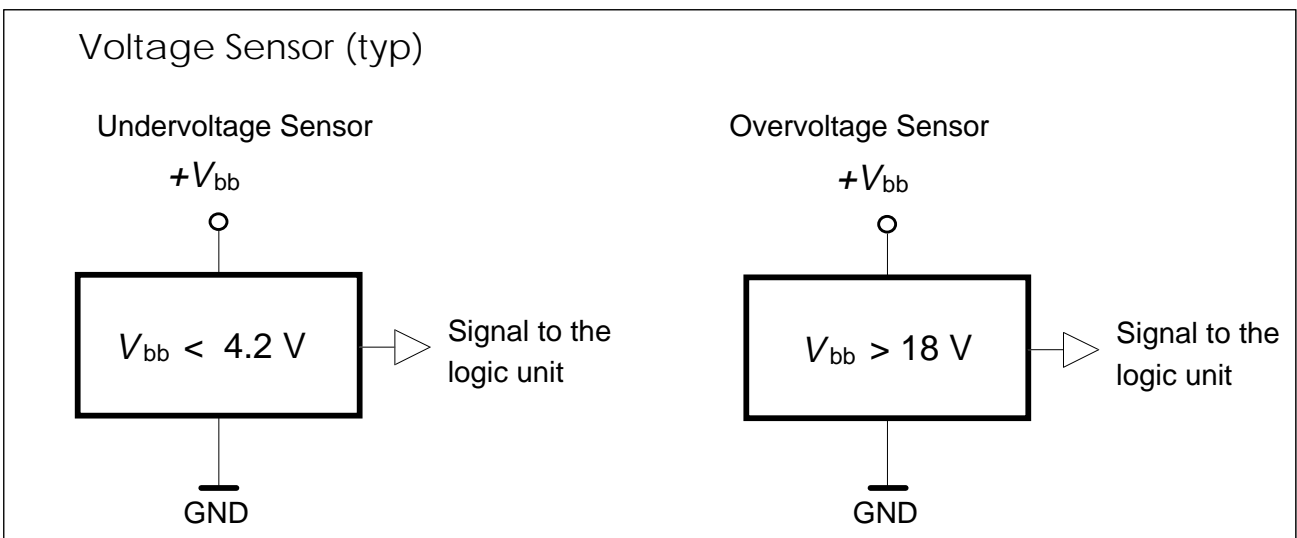
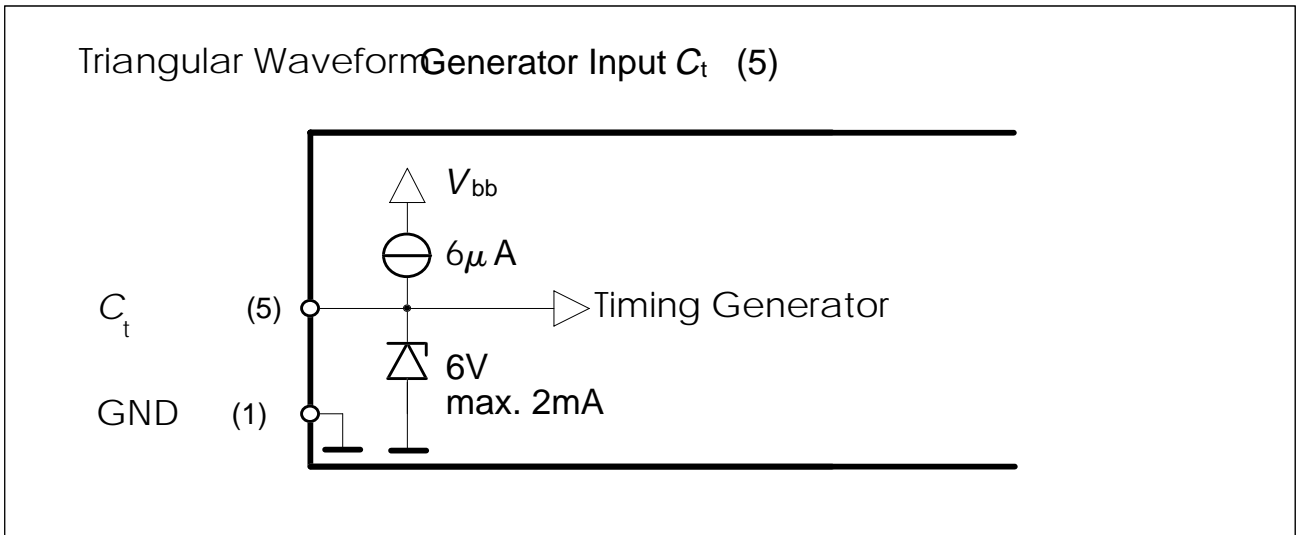
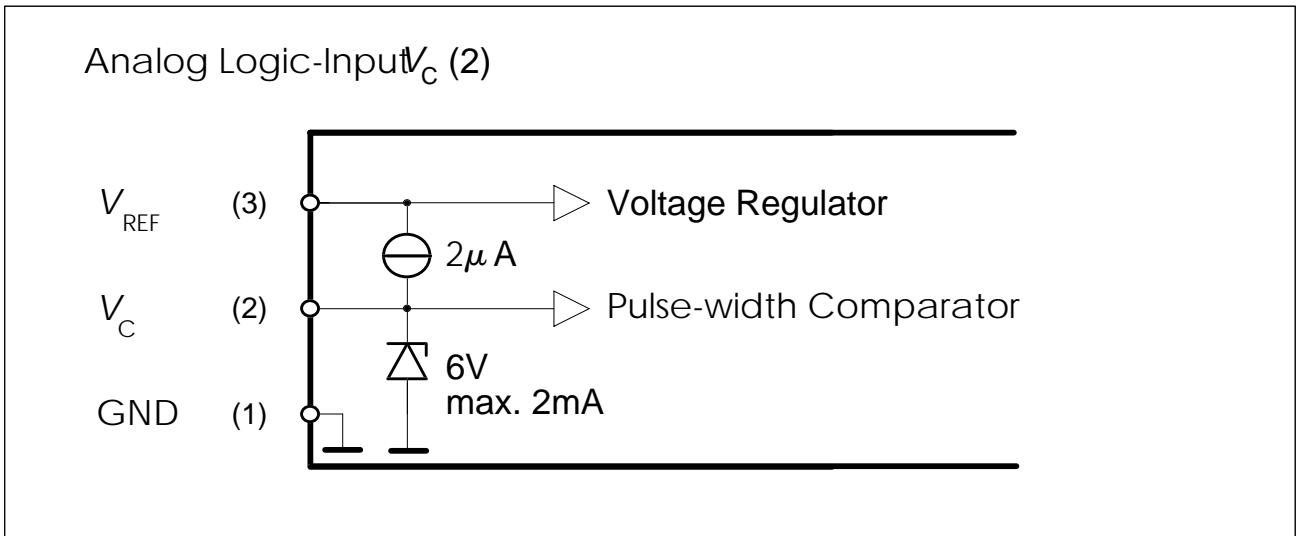
at $T_j = 25\text{ °C}$, unless otherwise specified. $C_{\text{Bootstrap}} = 22\text{ nF}$

Parameter	Symbol	Values			Unit
		min.	typ.	max.	
On-state resistance $I_L = 3\text{ A}$, $V_{\text{bb}} = 12\text{ V}$	R_{ON}	-	-	70	$\text{m}\Omega$
Operating voltage $T_j = -40 \dots +150\text{ °C}$	V_{bb}	5.9 ¹⁾		16.9 ²⁾	V
Nominal current, calculated value ISO-standard: $V_{\text{bb}} - V_{\text{OUT}} \leq 0.5\text{ V}$, $T_c = 85\text{ °C}$	$I_L\text{-ISO}$	5.8	-	-	A
Load current limit $V_{\text{bb}} - V_{\text{OUT}} > 1\text{ V}$	I_{LLim}	-	20	-	A
Undervoltage shutdown $I_L = 3\text{ A}$	$V_{\text{bb(LOW)}}$	3	4.2	5.4	V
Overvoltage shutdown $I_L = 3\text{ A}$	$V_{\text{bb(HI)}}$	17	18	19	V
Max. output voltage (RMS) $I_L = 3\text{ A}$, $V_{\text{bb}} > 12\text{ V}$	V_{RMSmax}	12	-	14	V
Reference voltage $I_{\text{REF}} = 10\text{ mA}$	V_{REF}	2		3	V
Reference current pin 18 (GND) to pin 20 (V_{REF}) short	I_{REF}	-	150	-	mA
Internal current consumption during operation, measured in PWM gap	I_{R}	-		5	mA
Bootstrap voltage, pin 2 (C_{B1}) to pin 3 (C_{B2}) $V_{\text{bb}} = 12\text{ V}$,	V_{B}	-	10	-	V
PWM frequency $T_c = -40 \dots +150\text{ °C}$, $C_t = 68\text{ nF}$	f_{PWM}	50	-	100	Hz
Max. pulse duty factor $I_L = 3\text{ A}$, $V_c = 0\text{ V}$, (50% V_{OUT})	D_{imax}	95	98	-	%
Min. pulse duty factor $I_L = 3\text{ A}$, $V_c = 0\text{ V}$, (50% V_{OUT})	D_{imin}	-	8	14	%
Slew rate "on" 10 ... 90% I_{OUT}	$du/dt_{\text{(on)}}$	20	-	120	$\text{mV}/\mu\text{s}$
Slew rate "off" 90 ... 10% I_{OUT}	$du/dt_{\text{(off)}}$	20	-	120	$\text{mV}/\mu\text{s}$
Thermal overload trip temperature	T_j	150	-	-	°C

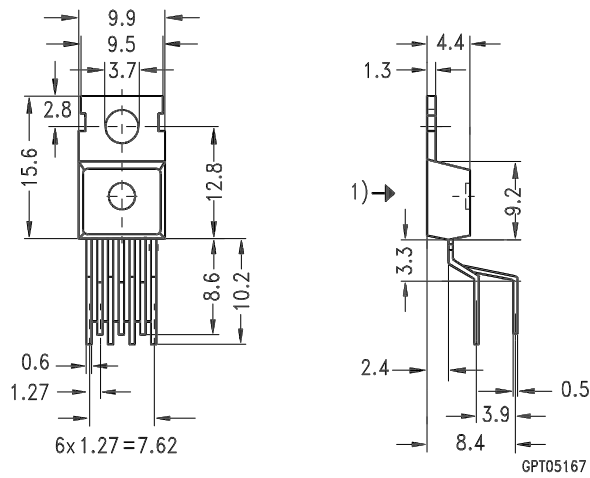
1) **Note:** undervoltage shutdown

2) **Note:** overvoltage shutdown

Circuits



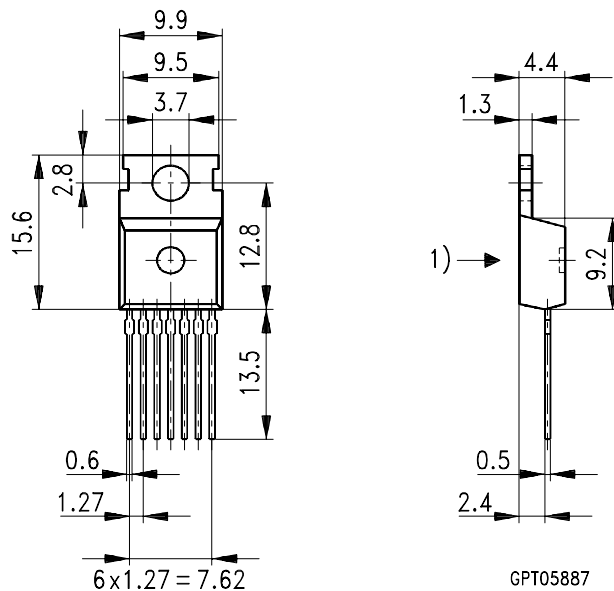
Package Outline TO220/7



1) shear and punch direction no burrs this surface

Dimensions in mm

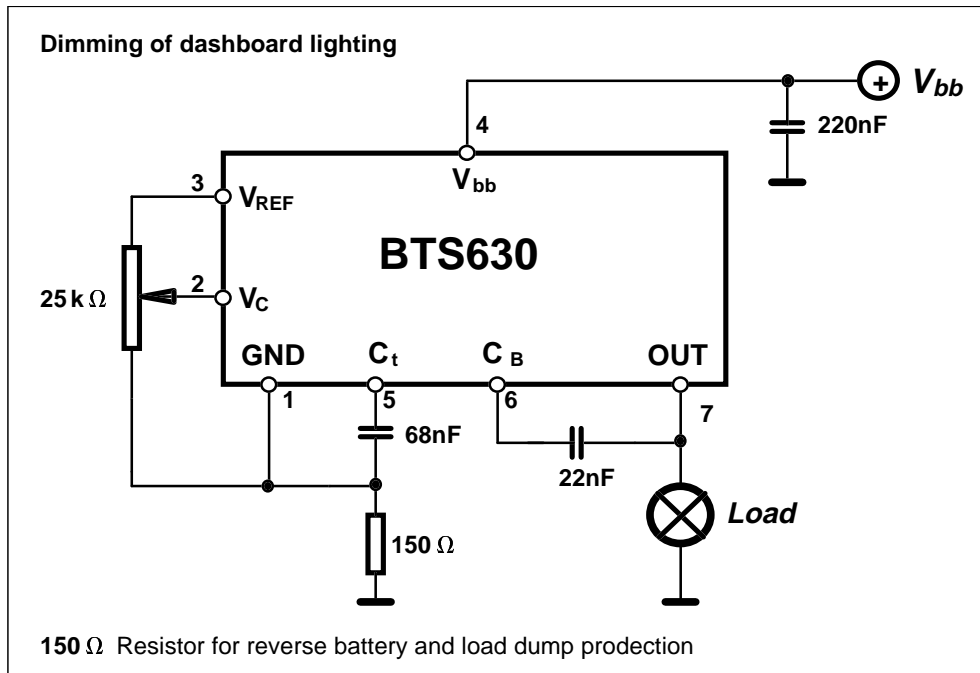
Package Outline TO220/7 E3230

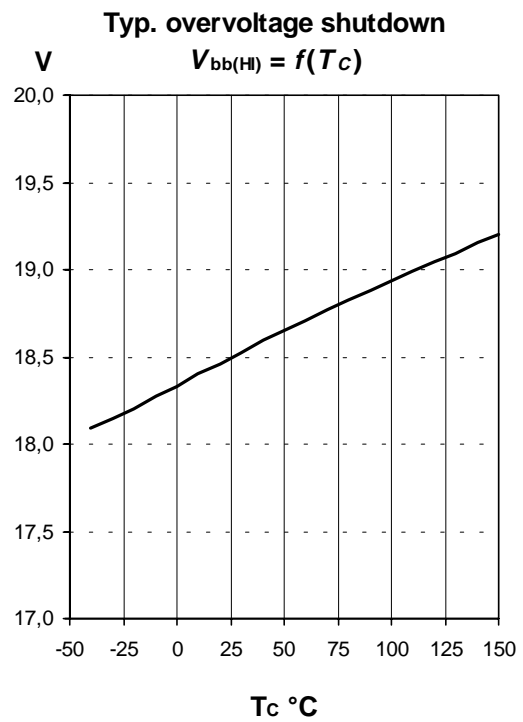
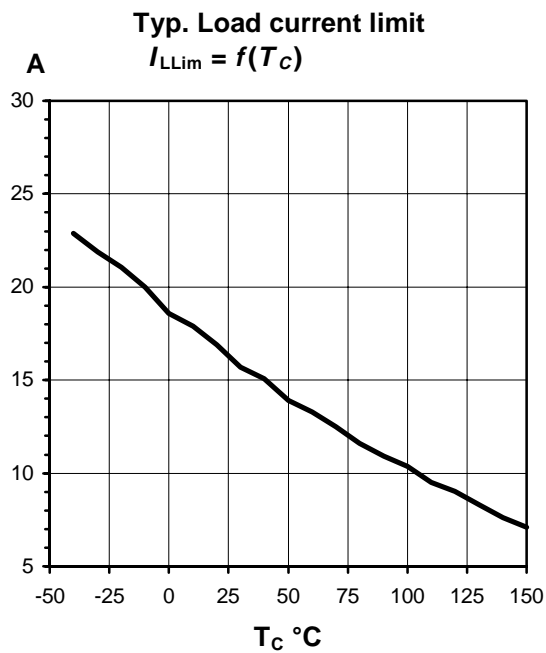
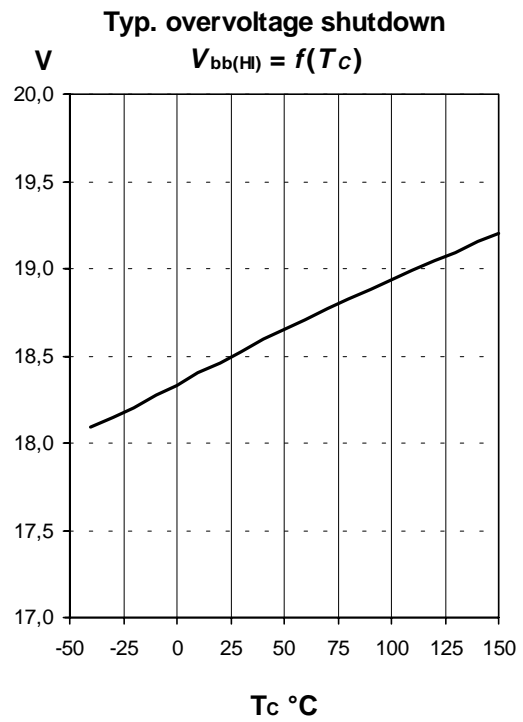
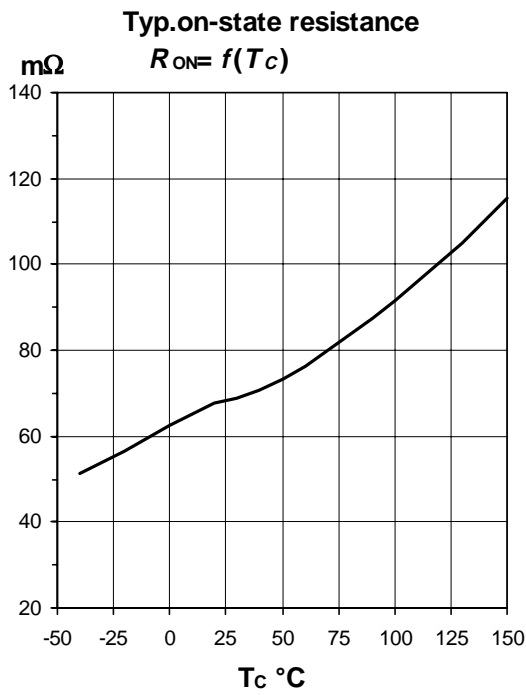


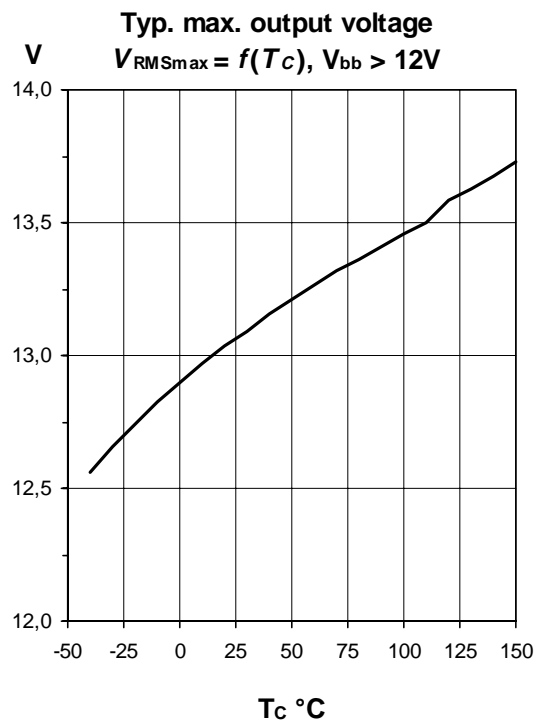
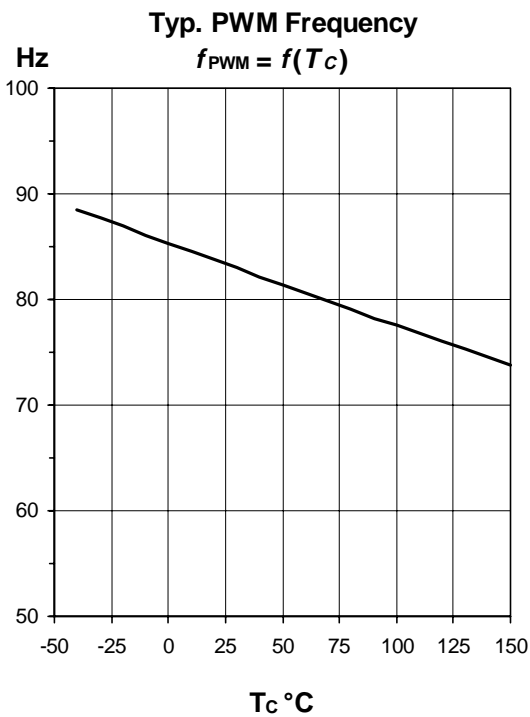
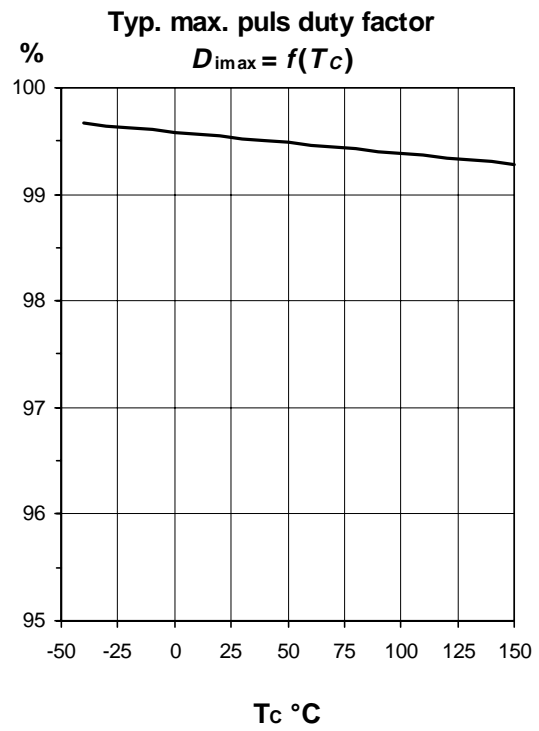
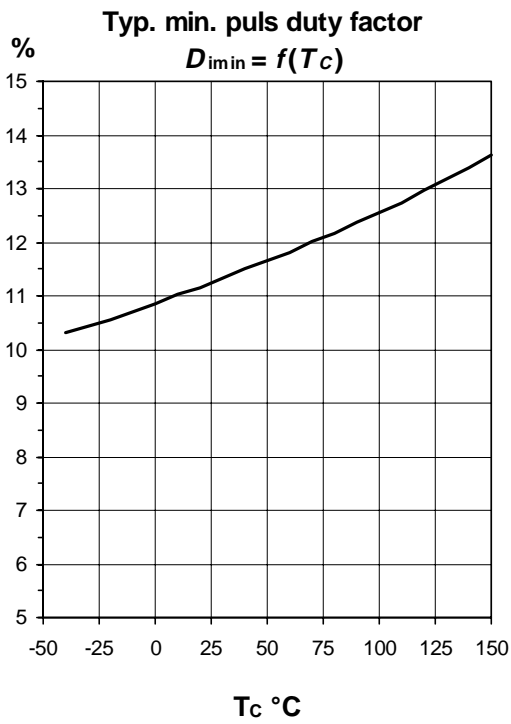
1) Shear and punch direction no burrs this surface

Dimensions in mm

Application Note









LittleDiode supplies new, hard to find or obsolete electronic components and semiconductors all over the world.

With over two million different components listed you are sure to find the part you need.

Feel free to visit us today at our online store:

LittleDiode.com

Looking forward to providing you with the best possible service.