

9097250 TOSHIBA (DISCRETE/OPTO)

67C 09305 D T-25-05

1S2093

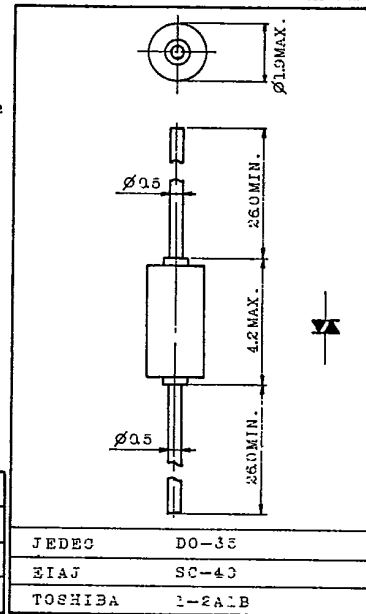
Silicon Planar Type
Trigger Diode

THYRISTOR, TRIAC TRIGGER APPLICATIONS.

FEATURES:

- . A symmetrical negative resistance characteristics in positive and negative direction, and a symmetrical switch characteristics for applied voltage with positive and negative.
- . The 1S2093 is intended for use in SCR or TRIAC phase control circuit for gate trigger and it makes circuit composition inexpensive.
- . Not only for thyristor trigger circuit but for trigger in general electronic circuits, the 1S2093 can compose block Oscillation.
- . Small package sealed hermetically with glass.

Unit in mm



MAXIMUM RATINGS (Ta=25°C)

CHARACTERISTIC	SYMBOL	RATING	UNIT
Repetitive Peak Current (Note 1)	I_{TRM}	2	A
Junction Temperature	T_j	125	°C
Storage Temperature Range	T_{stg}	-25 ~ 125	°C

Note 1 : $t=10\mu s$, $f=50Hz$, $T_a=25^\circ C$

JEDEC DO-35
EIAJ SC-40
TOSHIBA 1-2ALB
Weight : 0.14g

ELECTRICAL CHARACTERISTICS (Ta=25°C)

CHARACTERISTIC	SYMBOL	TEST CONDITION	MIN.	TYP.	MAX.	UNIT
Breakover Voltage	$V_{(BO)}$	Fig. 2	26	-	36	V
Breakover Current	$I_{(BO)}$	Fig. 2	-	-	50	μA
Peak Output Voltage	V_{OM}	$R_L=20\Omega$, $C=0.1\mu F$, Fig.1	4.5	-	-	V
Breakover Voltage Temperature Coefficient	α	$T_a=-25 \sim 125^\circ C$	-	0.1	-	%/°C
Breakover Voltage Symmetry	$ V_{(BO)1} $ - $ V_{(BO)2} $	Fig. 2	-	-	3.6	V

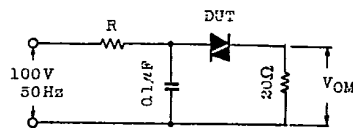


Fig. 1 PEAK OUTPUT VOLTAGE TEST CIRCUIT

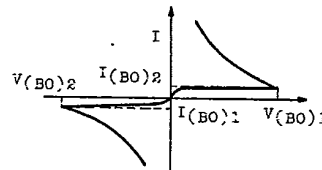


Fig. 2 V-I ELECTRICAL CHARACTERISTICS

This datasheet has been downloaded from:

www.DatasheetCatalog.com

Datasheets for electronic components.



LittleDiode supplies new, hard to find or obsolete electronic components and semiconductors all over the world.

With over two million different components listed you are sure to find the part you need.

Feel free to visit us today at our online store:

LittleDiode.com

Looking forward to providing you with the best possible service.