

BY712
 BY713
 BY714

56E D
))

7110826 0040518 167 PHIN

T-03-15

PHILIPS INTERNATIONAL

56E D 7110826 0040518 167 PHIN

RATINGS

Limiting values in accordance with the Absolute Maximum System (IEC 134)

		BY712	713	714
Working reverse voltage	V_{RW} max.	18	20	24 kV
Repetitive peak reverse voltage	V_{RRM} max.	22	24	30 kV
Non-repetitive peak reverse voltage $t < 10$ ms	V_{RSM} max.	22	24	30 kV
Average forward current (averaged over any 20 ms period)	$I_F(AV)$ max.	3		mA
Repetitive peak forward current*	I_{FRM} max.	500		mA
Storage temperature	T_{stg}	-65 to +120		°C
Junction temperature	T_j max.	120		°C

CHARACTERISTICS

Forward voltage** $I_F = 50$ mA; $T_j = 120$ °C	V_F	<	76	V
Reverse current $V_R = V_{RW}$; $T_j = 120$ °C	I_R	<	3	µA
Reverse recovery when switched from $I_F = 100$ mA to $V_R \geq 100$ V with $-dI_F/dt = 200$ mA/µs; $T_j = 25$ °C	Q_s	~	1	nC
recovery charge	t_{rr}	typ.	0,2	µs
recovery time	t_f	>	0,1	µs
fall time				

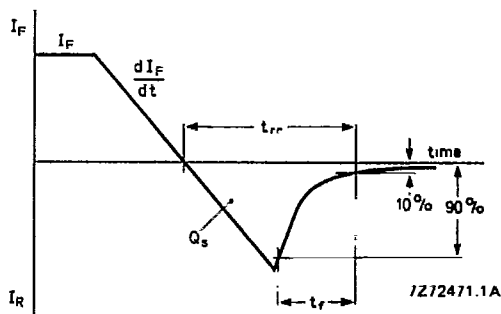


Fig. 2 Definitions of Q_s , t_{rr} and t_f .

* The device can withstand peak currents occurring during flashover in a picture tube.
 ** Measured under pulse conditions to avoid excessive dissipation.

T-03-15

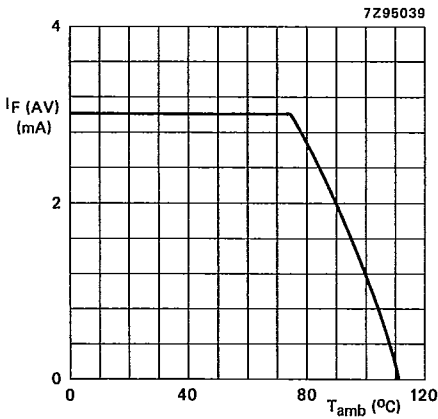


Fig. 3 Maximum permissible average forward current as a function of ambient temperature. $V_R = V_{RWmax}$. The diode should be mounted in such a way that $R_{th\ j-a} \leq 120\ K/W$.

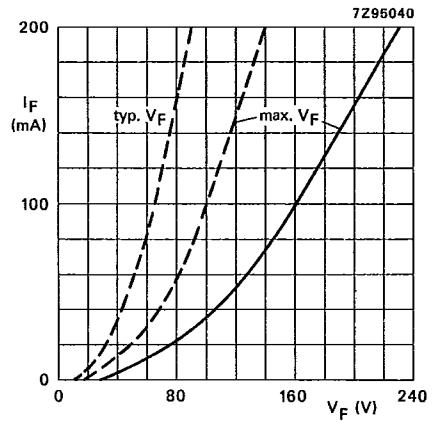


Fig. 4 ——— $T_j = 25\ ^\circ C$; - - - - $T_j = 120\ ^\circ C$.

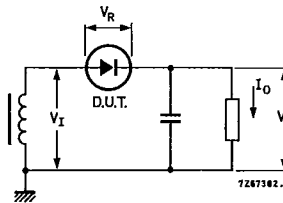


Fig. 5 Typical operation circuit.

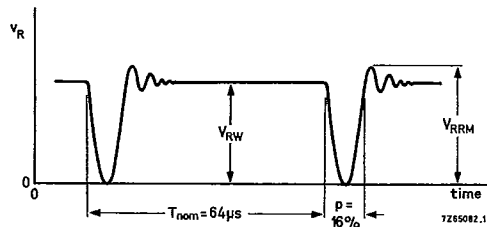


Fig. 6 Typical applied voltage.

This datasheet has been downloaded from:

www.DatasheetCatalog.com

Datasheets for electronic components.



LittleDiode supplies new, hard to find or obsolete electronic components and semiconductors all over the world.

With over two million different components listed you are sure to find the part you need.

Feel free to visit us today at our online store:

LittleDiode.com

Looking forward to providing you with the best possible service.