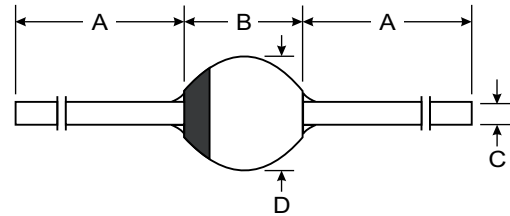


### Features

- Hermetically Sealed Glass Body Construction
- Controlled Avalanche Characteristics
- Super-Fast Switching for High Efficiency
- High Current Capability and Low Forward Voltage Drop
- Surge Overload Rating to 90A Peak
- Low Reverse Leakage Current



### Mechanical Data

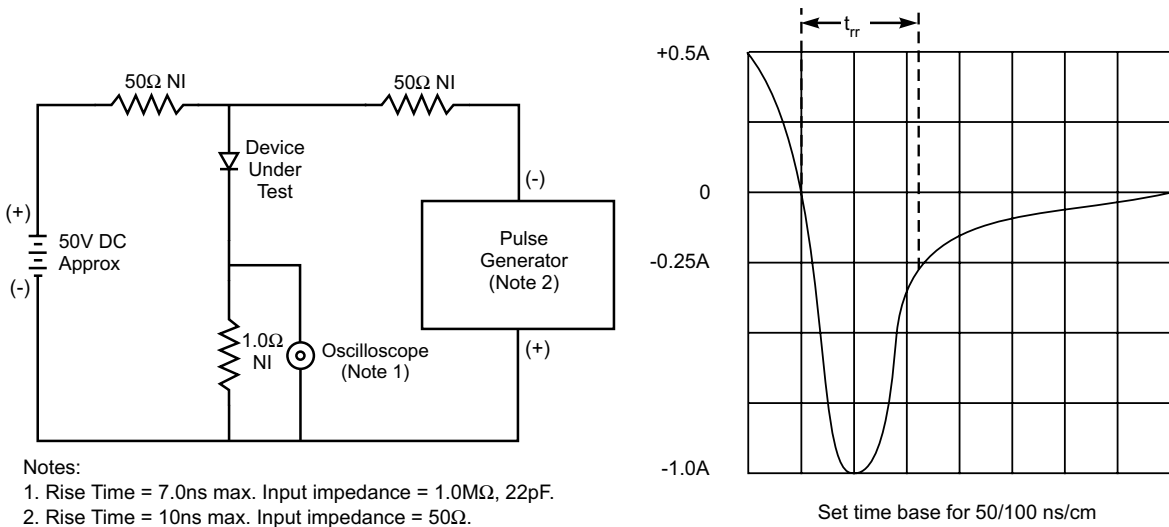
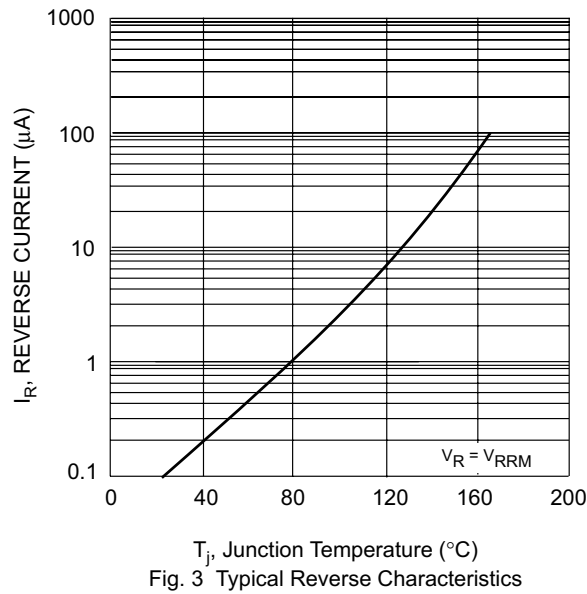
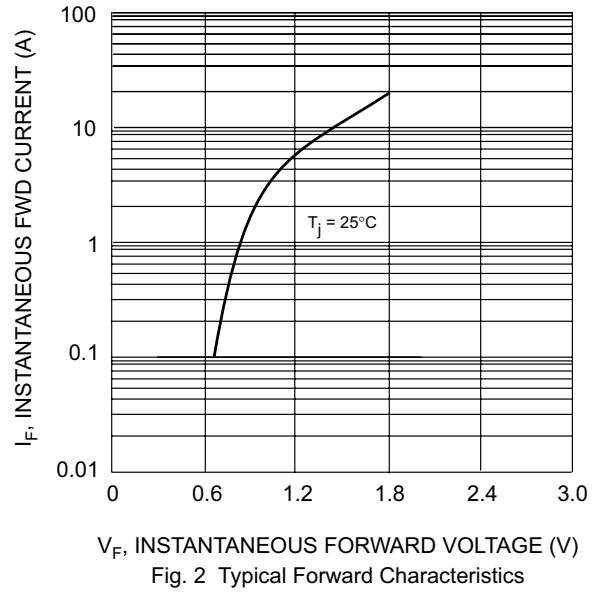
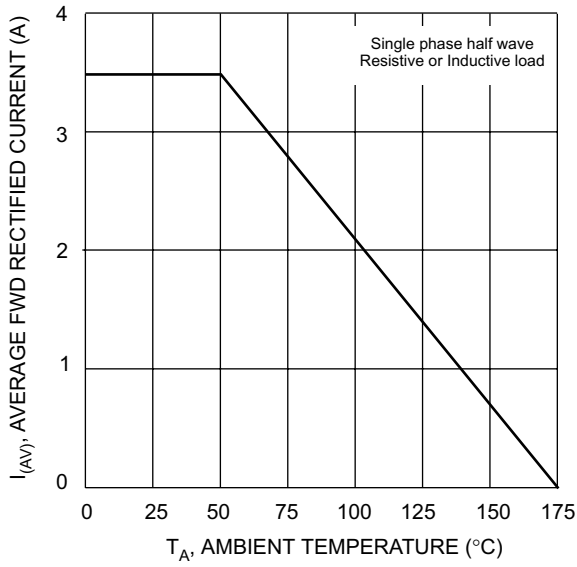
- Case: SOD-64, Glass
- Terminals: Plated Leads Solderable per MIL-STD-202, Method 208
- Polarity: Cathode Band
- Weight: 1.0 grams (approx.)
- Mounting Position: Any
- Marking: Type Number

SOD-64		
Dim	Min	Max
A	26.0	—
B	—	4.2
C	—	1.35
D	—	4.3
All Dimensions in mm		

### Maximum Ratings and Electrical Characteristics @ $T_j = 25^\circ\text{C}$ unless otherwise specified

Characteristic	Symbol	BYV28/50	BYV28/100	BYV28/150	BYV28/200	Unit
Peak Repetitive Reverse Voltage	$V_{RRM}$	50	100	150	200	V
Working Peak Reverse Voltage	$V_{RWM}$					
DC Blocking Voltage	$V_R$					
RMS Reverse Voltage	$V_{R(RMS)}$	35	70	100	140	V
Non-Repetitive Peak Reverse Voltage	$V_{RSM}$	55	110	165	220	V
Average Rectified Output Current (Note 1)	$I_O$	3.5				A
Non-Repetitive Peak Forward Surge Current 8.3ms single half sine-wave superimposed on rated load (JEDEC Method)	$I_{FSM}$	90				A
Repetitive Forward Surge Current	$I_{FRM}$	25				A
Forward Voltage @ $I_F = 5.0\text{A}$	$V_{FM}$	1.1				V
Peak Reverse Current @ $T_j = 25^\circ\text{C}$ at Rated DC Blocking Voltage @ $T_j = 165^\circ\text{C}$	$I_{RM}$	1.0 150				$\mu\text{A}$
Non-Repetitive Reverse Avalanche Energy $I_R = 0.6\text{A}$ Inductive Load @ $T_j = 175^\circ\text{C}$	$E_{RSM}$	20				mJ
Reverse Recovery Time (Note 2)	$t_{rr}$	30				ns
Typical Thermal Resistance Junction to Ambient (Note 1)	$R_{\theta JA}$	25				K/W
Operating and Storage Temperature Range	$T_j, T_{STG}$	-65 to +175				$^\circ\text{C}$

Notes: 1. Leads maintained at ambient temperature at a distance of 10mm from the case.  
 2. Measured with  $I_F = 0.5\text{A}$ ,  $I_R = 1.0\text{A}$ ,  $t_{rr} = 0.25\text{A}$ . See Figure 4.



This datasheet has been downloaded from:

[www.DatasheetCatalog.com](http://www.DatasheetCatalog.com)

Datasheets for electronic components.



LittleDiode supplies new, hard to find or obsolete electronic components and semiconductors all over the world.

With over two million different components listed you are sure to find the part you need.

Feel free to visit us today at our online store:

[LittleDiode.com](http://LittleDiode.com)

Looking forward to providing you with the best possible service.