

SOT23 NPN SILICON PLANAR HIGH SPEED SWITCHING TRANSISTORS

FMMT2369 FMMT2369A

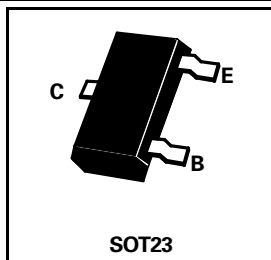
ISSUE 3 – AUGUST 1995

APPLICATIONS

These devices are suitable for use in high speed, low current switching applications

PARTMARKING DETAILS

FMMT2369 - 1J
FMMT2369R - 9R
FMMTA2369A - P5
FMMTA2369AR - 9A



ABSOLUTE MAXIMUM RATINGS.

PARAMETER	SYMBOL	VALUE	UNIT
Collector-Base Voltage	V_{CBO}	40	V
Collector-Emitter Voltage	V_{CES}	40	V
Collector-Emitter Voltage	V_{CEO}	15	V
Emitter-Base Voltage	V_{EBO}	4.5	V
Continuous Collector Current	I_C	200	mA
Power Dissipation at $T_{amb}=25^{\circ}C$	P_{tot}	330	mW
Operating and Storage Temperature Range	$T_j; T_{stg}$	-55 to +150	$^{\circ}C$

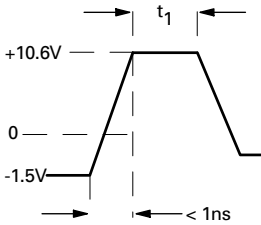
ELECTRICAL CHARACTERISTICS (at $T_{amb} = 25^{\circ}C$ unless otherwise stated).

PARAMETER	SYMBOL	FMMT2369		FMMT2369A		UNIT	CONDITIONS.
		MIN.	MAX.	MIN.	MAX.		
Collector-Base Breakdown Voltage	$V_{(BR)CBO}$	40		40		V	$I_C=10\mu A, I_E=0$
Collector-Emitter Breakdown Voltage	$V_{(BR)CEO}$	15		15		V	$I_C=10mA, I_B=0^*$
	$V_{(BR)CES}$	40		40		V	$I_C=10\mu A, V_{BE}=0$
Emitter-Base Breakdown Voltage	$V_{(BR)EBO}$	4.5		4.5		V	$I_E=10\mu A, I_C=0$
Collector Cut-Off Current	I_{CBO}		400		25	nA	$V_{CB}=20V, I_E=0$
Collector-Emitter Saturation Voltage	$V_{CE(sat)}$		0.25		0.20	V	$I_C=10mA, I_B=1mA^*$
Base-Emitter Saturation Voltage	$V_{BE(sat)}$	0.7	0.85	0.7	0.85	V	$I_C=10mA, I_B=1mA^*$
Static Forward Current Transfer Ratio	h_{FE}	40 20 20	120	40 20	120		$I_C=10mA, V_{CE}=1V^*$ $I_C=10mA, V_{CE}=1V, T_{amb}=-55^{\circ}C^*$ $I_C=100mA, V_{CE}=1V^*$ $I_C=100mA, V_{CE}=2V^*$
Output Capacitance	C_{obo}		4		4	pF	$V_{CB}=5V, I_E=0, f=140KHz$
Turn-on Time	t_{on}		12		12	ns	$V_{CC}=3V, V_{BE(off)}=1.5V, I_C=10mA, I_{B1}=3mA$ (See t_{ON} circuit)
Turn-off Time	t_{off}		18		18	ns	$V_{CC}=3V, I_C=10mA, I_{B1}=3mA, I_{B2}=1.5mA$ (See t_{OFF} circuit)
Storage Time	t_s		13		13	ns	$I_C=I_{B1}=I_{B2}=10mA$ (See Storage test circuit)

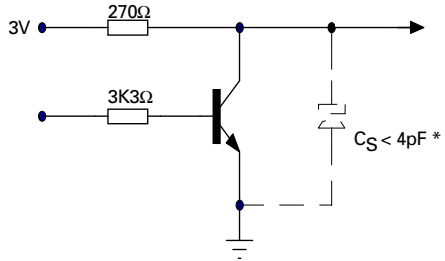
*Measured under pulsed conditions. Pulse width=300 μs . Duty cycle $\leq 2\%$
Spice parameter data is available upon request for this device

FMMT2369 FMMT2369A

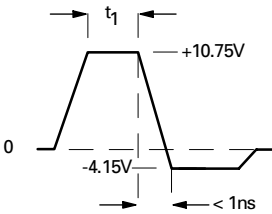
t_{ON} CIRCUIT



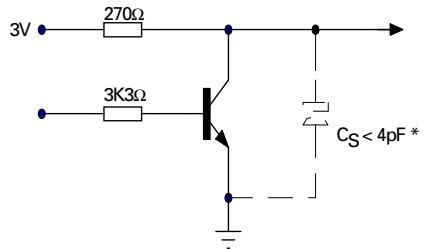
Pulse width (t₁)=300ns
Duty cycle = 2%



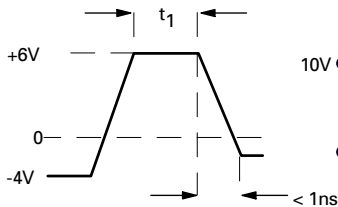
t_{OFF} CIRCUIT



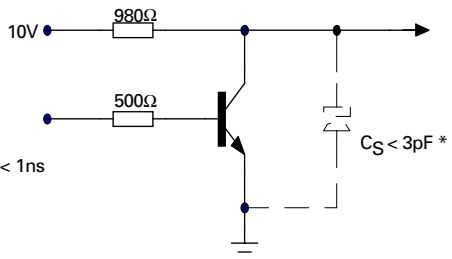
Pulse width (t₁)=300ns
Duty cycle = 2%



STORAGE TEST CIRCUIT



Pulse width (t₁)=300ns
Duty cycle = 2%



* Total shunt capacitance of test jig and connectors



LittleDiode supplies new, hard to find or obsolete electronic components and semiconductors all over the world.

With over two million different components listed you are sure to find the part you need.

Feel free to visit us today at our online store:

LittleDiode.com

Looking forward to providing you with the best possible service.