

FDG6342L

Integrated Load Switch

Features

- Max $r_{DS(on)}$ = 150mΩ at $V_{GS} = 4.5V$, $I_D = -1.5A$
- Max $r_{DS(on)}$ = 195mΩ at $V_{GS} = 2.5V$, $I_D = -1.3A$
- Max $r_{DS(on)}$ = 280mΩ at $V_{GS} = 1.8V$, $I_D = -1.1A$
- Max $r_{DS(on)}$ = 480mΩ at $V_{GS} = 1.5V$, $I_D = -0.9A$
- Control MOSFET (Q1) includes Zener protection for ESD ruggedness (>4KV Human body model)
- High performance trench technology for extremely low $r_{DS(on)}$
- Compact industry standard SC70-6 surface mount package
- RoHS Compliant

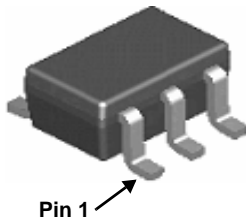


General Description

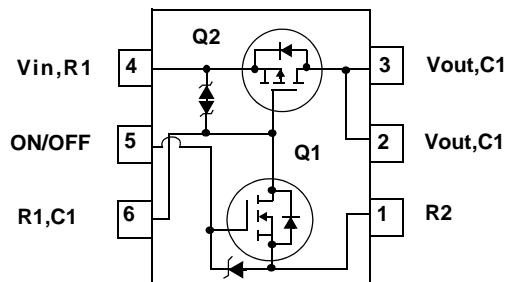
This device is particularly suited for compact power management in portable electronic equipment where 2.5V to 8V input and 1.5A output current capability are needed. This load switch integrates a small N-Channel power MOSFET (Q1) that drives a large P-Channel power MOSFET (Q2) in one tiny SC70-6 package.

Applications

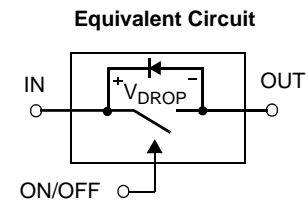
- Power management
- Load switch



SC70-6



See Application Circuit



MOSFET Maximum Ratings $T_A = 25^\circ\text{C}$ unless otherwise noted

Symbol	Parameter	Ratings	Units
V_{IN}	Gate to Source Voltage (Q2)	±8	V
$V_{ON/OFF}$	Gate to Source Voltage (Q1)	-0.5 to 8	V
I_{Load}	Load Current -Continuous	(Note 2)	-1.5
	-Pulsed	(Note 2)	-6
P_D	Power Dissipation for Single Operation	(Note 1a)	0.36
		(Note 1b)	0.3
T_J, T_{STG}	Operating and Storage Junction Temperature Range	-55 to +150	°C

Thermal Characteristics

$R_{\theta JA}$	Thermal Resistance, Junction to Ambient Single operation	(Note 1a)	350	°C/W
$R_{\theta JA}$	Thermal Resistance, Junction to Ambient Single operation	(Note 1b)	415	

Package Marking and Ordering Information

Device Marking	Device	Package	Reel Size	Tape Width	Quantity
.2L	FDG6342L	SC70-6	7"	8mm	3000units

Electrical Characteristics $T_J = 25^\circ\text{C}$ unless otherwise noted

Symbol	Parameter	Test Conditions	Min	Typ	Max	Units
--------	-----------	-----------------	-----	-----	-----	-------

Off Characteristics

BV_{IN}	V_{IN} Breakdown Voltage	$I_D = -250\mu\text{A}$, $V_{ON/OFF} = 0\text{V}$	8			V
I_{Load}	Zero Gate Voltage Drain Current	$V_{IN} = -6.4\text{V}$, $V_{ON/OFF} = 0\text{V}$			-1	μA
I_{FL}	Leakage Current, Forward	$V_{IN} = 8\text{V}$, $V_{ON/OFF} = 0\text{V}$			10	μA
I_{RL}	Leakage Current, Reverse	$V_{IN} = -8\text{V}$, $V_{ON/OFF} = 0\text{V}$			-10	μA

On Characteristics (note 2)

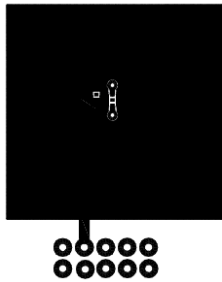
$V_{ON/OFF(th)}$	Gate Threshold Voltage	$V_{IN} = V_{ON/OFF}$, $I_D = -250\mu\text{A}$	0.65	0.8	1.5	V
$r_{DS(on)}$	Static Drain to Source On Resistance (Q2)	$V_{IN} = 4.5\text{V}$, $I_D = -1.5\text{A}$		125	150	$\text{m}\Omega$
		$V_{IN} = 2.5\text{V}$, $I_D = -1.3\text{A}$		150	195	
		$V_{IN} = 1.8\text{V}$, $I_D = -1.1\text{A}$		200	280	
		$V_{IN} = 1.5\text{V}$, $I_D = -0.9\text{A}$		250	480	
		$V_{IN} = 4.5\text{V}$, $I_D = 0.4\text{A}$		2.6	4.0	
Static Drain to Source On Resistance (Q1)	$V_{IN} = 2.7\text{V}$, $I_D = 0.2\text{A}$	3.3	5.0			

Drain-Source Diode Characteristics

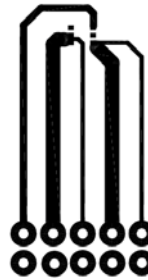
I_S	Maximum Continuous Drain to Source Diode Forward Current				-0.25	V	
V_{SD}	Source to Drain Diode Forward Voltage	$V_{ON/OFF} = 0\text{V}$, $I_S = -0.25\text{A}$ (Note 2)			-0.6	-1.2	V

NOTES:

- $R_{\theta JA}$ is determined with the device mounted on a 1 in² pad 2 oz copper pad on a 1.5 x 1.5 in. board of FR-4 material. $R_{\theta JC}$ is guaranteed by design while $R_{\theta JA}$ is determined by the user's board design.



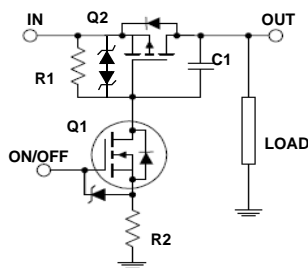
a. 350°C/W when mounted on a 1 in² pad of 2 oz copper.



b. 415°C/W when mounted on a minimum pad of 2 oz copper.

- Pulse Test: Pulse Width < 300 μs , Duty cycle < 2.0%.

FDG6342L Load Switch Application circuit



External Component Recommendation:

For additional in-rush current control, R2 and C1 can be added. For more information, see application note AN1030

Typical Characteristics $T_J = 25^\circ\text{C}$ unless otherwise noted

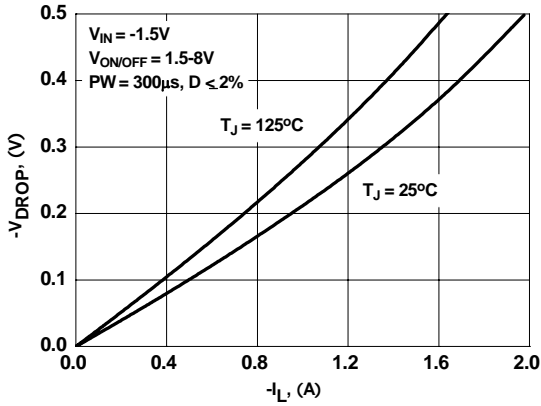


Figure 1. Conduction Voltage Drop Variation with Load Current.

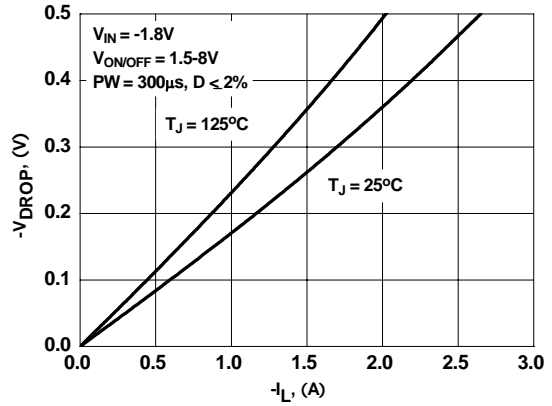


Figure 2. Conduction Voltage Drop Variation with Load Current.

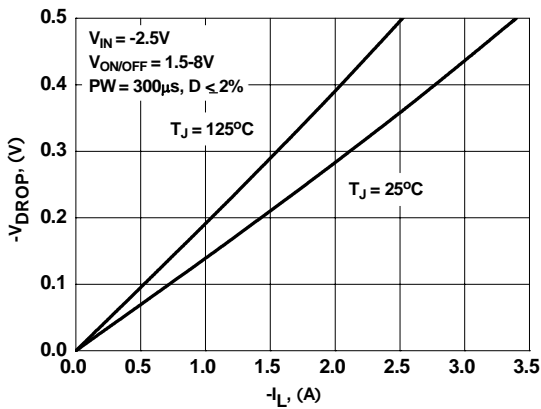


Figure 3. Conduction Voltage Drop Variation with Load Current.

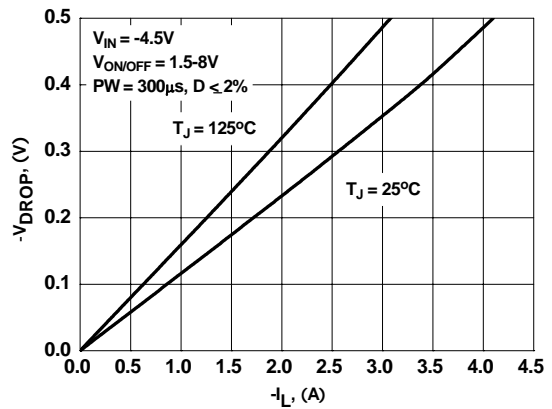


Figure 4. Conduction Voltage Drop Variation with Load Current.

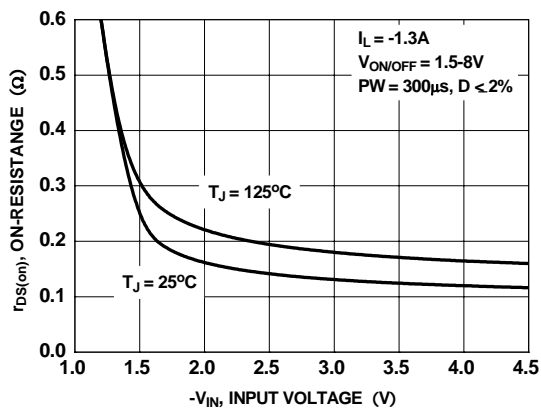


Figure 5. On-Resistance Variation With Input Voltage

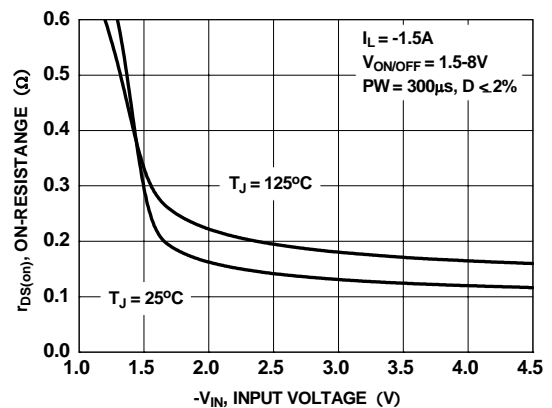





Figure 6. On-Resistance Variation With Input Voltage



TRADEMARKS

The following includes registered and unregistered trademarks and service marks, owned by Fairchild Semiconductor and/or its global subsidiaries, and is not intended to be an exhaustive list of all such trademarks.

- | | | | |
|---|---|----------------------------|-------------------------------|
| ACEx® | FPS™ | PDP-SPM™ | SupreMOS™ |
| Build it Now™ | FRFET® | Power220® | SyncFET™ |
| CorePLUS™ | Global Power Resource SM | POWEREDGE® | SYSTEM ®
GENERAL |
| CROSSVOLT™ | Green FPS™ | Power-SPM™ | The Power Franchise® |
| CTL™ | Green FPS™ e-Series™ | PowerTrench® | the power
franchise |
| Current Transfer Logic™ | GTO™ | Programmable Active Droop™ | TinyBoost™ |
| EcoSPARK® | <i>i-Lo</i> ™ | QFET® | TinyBuck™ |
| EZSWITCH™ * | IntelliMAX™ | QST™ | TinyLogic® |
|  ™ | ISOPLANAR™ | QT Optoelectronics™ | TINYOPTO™ |
|  ® | MegaBuck™ | Quiet Series™ | TinyPower™ |
| Fairchild Semiconductor® | MICROCOUPLER™ | RapidConfigure™ | TinyPWM™ |
| FACT Quiet Series™ | MicroFET™ | SMART START™ | TinyWire™ |
| FACT® | MicroPak™ | SPM® | µSerDes™ |
| FAST® | MillerDrive™ | STEALTH™ | UHC® |
| FastvCore™ | Motion-SPM™ | SuperFET™ | Ultra FRFET™ |
| FlashWriter® * | OPTOLOGIC® | SuperSOT™-3 | UniFET™ |
| | OPTOPLANAR® | SuperSOT™-6 | VCX™ |
| |  ® | SuperSOT™-8 | |

* EZSWITCH™ and FlashWriter® are trademarks of System General Corporation, used under license by Fairchild Semiconductor.

DISCLAIMER

FAIRCHILD SEMICONDUCTOR RESERVES THE RIGHT TO MAKE CHANGES WITHOUT NOTICE TO ANY PRODUCTS HEREIN TO IMPROVE RELIABILITY, FUNCTION, OR DESIGN. FAIRCHILD DOES NOT ASSUME ANY LIABILITY ARISING OUT OF THE APPLICATION OR USE OF ANY PRODUCT OR CIRCUIT DESCRIBED HEREIN; NEITHER DOES IT CONVEY ANY LICENSE UNDER ITS PATENT RIGHTS, NOR THE RIGHTS OF OTHERS. THESE SPECIFICATIONS DO NOT EXPAND THE TERMS OF FAIRCHILD'S WORLDWIDE TERMS AND CONDITIONS, SPECIFICALLY THE WARRANTY THEREIN, WHICH COVERS THESE PRODUCTS.

LIFE SUPPORT POLICY

FAIRCHILD'S PRODUCTS ARE NOT AUTHORIZED FOR USE AS CRITICAL COMPONENTS IN LIFE SUPPORT DEVICES OR SYSTEMS WITHOUT THE EXPRESS WRITTEN APPROVAL OF FAIRCHILD SEMICONDUCTOR CORPORATION.

As used herein:

- Life support devices or systems are devices or systems which, (a) are intended for surgical implant into the body or (b) support or sustain life, and (c) whose failure to perform when properly used in accordance with instructions for use provided in the labeling, can be reasonably expected to result in a significant injury to the user.
- A critical component in any component of a life support, device or system whose failure to perform can be reasonably expected to cause the failure of the life support device or system, or to affect its safety or effectiveness.

PRODUCT STATUS DEFINITIONS

Definition of Terms

Datasheet Identification	Product Status	Definition
Advance Information	Formative or In Design	This datasheet contains the design specifications for product development. Specifications may change in any manner without notice.
Preliminary	First Production	This datasheet contains preliminary data; supplementary data will be published at a later date. Fairchild Semiconductor reserves the right to make changes at any time without notice to improve design.
No Identification Needed	Full Production	This datasheet contains final specifications. Fairchild Semiconductor reserves the right to make changes at any time without notice to improve design.
Obsolete	Not In Production	This datasheet contains specifications on a product that has been discontinued by Fairchild Semiconductor. The datasheet is printed for reference information only.



LittleDiode supplies new, hard to find or obsolete electronic components and semiconductors all over the world.

With over two million different components listed you are sure to find the part you need.

Feel free to visit us today at our online store:

LittleDiode.com

Looking forward to providing you with the best possible service.