

Dual Pico Amp Diodes



DPAD1 / DPAD2 / DPAD5 / DPAD10 / DPAD20 / DPAD50 / DPAD100 SSTDPAD5 / SSTDPAD10 / SSTDPAD20 / SSTDPAD50 / SSTDPAD100

FEATURES

- High OFF Isolation. 1 pA max DPAD1
- Excellent Isolation between diodes. Typical 20 fA
- Matched Capacitance

APPLICATIONS

- Op Amp Protection Devices
- Diode Switching
- High Impedance Protection

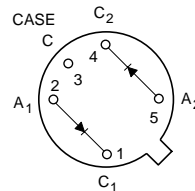
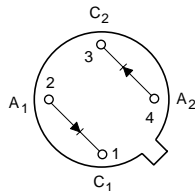
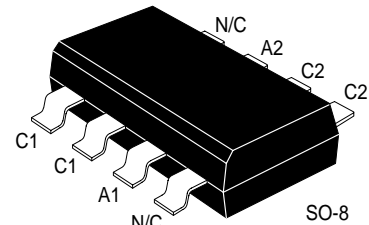
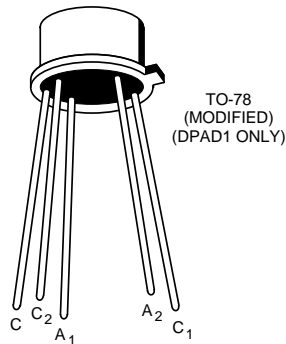
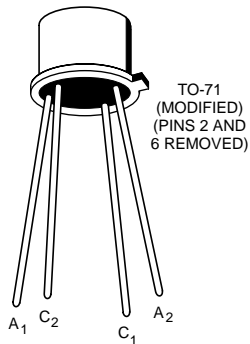
DESCRIPTION

Calogic's ultra low leakage dual pico amp diodes out perform conventional diodes for applications where reverse current (leakage) is critical and must be kept at a minimum. The devices have very low capacitance and are also fast switching. Housed in a compact dual hermetic package and a plastic surface mount SO-8 this product is also available in chip form for hybrid uses.

ORDERING INFORMATION

Part	Package	Temperature Range
DPAD1	Hermetic TO-78	-55 to +150°C
DPAD2/50	Hermetic TO-71	-55 to +150°C
SSTDPAD5/100	Plastic SO-8	-55 to +150°C
XDPAD5/100	Sorted Chips in Carriers	-55 to +150°C

PIN CONFIGURATION

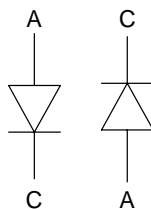


CJ1, CJ2, CJ4

BOTTOM VIEW (ALTERNATE)

BOTTOM VIEW

SCHEMATIC DIAGRAM

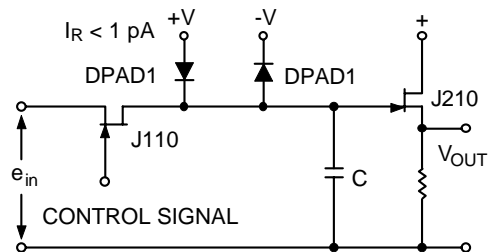
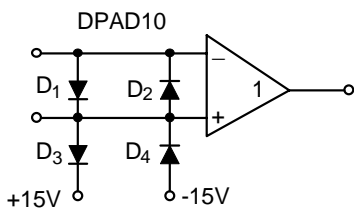


ABSOLUTE MAXIMUM RATINGS (25°C)

Forward Gate Current, Each Side	50 mA
Total Device Dissipation @ T _A = 25°C	
Derate 4.0 mW/°C to 125°C	400 mW
Storage Temperature Range	-55 to +125°C
Lead Temperature (1/16" from case for 10 seconds)	300°C

ELECTRICAL CHARACTERISTICS (25°C unless otherwise noted)

SYMBOL	CHARACTERISTICS	MIN	TYP	MAX	UNIT	TEST CONDITIONS	
STATIC							
I _R	Reverse Current			-1	pA	V _R = -20 V	DPAD1
				-2			DPAD2
				-5			DPAD5
				-10			DPAD10
				-20			DPAD20
				-50			DPAD50
				-100			DPAD100
BV _R	Breakdown Voltage (Reverse)	-45		-120	V	I _R = -1 μA	DPAD1, 2, 5
		-35					DPAD10, 20, 50, 100
V _F	Forward Voltage Drop		0.8	1.5		I _F = 5 mA	DPAD1, 2, 5, 10, 20, 50, 100
DYNAMIC							
C _R	Capacitance			0.8	pF	V _R = -5 V, f = 1 MHz	DPAD1, 2, 5
				2.0			DPAD10, 20, 50, 100
CR1 - CR2	Differential Capacitance		0.1	0.2	pF	V _{R1} = V _{R2} = -5 V, f = 1 MHz	DPAD1, 2, 5, 10, 20, 50, 100



APPLICATION

Operational Amplifier Protection. Input Differential Voltage limited to 0.8 V (typ) by DPADS D₁ and D₂ Common mode input voltage limited by DPADS D₃ and D₄ to ±15V.

Typical sample and hold circuit with clipping, DPAD diodes reduce offset voltages fed capacitively from the FET switch gate.



LittleDiode supplies new, hard to find or obsolete electronic components and semiconductors all over the world.

With over two million different components listed you are sure to find the part you need.

Feel free to visit us today at our online store:

LittleDiode.com

Looking forward to providing you with the best possible service.