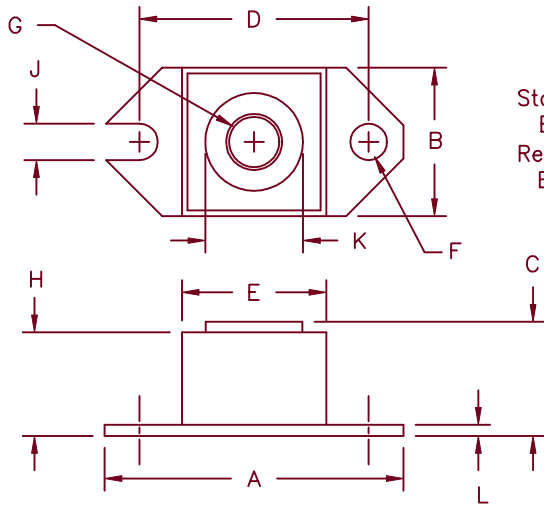


180 Amp Schottky OR'ing Rectifier HS18515



Std. Polarity
Base is cathode
Rev. Polarity
Base is anode

Dim.	Inches		Millimeter		Notes
	Minimum	Maximum	Minimum	Maximum	
A	1.52	1.56	38.86	39.62	
B	.725	.775	18.42	19.69	
C	.605	.625	15.37	15.88	
D	1.182	1.192	30.02	30.28	
E	.745	.755	18.92	19.18	Sq. Dia.
F	.152	.160	3.86	4.06	
G			1/4-20 UNC-2B		
H	.570	.580	14.49	14.73	
J	.156	.160	3.96	4.06	
K	.495	.505	12.57	12.83	Dia.
L	.120	.130	3.05	3.30	

Microsemi Catalog Number	Industry Part Number	Working Peak Reverse Voltage	Repetitive Peak Reverse Voltage
HS18515*	185NQ015	15V	15V

*Add Suffix R for Reverse Polarity

- Schottky Barrier Rectifier
- Guard ring reverse protection
- Optimized for OR'ing applications
- 125°C Operation ($V_r < 5V$)
- 0.29V $V_f @ 180A, 100^\circ C$

Electrical Characteristics

Average forward current	$I_F(AV)$ 180 Amps	$T_C = 80^\circ C, V_r = 5V$
Average forward current	$I_F(AV)$ 180 Amps	$T_C = 71^\circ C, V_r = 15V$
Maximum surge current	I_{FSM} 2500 Amp	8.3 ms, half sine $T_J = 100^\circ C$
Max repetitive peak reverse current	$I_R(OV)$ 2 Amps	$f = 1\text{ KHz}, 25^\circ C, 1\ \mu\text{sec square wave}$
Max peak forward voltage	V_{FM} 0.36 Volts	$I_{FM} = 180A: T_J = 25^\circ C^*$
Max peak forward voltage	V_{FM} 0.29 Volts	$I_{FM} = 180A: T_J = 100^\circ C^*$
Max peak reverse current	I_{RM} 2700 mA	$V_R = 5.0V, T_J = 100^\circ C^*$
Max peak reverse current	I_{RM} 5000 mA	$V_{RRM}, T_J = 100^\circ C^*$
Max peak reverse current	I_{RM} 50 mA	$V_R = 5.0V, T_J = 25^\circ C$
Max peak reverse current	I_{RM} 100 mA	$V_{RRM}, T_J = 25^\circ C$
Typical junction capacitance	C_J 14300 pF	$V_R = 5.0V, T_J = 25^\circ C$

*Pulse test: Pulse width 300 μsec , Duty cycle 2%

Thermal and Mechanical Characteristics

Storage temp range	T_{STG}	$-55^\circ C$ to $150^\circ C$
Operating junction temp range	T_J	$-55^\circ C$ to $125^\circ C$
Maximum thermal resistance	$R_{\theta JC}$	$0.3^\circ C/W$
Typical thermal resistance (greased)	$R_{\theta CS}$	$0.12^\circ C/W$ Case to sink
Terminal torque		35-40 inch pounds
Mounting torque		20-25 inch pounds
Weight		1.0 ounces (25.3 grams) Typical

HS18515

Figure 1
Typical Forward Characteristics

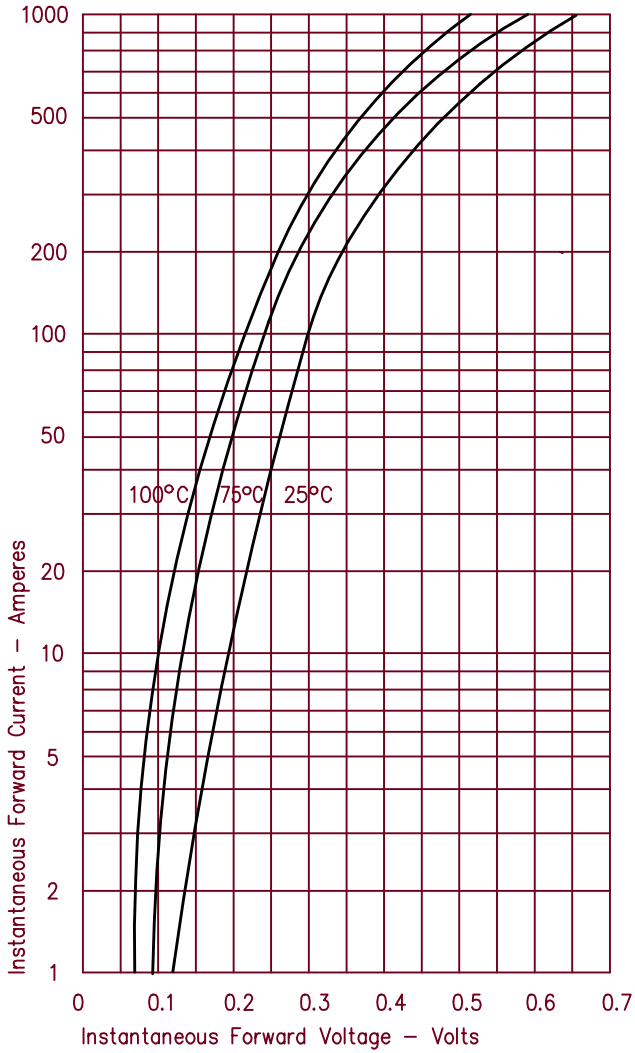


Figure 3
Typical Junction Capacitance

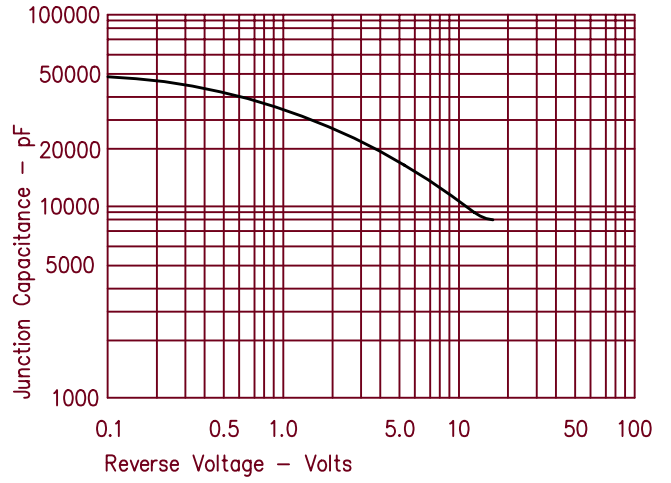


Figure 4
Forward Current Derating

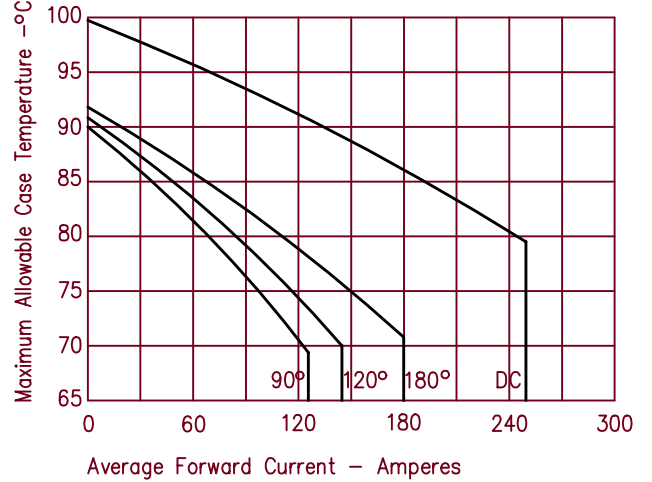


Figure 2
Typical Reverse Characteristics

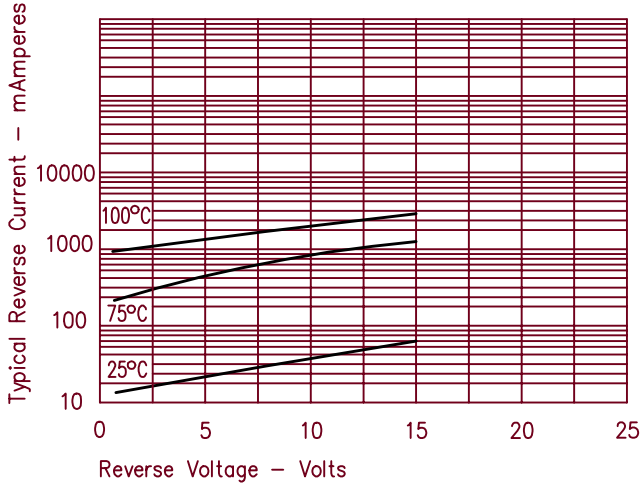
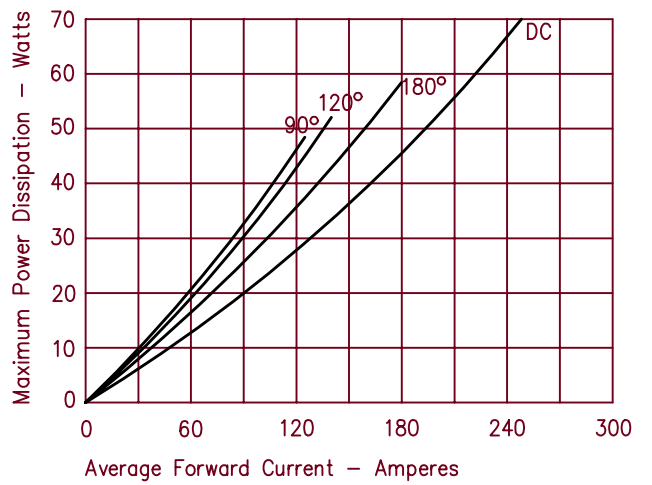


Figure 5
Maximum Forward Power Dissipation





LittleDiode supplies new, hard to find or obsolete electronic components and semiconductors all over the world.

With over two million different components listed you are sure to find the part you need.

Feel free to visit us today at our online store:

LittleDiode.com

Looking forward to providing you with the best possible service.