

ER2A THRU ER2J

SURFACE MOUNT SUPERFAST RECTIFIER VOLTAGE - 50 to 600 Volts CURRENT - 2.0 Amperes

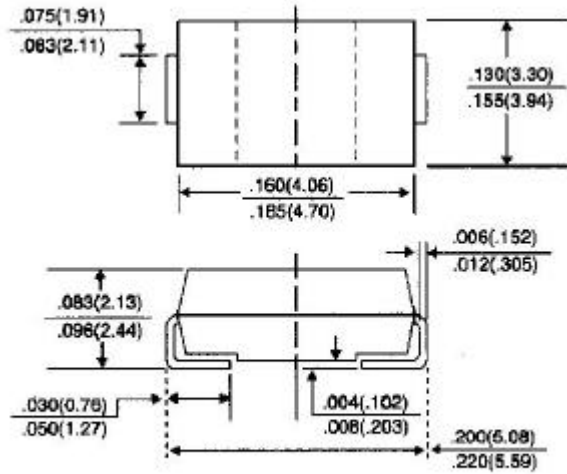
FEATURES

- For surface mounted applications
- Low profile package
- Built-in strain relief
- Easy pick and place
- Superfast recovery times for high efficiency
- Plastic package has Underwriters Laboratory

Flammability Classification 94V-O

- Glass passivated junction
- High temperature soldering:
260 /10 seconds at terminals

SMB/DO-214AA



Dimensions in inches and (millimeters)

MECHANICAL DATA

Case: JEDEC DO-214AA molded plastic

Terminals: Solder plated, solderable per MIL-STD-750,

Method 2026

Polarity: Indicated by cathode band

Standard packaging: 12mm tape (EIA-481)

Weight: 0.003 ounce, 0.093 gram

MAXIMUM RATINGS AND ELECTRICAL CHARACTERISTICS

Ratings at 25 °C ambient temperature unless otherwise specified.

Single phase, half wave, 60Hz, resistive or inductive load.

For capacitive load, derate current by 20%.

	SYMBOLS	ER2A	ER2B	ER2C	ER2D	ER2E	ER2G	ER2J	UNITS
Maximum Recurrent Peak Reverse Voltage	V_{RRM}	50	100	150	200	300	400	600	Volts
Maximum RMS Voltage	V_{RMS}	35	70	105	140	210	280	420	Volts
Maximum DC Blocking Voltage	V_{DC}	50	100	150	200	300	400	600	Volts
Maximum Average Forward Rectified Current, at $T_L=110$	$I_{(AV)}$	2.0							Amps
Peak Forward Surge Current 8.3ms single half sine-wave superimposed on rated load(JEDEC method)	I_{FSM}	50.0							Amps
Maximum Instantaneous Forward Voltage at 2.0A	V_F	0.95			1.25		1.7		Volts
Maximum DC Reverse Current $T_A=25$ At Rated DC Blocking Voltage $T_A=100$	I_R	5.0 150							A
Maximum Reverse Recovery Time (Note 1)	T_{RR}	35.0							nS
Typical Junction capacitance (Note 2)	C_J	25.0							pF
Typical Thermal Resistance (Note 3)	R_{JL}	20.0							/W
Operating and Storage Temperature Range	T_J, T_{STG}	-50 to +150							

NOTES:

1. Reverse Recovery Test Conditions: $I_F=0.5A$, $I_R=1.0A$, $I_{rr}=0.25A$
2. Measured at 1 MHz and Applied reverse voltage of 4.0 volts
3. $8.0mm^2$ (.013mm thick) land areas

RATING AND CHARACTERISTIC CURVES ER2A THRU ER2J

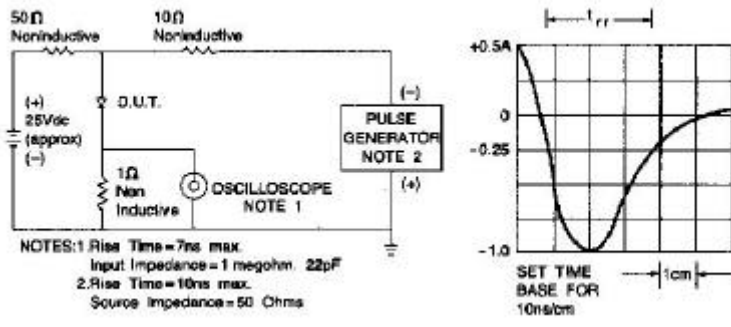


Fig. 1-REVERSE RECOVERY TIME CHARACTERISTIC AND TEST DIAGRAM

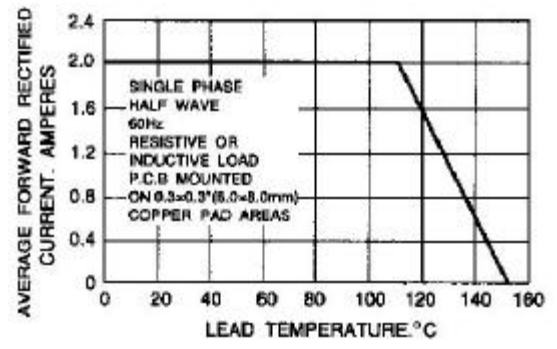


Fig. 2-MAXIMUM AVERAGE FORWARD CURRENT RATING

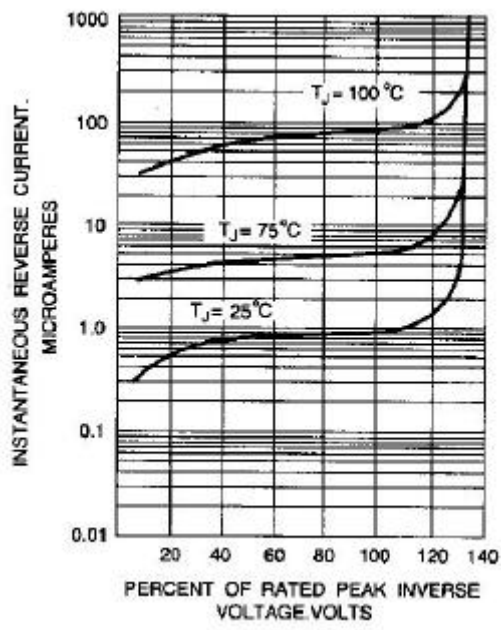


Fig. 3-TYPICAL REVERSE CHARACTERISTICS

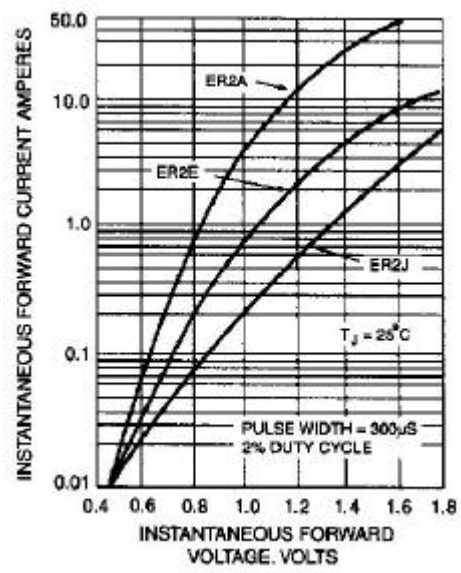


Fig. 4-TYPICAL FORWARD CHARACTERISTICS

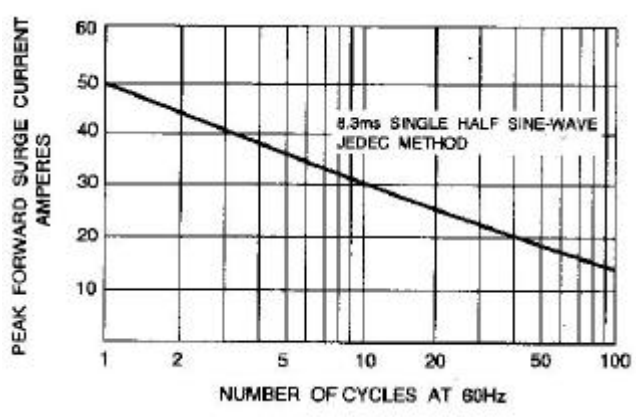


Fig. 5-MAXIMUM NON-REPETITIVE PEAK FORWARD SURGE CURRENT

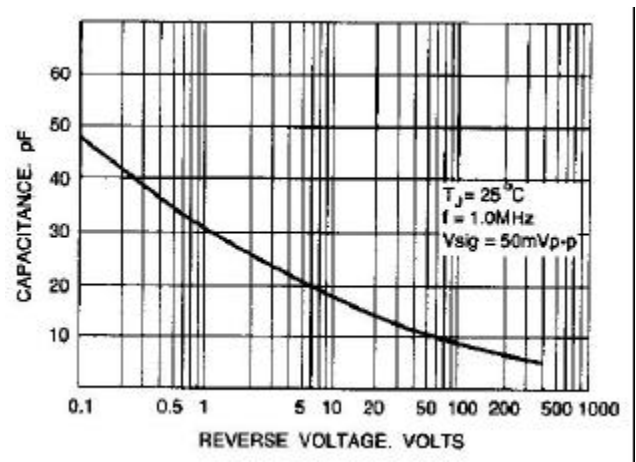


Fig. 6-TYPICAL JUNCTION CAPACITANCE

This datasheet has been downloaded from:

www.DatasheetCatalog.com

Datasheets for electronic components.



LittleDiode supplies new, hard to find or obsolete electronic components and semiconductors all over the world.

With over two million different components listed you are sure to find the part you need.

Feel free to visit us today at our online store:

LittleDiode.com

Looking forward to providing you with the best possible service.