



HER3001PT THRU HER3008PT

30.0 AMPS. Glass Passivated High Efficient Rectifiers



Voltage Range
50 to 1000 Volts
Current
30.0 Amperes

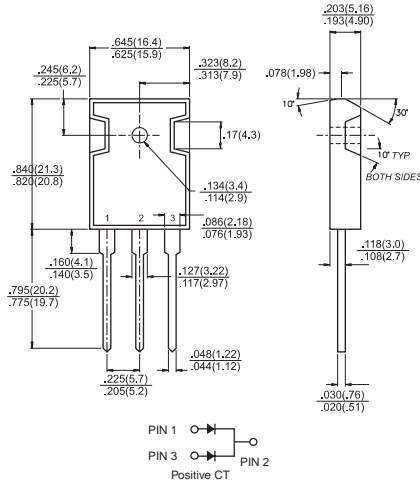
Features

- ✦ Dual rectifier construction, positive center-tap
- ✦ Plastic package has Underwriters Laboratory Flammability Classification 94V-O
- ✦ Glass passivated chip junctions
- ✦ Superfast recovery time, high voltage
- ✦ Low forward voltage, high current capability
- ✦ Low thermal resistance
- ✦ Low power loss, high efficiency
- ✦ High temperature soldering guaranteed: 260°C, .16"(4.06mm) from case for 10 seconds

Mechanical Data

- ✦ Cases: TO-3P/TO-247AD molded plastic
- ✦ Terminals: Leads solderable per MIL-STD-750. Method 2026
- ✦ Polarity: As marked
- ✦ Mounting position: Any
- ✦ Mounting torque: 10in-lbs. Max.
- ✦ Weight: 0.2 ounce, 5.6 grams

TO-3P/TO-247AD



Dimensions in inches and (millimeters)

Maximum Ratings and Electrical Characteristics

Rating at 25°C ambient temperature unless otherwise specified.

Single phase, half wave, 60 Hz, resistive or inductive load.

For capacitive load, derate current by 20%

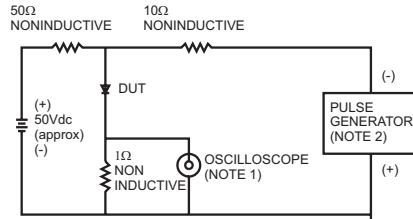
Type Number	Symbol	HER 3001PT	HER 3002PT	HER 3003PT	HER 3004PT	HER 3005PT	HER 3006PT	HER 3007PT	HER 3008PT	Units	
Maximum Recurrent Peak Reverse Voltage	V_{RRM}	50	100	200	300	400	600	800	1000	V	
Maximum RMS Voltage	V_{RMS}	35	70	140	210	280	420	560	700	V	
Maximum DC Blocking Voltage	V_{DC}	50	100	200	300	400	600	800	1000	V	
Maximum Average Forward Rectified Current @ $T_c = 100^\circ\text{C}$	$I_{(AV)}$	30.0								A	
Peak Forward Surge Current, 8.3 ms Single Half Sine-wave Superimposed on Rated Load (JEDEC method)	I_{FSM}	300								A	
Maximum Instantaneous Forward Voltage @ 15.0A	V_F	1.0			1.3		1.7			V	
Maximum DC Reverse Current @ $T_c = 25^\circ\text{C}$ at Rated DC Blocking Voltage @ $T_c = 125^\circ\text{C}$	I_R	10.0 500								uA uA	
Maximum Reverse Recovery Time (Note 2) @ $T_j = 25^\circ\text{C}$	T_{rr}	50					80				nS
Typical Junction Capacitance (Note 1)	C_j	175					145				pF
Operating Temperature Range	T_j	-55 to +150								°C	
Storage Temperature Range	T_{STG}	-55 to +150								°C	

Notes: 1. Measured at 1 MHz and Applied Reverse Voltage of 4.0 Volts.

2. Reverse Recovery Test Conditions: $I_F = 0.5A$, $I_R = 1.0A$, Recover to 0.25A.

RATINGS AND CHARACTERISTIC CURVES (HER3001PT THRU HER3008PT)

FIG. 1- REVERSE RECOVERY TIME CHARACTERISTIC AND TEST CIRCUIT DIAGRAM



NOTES: 1. Rise Time=7ns max. Input Impedance=1 megohm 22pf
2. Rise Time=10ns max. Source Impedance=50 ohms

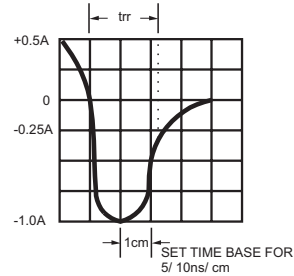


FIG. 2- MAXIMUM FORWARD CURRENT DERATING CURVE

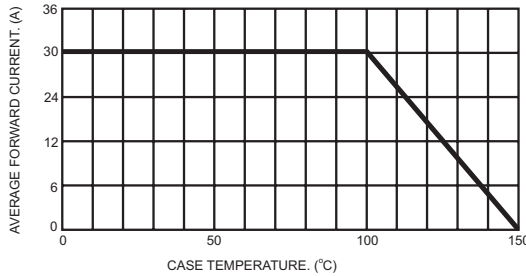


FIG. 3- TYPICAL REVERSE CHARACTERISTICS PER LEG

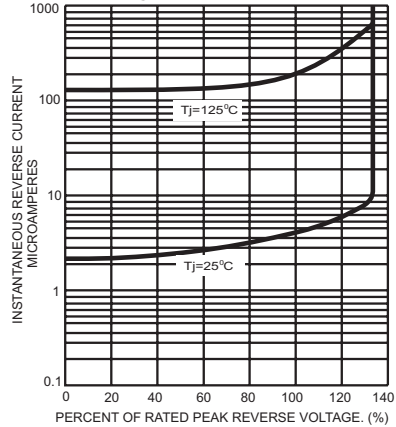


FIG. 4- MAXIMUM NON-REPETITIVE FORWARD SURGE CURRENT PER LEG

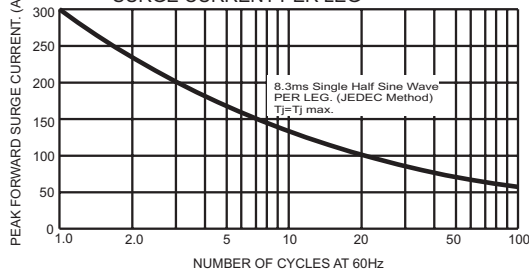


FIG. 6- TYPICAL INSTANTANEOUS FORWARD CHARACTERISTICS PER LEG

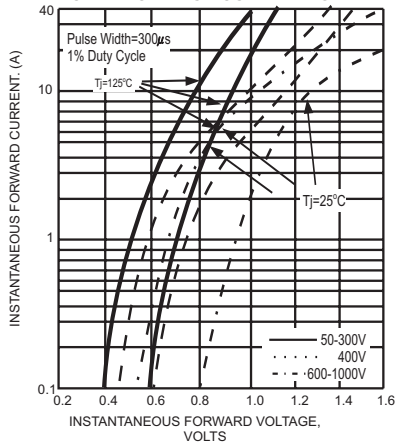
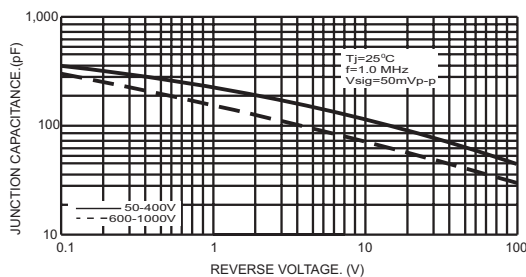


FIG. 5- TYPICAL JUNCTION CAPACITANCE PER LEG





LittleDiode supplies new, hard to find or obsolete electronic components and semiconductors all over the world.

With over two million different components listed you are sure to find the part you need.

Feel free to visit us today at our online store:

LittleDiode.com

Looking forward to providing you with the best possible service.