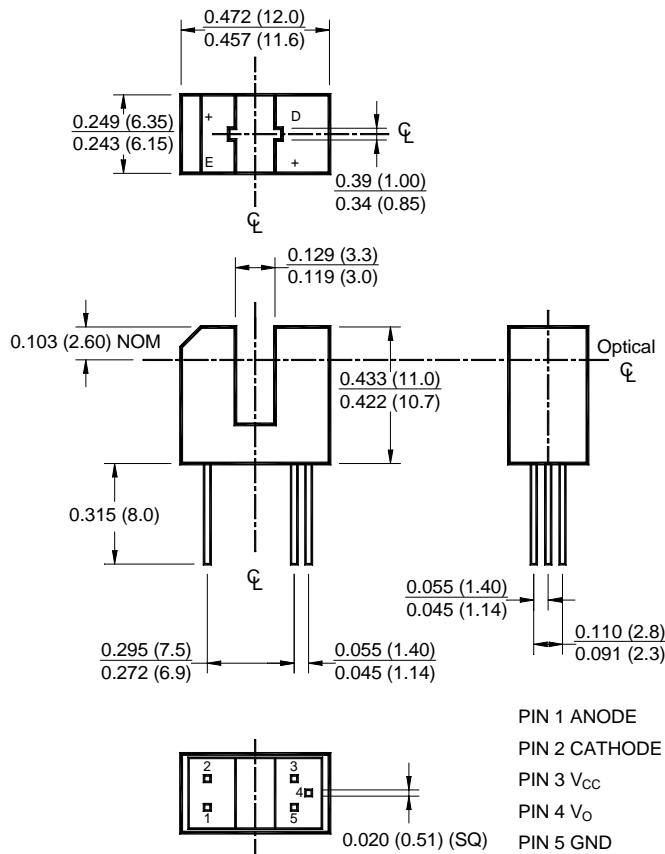
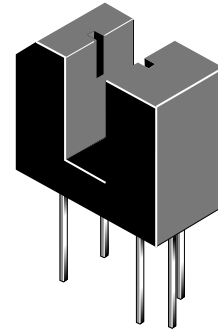


## PACKAGE DIMENSIONS



### NOTES:

1. Dimensions for all drawings are in inches (millimeters).
2. Tolerance of  $\pm .010$  (.25) on all non-nominal dimensions unless otherwise specified.
3. Lead cross section is controlled between .050 (1.27) from the seating plane and the end of the leads.

## FEATURES

- Black plastic housing
- Choice of inverter or buffer output functions
- Choice of open-collector or totem-pole output configuration
- No contact switching
- TTL/CMOS compatible output functions

## PART NUMBER DEFINITIONS

H22LTB	Totem-pole, buffer output
H22LTI	Totem-pole, inverter output
H22LOB	Open-collector, buffer output
H22LOI	Open-collector, inverter output

## NOTES (Applies to Max Ratings and Characteristics Tables.)

1. Derate power dissipation linearly 1.67 mW/°C above 25°C.
2. Derate power dissipation linearly 2.50 mW/°C above 25°C.
3. RMA flux is recommended.
4. Methanol or isopropyl alcohols are recommended as cleaning agents.
5. Soldering iron 1/16" (1.6mm) from housing.
6. As long as leads are not under any stress or spring tension.

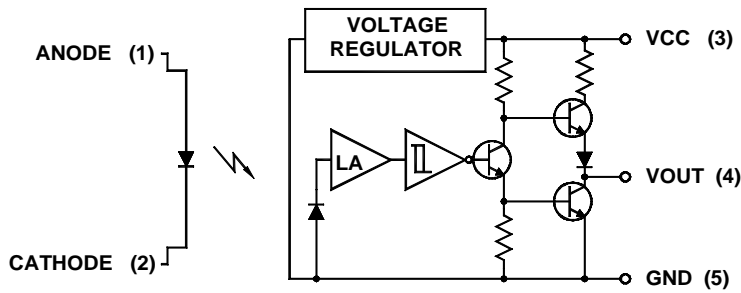
## ABSOLUTE MAXIMUM RATINGS (T<sub>A</sub> = 25°C unless otherwise specified)

Parameter	Symbol	Rating	Units
Operating Temperature	T <sub>OPR</sub>	-40 to +85	°C
Storage Temperature	T <sub>STG</sub>	-40 to +85	°C
Soldering Temperature (Iron) <sup>(3,4,5,6)</sup>	T <sub>SOL-I</sub>	240 for 5 sec	°C
Soldering Temperature (Flow) <sup>(3,4,6)</sup>	T <sub>SOL-F</sub>	260 for 10 sec	°C
<b>EMITTER</b>			
Continuous Forward Current	I <sub>F</sub>	50	mA
Reverse Voltage	V <sub>R</sub>	5	V
Power Dissipation <sup>(1)</sup>	P <sub>D</sub>	100	mW
<b>SENSOR</b>			
Output Current	I <sub>O</sub>	50	mA
Supply Voltage	V <sub>CC</sub>	4.0 to 16	V
Output Voltage	V <sub>O</sub>	30	V
Power Dissipation <sup>(1)</sup>	P <sub>D</sub>	150	mW

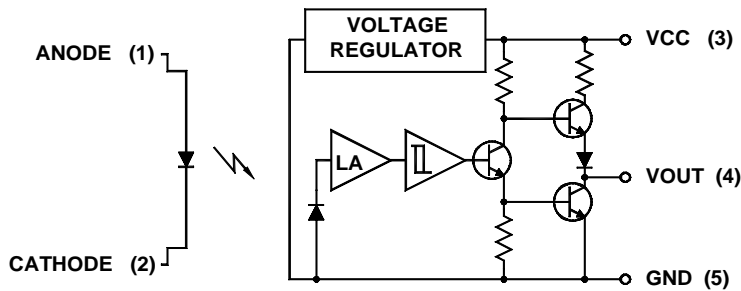
<b>ELECTRICAL / OPTICAL CHARACTERISTICS</b> ( $T_A = 25^\circ\text{C}$ )						
PARAMETER	TEST CONDITIONS	SYMBOL	MIN.	TYP.	MAX.	UNITS
Operating Supply Voltage	$V_{CC}$	$V_{CC}$	4.5		16	V
<b>INPUT DIODE</b>						
Forward Voltage	$I_F = 20\text{ mA}$	$V_F$	—		1.7	V
Reverse Leakage Current	$V_R = 5\text{ V}$	$I_R$	—		10	$\mu\text{A}$
<b>COUPLED</b>						
Operating Supply Current	$I_F = 15\text{ mA}$ or $0\text{ mA}$ , $V_{CC} = 16\text{ V}$	$I_{CC}$	—		5	mA
Low Level Output Voltage H22LTB, H22LOB	$I_F = 0\text{ mA}$ , $V_{CC} = 5\text{ V}$ , $R_L = 100\ \Omega$	$V_{OL}$	—		0.4	V
Low Level Output Voltage H22LTI, H22LOI	$I_F = 15\text{ mA}$ , $V_{CC} = 5\text{ V}$ , $R_L = 360\ \Omega$	$V_{OL}$	—		0.4	V
High Level Output Voltage H22LTB	$I_F = 15\text{ mA}$ , $V_{CC} = 5\text{ V}$ , $I_{OH} = -800\ \mu\text{A}$	$V_{OH}$	2.4		—	V
High Level Output Voltage H22LTI	$I_F = 0\text{ mA}$ , $V_{CC} = 5\text{ V}$ , $I_{OH} = -800\ \mu\text{A}$	$V_{OH}$	2.4		—	V
High Level Output Current H22LOB	$I_F = 0\text{ mA}$ , $V_{CC} = 5\text{ V}$ , $I_{OH} = -800\ \mu\text{A}$	$I_{OH}$			100	$\mu\text{A}$
High Level Output Current H22LOI	$I_F = 0\text{ mA}$ , $V_{CC} = 5\text{ V}$ , $V_{OH} = 30\text{ V}$	$I_{OH}$	—		100	$\mu\text{A}$
Turn on Threshold Current	$V_{CC} = 5\text{ V}$ , $R_L = 360\ \Omega$	$I_F(+)$	—		15	mA
Turn off Threshold Current	$V_{CC} = 5\text{ V}$ , $R_L = 360\ \Omega$	$I_F(-)$	0.50		—	mA
Hysteresis Ratio		$I_F(+)$ / $I_F(-)$		1.3		
Propagation Delay	$V_{CC} = 5\text{ V}$ , $R_L = 360\ \Omega$	$t_{PLH}$ , $t_{PHL}$		5		$\mu\text{s}$
Output Rise and Fall Time	$V_{CC} = 5\text{ V}$ , $R_L = 360\ \Omega$	$t_r$ , $t_f$		70		ns

<b>INPUT/OUTPUT TABLE</b>		
Part Number	LED	Output
H22LTB	On	High
H22LTB	Off	Low
H22LTI	On	Low
H22LTI	Off	High
H22LOB	On	High
H22LOB	Off	Low
H22LOI	On	Low
H22LOI	Off	High

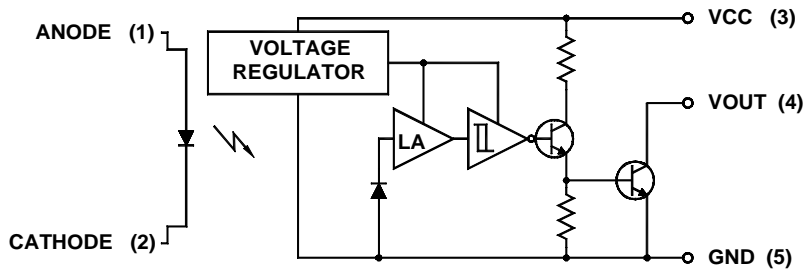
### CIRCUIT SCHEMATICS



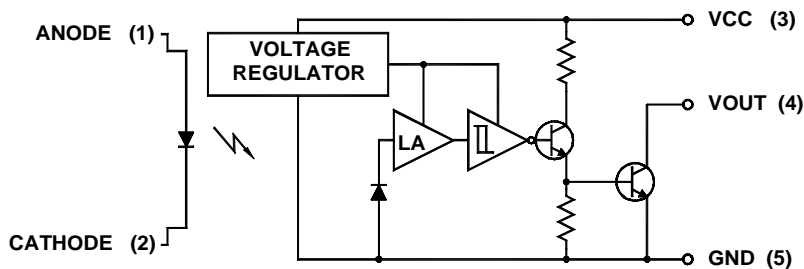
**H22LTB**  
Totem-Pole Output Buffer



**H22LTI**  
Totem-Pole Output inverter

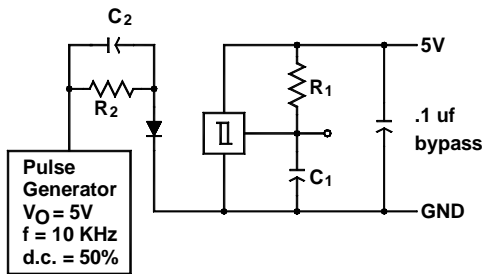


**H22LOB**  
Open-Collector Output Buffer



**H22LOI**  
Open-Collector Output Inverter

Switching Speed Test Circuit

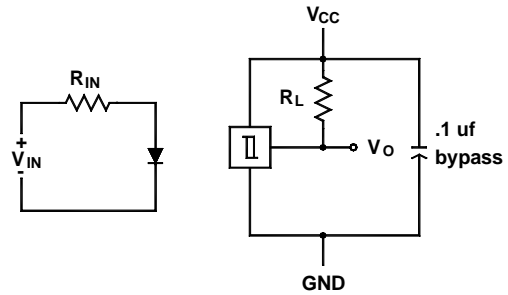


$R_1 = 180\ \Omega$   
 $R_2 = 360\ \Omega$

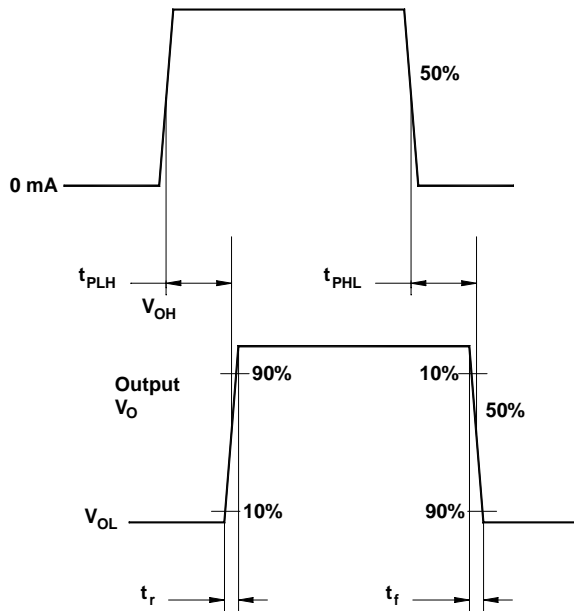
$C_1 = 15\text{ pf}$   
 $C_2 = 20\text{ pf}$

$C_1$  and  $C_2$  include probe and  
stray wire capacitance

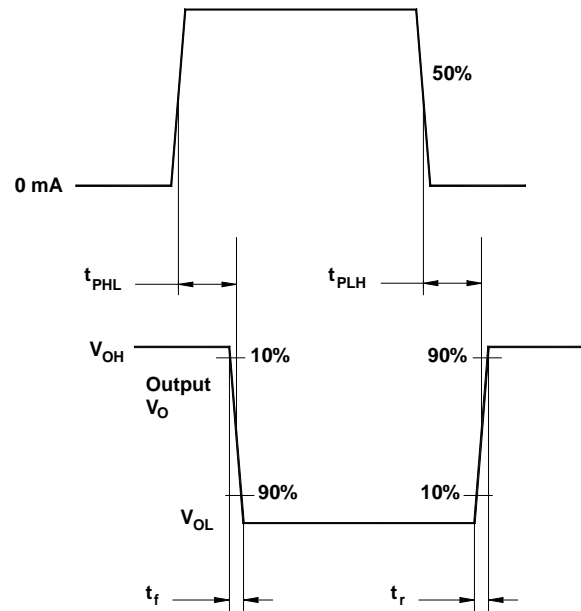
Typical Operating Circuit



Switching Test Curve for Buffers



Switching Test Curve for Inverters



## **DISCLAIMER**

FAIRCHILD SEMICONDUCTOR RESERVES THE RIGHT TO MAKE CHANGES WITHOUT FURTHER NOTICE TO ANY PRODUCTS HEREIN TO IMPROVE RELIABILITY, FUNCTION OR DESIGN. FAIRCHILD DOES NOT ASSUME ANY LIABILITY ARISING OUT OF THE APPLICATION OR USE OF ANY PRODUCT OR CIRCUIT DESCRIBED HEREIN; NEITHER DOES IT CONVEY ANY LICENSE UNDER ITS PATENT RIGHTS, NOR THE RIGHTS OF OTHERS.

## **LIFE SUPPORT POLICY**

FAIRCHILD'S PRODUCTS ARE NOT AUTHORIZED FOR USE AS CRITICAL COMPONENTS IN LIFE SUPPORT DEVICES OR SYSTEMS WITHOUT THE EXPRESS WRITTEN APPROVAL OF THE PRESIDENT OF FAIRCHILD SEMICONDUCTOR CORPORATION. As used herein:

1. Life support devices or systems are devices or systems which, (a) are intended for surgical implant into the body, or (b) support or sustain life, and (c) whose failure to perform when properly used in accordance with instructions for use provided in the labeling, can be reasonably expected to result in a significant injury of the user.
2. A critical component in any component of a life support device or system whose failure to perform can be reasonably expected to cause the failure of the life support device or system, or to affect its safety or effectiveness.



LittleDiode supplies new, hard to find or obsolete electronic components and semiconductors all over the world.

With over two million different components listed you are sure to find the part you need.

Feel free to visit us today at our online store:

[LittleDiode.com](http://LittleDiode.com)

Looking forward to providing you with the best possible service.