

# 11 dB Directional Coupler 30 - 1000 MHz

## DCG-10-4

V2.00

### Features

- Wide Frequency Range
- Constant Coupling - Within  $\pm 0.5$  dB

### C-7

### Guaranteed Specifications\* (From -55°C to +85°C)

<b>Frequency Range</b>	30-1000 MHz
<b>Coupling (Input to Output)</b>	11.0 $\pm$ 0.5 dB
<b>Coupling Flatness</b>	$\pm$ 0.5 dB Max
<b>VSWR (All Ports)</b>	1.35:1 Max
<b>Directivity (Both Directions)</b>	20 dB Min
<b>Main Line Loss (Including Theoretical 0.46 dB Power Split)</b>	1.5 dB Max

### Operating Characteristics

<b>Input Power</b>	5.0 Watts Max
<b>Environmental</b>	MIL-STD-202 screening available.

\* All specifications apply with 50 ohm source and load impedance. This product contains elements protected by United States Patent Number 3,426,298.

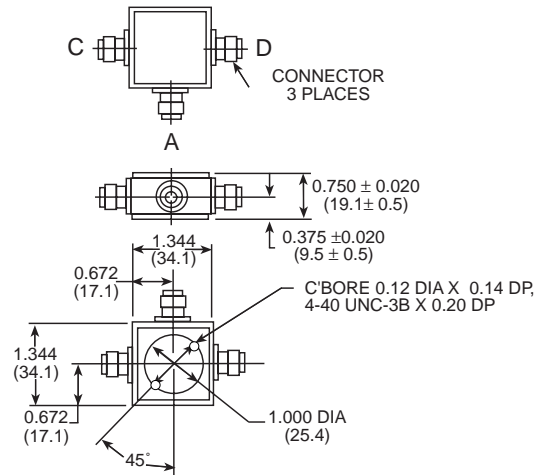
\*\* Includes theoretical power split.

### Functional Diagram



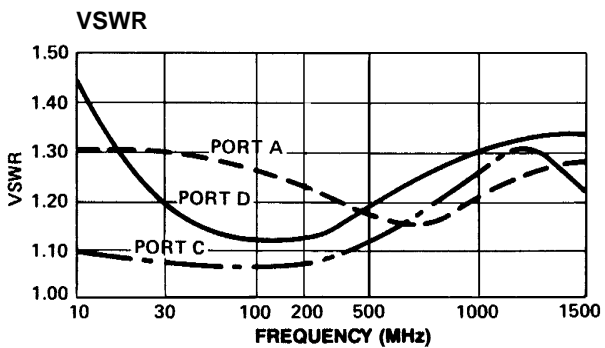
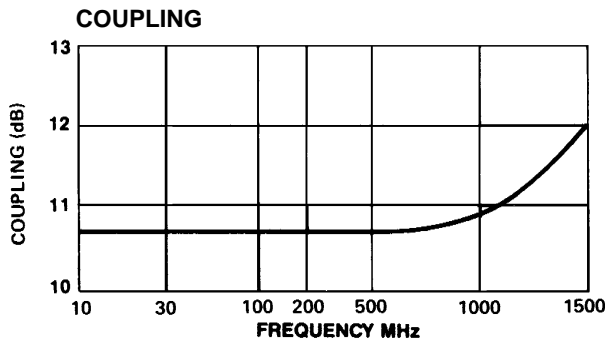
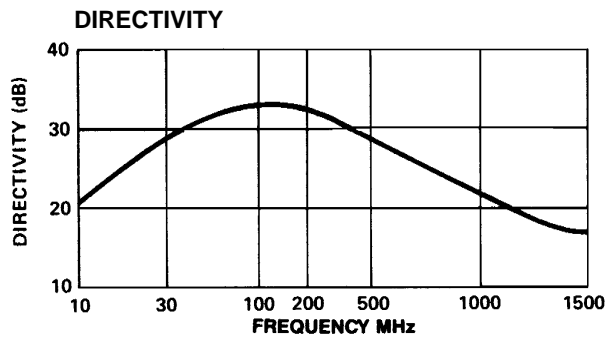
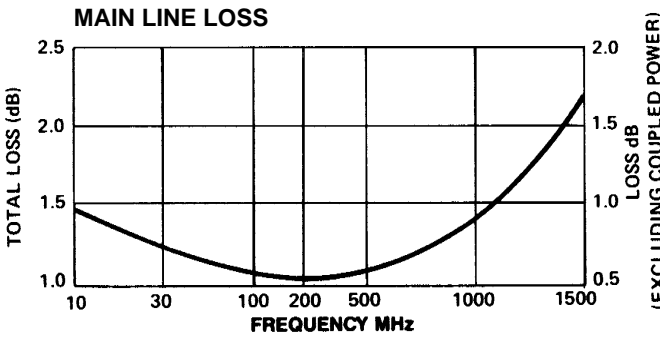
### Ordering Information

Part Number	Package
DCG-10-4 BNC	Connectorized
DCG-10-4 SMA	Connectorized
DCG-10-4 N	Connectorized
DCG-10-4 TNC	Connectorized



Dimensions in ( ) are in mm.  
Unless Otherwise Noted: .xxx =  $\pm 0.015$  (.x =  $\pm 0.4$ )  
WEIGHT (APPROX): 2.5 OUNCES 71 GRAMS

Typical Performance





LittleDiode supplies new, hard to find or obsolete electronic components and semiconductors all over the world.

With over two million different components listed you are sure to find the part you need.

Feel free to visit us today at our online store:

[LittleDiode.com](http://LittleDiode.com)

Looking forward to providing you with the best possible service.