

RECTIFIER ASSEMBLIES

Three Phase Bridges, 25 Amp,
Military Approved

JANTX 483-1
JANTX 483-2
JANTX 483-3

FEATURES

- Qualified to MIL-S-19500/483
- Current Rating: 25A
- PIV: from 200 to 600V
- Surge Ratings: 150A
- Only Fused-in-Glass Diodes Used
- Controlled Avalanche Characteristics
- Aluminum Heat Sink Case, Electrically Insulated

DESCRIPTION

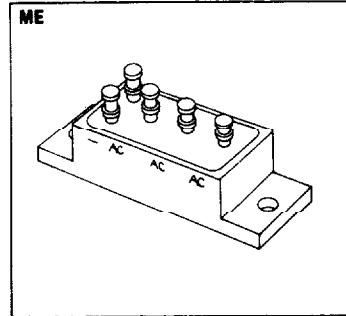
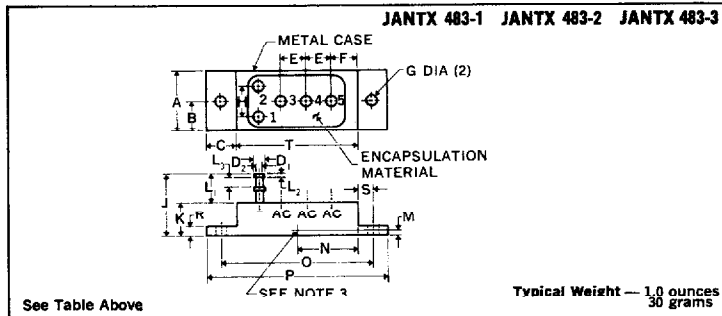
This military high-current three phase bridge series is assembled with diodes which have been subjected to TX type screening tests. This series of bridges offers the utmost in high reliability as normally required in military system design.

ABSOLUTE MAXIMUM RATINGS

Peak Inverse Voltage	200 to 600V
Maximum Average D.C. Output Current	
@ $T_C = 55^\circ\text{C}$	25A
@ $T_C = 100^\circ\text{C}$	18.5A
Non-Repetitive Sinusoidal Surge (8.3ms)	
@ $T_C = 55^\circ\text{C}$	150A
Operating and Storage Temperature Range, T_C	-65°C to $+150^\circ\text{C}$
Thermal Resistance Junction to Ambient	20°C/W
Junction to Case	2.5°C/W

LTR	DIMENSIONS			
	INCH		MILLIMETERS	
	MIN	MAX	MIN	MAX
A	.730	.770	18.54	19.56
B	.355	.395	9.02	10.03
C	.355	.395	9.02	10.03
D ₁	.141	.151	3.58	3.84
D ₂	.108	.118	2.74	3.00
E	.355	.395	9.02	10.03
F	.230	.270	5.84	6.86
G	.149	.189	3.78	4.80
H	.355	.395	9.02	10.03
J		.82		20.83
K	.39	.51	9.91	12.95
L ₁	.240	.320	6.10	8.13
L ₂	.015	.030	.38	.76
L ₃	.100	.125	2.54	3.18
M	.040	.060	1.02	1.52
N	.72	.78	18.29	19.81
O	1.84	1.90	46.74	48.26
P	2.22	2.28	56.39	57.91
R	.04	.15	2.29	3.81
S	.168	.208	4.27	5.28
T	1.47	1.53	37.34	38.86

MECHANICAL SPECIFICATIONS



NOTES:

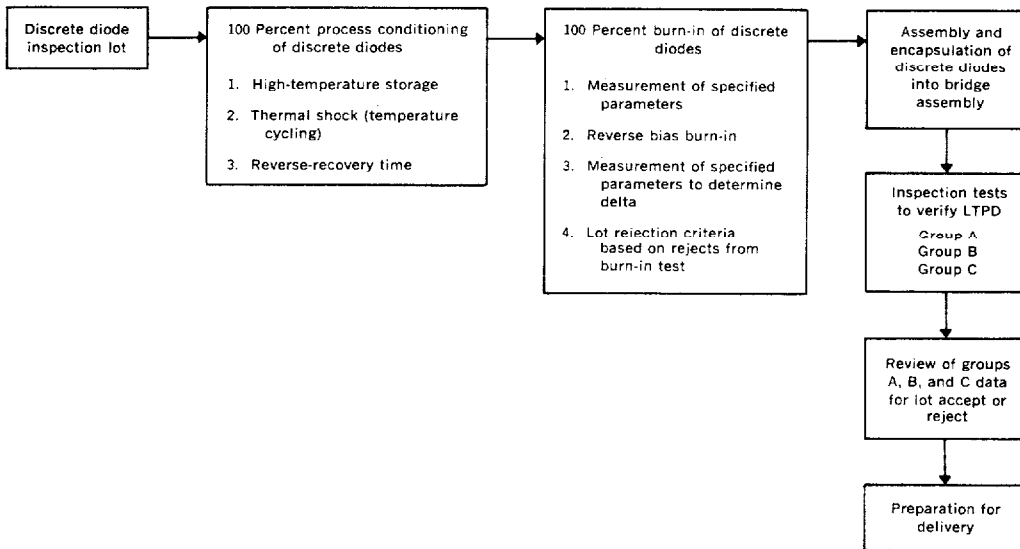
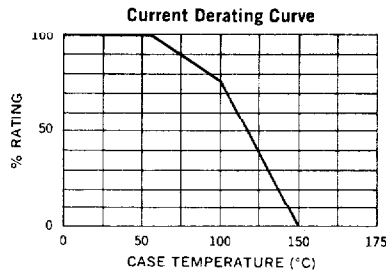
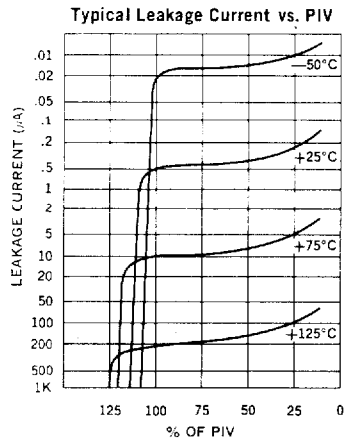
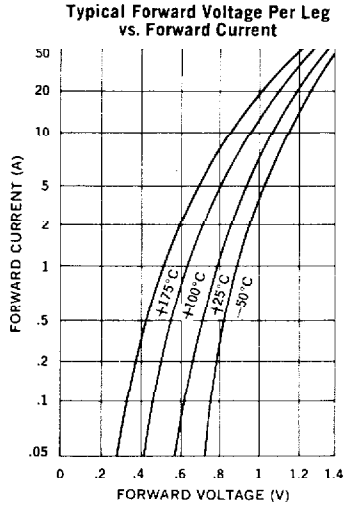
1. Terminals shall be tinned.
2. Polarity shall be marked as shown on drawing.
3. Point at which T_C is read (shall be in metal part of case).

Microsemi Corp.
Watertown
The diode experts

ELECTRICAL SPECIFICATIONS (at 25°C unless noted)

Type	PIV Per Leg Volts	Breakdown Voltage Per Leg @ 50µA Volts	Maximum Forward Voltage Drop Per Leg*	Maximum Leakage Current Per Leg @ PIV	
				T _C = 25°C	T _C = 100°C
				µA	µA
JANTX 483-1	200	240	1.3V @ 39A (pk)	2	200
JANTX 483-2	400	480			
JANTX 483-3	600	660			

* Maximum forward voltage drop is measured at a pulse width of 8.3ms, duty cycle ≤2%.





LittleDiode supplies new, hard to find or obsolete electronic components and semiconductors all over the world.

With over two million different components listed you are sure to find the part you need.

Feel free to visit us today at our online store:

LittleDiode.com

Looking forward to providing you with the best possible service.