

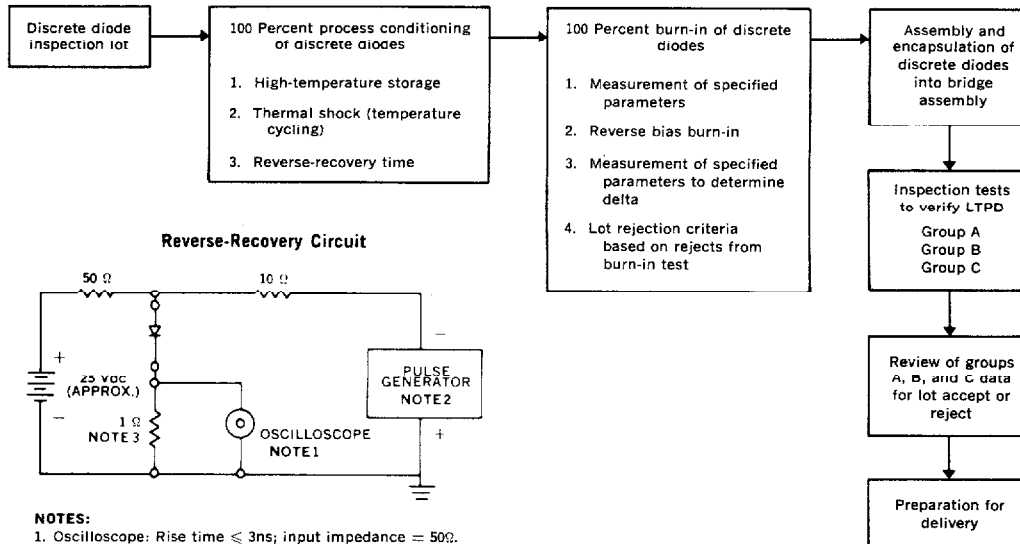
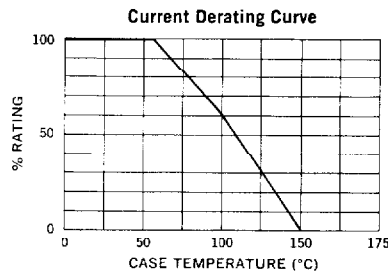
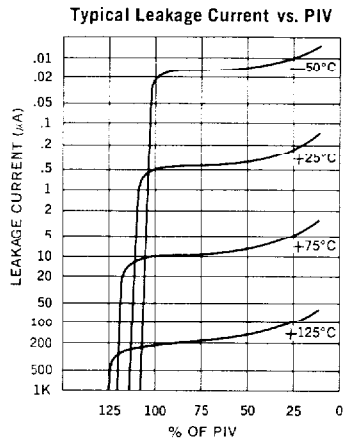
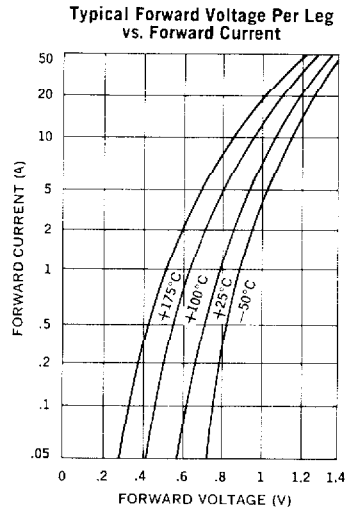
Electrical Specifications (at 25°C unless noted)

Type	PIV Per Leg	Peak Forward Voltage Drop*		Maximum Reverse Recovery Time†	Maximum Leakage Current Per Leg @ PIV	
		Minimum	Maximum		T _C = 25°C	T _C = 100°C
	Volts			μS	μA	μA
JAN SPA25 JAN SPB25 JAN SPC25 JAN SPD25	100 200 400 600	0.9V	1.4V	2	2	150
		@ 39A(pk)				

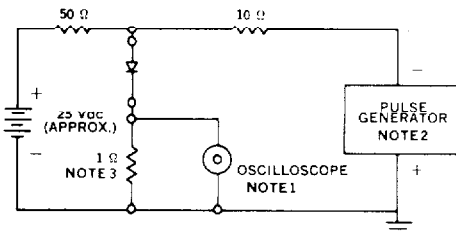
3

*Peak forward voltage drop is measured at a pulse width of 8.3ms.

†Measured in a reverse recovery circuit switching from 0.5A forward to 1.0A reverse current recovery to 0.5A.



Reverse-Recovery Circuit



- NOTES:**
- Oscilloscope: Rise time ≤ 3ns; input impedance = 50Ω.
 - Pulse Generator: Rise time ≤ 8ns; source impedance 10Ω.
 - Current viewing resistor, non-inductive, coaxial recommended.

This datasheet has been downloaded from:

www.DatasheetCatalog.com

Datasheets for electronic components.



LittleDiode supplies new, hard to find or obsolete electronic components and semiconductors all over the world.

With over two million different components listed you are sure to find the part you need.

Feel free to visit us today at our online store:

LittleDiode.com

Looking forward to providing you with the best possible service.