

# International Rectifier IRFK2D350, IRFK2F350

## Isolated Base Power HEX-pak™ Assembly - Half Bridge Configuration

- High Current Capability.
- UL recognised E78996.
- Electrically Isolated Base Plate.
- Easy Assembly into Equipment.

### Description

The HEX-pak™ utilises the well-proven HEXFET™ die, combining low on-state resistance with high transconductance. These superior technology die are assembled by state of the art techniques into the TO-240 package, featuring 2.5kV rms isolation and solid M5 screw connections. The small footprint means the package is highly suited to power applications where space is a premium. Available in two versions, IRFK.D... for fast switching and IRFK.F... for oscillation sensitive applications.

$$V_{DS} = 400V$$

$$R_{DS(on)} = 150m\Omega$$

$$I_D = 25A$$

### Absolute Maximum Rating

	Parameter	Max.	Units
$I_D @ T_C=25^\circ C$	Continuous Drain Current	25	A
$I_D @ T_C=100^\circ C$	Continuous Drain Current	16	A
$I_{DM}$	Pulse Drain Current	100	A ①
$P_D @ T_C=25^\circ C$	Maximum Power Dissipation	500	W
$V_{GS}$	Gate-to-Source Voltage	20	V
$V_{INS}$	R.M.S. Isolation Voltage, circuit to base	2.5	kV
$T_J$	Operating Junction Temperature Range	-40 to 150	°C
$T_{STG}$	Storage Temperature Range	-40 to 150	°C

### Thermal and Mechanical Specifications

	Parameter	Min.	Typ.	Max.	Units
$R_{thJC}$	Junction-to-Case	-	-	0.25	K/W ②
$R_{thCS}$	Case-to-Sink, smooth & greased surface	-	0.1	-	K/W
T	Mounting Torque +10%				③
	HEXpak to Heatsink	-	5	-	Nm
	Busbar to HEXpak	-	3	-	Nm
wt	Approximate Weight	-	140	-	g
		-	5	-	oz

#### Notes:

- ① - Repetitive Rating: Pulse width limited by maximum junction temperature see figure 8.
- ② - Per Module.
- ③ - A mounting compound is recommended and the torque should be rechecked after a period of three hours to allow for the spread of the compound.

# IRFK2D350, IRFK2F350



## Electrical Characteristics @ $T_J = 25^\circ\text{C}$ (Unless otherwise specified)

Parameter	Parameter	Min.	Typ.	Max.	Units	Test Conditions
$B_{V_{DS}}$	Drain-to-Source Breakdown voltage	400	-	-	V	$V_{GS}=0\text{V}$ , $I_D=1.0\text{mA}$
$R_{D(ON)}$	Static Drain-to-Source On-State Resistance	-	120	150	m $\Omega$	$V_{GS}=10\text{V}$ , $I_D=16\text{A}$
$I_{D(ON)}$	On-State Drain Current	25	-	-	A	$V_{DS} > I_{D(ON)} \times R_{D(ON)}$ , $V_{GS}=10\text{V}$
$V_{GS(th)}$	Gate Threshold Voltage	2.0	-	4.0	V	$V_{DS}=V_{GS}$ , $I_D=1.0\text{mA}$
$g_{fs}$	Forward Transconductance <sup>Ⓢ</sup>	16	25	-	S	$V_{DS} > 50\text{V}$ , $I_D=16\text{A}$
$I_{DSS}$	Zero Gate Voltage Drain Current	-	-	0.5	mA	$V_{DS}=V_{DSS}$ , $V_{GS}=0\text{V}$
		-	-	2.0	mA	$V_{GS}=10\text{V}$ , $T_C=125^\circ\text{C}$ , $V_{DS}=V_{DSS}$ max x 0.8
$I_{GSS}$	Gate-to-Source Leakage Forward	-	-	200	nA	$V_{GS}=20\text{V}$
$I_{GSS}$	Gate-to-Source Leakage Reverse	-	-	-200	nA	$V_{GS}=-20\text{V}$
$Q_g$	Total Gate Charge	-	200	260	nC	$I_D=25\text{A}$ , $V_{GS}=10\text{V}$ ,
$Q_{gs}$	Gate-to-Source Charge	-	26	38	nC	$V_{DS}=V_{DSS}$ max x 0.8
$Q_{gd}$	Gate-to-Drain ("Miller") Charge	-	84	128	nC	
$t_{d(ON)}$	Turn-on Delay Time	IRFK2D350	40	-	ns	$V_{DD}=180\text{V}$ , $I_D=16\text{A}$ ,
		IRFK2F350	45	-	ns	
$t_r$	Rise Time	IRFK2D350	50	-	ns	$V_{GS}=10\text{V}$ ,
		IRFK2F350	65	-	ns	
$t_{d(OFF)}$	Turn-off Delay Time	IRFK2D350	180	-	ns	$R_{SOURCE}=3.3\Omega$
		IRFK2F350	240	-	ns	
$t_f$	Fall Time	IRFK2D350	40	-	ns	
		IRFK2F350	65	-	ns	
$L_{DS}$	Drain-to-Source Inductance	-	18	-	nH	
$C_{iss}$	Input Capacitance	-	5.5	-	nF	$V_{GS}=0\text{V}$ , $V_{DS}=25\text{V}$ ,
$C_{oss}$	Output Capacitance	-	1.3	-	nF	$f=1.0\text{MHz}$
$C_{rss}$	Reverse Transfer Capacitance	-	0.35	-	nF	
	Linear Derating Factor	-	-	4	W/K	

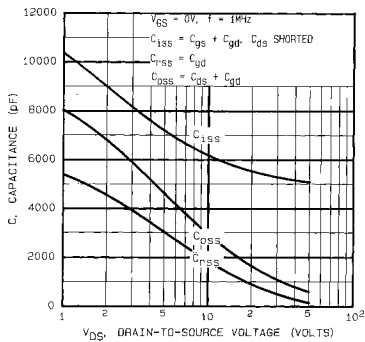
## Source-Drain Diode Ratings and Characteristics

Parameter	Parameter	Min.	Typ.	Max.	Units	Test Conditions
$I_S$	Continuous Source Current (Body Diode)	-	-	25	A	
$I_{SM}$	Pulsed Source Current (Body Diode)	-	-	95	A	
$V_{SD}$	Diode Forward Voltage	-	-	1.6	V	$V_{GS}=0\text{V}$ , $I_S=25\text{A}$ , $T_C=25^\circ\text{C}$
$t_{rr}$	Reverse Recovery Time	180	400	880	ns	$di/dt=200\text{A}/\mu\text{s}$ , $T_J=150^\circ\text{C}$
$Q_{rr}$	Reverse Recovered Charge	4.0	10.0	25.0	$\mu\text{C}$	$I_S=25\text{A}$

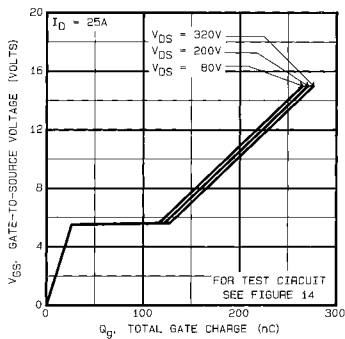
### Notes:

Ⓢ - Pulse Width  $\leq 300\mu\text{s}$ ; Duty cycle  $\leq 2\%$ .

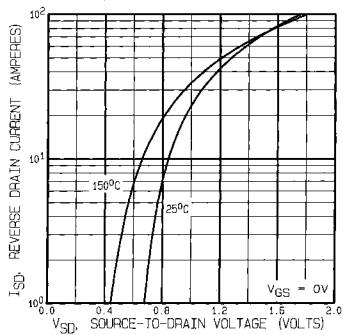
# IRFK2D350, IRFK2F350



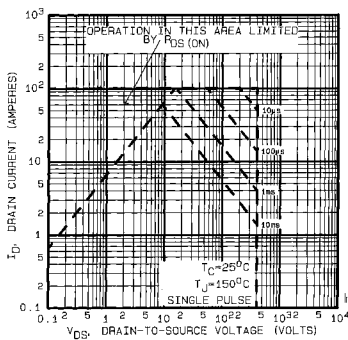
**Fig 5. Typical Capacitance Vs. Drain-to-Source Voltage**



**Fig 6. Typical Gate Charge Vs. Gate-to-Source Voltage**



**Fig 7. Typical Source-Drain Diode Forward Voltage**



**Fig 8. Maximum Safe Operating Area**



# IRFK2D350, IRFK2F350

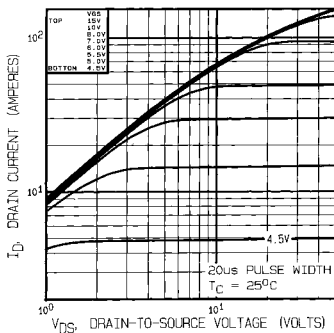


Fig 1. Typical Output Characteristics,  
 $T_C = 25^\circ\text{C}$

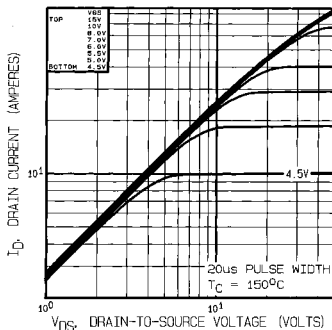


Fig 2. Typical Output Characteristics,  
 $T_C = 150^\circ\text{C}$

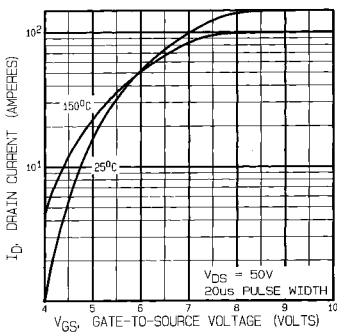


Fig 3. Typical Transfer Characteristics

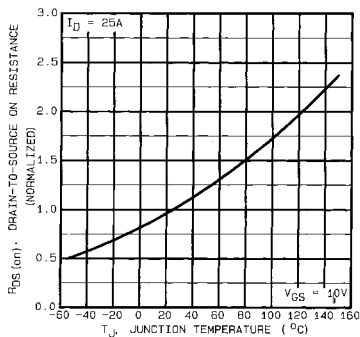


Fig 4. Normalized On-Resistance Vs.  
Temperature

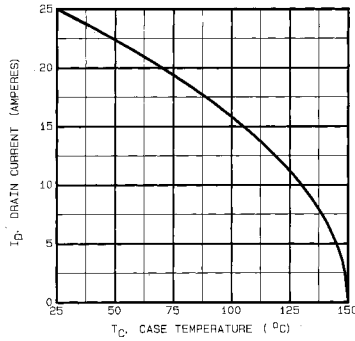


Fig 9. Maximum Drain Current Vs. Case Temperature

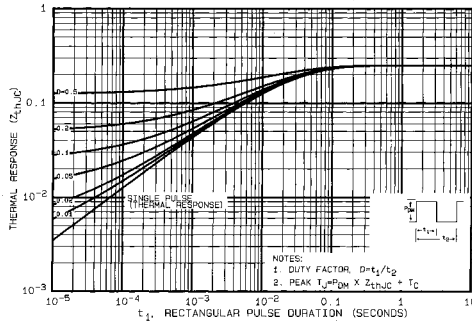


Fig 10. Maximum Effective Transient Thermal Impedance, Junction-to-Case

# IRFK2D350, IRFK2F350

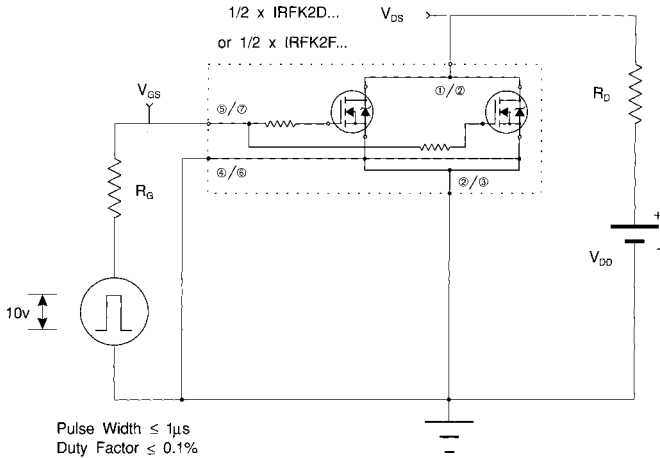


Fig 11a. Switching Time Test Circuit

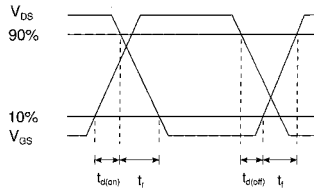
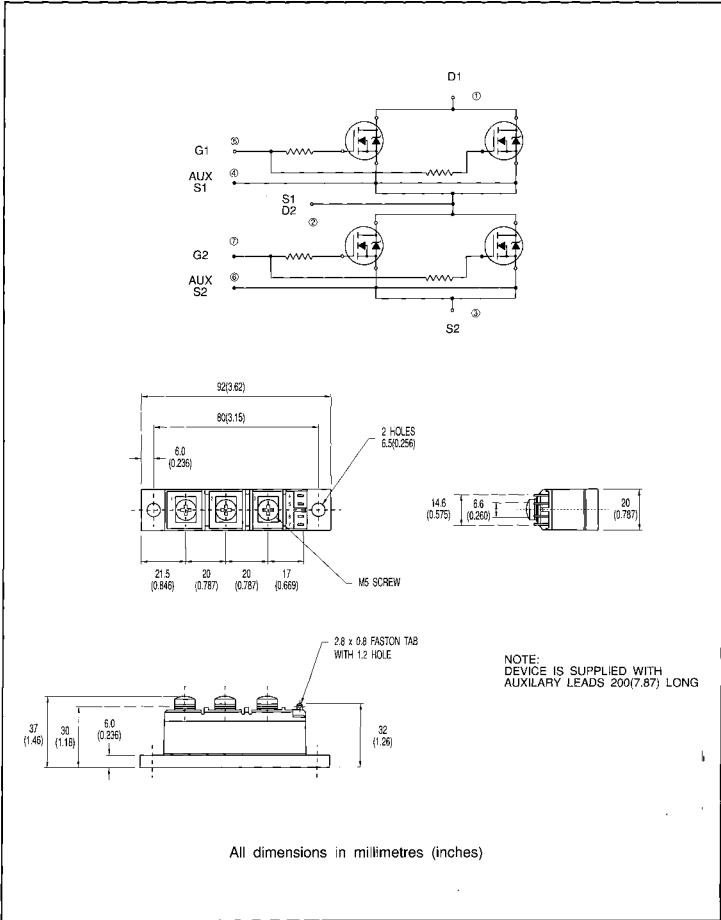


Fig 11b. Switching Time Waveforms



# IRFK2D350, IRFK2F350

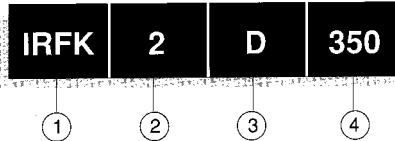
## Circuit Configuration and Outline



# IRFK2D350,IRFK2F350



## Part Numbering



1. - HEX-pak Module.
2. - Number of arms of bridge.
3. - D - Fast switching.  
- F - Oscillation resistant for sensitive applications.
4. - Voltage code:-
  - 054 - 60V
  - 150 - 100V
  - 250 - 200V
  - 350 - 400V
  - 450 - 500V
  - C50 - 600V

**WORLD HEADQUARTERS:** 233 Kansas St., EL SEGUNDO, California 90245, USA. Tel:(213) 772-2000. Tlx:664464. Fax:(213) 772-9026  
**EUROPEAN HEADQUARTERS:** Hurst Green, OXTED, Surrey RH6 9BB, UK. Tel:(0883) 713215. Tlx:95219. Fax:(0883)714234.

**CANADA:** 101 Bentley St., Markham, ONTARIO L3R 3L1. Tel:(416)475-1897. Tlx:06-966 650. Fax:(416)475 8801  
**CZECHOSLOVAKIA:** Macurova 19/1565, Box 30, 149 00 PRAGUE. Tel:(2) 792 6831. Fax:(2) 792 6831.

**DENMARK:** P.O. Box 70, Kroghoejve 51, DK-2980 BAGSVAERD. Tel: (45) 44 37 71 50. Fax (45) 44 37 71 52.

**FRANCE:** 123 Rue de Petit Vaux, 91360 EPINAY sur ORCE. Tel:(164)54.83.29. Tlx:6030943. Fax:(1)64.54.83.30.

**FINLAND:** Billakogsvägen 19, 02580 Sjurdeå St. Tel:(0) 282 8144. Fax:(0) 282 8150.

**GERMANY:** Saarburgstr. 157, D-6380 BAD HOMBURG. Tel:(61)72 37096. Tlx:410404. Fax:(61)72 37065.

**HUNGARY:** Szent Istvan Park 15, H-1137 BUDAPEST. Tel:(1) 1298 822. Fax:(1) 1298 822.

**HONG KONG:** 202 Peter Building, 60 Queens Road Central, HONG KONG. Tel:(85) 252 36355. Fax: (85) 284 52908.

**ITALY:** Via Liguria 49, 10071 Borgaro, TORINO. Tel:(01)1470 14 64. Tlx:221287. Fax:(011)470 42 90.

**NETHERLANDS:** Via Zucca 8, 20017 Rho MILANO. Tel:(02)93 50 36 50. Fax:(02)93 50 36 55.

**POLAND:** Via Arno 1, 40139 BOLOGNA. Tel:(051)49 33 07. Fax:(051)49 54 80.

**INDIA:** 31 Greenacre, 5 Union Park, Khar (W), BOMBAY 400 052. Tel:(022)635026/533779/540242. Tlx:011-71461.

**JAPAN:** K & F Bldg. 2F, 3-30-4 Nishi-Rebuku, Toshima-ku, TOKYO, Japan 171. Tel:(03)983 0641. Fax:(03)983 0642.

**SINGAPORE:** HEX 10-01 Fortune Centre, 190 Middle Road, SINGAPORE 0718. Tel:(65)6396 3922/337 4695/336 6286. Fax:(65)337 4692.

**SWEDEN:** Box: 86, S-162 12 Vallingby 1, STOCKHOLM. Tel:(06)870035. Fax:(08)874242.

**SWITZERLAND:** CH-8032 ZURICH, Kirchenweg 5. Tel:(01)386 8702/8696. Fax:(01)383 5109/2379.

**U.S.A.:**

**Central Zone:** 2401 Plum Grove Road, Suite 111, PALATINE, IL60067. Tel:(312)397-0002. Fax:(312)397-0114.

**Eastern Zone:** 71 Grand Avenue, PALISADES PARK, NJ07650. Tel:(201)943-4554. Fax:(201)943-6754.

**Southern Zone:** 800 Office Plaza Blvd., Suite 401, KISSIMMEE, FL32743. Tel:(407)933-2383. Fax:(407)933-2293.

**Western Zone:** 222 Kansas Street, EL SEGUNDO, CA90245. Tel:(213)607-8886. Fax:(213)640-6533.

Sales Offices, Agents and Distributors in Major Cities throughout the World.

In the interest of product improvement INTERNATIONAL RECTIFIER reserves the right to change specifications at any time without notice.



LittleDiode supplies new, hard to find or obsolete electronic components and semiconductors all over the world.

With over two million different components listed you are sure to find the part you need.

Feel free to visit us today at our online store:

[LittleDiode.com](http://LittleDiode.com)

Looking forward to providing you with the best possible service.