

GP2A20/GP2A22

Light Modulation, Long Focal Distance Type OPIC Photointerrupter

■ Features

1. Light modulation type, free from external disturbing light
2. Long focal distance type
Detecting range
(GP2A20: 3 to 7mm)
(GP2A22: 9 to 15mm)
3. Capable of TTL direct connection
4. With 3-pin connector provided for easier interface with peripheral control circuit

■ Applications

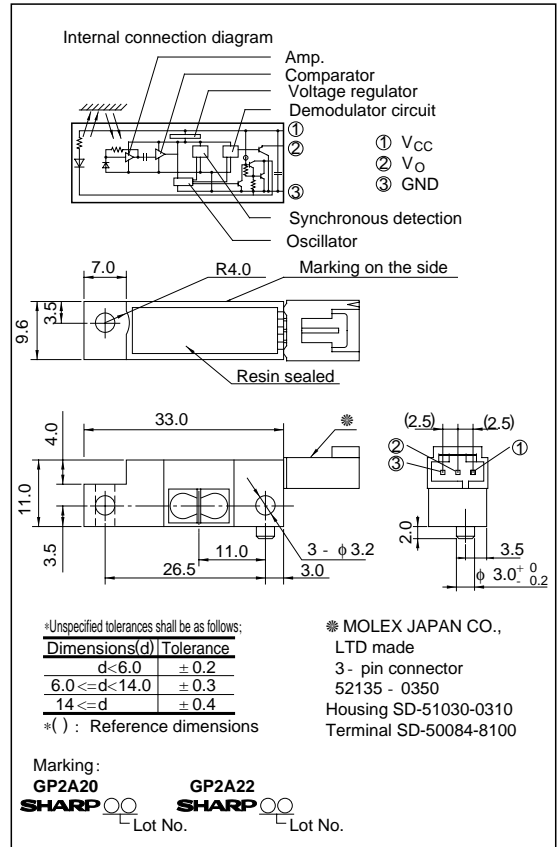
1. Copiers
2. Laser beam printers
3. Facsimiles

■ Line-ups

	Detecting range	
	3 to 7mm	9 to 15mm
Model No.	GP2A20	GP2A22

■ Outline Dimensions

(Unit : mm)



※“ OPIC ” (Optical IC) is a trademark of the SHARP Corporation.
An OPIC consists of a light-detecting element and signal-processing circuit integrated onto a single chip.

■ Absolute Maximum Ratings (T_a = 25°C)

Parameter	Symbol	Rating	Unit
Supply voltage	V _{CC}	- 0.5 to 7	V
*1 Output voltage	V _O	30	V
*2 Low level output current	I _{OL}	50	mA
*3 Operating temperature	T _{opr}	- 10 to + 60	°C
*3 Storage temperature	T _{stg}	- 20 to + 80	°C

*1 Collector-emitter voltage of output transistor

*2 Collector current of output transistor

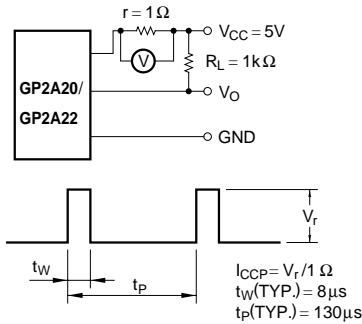
*3 The connector should be plugged in/out at normal temperature.

■ Electro - optical Characteristics

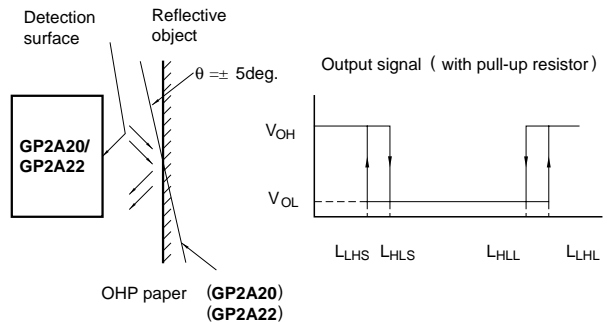
($V_{CC}= 5V, T_a= 25^{\circ}C$)

Parameter		Symbol	Conditions	MIN.	TYP.	MAX.	Unit	
Operating supply voltage		V_{CC}		4.75	-	5.25	V	
Dissipation current	Peak pulse value	I_{cp}	*4 $r= 1\Omega$	-	-	150	mA	
	Smoothing value	I_{CC}	$R_L=\infty$	-	-	30	mA	
Low level output voltage		V_{OL}	$I_{OL}= 16mA$ at detecting time	-	-	0.4	V	
High level output voltage		V_{OH}	$R_L= 1k\Omega$ at non-detecting time	4.5	-	-	V	
Non-detecting distance	GP2A20	L_{LHL}	*5 Reflective object: Kodak 90% reflective paper	-	-	20	mm	
	GP2A22			-	-	50		
Minimum detecting distance	GP2A20	L_{HLS}	*5 Reflective object: Chloroprene rubber	-	-	25	mm	
	GP2A20			*5 Reflective object: Artwork tape	-	-		3.0
	GP2A22				*5 Reflective object: Kodak 90% reflective paper	-		-
	GP2A22			*5 Reflective object: Black paper		-		-
	GP2A20				*5 Reflective object: OHP paper, $\theta = 5deg.$ (X,Y direction)	-		-
	GP2A22			-		-		3.0
Maximum detecting distance	GP2A20	L_{HLL}	*5 Reflective object: OHP paper, $\theta = 5deg.$ (X,Y direction)	-	-	9.0	mm	
	GP2A20			*5 Reflective object: Artwork tape	7.0	-		-
	GP2A22				*5 Reflective object: Kodak 90% reflective paper	9.0		-
	GP2A22			*5 Reflective object: Black paper		17.0		-
	GP2A20				*5 Reflective object: OHP paper, $\theta = 5deg.$ (X,Y direction)	15.0		-
	GP2A22			-		-		7.0
Response time	"High→Low" propagation delay time	t_{PHL}	*6	-	-	1	ms	
	"Low→High" propagation delay time	t_{PLH}		-	-	1	ms	

*4 Test Condition for Dissipation Current (Peak Pulse Value)



*5 Test Condition for Detecting Distance Characteristics



*6 Test Condition for Response Time

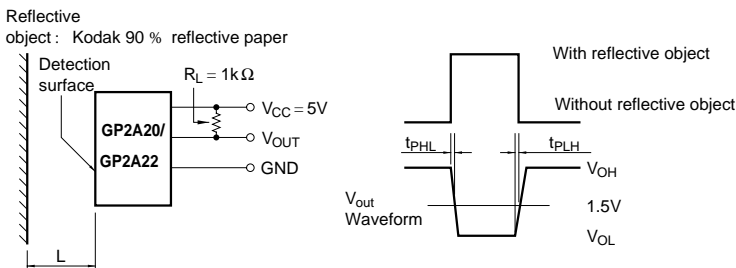


Fig. 1 Low Level Output Current vs. Ambient Temperature

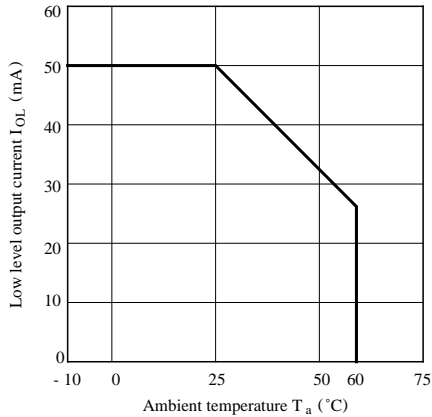


Fig. 2 Low Level Output Voltage vs. Ambient Temperature

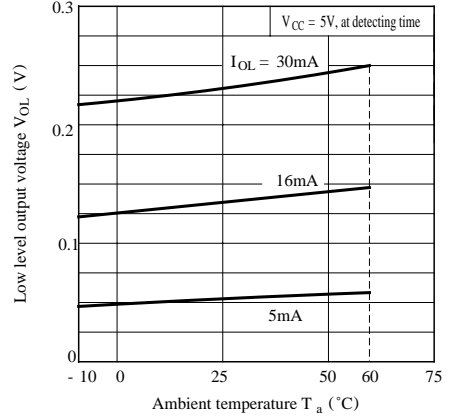


Fig. 3 Low Level Output Voltage vs. Low Level Output Current

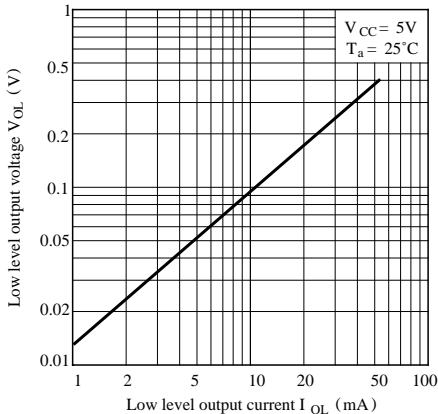
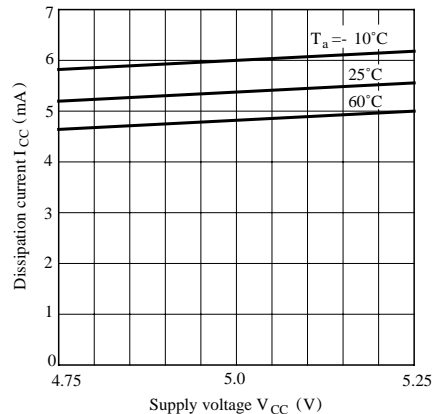


Fig. 4 Dissipation Current (Smoothing Value) vs. Supply Voltage



■ Precautions for Use

- (1) In order to stabilize power supply line, connect a by-pass capacitor of more than $0.33\mu\text{F}$ between V_{CC} and GND near
- (2) Please do not perform dip cleaning or ultrasonic cleaning because lens part of this product is an optical device of acrylic resin.
- (3) Remove dust or stains, using an air blower or a soft cloth moistened in cleaning solvent. However, do not perform the above cleaning using a soft cloth with cleaning solvent in the marking portion.

In this case, use only the following type of cleaning solvent used for wiping off:

Ethyl alcohol, Methyl alcohol, Isopropyl alcohol

When the cleaning solvents except for specified materials are used, please consult us.

- (4) As for other general cautions, refer to the chapter "Precautions for Use".



LittleDiode supplies new, hard to find or obsolete electronic components and semiconductors all over the world.

With over two million different components listed you are sure to find the part you need.

Feel free to visit us today at our online store:

LittleDiode.com

Looking forward to providing you with the best possible service.