

GP1S30

Subminiature Photointerrupter

■ Features

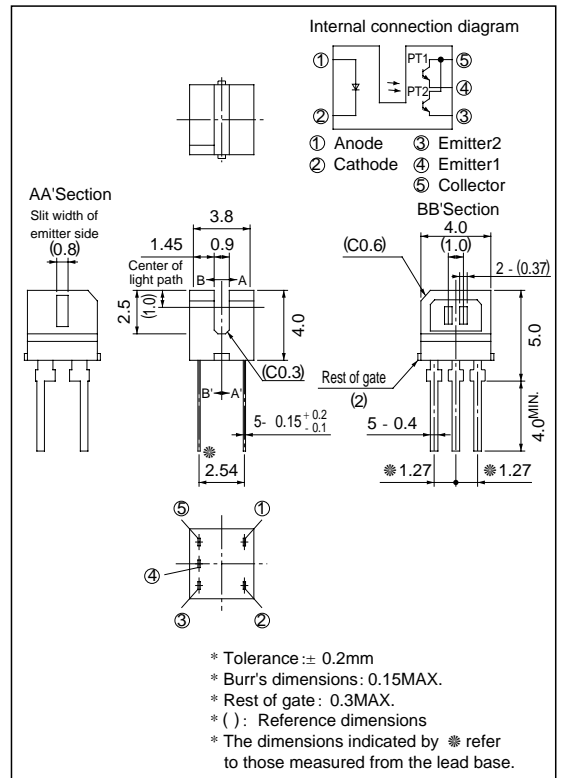
1. Compact package
2. PWB mousing type
3. Double-phase phototransistor output type for detecting of rotation direction and count
4. Detecting pitch: 0.6mm

■ Applications

1. Mouses
2. Cameras

■ Outline Dimensions

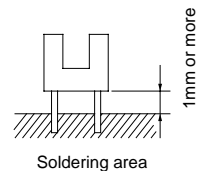
(Unit : mm)



■ Absolute Maximum Ratings

(Ta = 25°C)

	Parameter	Symbol	Rating	Unit
Input	Forward current	I _F	50	mA
	Reverse voltage	V _R	6	V
	Power dissipation	P	75	mW
Output	Collector-emitter voltage	V _{CE1O}	35	V
		V _{CE2O}		
	Emitter-collector Voltage	V _{E1CO}	6	V
		V _{E2CO}		
	Collector current	I _C	20	mA
Collector power dissipation	P _C	75	mW	
Total power dissipation	P _{tot}	100	mW	
Operating temperature	T _{opr}	- 25 to + 85	°C	
Storage temperature	T _{stg}	- 40 to + 100	°C	
*1 Soldering temperature	T _{sol}	260	°C	



*1 For MAX. 5 seconds

■ Electro-optical Characteristics

($T_a = 25^\circ\text{C}$)

Parameter		Symbol	Conditions	MIN.	TYP.	MAX.	Unit	
Input	Forward voltage	V_F	$I_F = 20\text{mA}$	-	1.2	1.4	V	
	Reverse current	I_R	$V_R = 3\text{V}$	-	-	10	μA	
Output	Collector dark current	I_{CEO}	$V_{CE} = 20\text{V}$	-	-	100	nA	
Transfer characteristics	Collector current	I_C	$V_{CE} = 5\text{V}, I_F = 4\text{mA}$	250	-	1 000	μA	
	Collector-emitter saturation voltage	$V_{CE(\text{sat})}$	$I_F = 8\text{mA}, I_C = 125\mu\text{A}$	-	-	0.4	V	
	Response time	Rise time	t_r	$V_{CC} = 5\text{V}, I_C = 100\mu\text{A}$	-	50	150	μs
		Fall time	t_f	$R_L = 1\,000\ \Omega$	-	50	150	μs

Fig. 1 Forward Current vs. Ambient Temperature

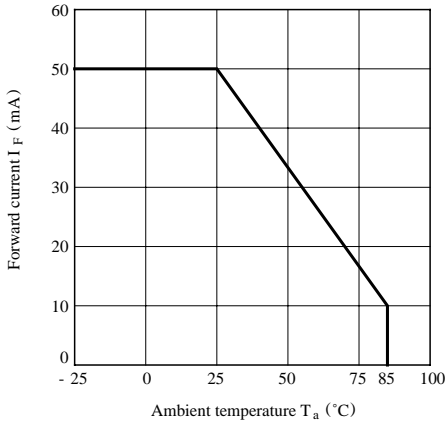


Fig. 2 Power Dissipation vs. Ambient Temperature

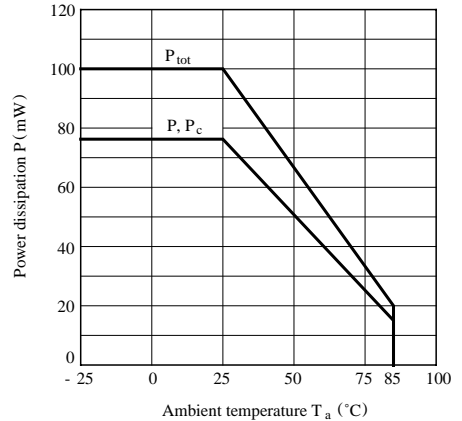


Fig. 3 Forward Current vs. Forward Voltage

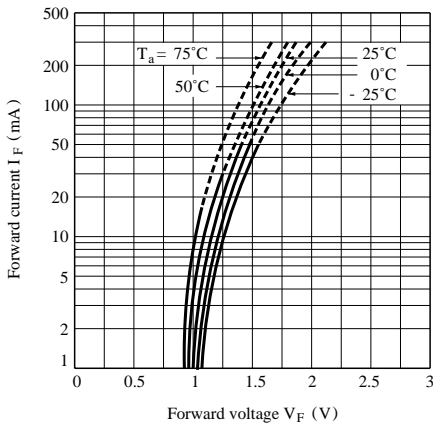


Fig. 4 Collector Current vs. Forward Current

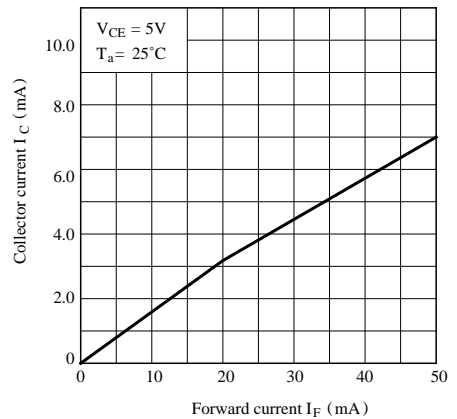


Fig. 5 Collector Current vs. Collector-emitter Voltage

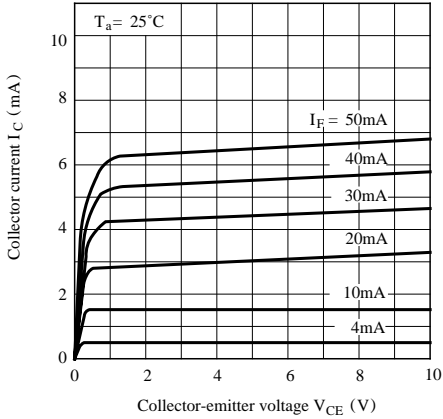


Fig. 6 Collector Current vs. Ambient Temperature

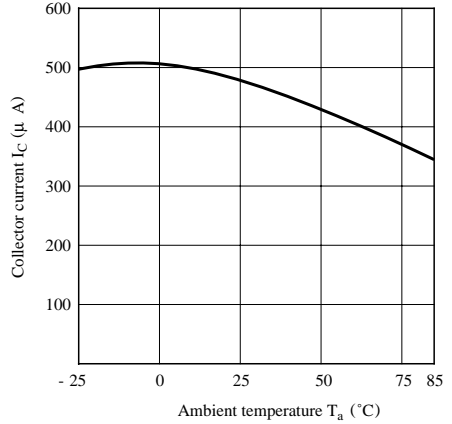


Fig. 7 Collector-emitter Saturation Voltage vs. Ambient Temperature

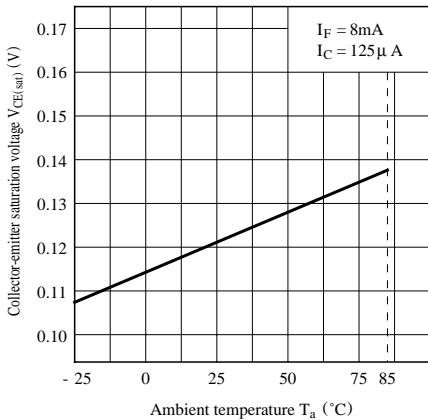


Fig. 8 Collector Dark Current vs. Ambient Temperature

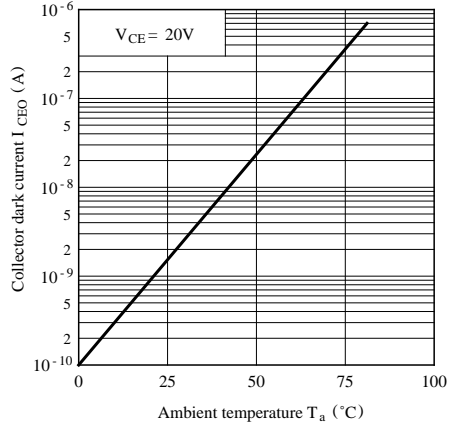
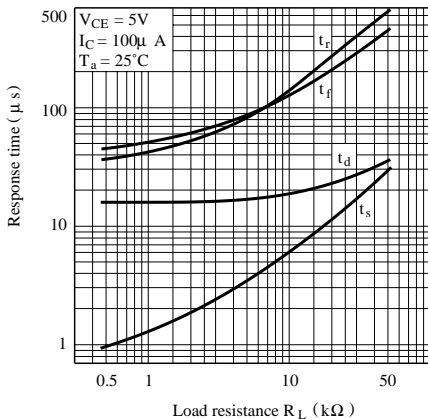


Fig. 9 Response Time vs. Load Resistance



Test Circuit for Response Time

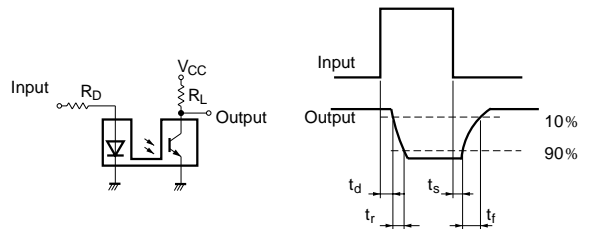


Fig.10 Relative Collector Current vs. Shield Distance (1)

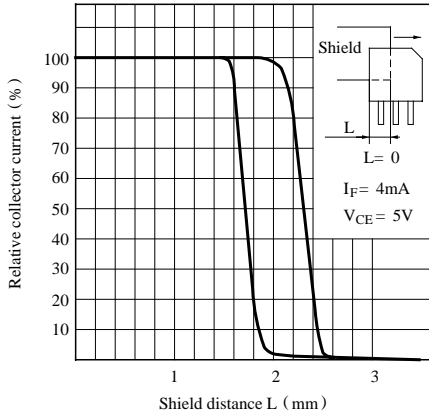
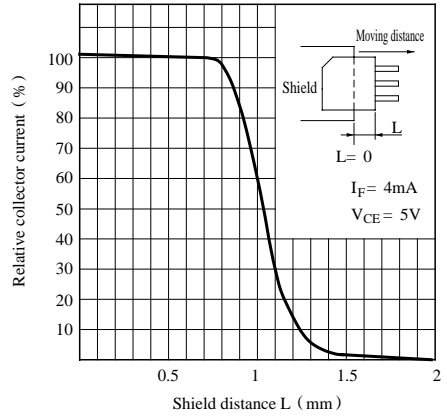


Fig.11 Relative Collector Current vs. Shield Distance (2)



- Please refer to the chapter “Precautions for Use”.



LittleDiode supplies new, hard to find or obsolete electronic components and semiconductors all over the world.

With over two million different components listed you are sure to find the part you need.

Feel free to visit us today at our online store:

LittleDiode.com

Looking forward to providing you with the best possible service.