

GP1A44E1

Transmissive Type Photointerrupter with Actuator

■ Features

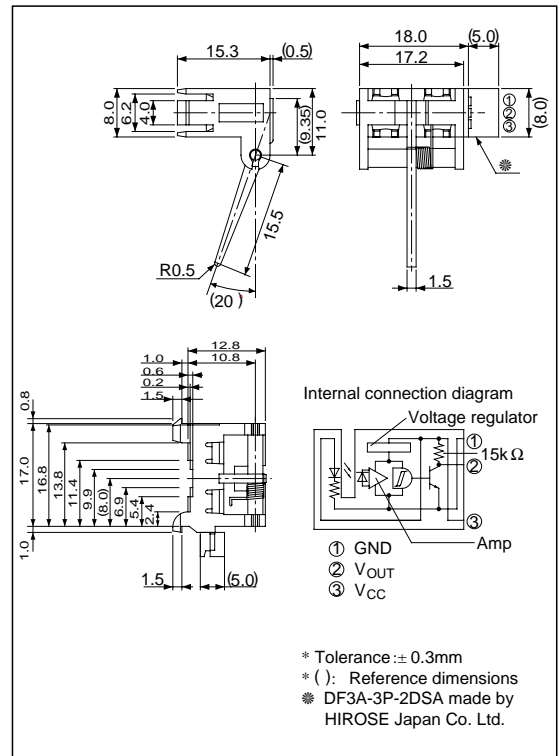
1. With compact actuator
2. Easy wiring due to built-in connector
3. Snap-in mounting type in order to mount to an equipment easily
4. OPIC output type for direct connection to microcomputer

■ Applications

1. Copiers
2. Laser beam printers
3. Facsimiles

■ Outline Dimensions

(Unit : mm)



** OPIC™ (Optical IC) is a trademark of the SHARP Corporation.
 An OPIC consists of a light-detecting element and signal-processing circuit integrated onto a single chip.

■ Absolute Maximum Ratings

(Ta = 25°C)

Parameter	Symbol	Rating	Unit
Supply voltage	V _{CC}	- 0.5 to + 10	V
*1 Output current	I _{OL}	50	mA
*2 Operating temperature	T _{opr}	- 20 to + 75	°C
*2 Storage temperature	T _{stg}	- 40 to + 85	°C

*1 Collector current of output transistor

*2 The connector should be plugged in/out at normal temperature.

■ Electro-optical Characteristics

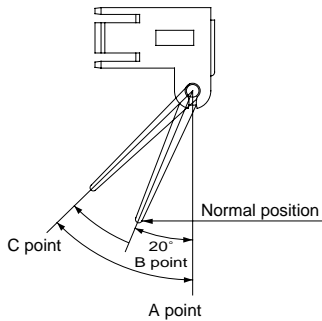
(Unless otherwise specified, $V_{CC}= 5V$, $T_a= 25^{\circ}C$)

Parameter	Symbol	Conditions	MIN.	TYP.	MAX.	Unit
Low level dissipation current	I_{CCL}	Light beam interrupted	-	-	20	mA
Low level output voltage	V_{OL}	Light beam interrupted $I_{OL} = 16mA$	-	-	0.4	V
High level dissipation current	I_{CCH}	Light beam uninterrupted	-	-	20	mA
High level output voltage	V_{OH}	Light beam uninterrupted	$V_{CC} \times 0.9$	-	-	V
Operating supply voltage	V_{CC}	$T_a = -20$ to $+75^{\circ}C$	4.5	-	5.5	V

* Condition of light beam interrupted : Lever is normal condition on the Fig.1.

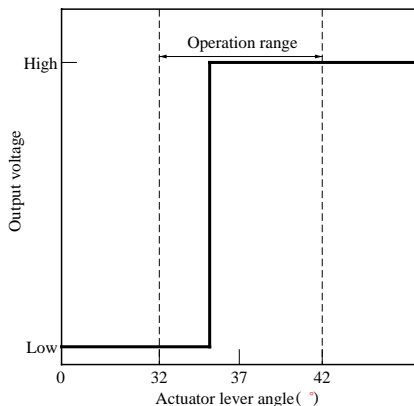
Condition of light beam uninterrupted : Lever is 30° or more movement condition from A point to B point on Fig.1.

Fig. 1 Detecting Position



Output voltage between A point and C point shall be from low level to high level when the actuator lever rotated ($37^{\circ} \pm 5^{\circ}$) from normal condition B point to C point in Fig.1. Normal condition B point shall be opaque condition.

Fig. 2 Output Voltage vs. Actuator Lever Angle



■ Mechanical Characteristics

Lever starting torque: $1 \times 10^{-4} N \cdot m$ or loss

■ Lever Life

100 000 times or more

(Lever reciprocating operation between normal condition B point and C point at the condition of no load.)

Fig. 3 Low Level Output Current vs. Ambient Temperature

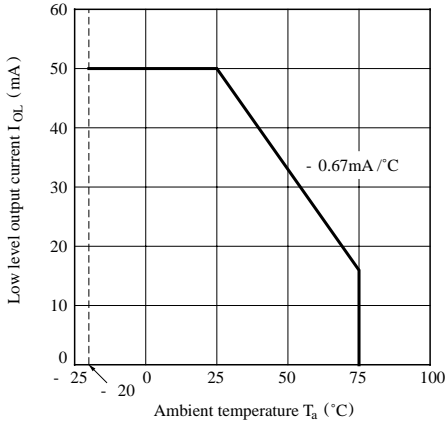


Fig. 4 Low Level Output Voltage vs. Low Level Output Current

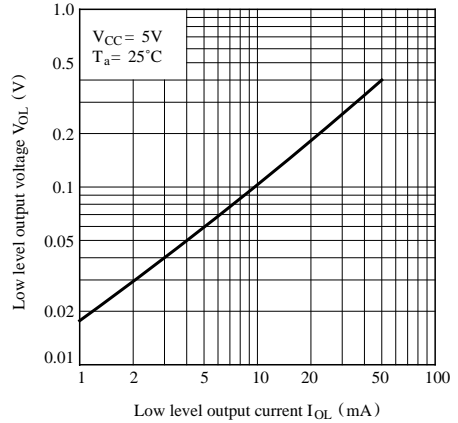


Fig. 5 Low Level Output Voltage vs. Ambient Temperature

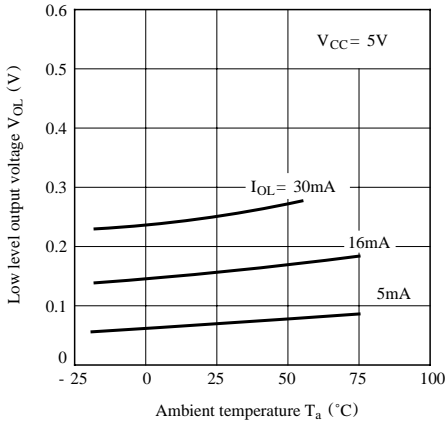
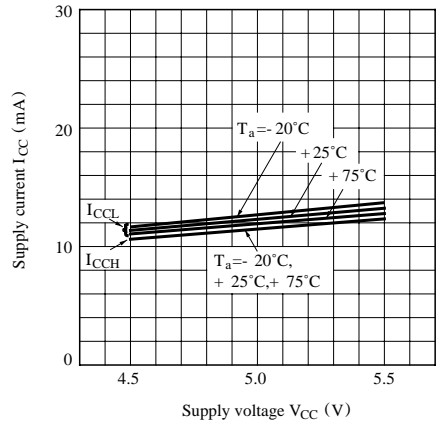


Fig. 6 Supply Current vs. Supply Voltage



- Please refer to the chapter “Precautions for Use” (Page 78 to 93).



LittleDiode supplies new, hard to find or obsolete electronic components and semiconductors all over the world.

With over two million different components listed you are sure to find the part you need.

Feel free to visit us today at our online store:

LittleDiode.com

Looking forward to providing you with the best possible service.