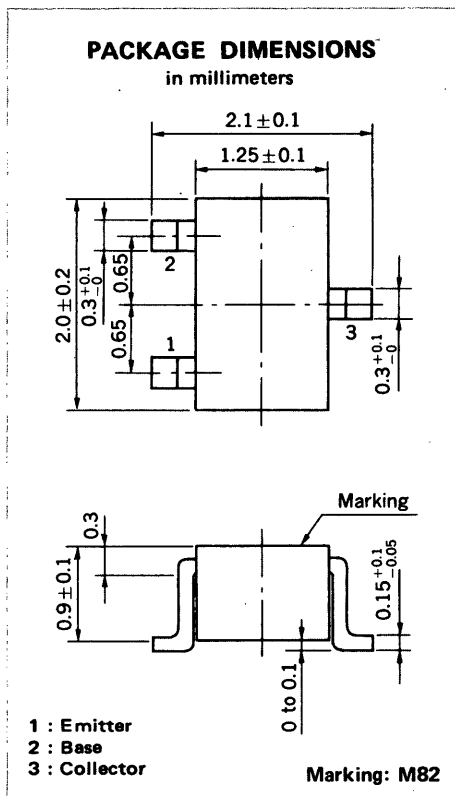
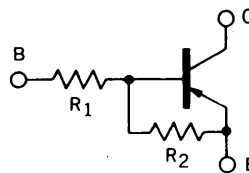


**MEDIUM SPEED SWITCHING**  
**RESISTOR BUILT-IN TYPE PNP TRANSISTOR**



**FEATURES**

- Resistors Built-in TYPE



$R_1 = 4.7 \text{ k}\Omega$   
 $R_2 = 10 \text{ k}\Omega$

- Complementary to GA1L3N

**ABSOLUTE MAXIMUM RATINGS**

Maximum Voltages and Currents ( $T_a = 25^\circ\text{C}$ )

Collector to Base Voltage	$V_{CB0}$	-60	V
Collector to Emitter Voltage	$V_{CEO}$	-50	V
Emitter to Base Voltage	$V_{EBO}$	-5	V
Collector Current (DC)	$I_C$	-100	mA
Collector Current (Pulse)	$I_C$	-200	mA

Maximum Power Dissipation

Total Power Dissipation at $25^\circ\text{C}$ Ambient Temperature	$P_T$	150	mW
--	-------	-----	----

Maximum Temperatures

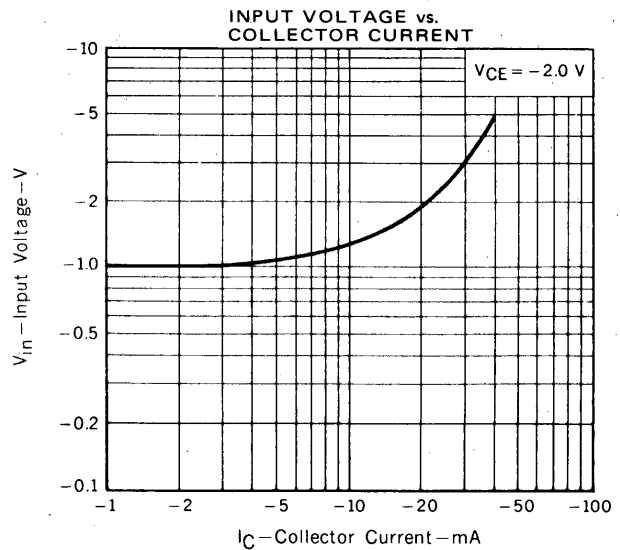
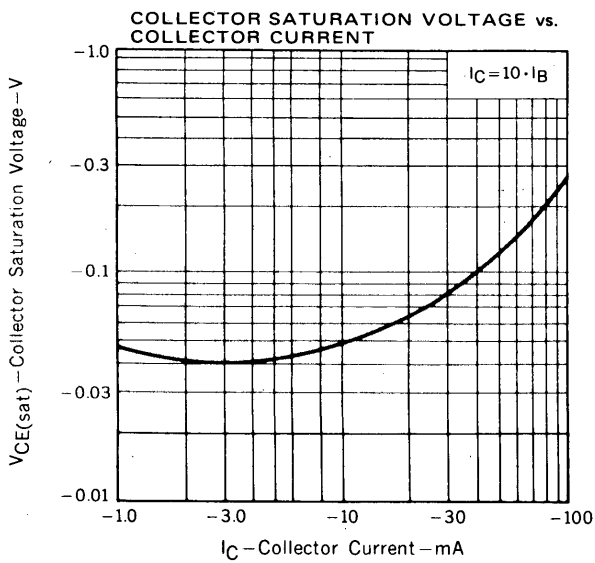
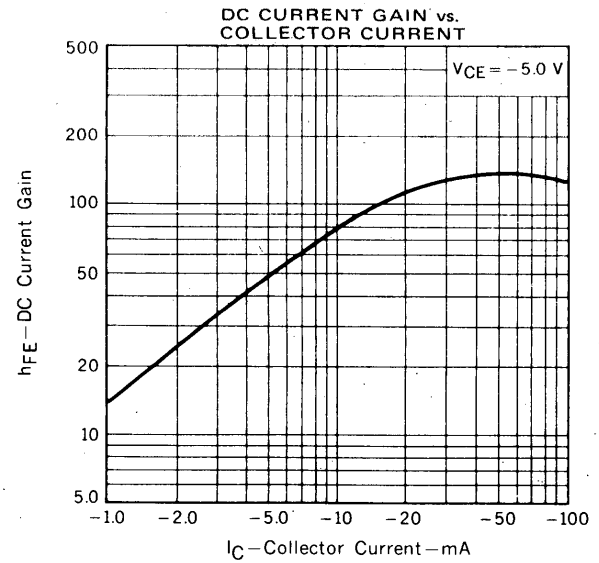
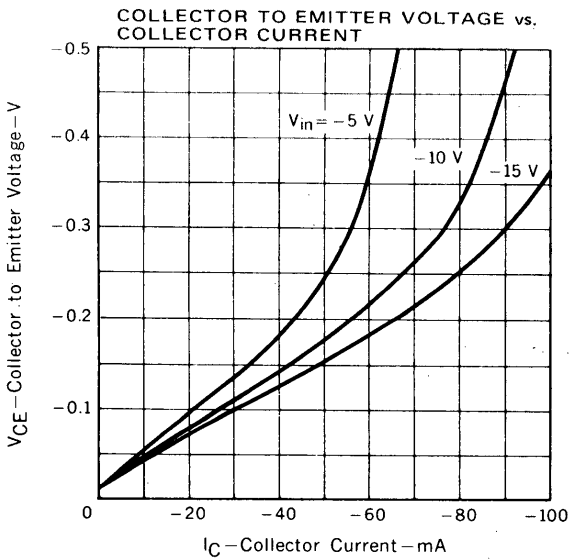
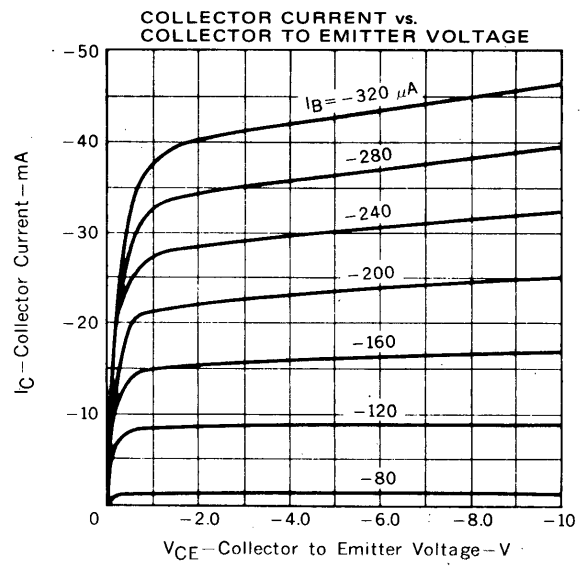
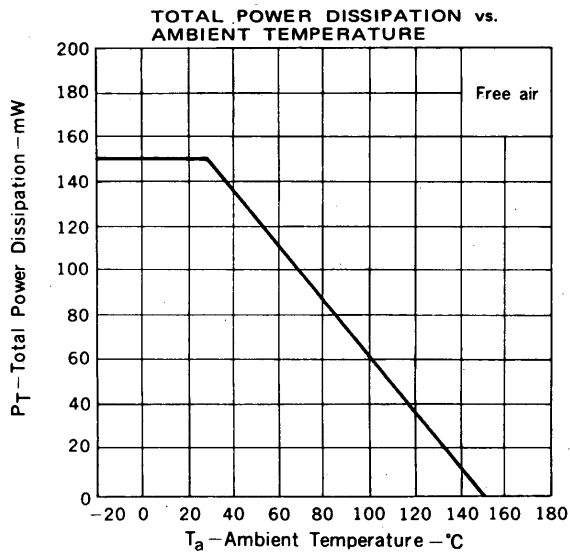
Junction Temperature	$T_j$	150	$^\circ\text{C}$
Storage Temperature Range	$T_{stg}$	-55 to +150	$^\circ\text{C}$

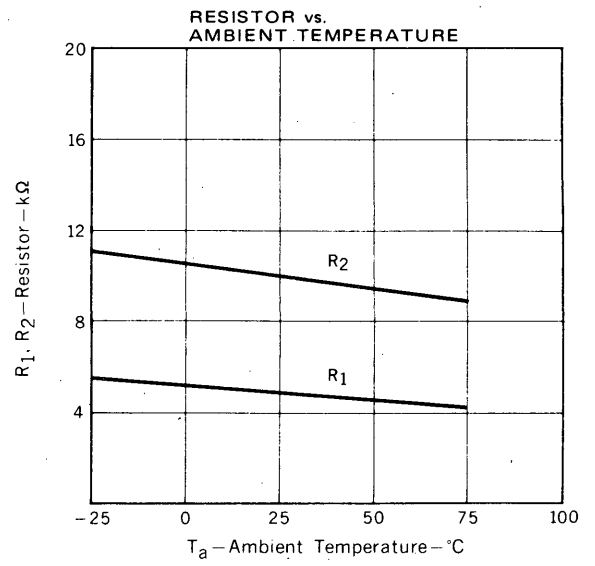
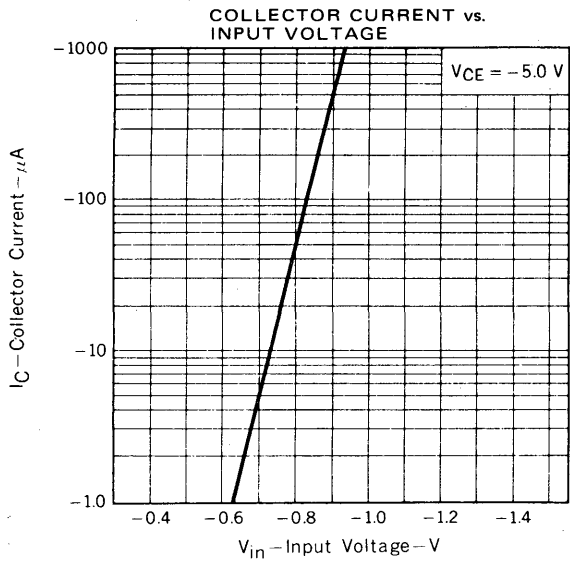
**ELECTRICAL CHARACTERISTICS ( $T_a = 25^\circ\text{C}$ )**

CHARACTERISTIC	SYMBOL	MIN.	TYP.	MAX.	UNIT	TEST CONDITIONS
Collector Cutoff Current	$I_{CBO}$			-100	nA	$V_{CB} = -50 \text{ V}, I_E = 0$
DC Current Gain	$h_{FE1}^*$	35	60	100		$V_{CE} = -5.0 \text{ V}, I_C = -5.0 \text{ mA}$
DC Current Gain	$h_{FE2}^*$	80	200			$V_{CE} = -5.0 \text{ V}, I_C = -50 \text{ mA}$
Collector Saturation Voltage	$V_{CE(sat)}^*$		-0.04	-0.2	V	$I_C = -5.0 \text{ mA}, I_B = -0.25 \text{ mA}$
Low-Level Input Voltage	$V_{IL}^*$		-0.9	-0.6	V	$V_{CE} = -5.0 \text{ V}, I_C = -100 \mu\text{A}$
High-Level Input Voltage	$V_{IH}^*$	-3.0	-1.5		V	$V_{CE} = -0.2 \text{ V}, I_C = -5.0 \text{ mA}$
Input Resistor	$R_1$	3.29	4.70	6.11	$\text{k}\Omega$	
E-B Resistor	$R_2$	7	10	13	$\text{k}\Omega$	
Turn-on Time	$t_{on}$			0.2	$\mu\text{s}$	$V_{CC} = -5 \text{ V}, V_{in} = -5 \text{ V}$ $R_L = 1 \text{ k}\Omega$ $PW = 2 \mu\text{s}, \text{Duty Cycle} \leq 2\%$
Storage Time	$t_{stg}$			5.0	$\mu\text{s}$	
Turn-off Time	$t_{off}$			6.0	$\mu\text{s}$	

\* Pulsed:  $PW \leq 350 \mu\text{s}, \text{Duty Cycle} \leq 2\%$

TYPICAL CHARACTERISTICS ( $T_a = 25^\circ\text{C}$ )









LittleDiode supplies new, hard to find or obsolete electronic components and semiconductors all over the world.

With over two million different components listed you are sure to find the part you need.

Feel free to visit us today at our online store:

[LittleDiode.com](http://LittleDiode.com)

Looking forward to providing you with the best possible service.