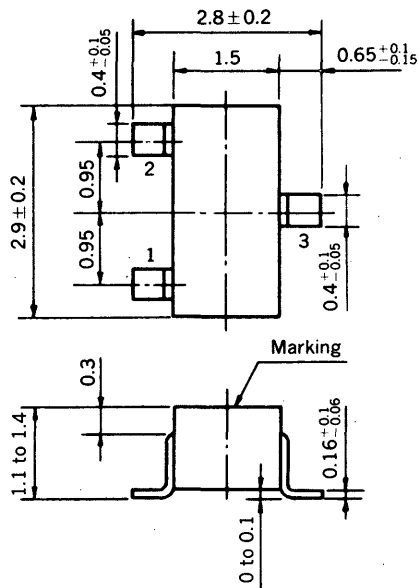


**MEDIUM SPEED SWITCHING  
RESISTOR BUILT-IN TYPE NPN TRANSISTOR  
MINI MOLD**

**PACKAGE DIMENSIONS**

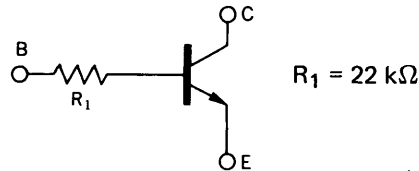
in millimeters



- 1. Emitter
- 2. Base
- 3. Collector

**FEATURES**

- Resistor Built-in TYPE



- Complementary to FN1F4Z

**ABSOLUTE MAXIMUM RATINGS**

Maximum Voltages and Currents ( $T_a = 25^\circ\text{C}$ )

Collector to Base Voltage	$V_{CB0}$	60	V
Collector to Emitter Voltage	$V_{CEO}$	50	V
Emitter to Base Voltage	$V_{EBO}$	5	V
Collector Current (DC)	$I_C$	100	mA
Collector Current (Pulse)	$I_C$	200	mA

Maximum Power Dissipation

Total Power Dissipation at $25^\circ\text{C}$ Ambient Temperature	$P_T$	200	mW
--	-------	-----	----

Maximum Temperatures

Junction Temperature	$T_j$	150	$^\circ\text{C}$
Storage Temperature Range	$T_{stg}$	-55 to +150	$^\circ\text{C}$

**ELECTRICAL CHARACTERISTICS ( $T_a = 25^\circ\text{C}$ )**

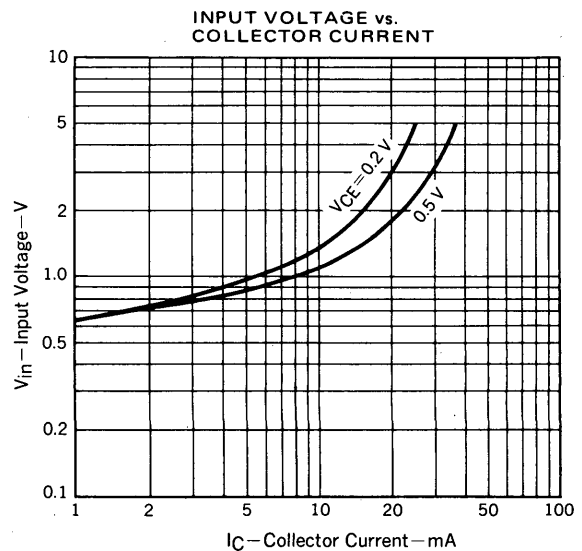
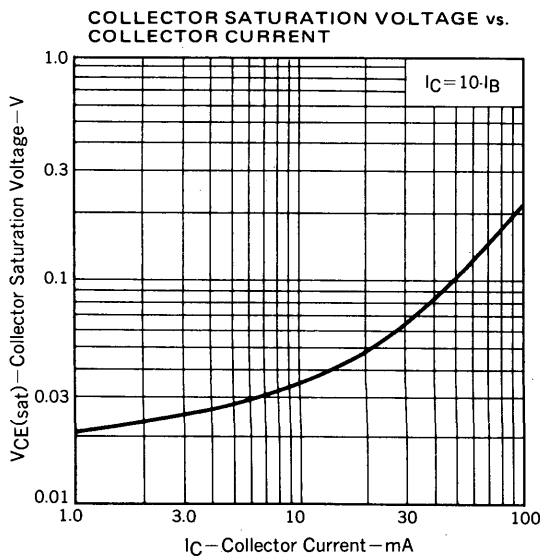
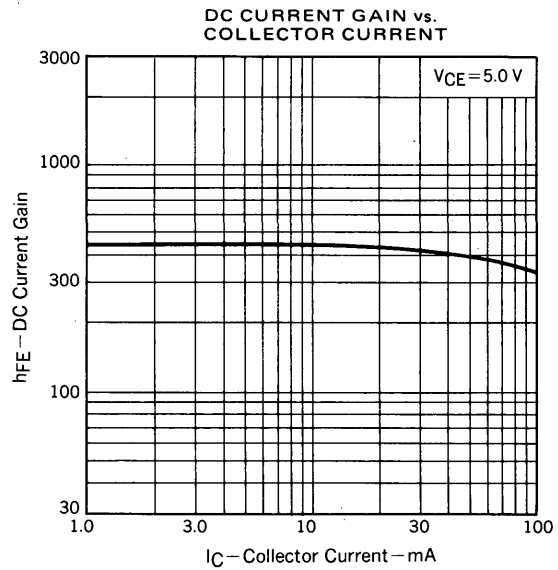
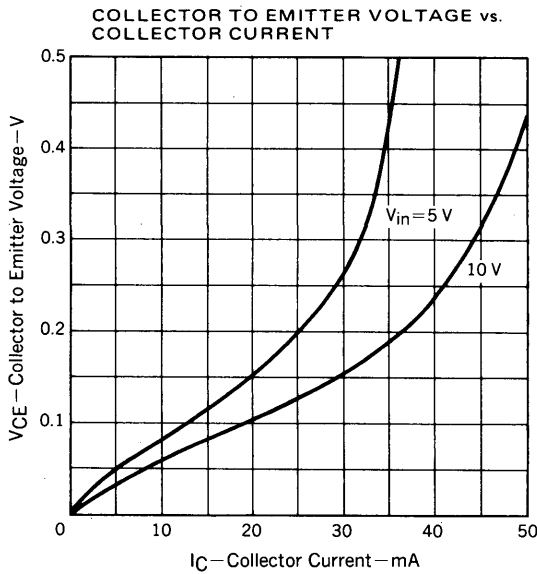
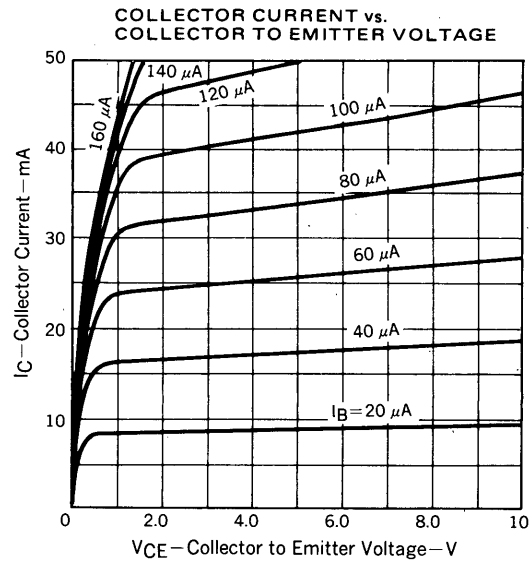
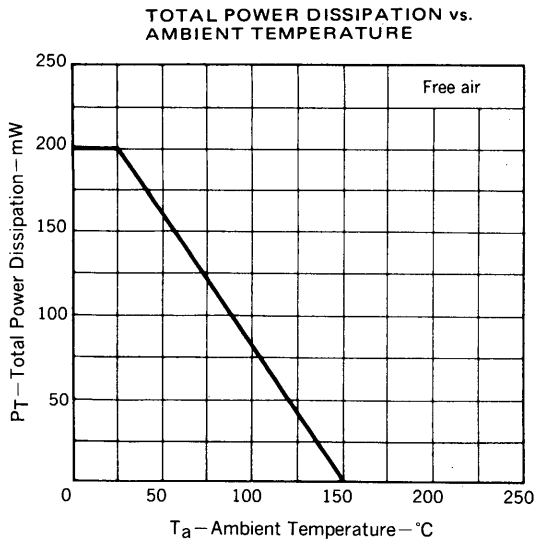
CHARACTERISTIC	SYMBOL	MIN.	TYP.	MAX.	UNIT	TEST CONDITIONS
Collector Cutoff Current	$I_{CBO}$			100	nA	$V_{CB} = 50\text{ V}, I_E = 0$
DC Current Gain	$h_{FE1}^*$	135	330	600		$V_{CE} = 5.0\text{ V}, I_C = 5.0\text{ mA}$
DC Current Gain	$h_{FE2}^*$	100	290			$V_{CE} = 5.0\text{ V}, I_C = 50\text{ mA}$
Collector Saturation Voltage	$V_{CE(sat)}^*$		0.04	0.2	V	$I_C = 5.0\text{ mA}, I_B = 0.25\text{ mA}$
Low-Level Input Voltage	$V_{IL}^*$		0.55	0.5	V	$V_{CE} = 5.0\text{ V}, I_C = 100\ \mu\text{A}$
High-Level Input Voltage	$V_{IH}^*$	3.0	1.05		V	$V_{CE} = 0.2\text{ V}, I_C = 5.0\text{ mA}$
Input Resistor	$R_1$	15.4	22	28.6	$k\Omega$	
Turn-on Time	$t_{on}$			0.2	$\mu\text{s}$	$V_{CC} = 5\text{ V}, V_{in} = 5\text{ V}$
Storage Time	$t_{stg}$			5.0	$\mu\text{s}$	$R_L = 1\text{ k}\Omega$
Turn-off Time	$t_{off}$			6.0	$\mu\text{s}$	$PW = 2\ \mu\text{s}, \text{Duty Cycle} \leq 2\%$

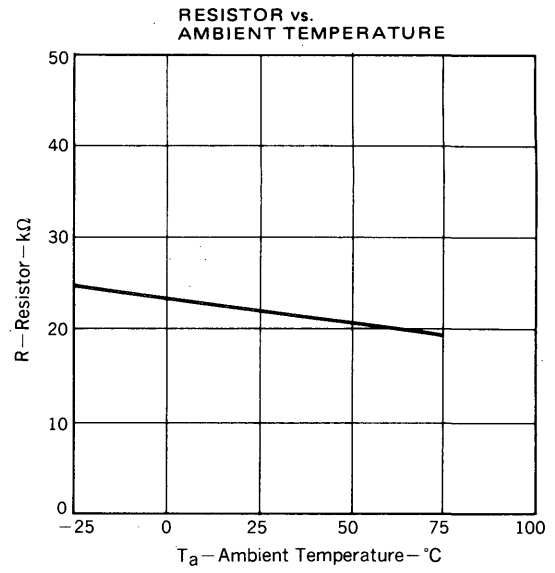
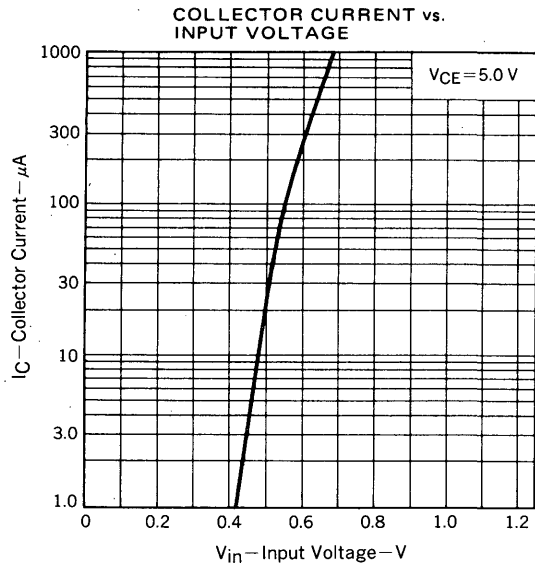
\* Pulsed:  $PW \leq 350\ \mu\text{s}, \text{Duty Cycle} \leq 2\%$

**$h_{FE}$  Classification**

Marking	L64	L65	L66
$h_{FE1}$	135 to 270	200 to 400	300 to 600

TYPICAL CHARACTERISTICS ( $T_a = 25^\circ\text{C}$ )









LittleDiode supplies new, hard to find or obsolete electronic components and semiconductors all over the world.

With over two million different components listed you are sure to find the part you need.

Feel free to visit us today at our online store:

[LittleDiode.com](http://LittleDiode.com)

Looking forward to providing you with the best possible service.