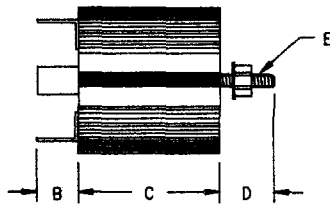
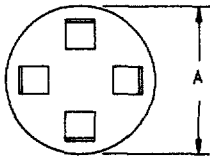


3 Amp Encapsulated Assemblies ER Series



Dimensions			
	Inches	Millimeters	Notes
A	1.31	33.3	
B	0.44	11.1	
C	1.06	26.9	
D	0.47	11.9	
E	---	---	1

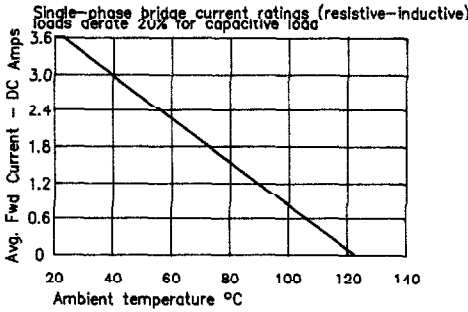
Note 1: 1/4"-20 Mounting Stud

Microsemi Catalog Number	Max. PRV Rating Per Circuit Arm
ER*1B1	100
ER*2B1	200
ER*3B1	300
ER*4B1	400
ER*5B1	500
ER*6B1	600
ER*7B1	700
ER*8B1	800
ER*9B1	900
ER*10B1	1000
ER*12B1	1200
ER*14B1	1400
ER*16B1	1600

*Add F21 for Faston Terminal with Series 21 Diode
*Add L21 for Flexible lead with Series 21 Diode (min length-4")

- Encapsulated in rounded case
- Single phase available
- Full Wave Bridge rating of 1600 PRV
- Completely sealed, compact, corrosion and moisture resistant
- Available in a variety of circuit configurations

Electrical Characteristics	
Circuit:	Single phase full wave bridge
AC Input:	Up to 1600 PRV
DC Output:	Up to 3 Amps DC (40°C Amb.)
Surge Current	
Rating:	250 Amps peak for one cycle (25°C Amb.)
Loads:	Resistive, Inductive, Capacitive, Continuous
Duty Cycle:	Continuous
Cooling:	Convection
Design Features:	Diodes housed in an epoxy sealed case. Faston terminals or flexible leads.



PH: 303-469-2161
FAX: 303-466-3775

Microsemi Corp.
Colorado



LittleDiode supplies new, hard to find or obsolete electronic components and semiconductors all over the world.

With over two million different components listed you are sure to find the part you need.

Feel free to visit us today at our online store:

LittleDiode.com

Looking forward to providing you with the best possible service.