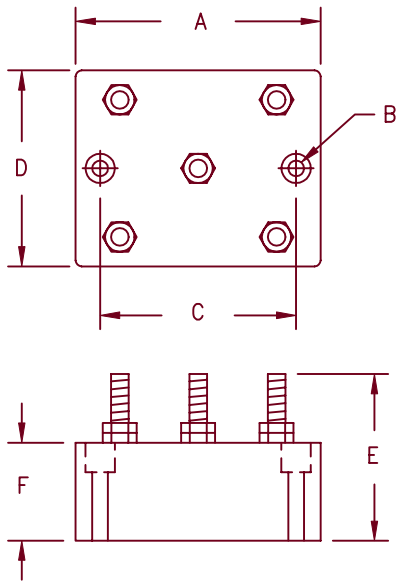


Encapsulated Assemblies EH Series



Dimensions			
	Inches	Millimeters	Notes
A	2.25	57.2	
B	---	---	1
C	1.75	44.5	
D	1.75	44.5	
E	1.313	33.35	
F	.875	22.23	

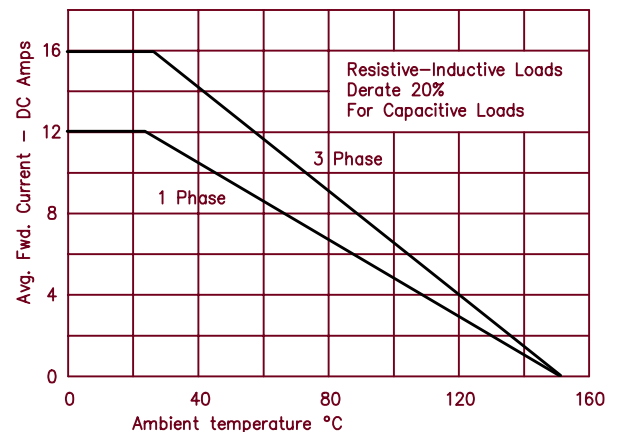
Note 1: Mounting hole .172 (4.37 mm) Dia.

Microsemi Catalog Number	Max. PRV Rating	
	Single Phase	Three Phase
EH*2B1	EH*2Z1	200V
EH*4B1	EH*4Z1	400V
EH*6B1	EH*6Z1	600V
EH*8B1	EH*8Z1	800V
EH*10B1	EH*10Z1	1000V
EH*12B1	EH*12Z1	1200V
EH*14B1	EH*14Z1	1400V
EH*16B1	EH*16Z1	1600V

*Add S for Stud Terminal or F for Faston Terminal

- High current encapsulated assembly
- Single and three phase bridges available
- Full Wave Bridge rating of 1600V PRV
- Completely sealed, compact, corrosion and moisture resistant

Electrical Characteristics	
Circuit:	Single phase and three phase full wave bridge
AC Input:	Up to 1600 PRV
DC Output:	1 Phase Up to 12 Amps DC (25°C Amb.-Chassis mounted) 3 Phase Up to 16 Amps DC (25°C Amb.-Chassis mounted)
Surge Current	250 Amps peak for one cycle
Loads:	Resistive, Inductive, Capacitive, Continuous
Duty Cycle:	Continuous
Cooling:	Convection
Design Features:	The diodes are housed in an epoxy sealed case Convenient faston or stud terminals as specified.
Mounting Torque:	30 inch pounds maximum—base and terminal



2-15-02 Rev. 2



LittleDiode supplies new, hard to find or obsolete electronic components and semiconductors all over the world.

With over two million different components listed you are sure to find the part you need.

Feel free to visit us today at our online store:

LittleDiode.com

Looking forward to providing you with the best possible service.